

Bylaw 16428

A Bylaw to amend Bylaw 15100, as amended,
The Municipal Development Plan: The Way We Grow
Amendment No. 2

WHEREAS pursuant to the authority granted to it by the Municipal Government Act, on May 26, 2010 the Municipal Council of the City of Edmonton passed Bylaw 15100, The Municipal Development Plan: The Way We Grow; and

WHEREAS an application was received by Sustainable Development to amend The Municipal Development Plan: The Way We Grow;

WHEREAS Council considers it desirable to amend The Municipal Development Plan: The Way We Grow

NOW THEREFORE after due compliance with the relevant provisions of the Municipal Government Act RSA 2000, ch. M-26, as amended, the Municipal Council of the City of Edmonton duly assembled enacts as follows:

1. That Bylaw 15100, as amended, The Municipal Development Plan: The Way We Grow is hereby amended by:
 - a. deleting the map entitled “Map 1 - Land Development Concept” and substituting therefore with map entitled “Map 1 - Land Development Concept”, annexed hereto as Schedule “A” and forming part of this Bylaw.

- b. deleting the map entitled “Map 4 - Development and Planned Neighbourhoods”, and substituting therefore with map entitled “Map 4 - Development and Planned Neighbourhoods” annexed hereto as Schedule “B” and forming part of this Bylaw.

| | | |
|-------------------------|--------|---------------|
| READ a first time this | day of | , A. D. 2013; |
| READ a second time this | day of | , A. D. 2013; |
| READ a third time this | day of | , A. D. 2013; |
| SIGNED and PASSED this | day of | , A. D. 2013. |

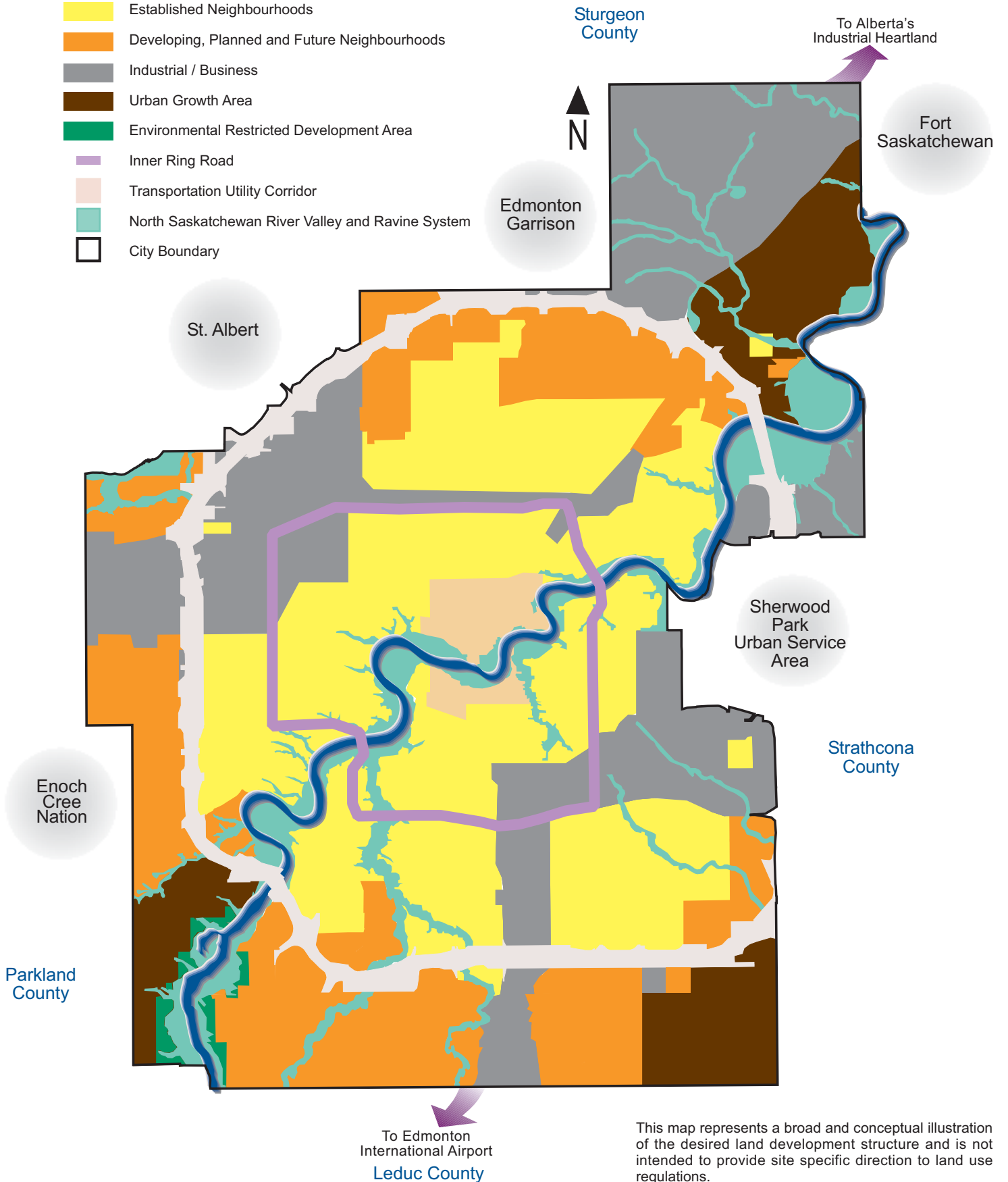
THE CITY OF EDMONTON

MAYOR

CITY CLERK

Map 1: Land Development Concept

- Central Core
- Established Neighbourhoods
- Developing, Planned and Future Neighbourhoods
- Industrial / Business
- Urban Growth Area
- Environmental Restricted Development Area
- Inner Ring Road
- Transportation Utility Corridor
- North Saskatchewan River Valley and Ravine System
- City Boundary



This map represents a broad and conceptual illustration of the desired land development structure and is not intended to provide site specific direction to land use regulations.

Map 4: Developing and Planned Residential Neighbourhoods

- Developing Neighbourhoods (NSP approved)
 - Planned Neighbourhoods (ASP or SCDB approved, No NSP & No Development)
 - Plan Under Preparation (No ASP, SCDB or NASP)
 - Main Arterial Roads
 - Transportation Utility Corridor
 - North Saskatchewan River Valley and Ravine System
 - City Boundary
- ASP = Area Structure Plan
 SCDB = Servicing Concept Design Brief
 NSP = Neighbourhood Structure Plan
 NASP = Neighbourhood Area Structure Plan

