

# Reducing Speed Limits

## Increasing Safety and Livability in Edmonton

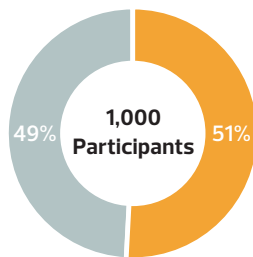
A summary of integrated public engagement activities and results undertaken by the City since 2018 that captured citizen input into traffic safety initiatives and provided insights into community priorities for renewal projects. Improving safety, mobility and accessibility are recurring themes that have emerged from these various forms of public engagement.



### Traffic Safety Culture Survey 2018

1,000 Participants

The data collected in biennial Traffic Safety Culture surveys provides insights into how road users perceive themselves and their actions, the actions of others and the rules of the road. The results of this latest Traffic Safety Culture Survey indicate that while the overall traffic safety culture is positive, there are still opportunities to improve road user behaviours, as well as the perceived acceptability of certain behaviours on our roadways.

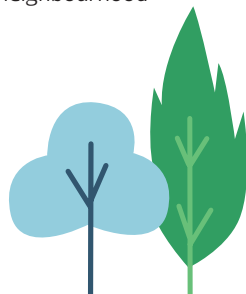


51% agreed that traffic safety is a concern in their neighbourhood

### What We Heard Vision 2050 April 2018

Overall feedback on urban shift:

- Most felt that Edmonton needs to become more interconnected, from an infrastructure, transit and people perspective, so it should densify.
- How people get around is a critical aspect of being an interconnected city, and so many brought up transportation in the context of urban shift.
- Having a transit system that is efficient and effective is important. Others focused on bike lanes and walkability as key contributors to a connected city.
- People spoke about the modes of transportation they rely on and how they were impacted by service levels and infrastructure.



VISION ZERO

Edmonton

## Building Great Neighbourhoods 2018–2019 Public Engagement

Alberta Avenue  
Strathcona  
Royal Gardens  
Central McDougall  
Inglewood  
Highlands  
Grandview Heights  
Lorelei

Beaumaris  
Eastwood  
Elmwood Park  
Malmo Plains  
Garneau  
Calder  
Killarney  
Pleasantview

6,300  
Participants

Engaged approximately 6,300 residents regarding Neighbourhood Renewal reconstruction projects.

These key themes were heard across mature, residential neighbourhoods located both within and outside of the Core Zone:

- **Safety:** roadways and intersections should be user-friendly and reduce vehicle speeds and discourage shortcutting. The neighbourhood should feel safe and inclusive.
- **Pedestrian friendly and walkable:** pedestrian focused, with inviting public spaces and parks that strengthen the sense of community. People should feel comfortable walking and crossing roads.
- **Accessibility:** infrastructure, street crossings, and public spaces are accessible and safe for all ages, genders, and mobility levels, and in all seasons.

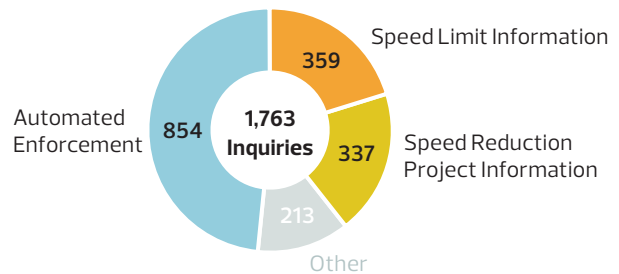
## Intercept Survey 2017–2018

675+  
Participants

Support for reduced speed limits increases with information on chances for pedestrian survival in a collision with a vehicle travelling at 30 km/h or 40 km/h.

## 311 Inquiries

In 2019, 311 received 1,763 inquiries regarding traffic safety initiatives and activities, the top three topics were:



In 2018, 1,100 inquiries were received and speeding complaints in residential areas have increased by over 180 percent since 2012.

For more information, visit [edmonton.ca/safespeeds](http://edmonton.ca/safespeeds).

