

Bylaw 19317

Closure of Vehicular Access to Titled Parcels for Valley Line West

---

WHEREAS the Municipal Council of the City of Edmonton may pass a Bylaw pursuant to Section 28 of the *Highways Development and Protection Act*, S.A. 2004, c. H-8.5 for the purpose of removing any access to a controlled street; and

WHEREAS City Council has considered the proposed closing and has agreed that it is in the public interest to pass this Bylaw;

NOW THEREFORE the Municipal Council of the City of Edmonton, duly assembled, enacts as follows:

1. All means of access to or from a controlled street generally as illustrated on the attached Schedules "A1" to "A28", are hereby closed.
  
2. This bylaw comes into force on April 1, 2021.

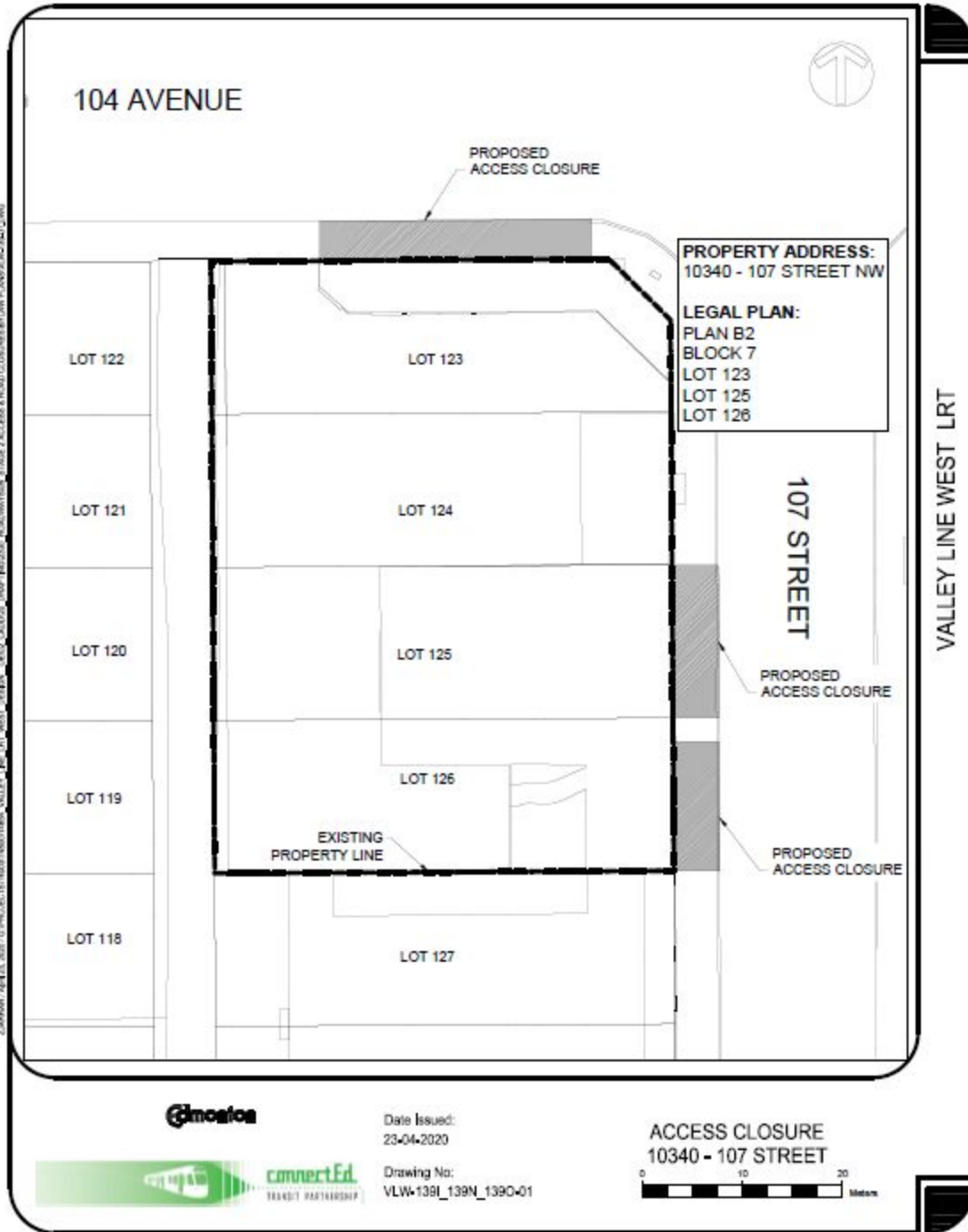
READ a first time this	_____	day of _____	_____	,A.D. 2020;
READ a second time this	_____	day of _____	_____	,A.D. 2020;
READ a third time this	_____	day of _____	_____	,A.D. 2020;
SIGNED and PASSED this	_____	day of _____	_____	,A.D. 2020.

THE CITY OF EDMONTON

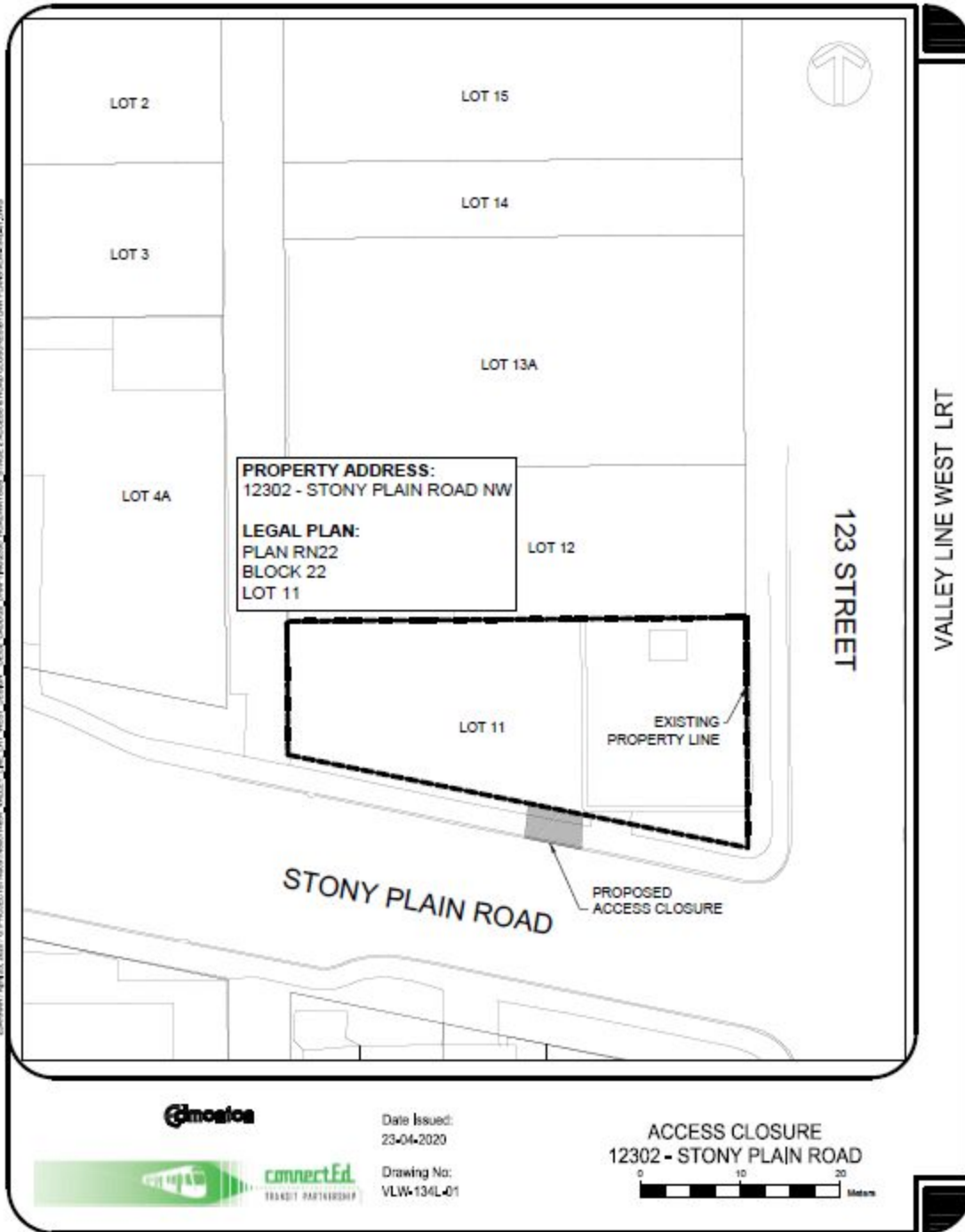
\_\_\_\_\_  
MAYOR

\_\_\_\_\_  
CITY CLERK

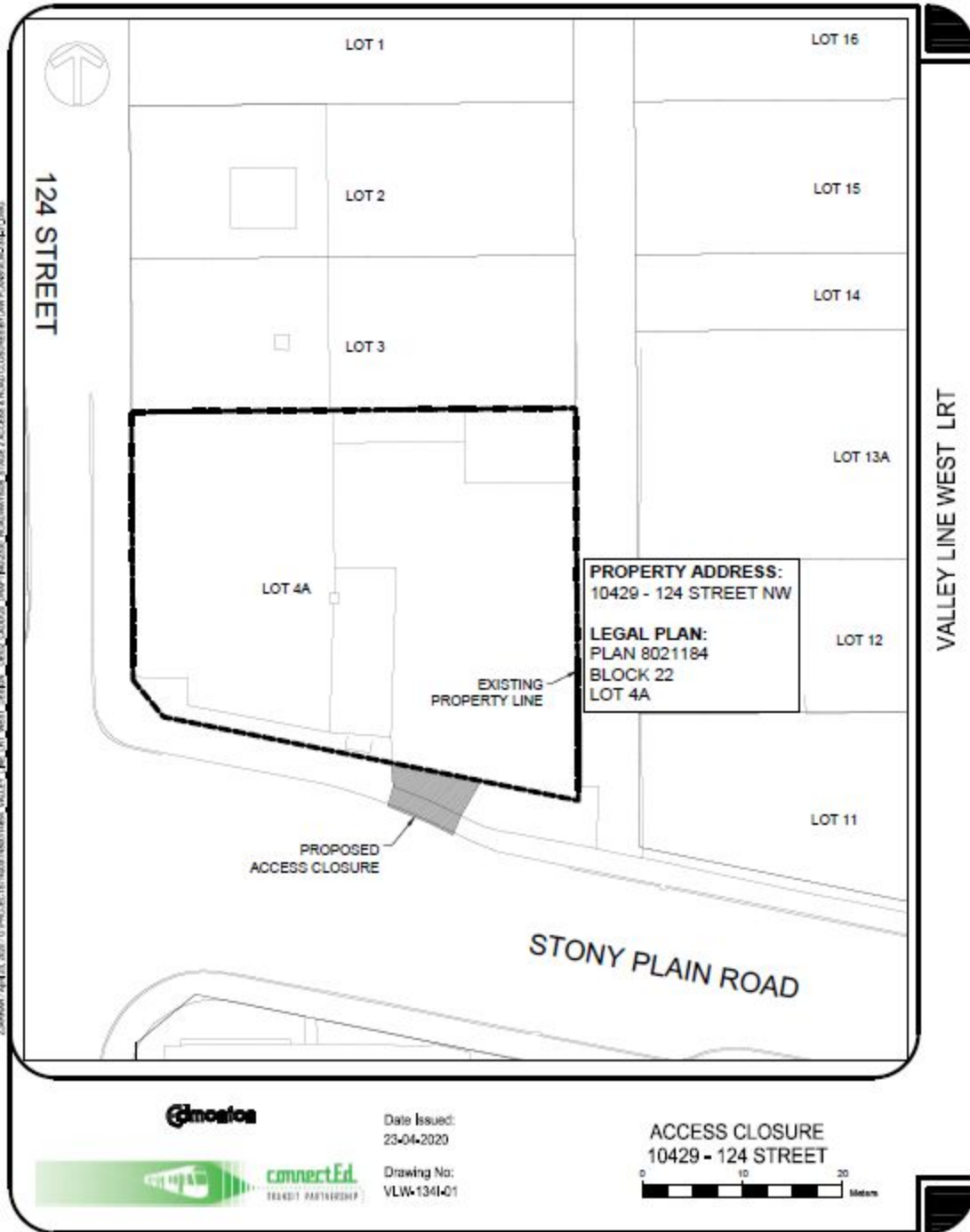
SCHEDULE "A1" TO BYLAW 19317



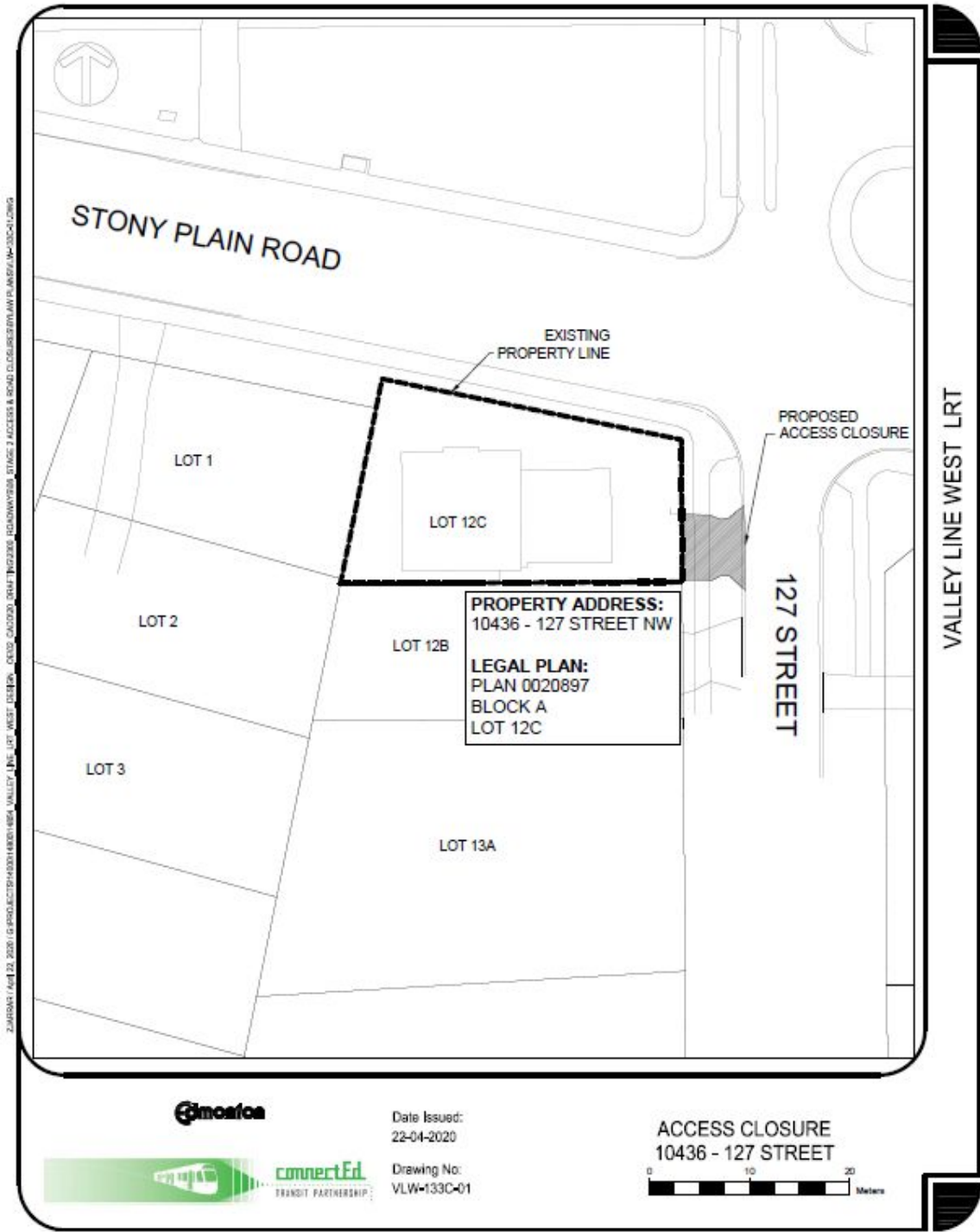
SCHEDULE "A2" TO BYLAW 19317



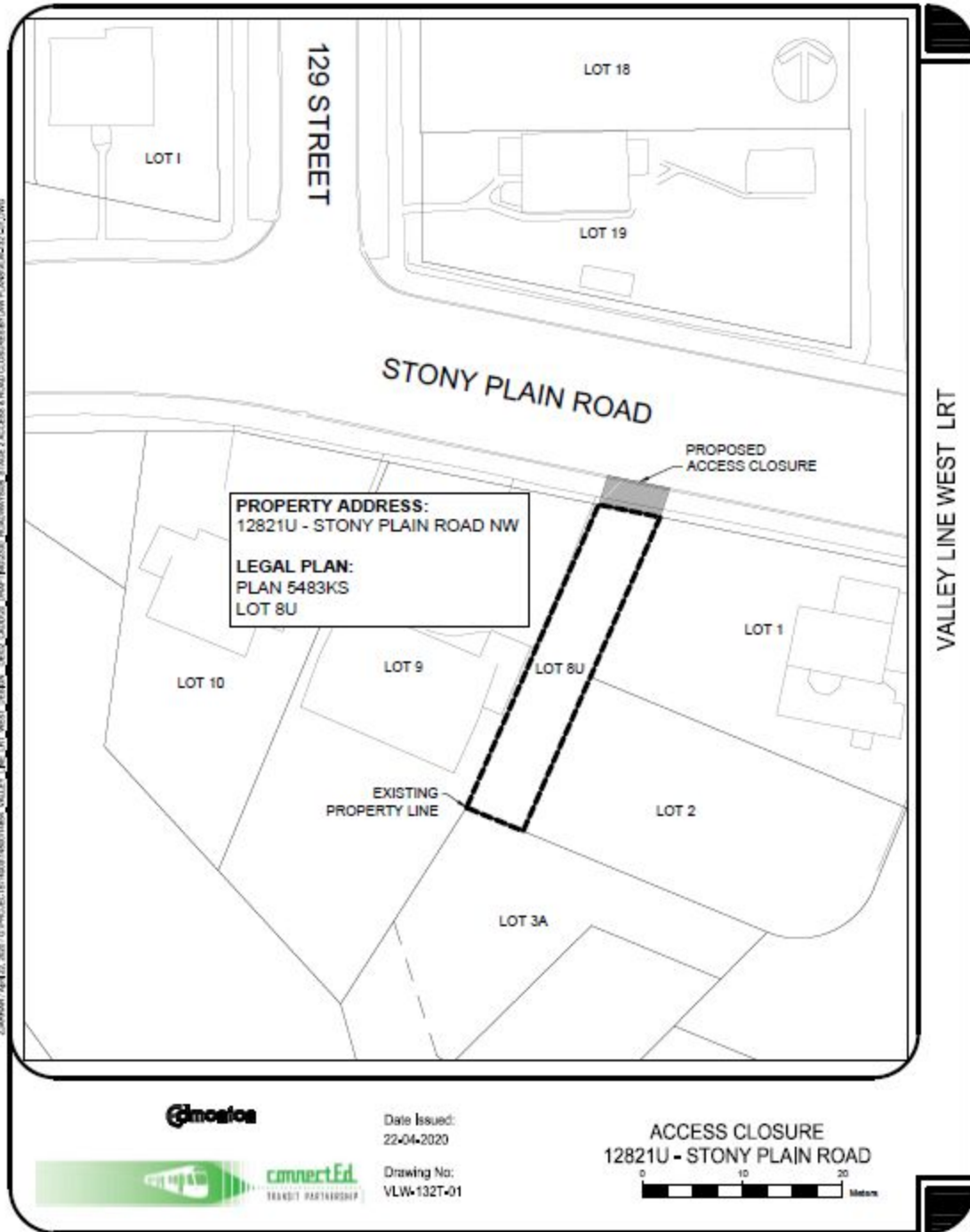
SCHEDULE "A3" TO BYLAW 19317



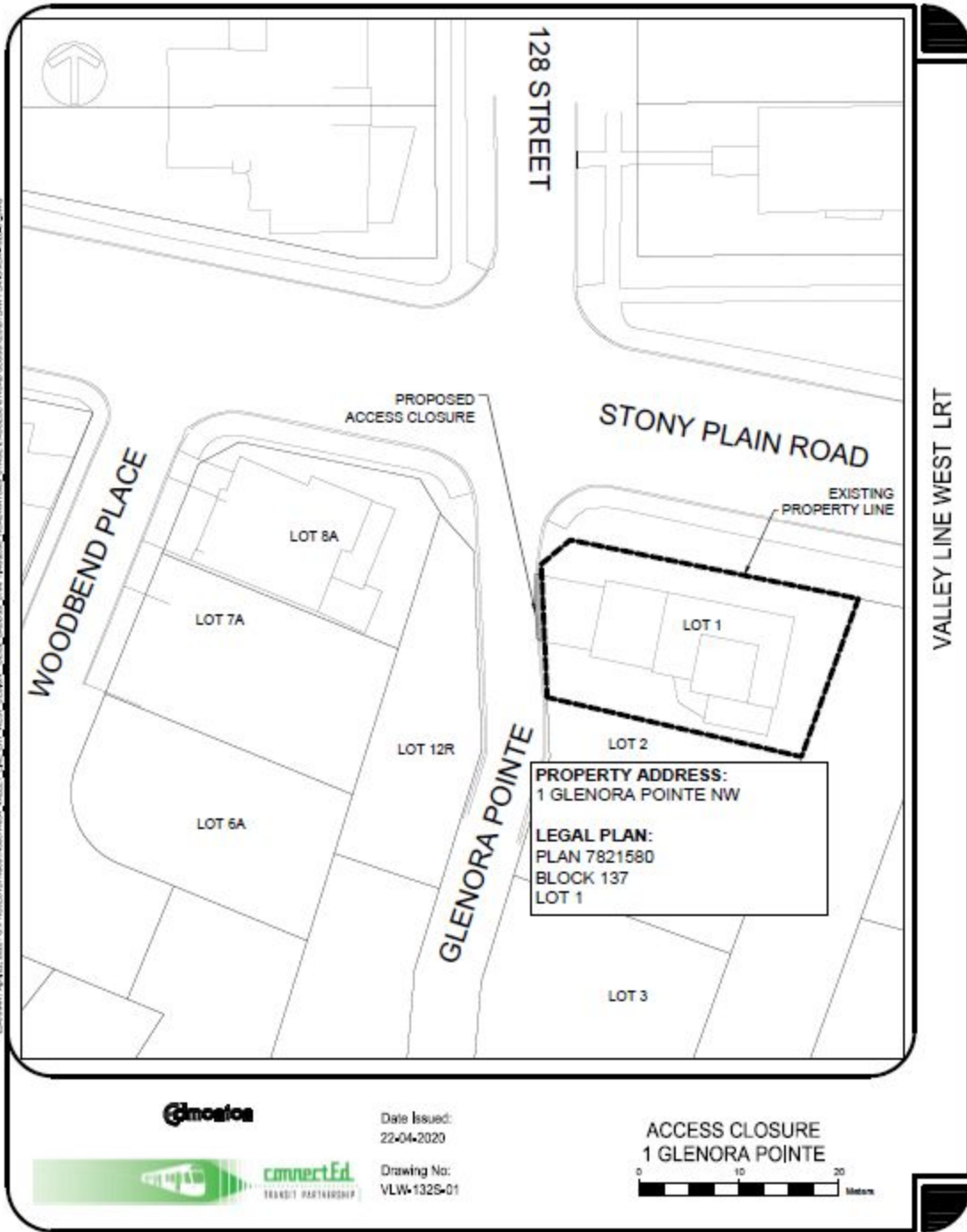
SCHEDULE "A4" TO BYLAW 19317



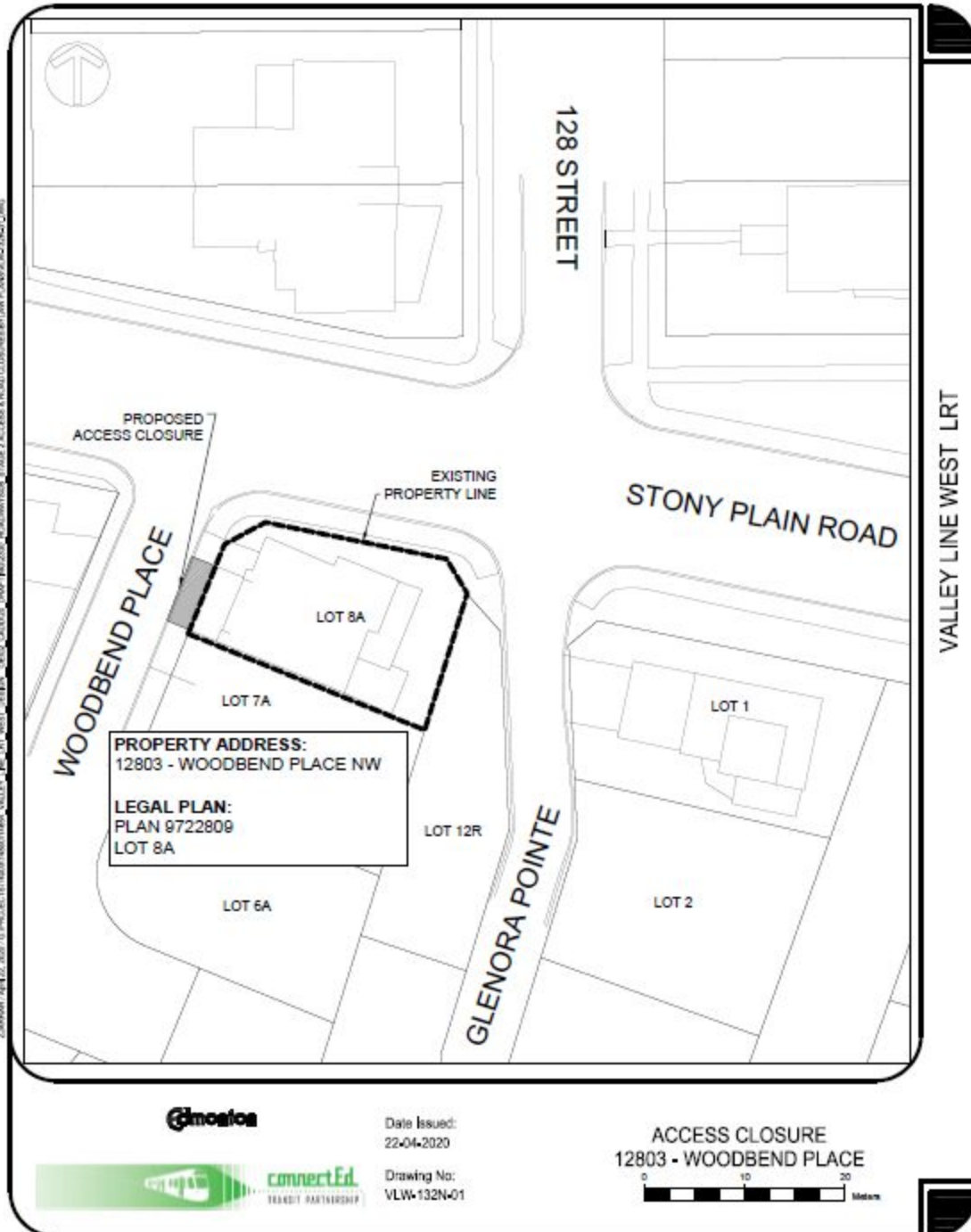
SCHEDULE "A5" TO BYLAW 19317



SCHEDULE "A6" TO BYLAW 19317



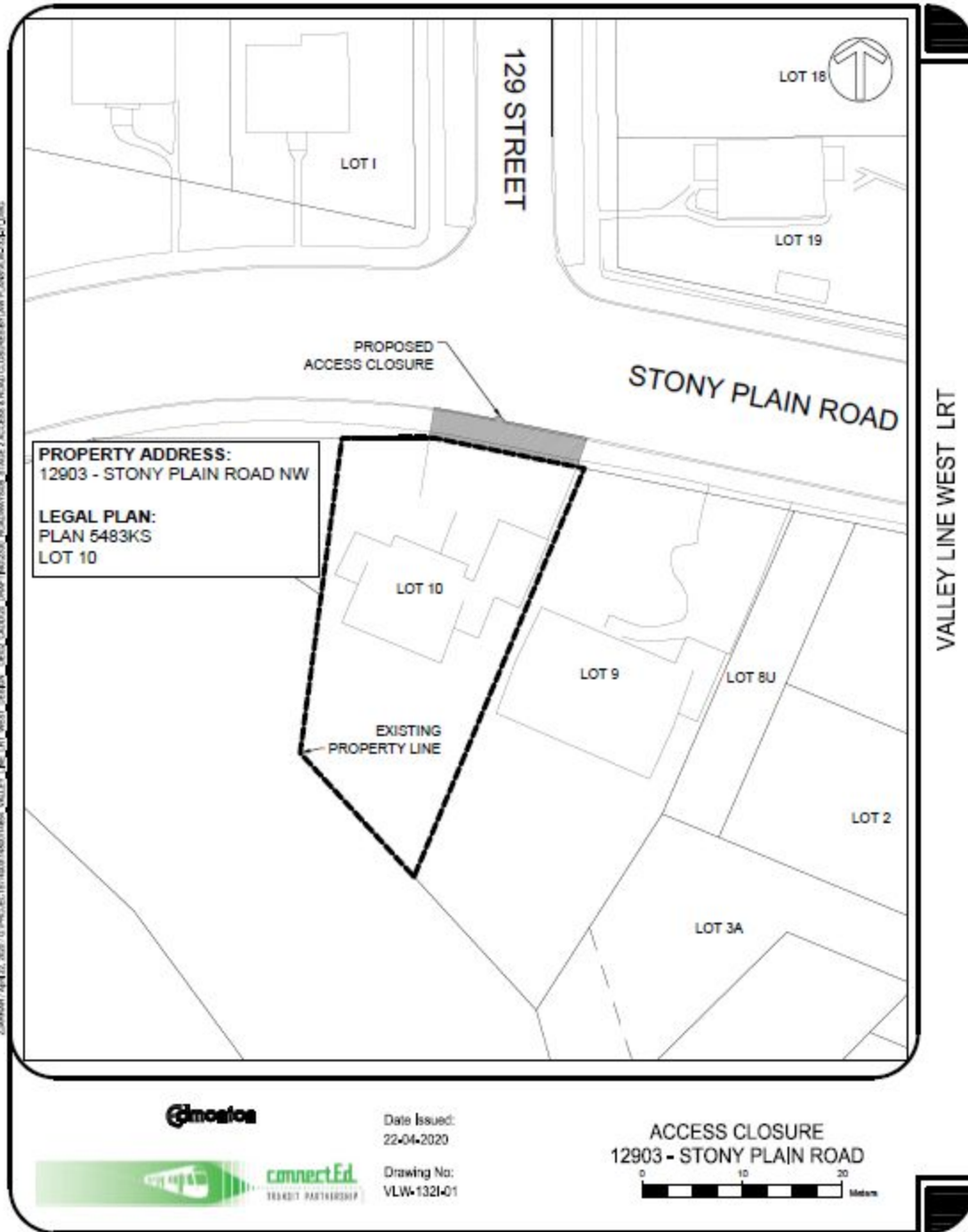
SCHEDULE "A7" TO BYLAW 19317





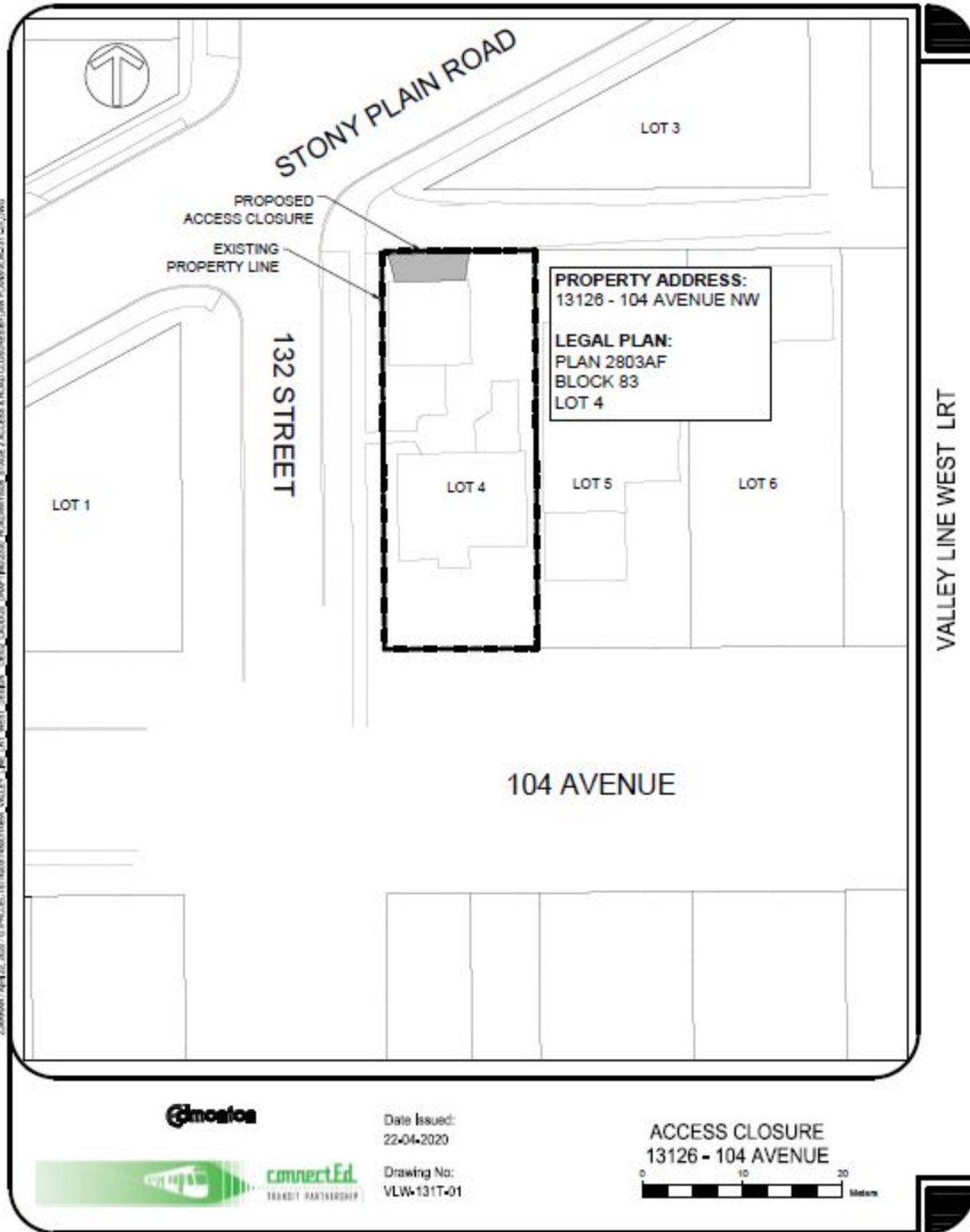


SCHEDULE "A9" TO BYLAW 19317

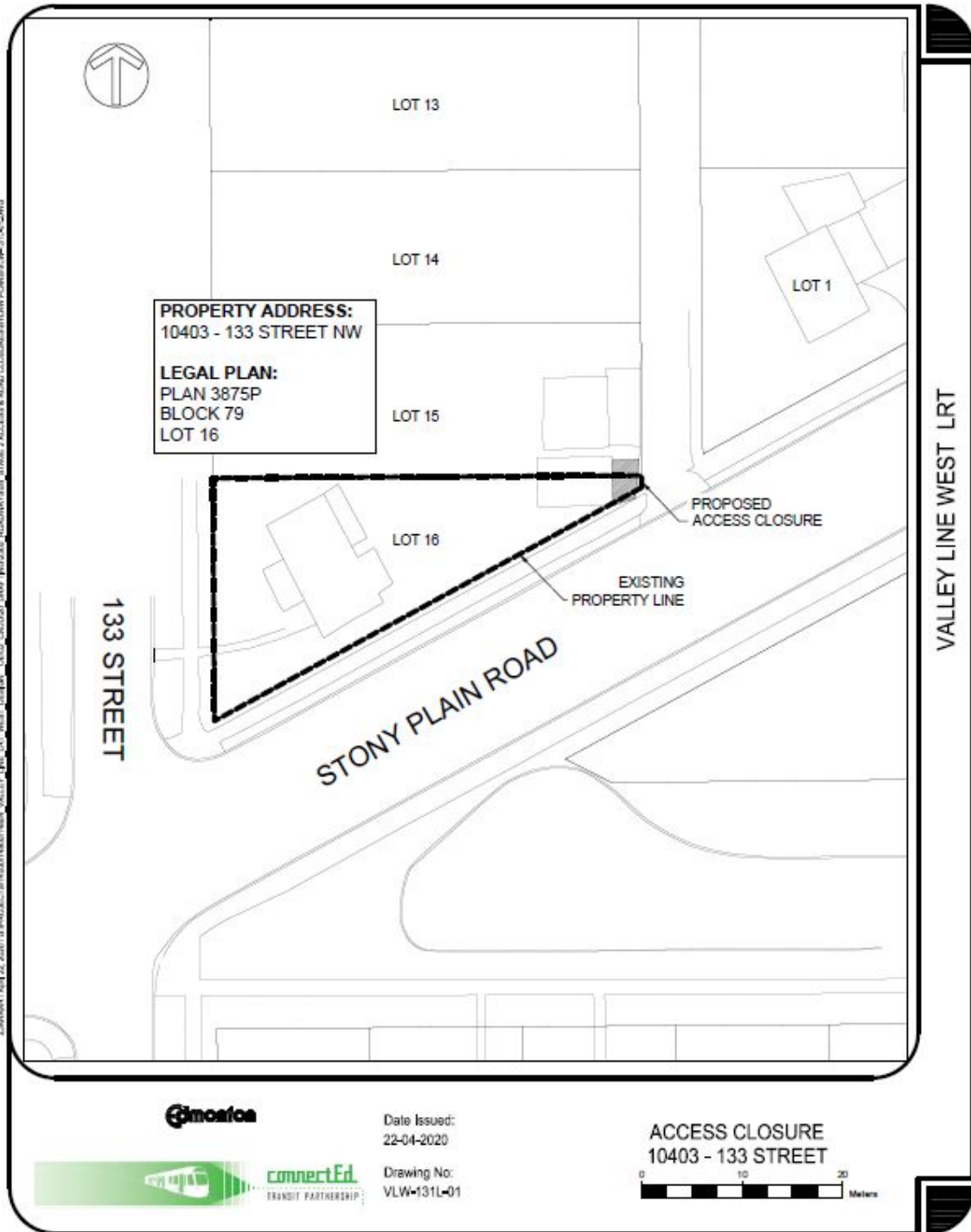




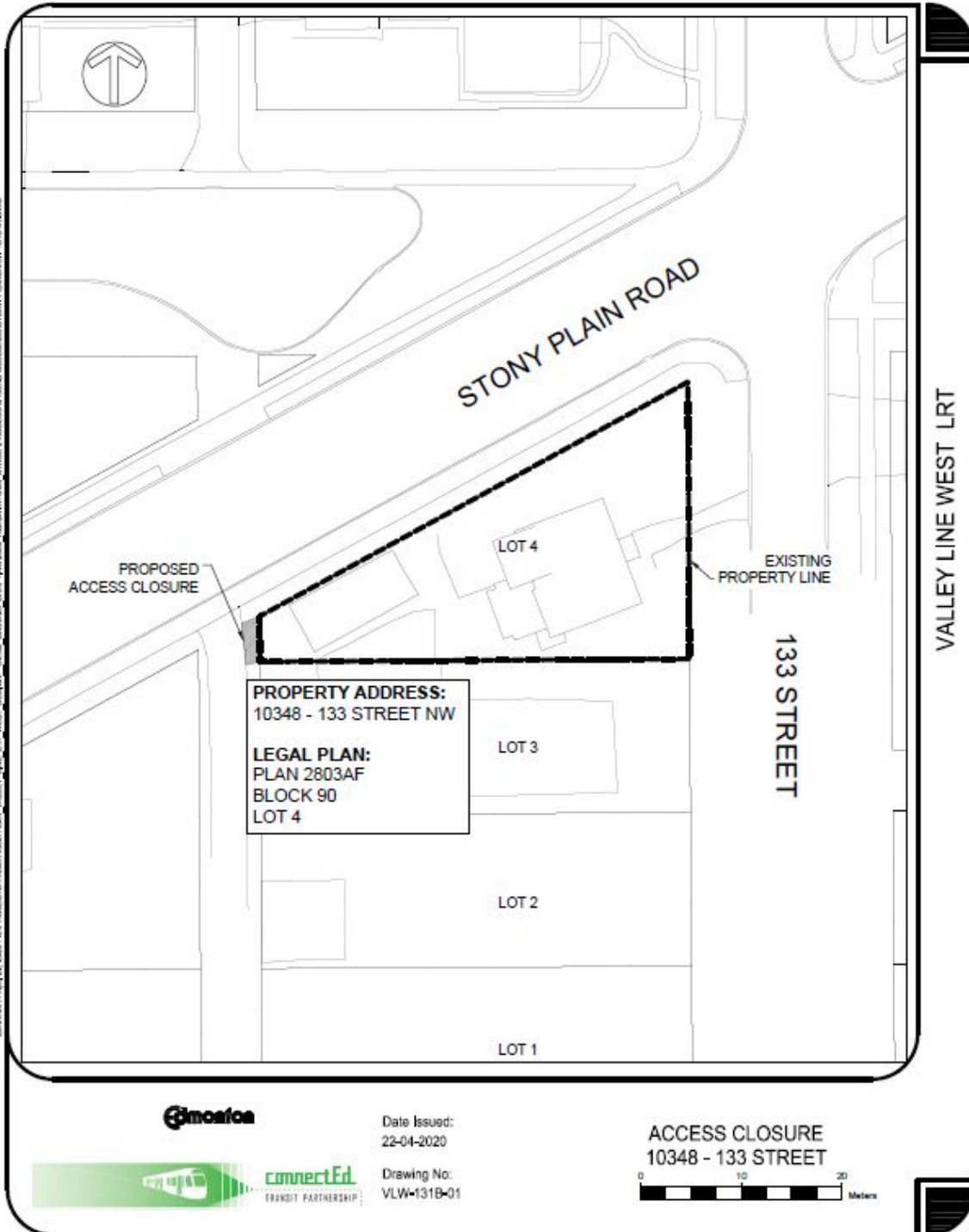
SCHEDULE "A11" TO BYLAW 19317



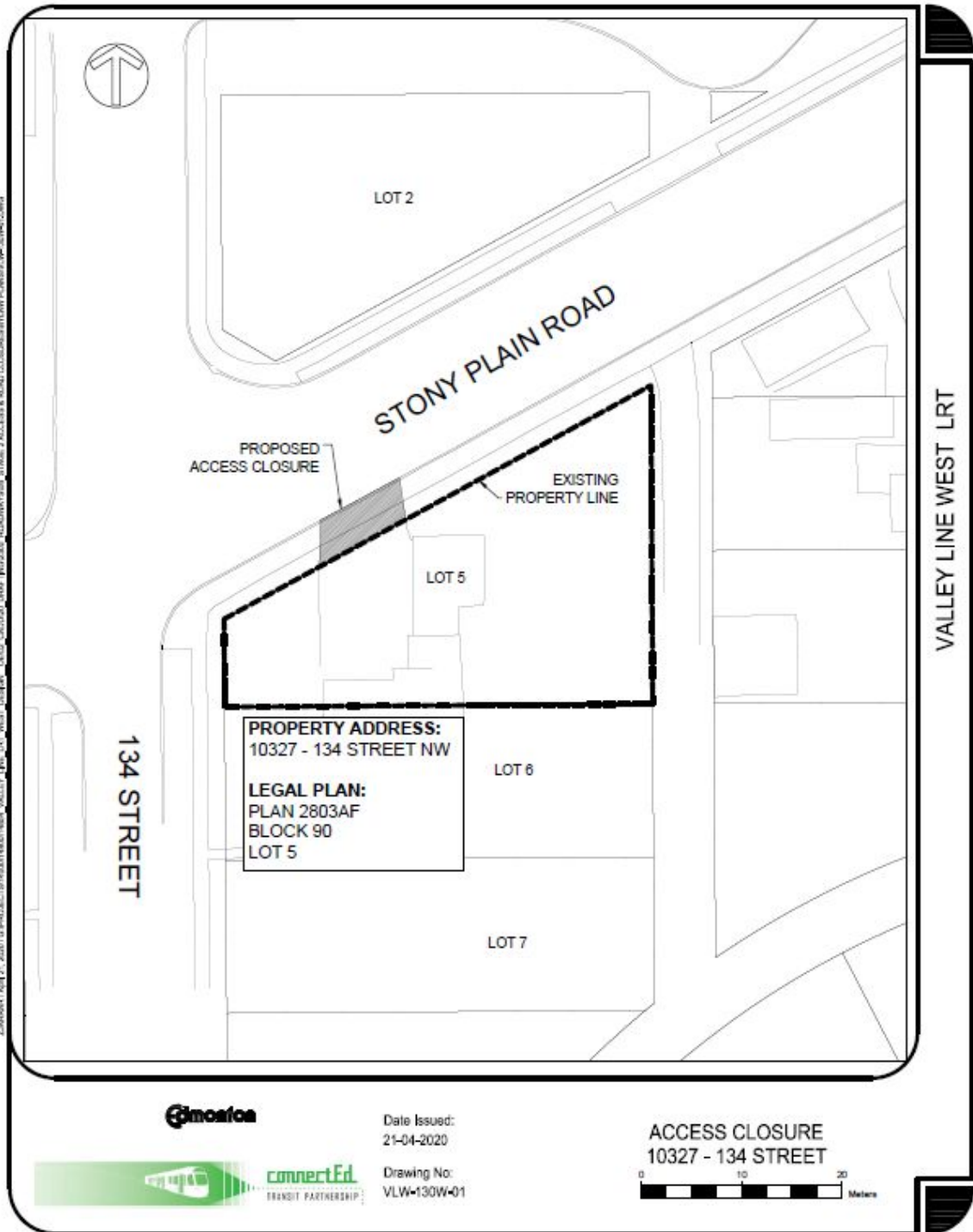
SCHEDULE "A12" TO BYLAW 19317



SCHEDULE "A13" TO BYLAW 19317



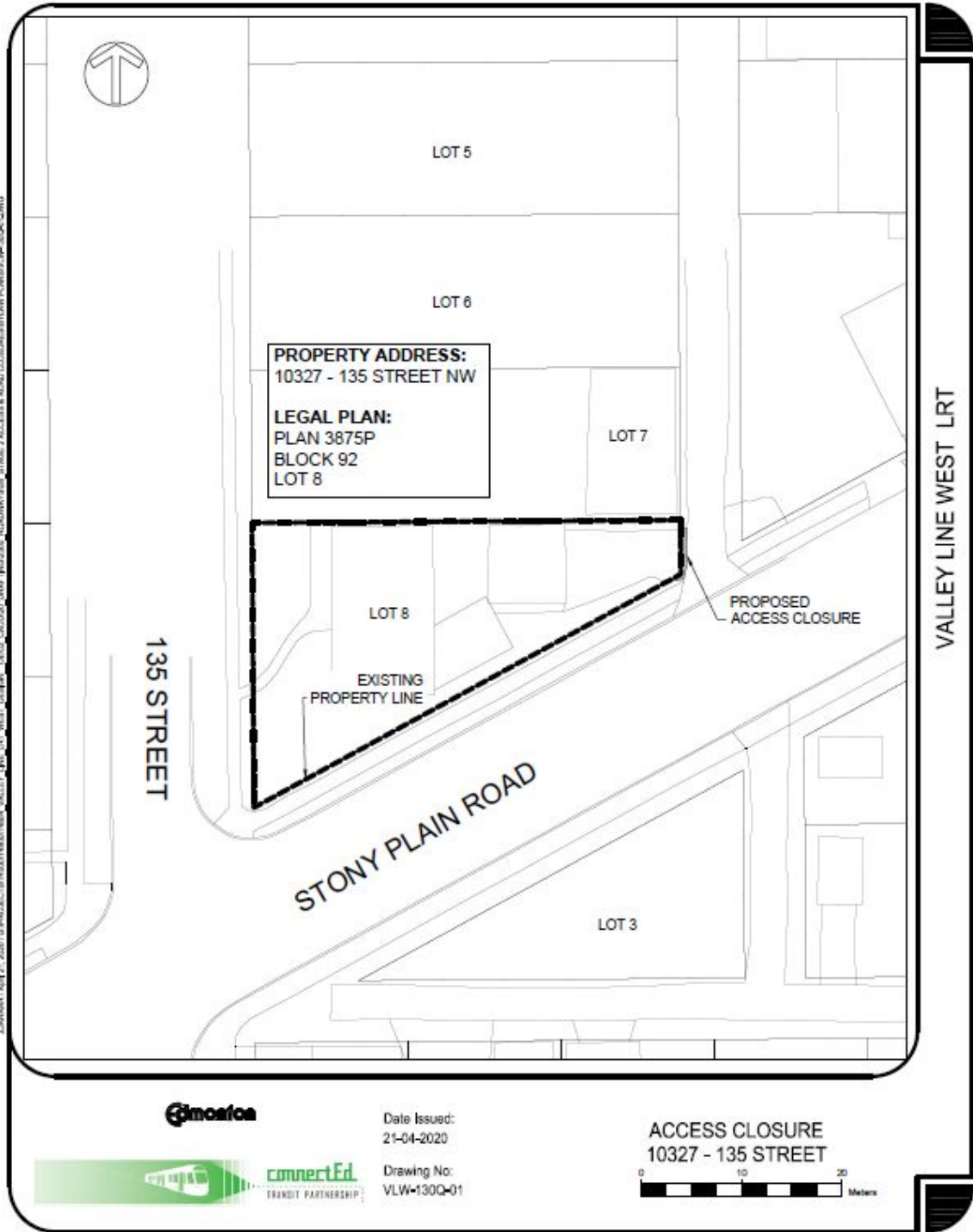
SCHEDULE "A14" TO BYLAW 19317



Z:\2020\16 PROPOSED VALLEY LINE WEST LRT STATION ACCESS & ROAD CLOSURES\1603130W-01 134 STREET ACCESS CLOSURE PLAN 2803AF\1603130W-01.dwg

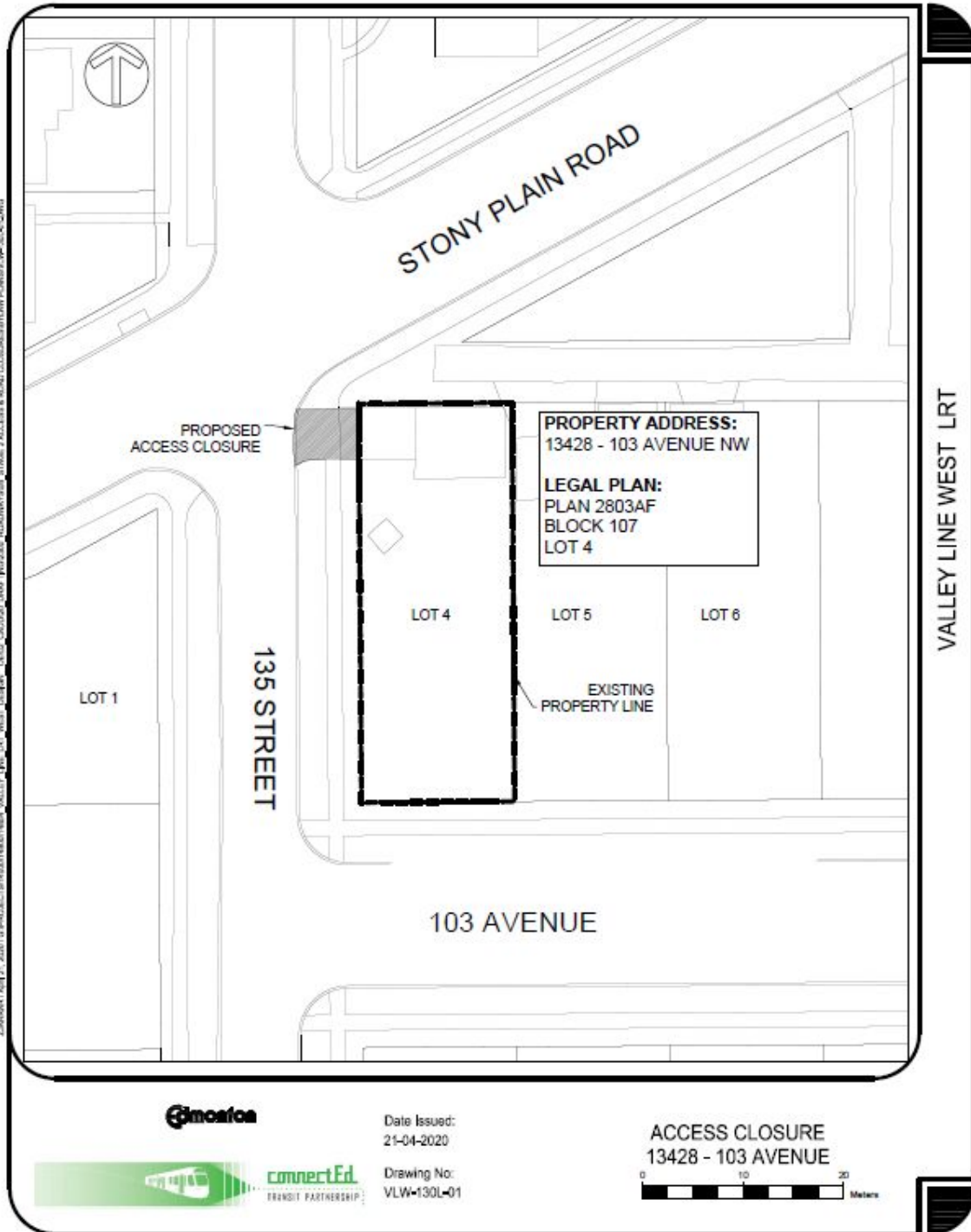


SCHEDULE "A15" TO BYLAW 19317



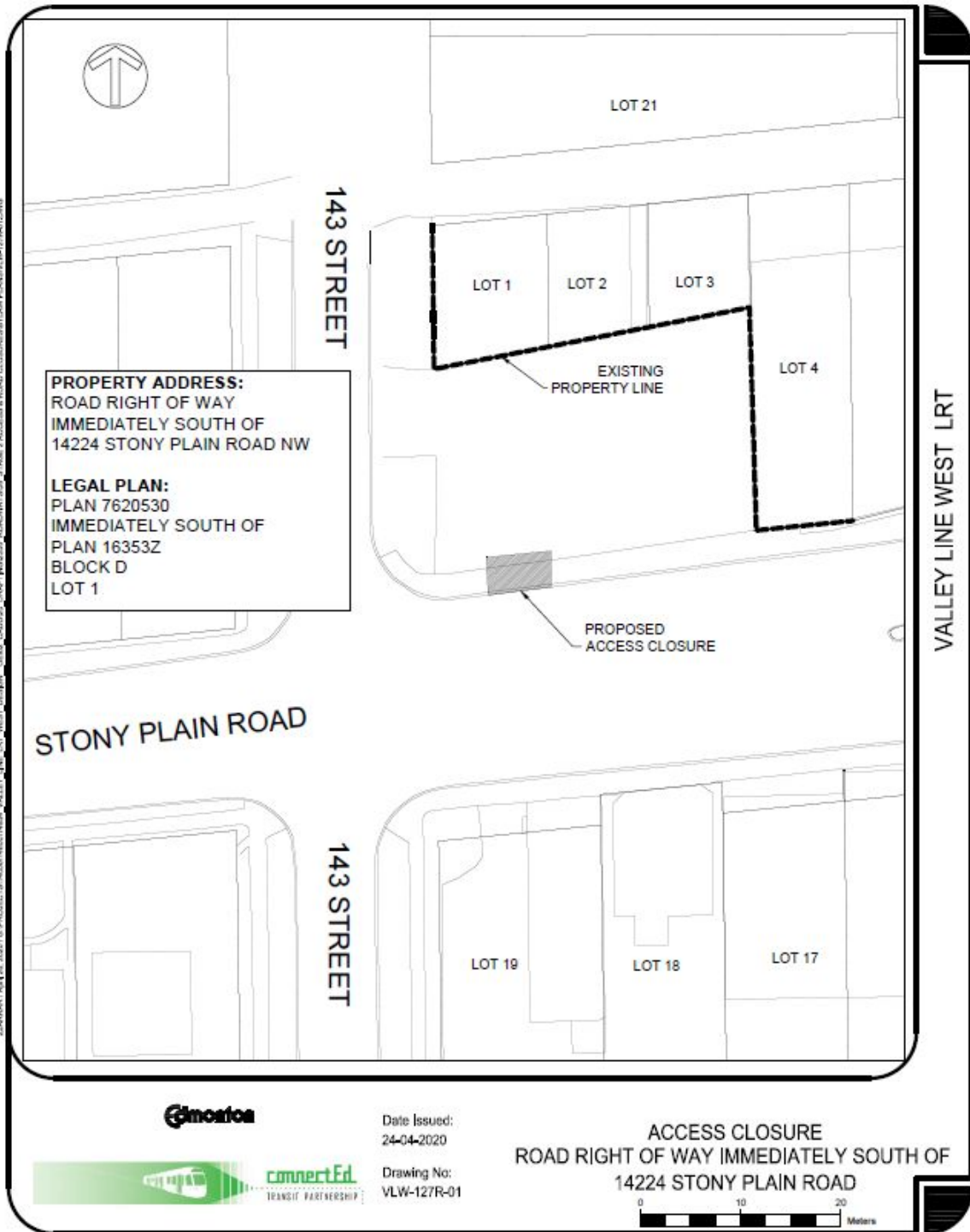


SCHEDULE "A16" TO BYLAW 19317





SCHEDULE "A18" TO BYLAW 19317

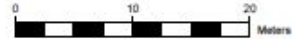


Z:\ARRR\1 April 2020\G:\PROJECTS\VALLEY LINE WEST DESIGN - DESIGN CHANGES\ROADWAY\308 - STAGE 2 ACCESS & ROAD CLOSURES\DWG PLAN\VALW-127R-01.DWG

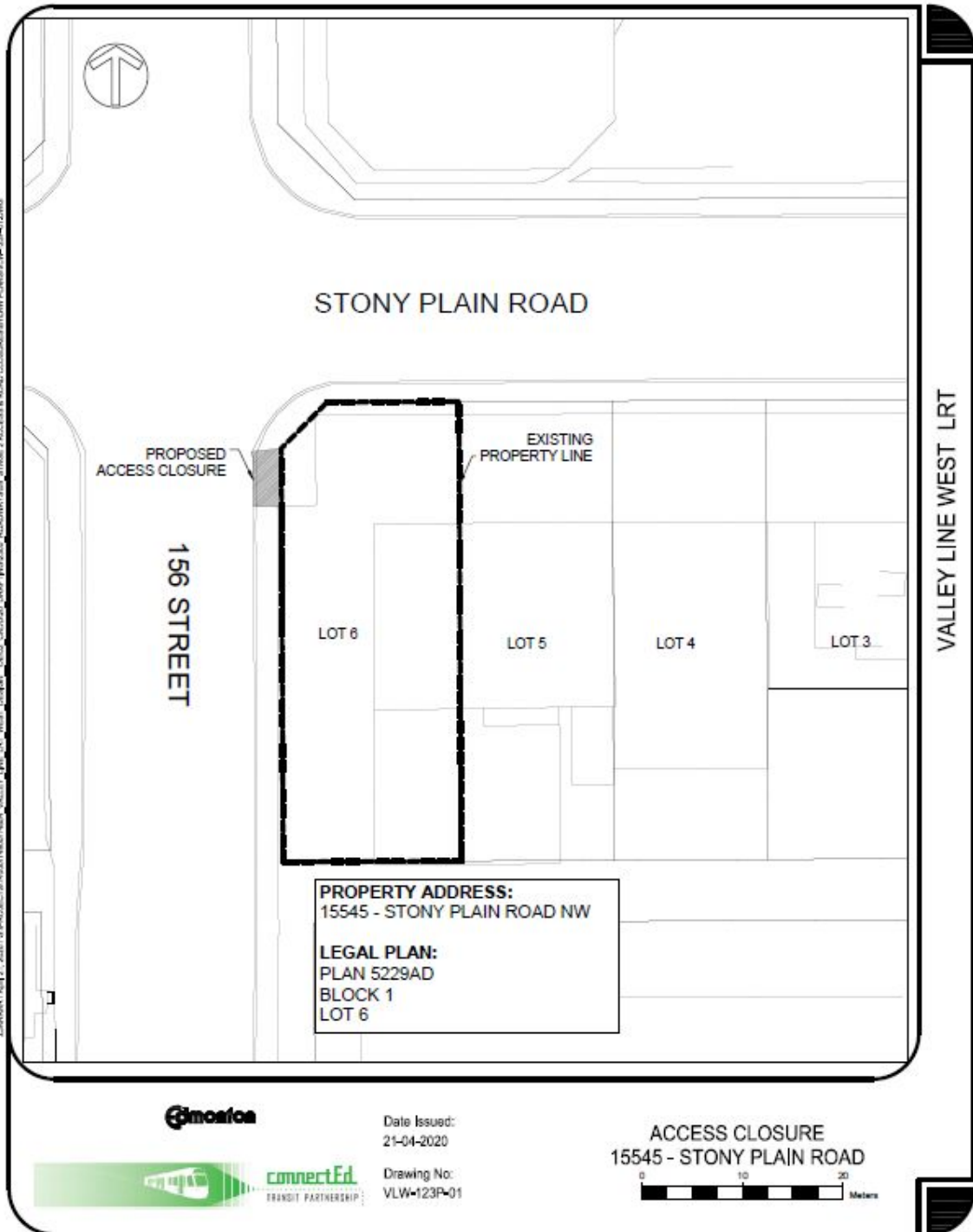


Date Issued:  
24-04-2020  
Drawing No:  
VLW-127R-01

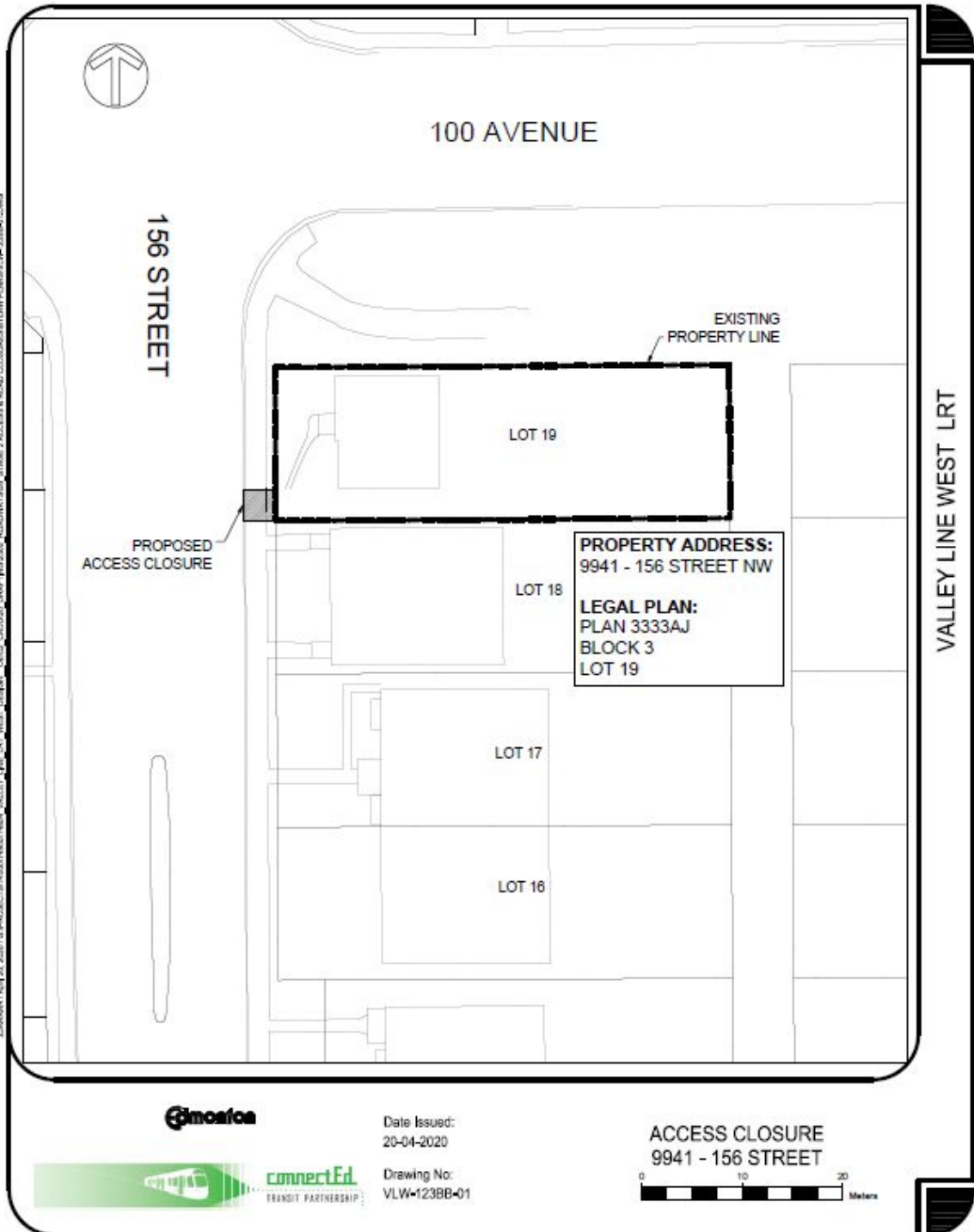
**ACCESS CLOSURE**  
ROAD RIGHT OF WAY IMMEDIATELY SOUTH OF  
14224 STONY PLAIN ROAD



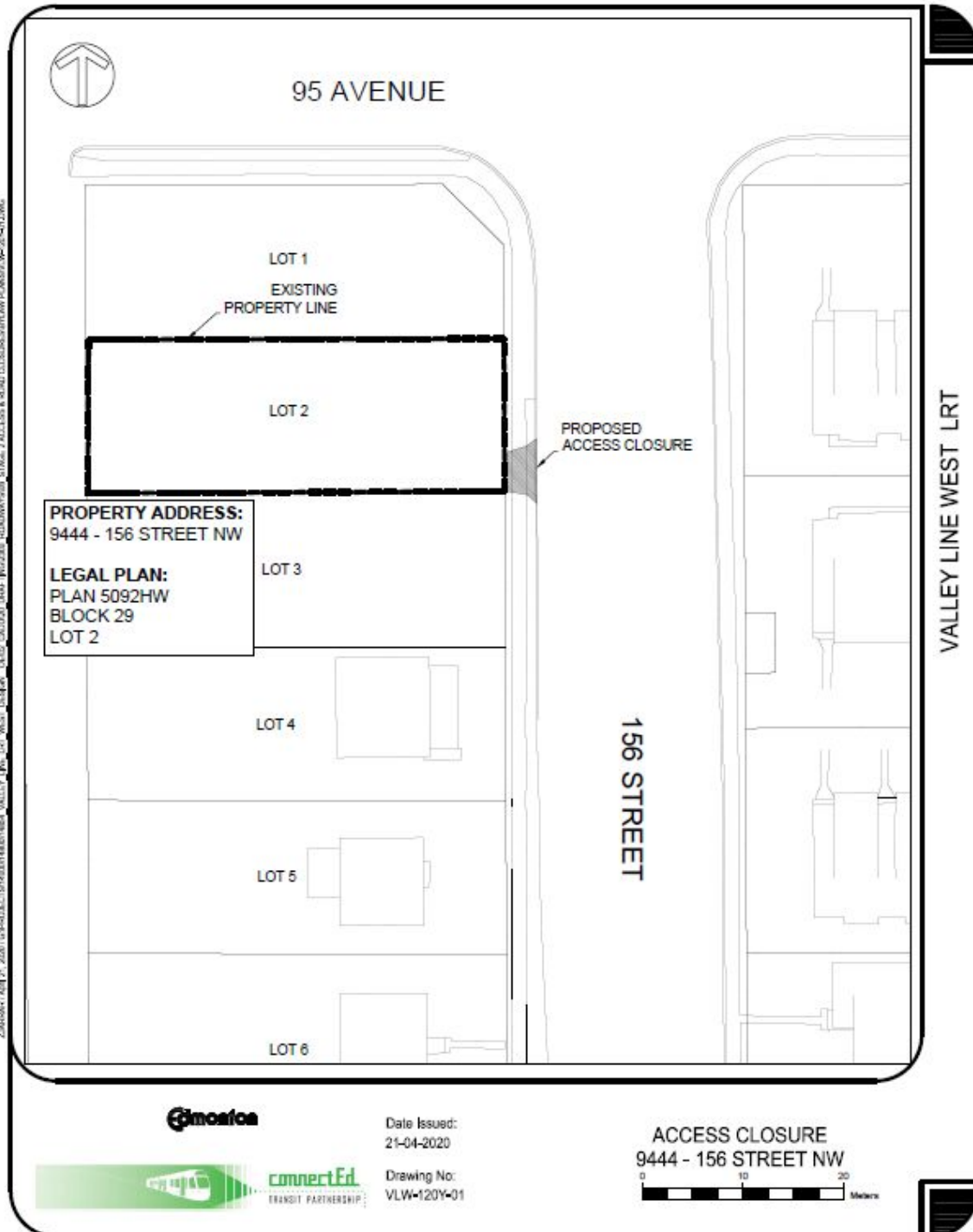
SCHEDULE "A19" TO BYLAW 19317



SCHEDULE "A20" TO BYLAW 19317

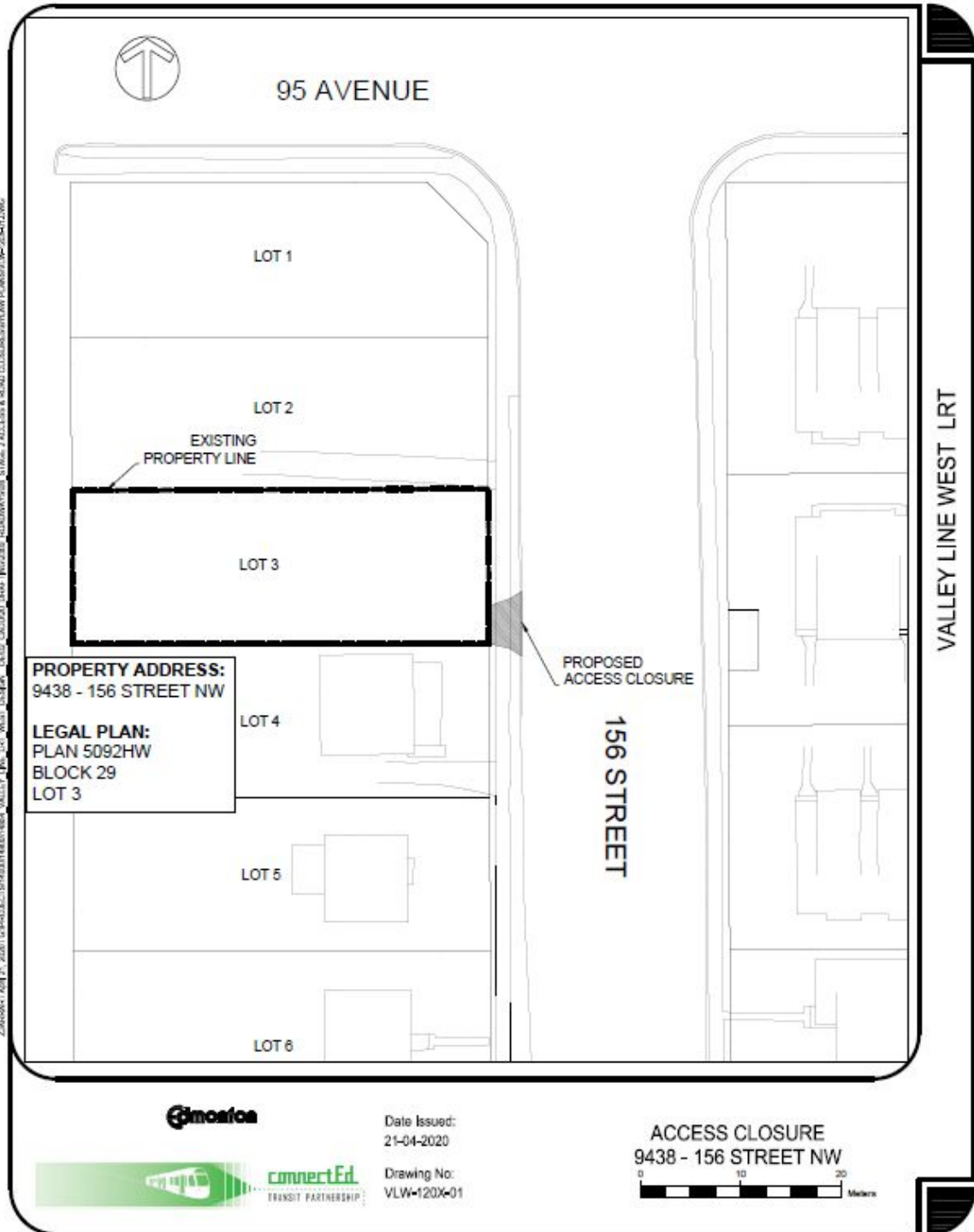


SCHEDULE "A21" TO BYLAW 19317

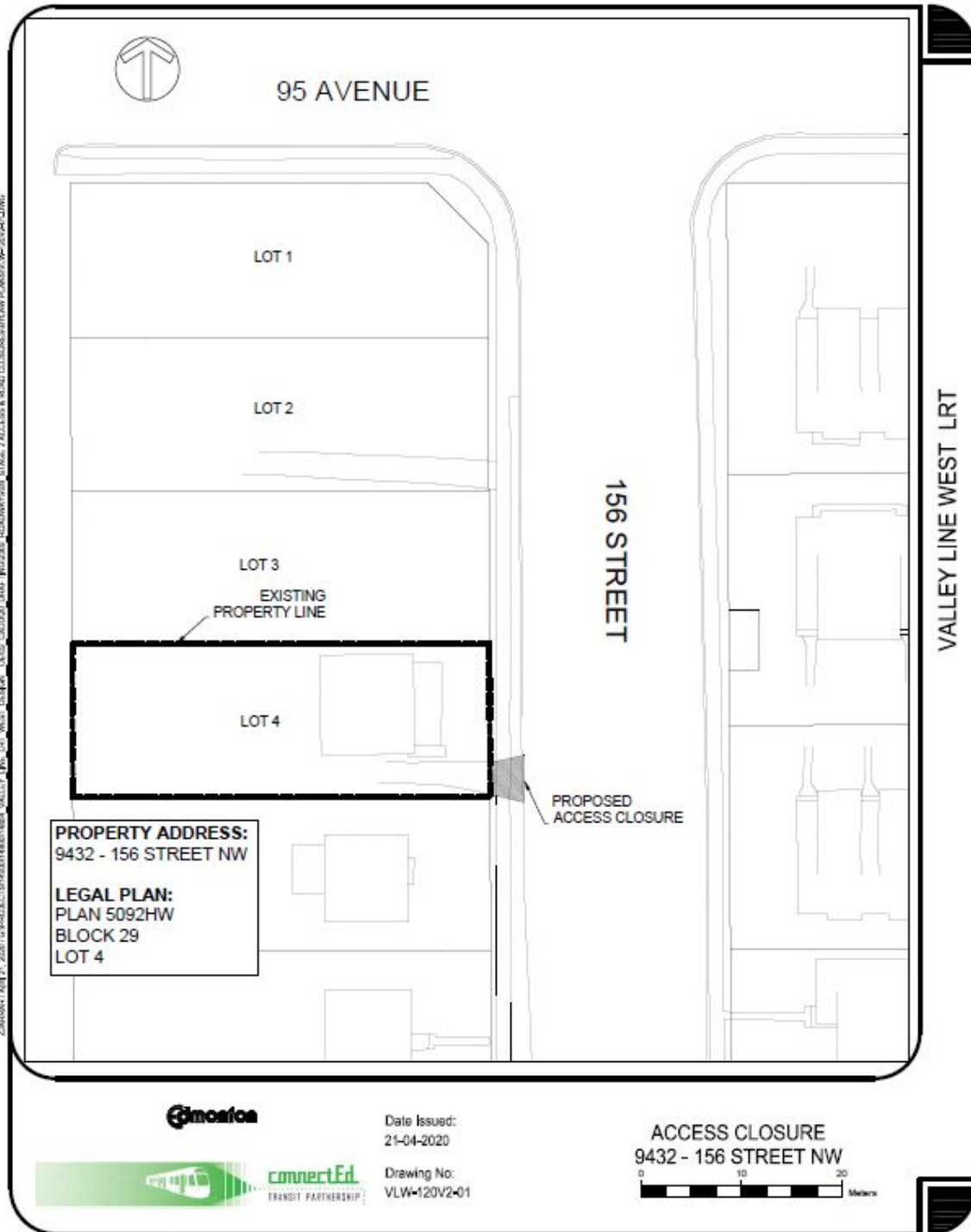


2:\ARBOR\1447 21\_2201\5\PROJECTS\443014\801\VALLEY LINE WEST WEST CLOSURE - CLOSURE\_CLOSURE\_STAGE 2 ACCESS & ROAD CLOSURE\DRAWING PLAN\9444-156-22-01.DWG

SCHEDULE "A22" TO BYLAW 19317

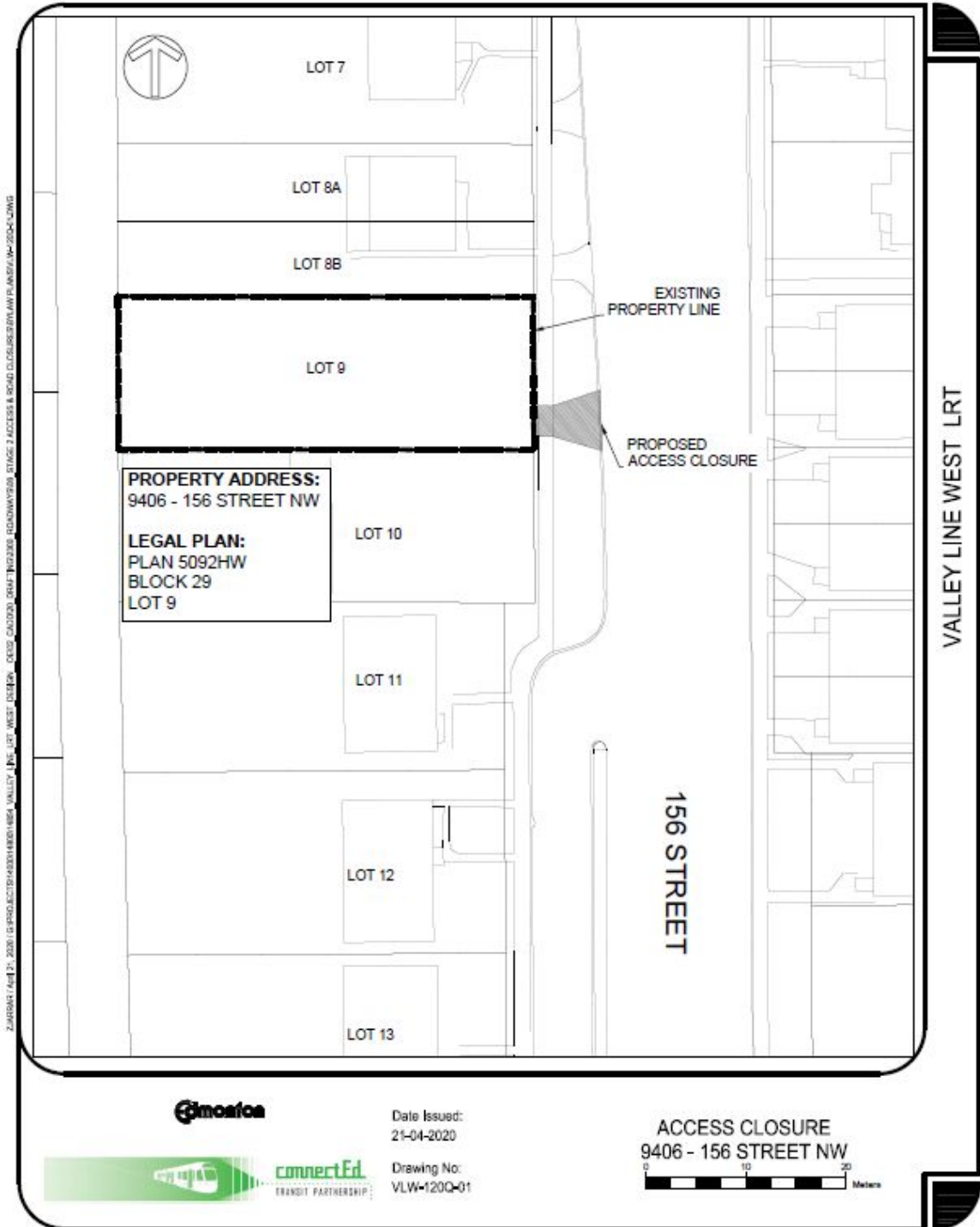


SCHEDULE "A23" TO BYLAW 19317



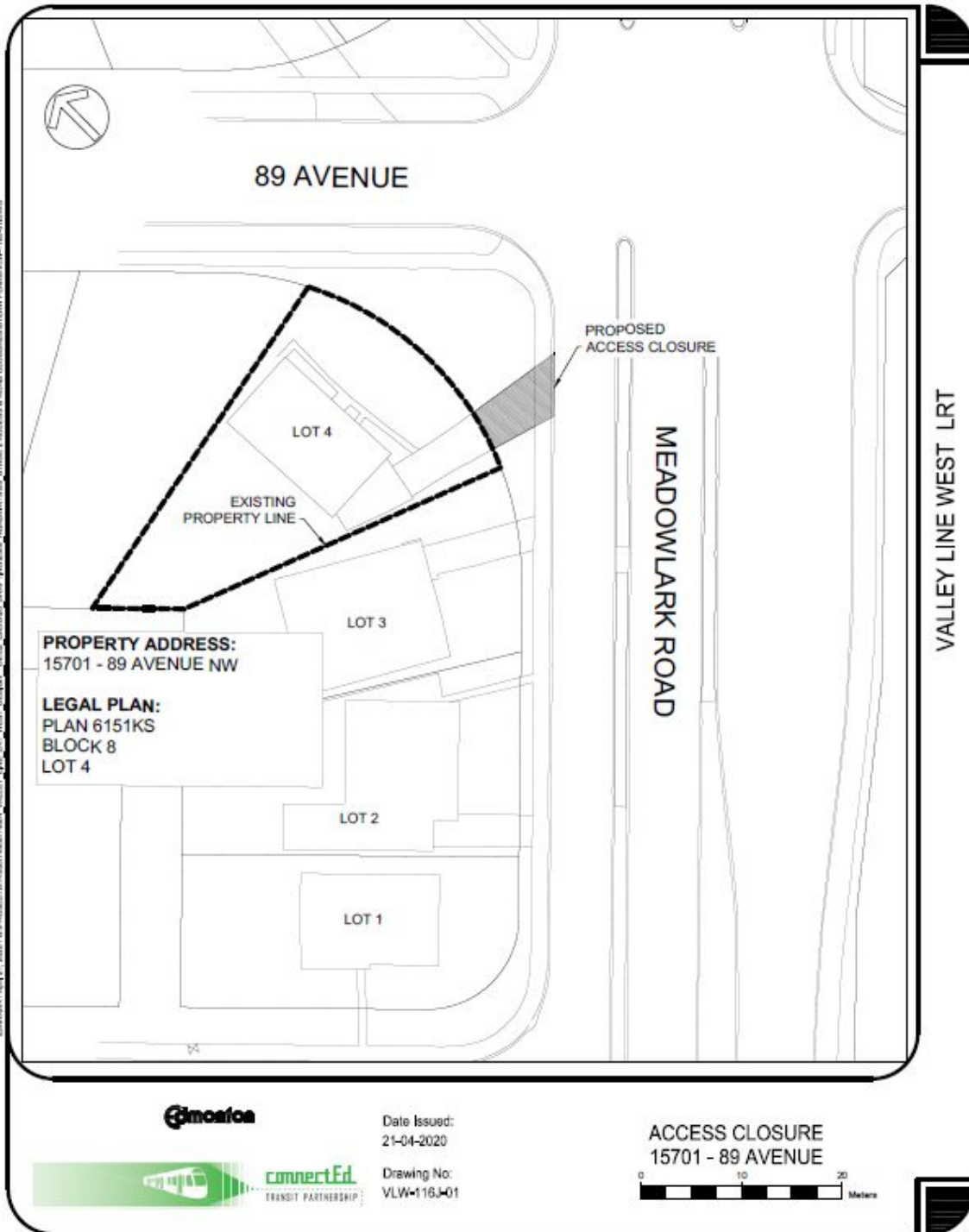


SCHEDULE "A24" TO BYLAW 19317

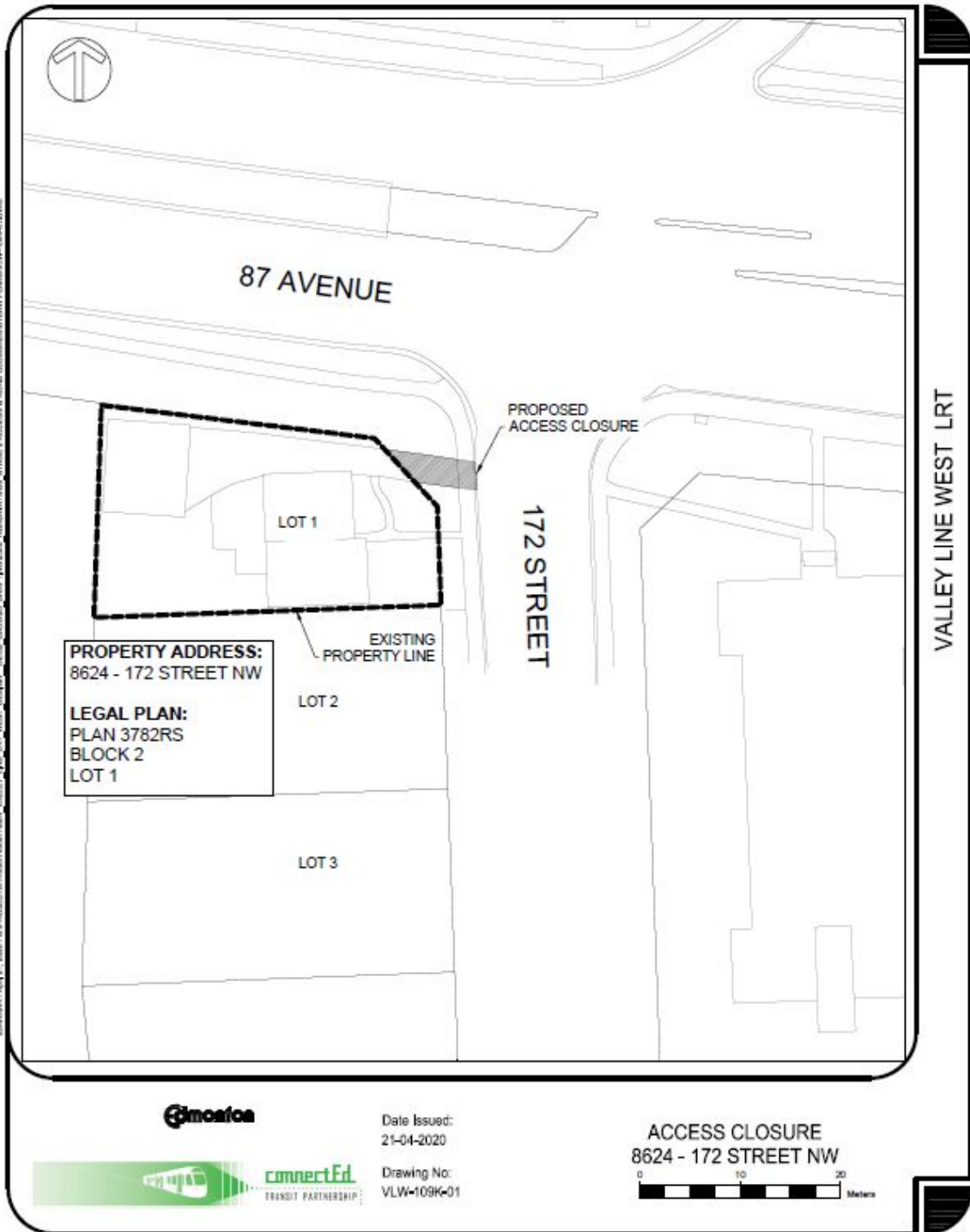




SCHEDULE "A26" TO BYLAW 19317



SCHEDULE "A27" TO BYLAW 19317



SCHEDULE "A28" TO BYLAW 19317

