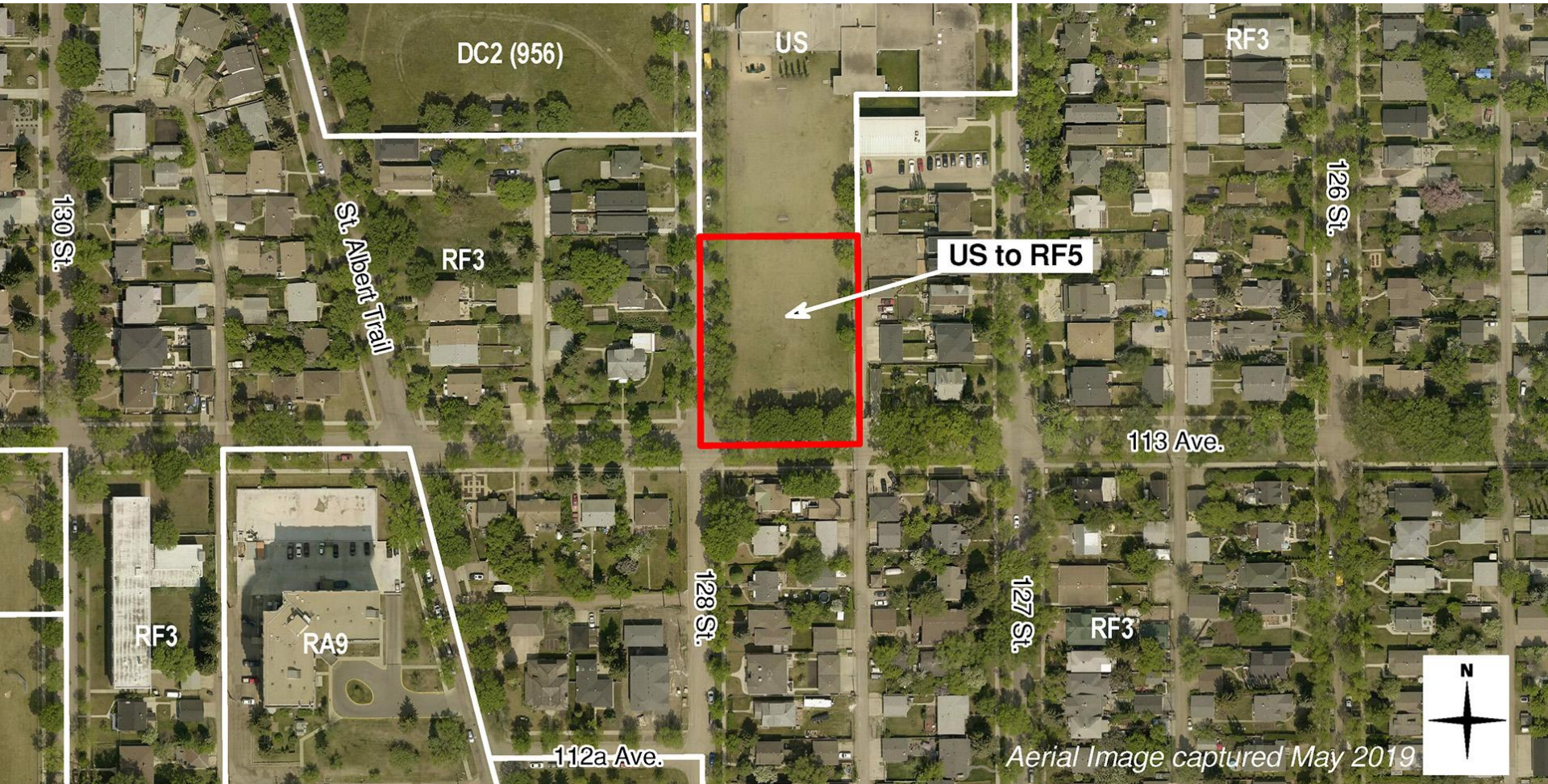
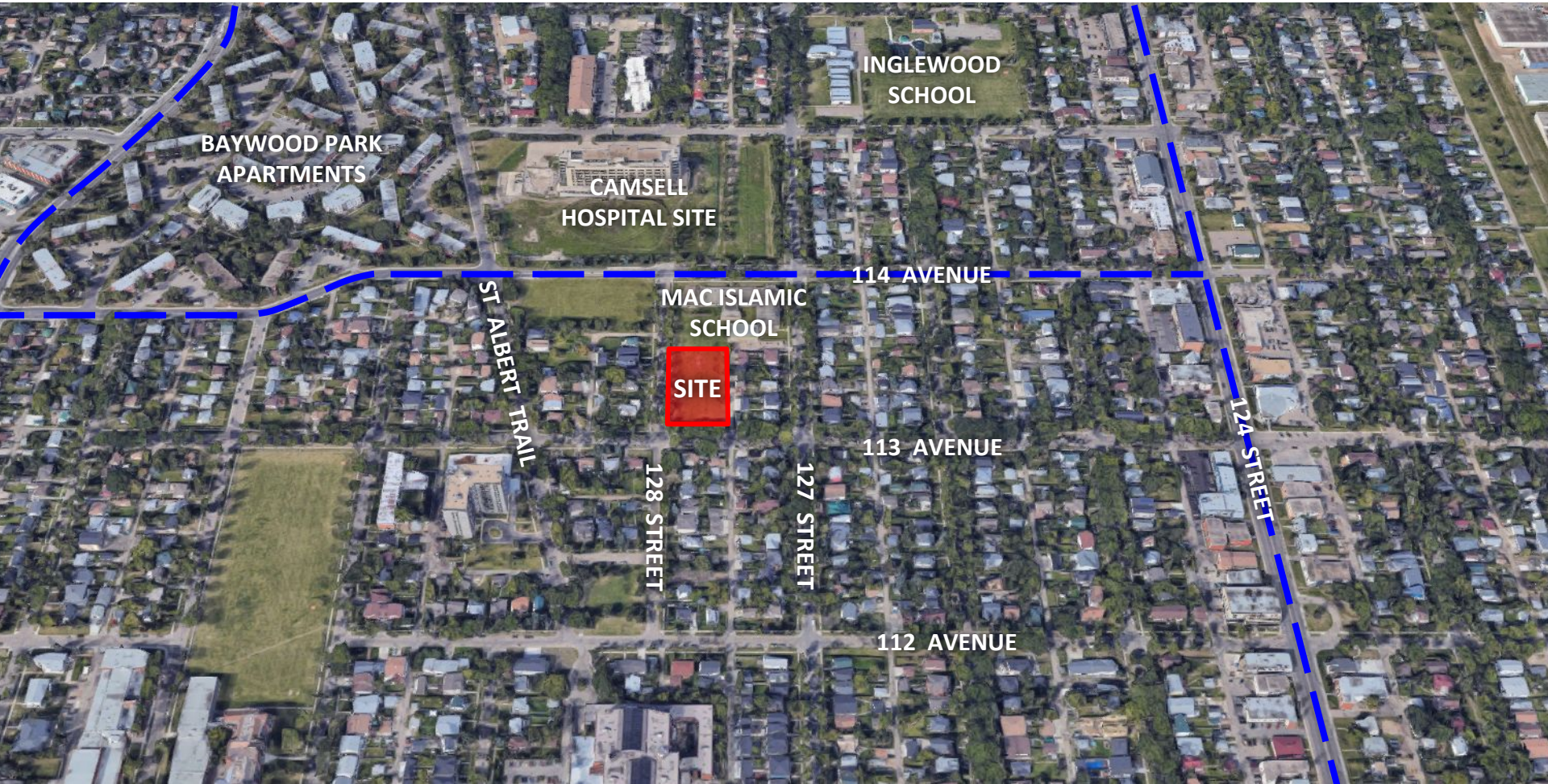


SITE CONTEXT

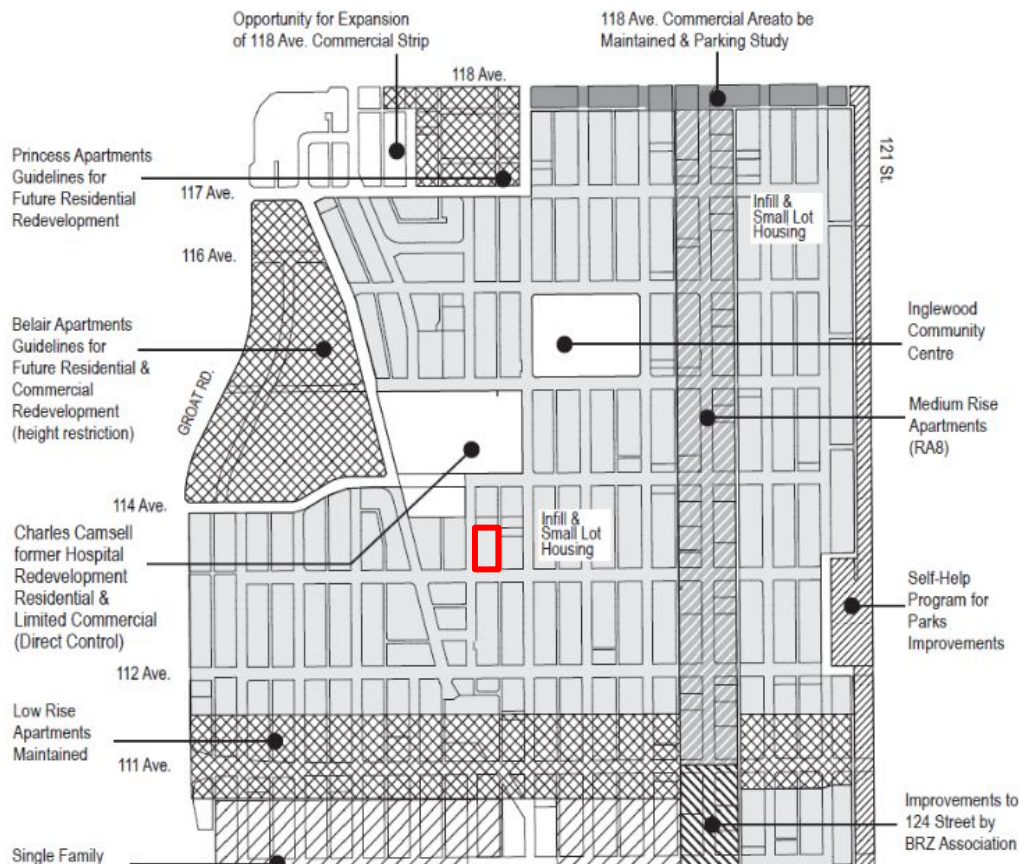


Aerial Image captured May 2019

SITE CONTEXT



WEST INGLE AREA REDEVELOPMENT PLAN



REGULATION	RF3 & MNO (Infill & Small Lot Housing)	RF5 & MNO (Proposed Zoning)
Min Density	None	35 units/ha
Min Site Area / Dwelling	150 m ² (~17 units)	125 m ² (~20 units)
Height	8.9 m	10.0 m
Site Coverage	45%	52%
Setbacks North - School East - Lane	2.0 m ~ 17.0 m	2.0 m 1.2 m

INTERIOR OF INGLEWOOD



(RA7)
Low Rise Apartments
Max. Height: 16 m

(RA7)
Low Rise Apartments
Max. Height: 16 m

(DC2)
Camsell Hospital Site
Max. Height: 11 - 34 m

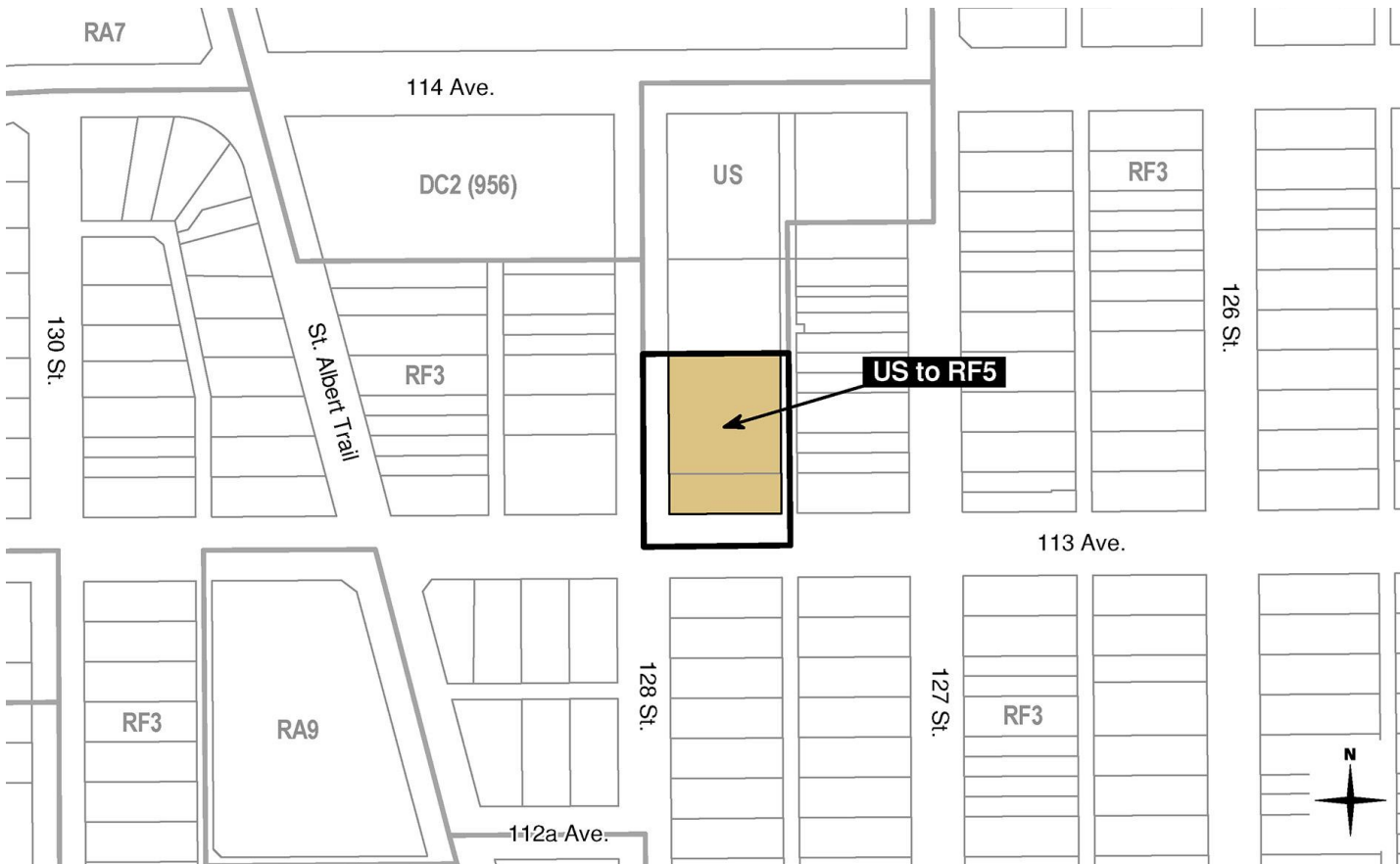
(DC2)
Low Rise Apartment
Max. Height: 16 m

(Proposed RF5)
Row Housing
Max. Height: 10 m

(RA9)
High Rise Apartment
Max. Height: 75 m

114 AVENUE

124 STREET



ADMINISTRATION'S RECOMMENDATION: **APPROVAL**