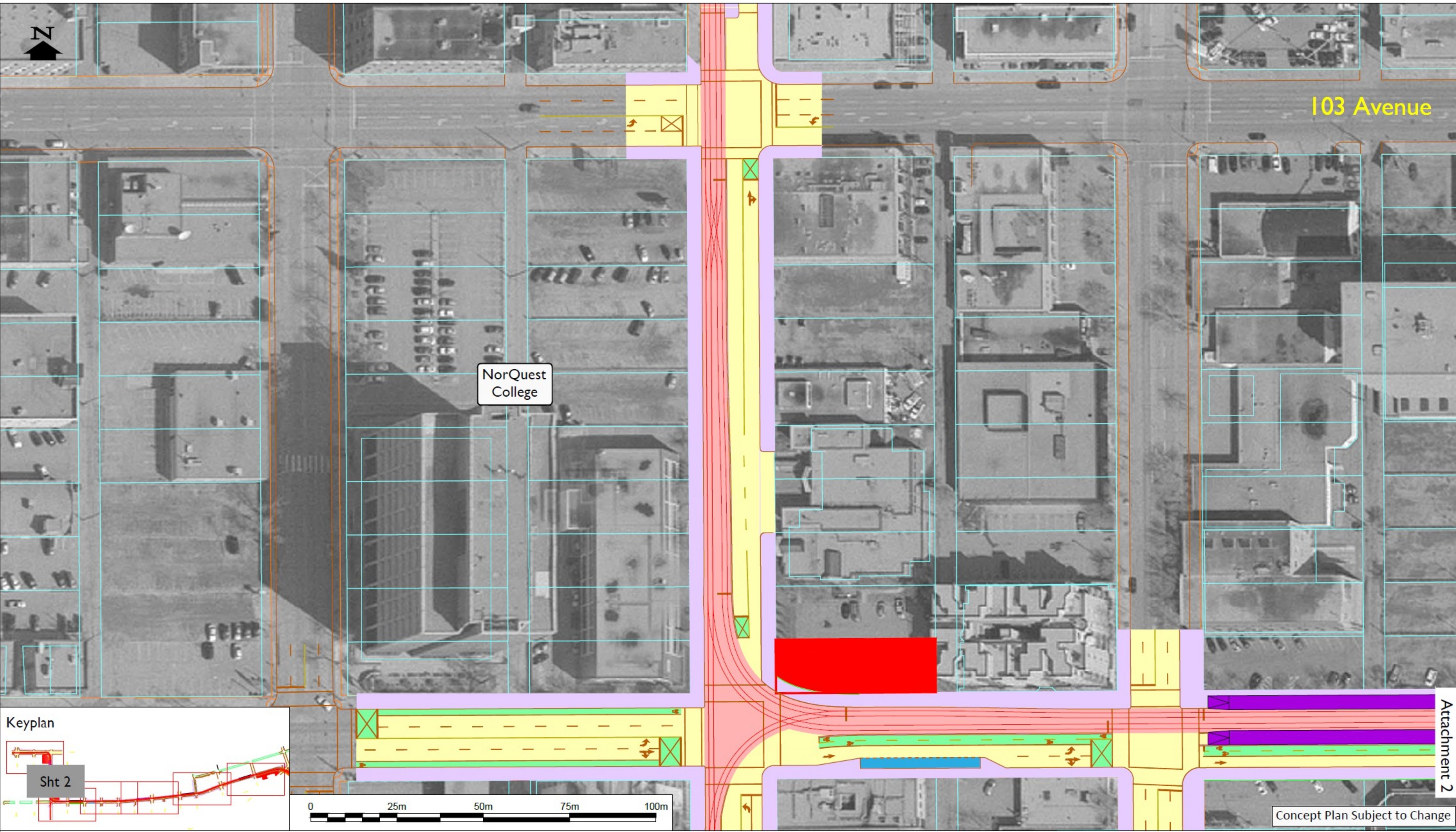


**EDMONTON LRT EXPANSION**  
**Downtown LRT Alignment - 107 Street Stop location**

- |                             |                            |                   |
|-----------------------------|----------------------------|-------------------|
| Potential LRT at Grade      | Potential Roadworks        | Underground LRT   |
| Potential LRT stop platform | Potential cycle facilities | On-Street Parking |
| Potential Property Impact   | Potential sidewalk         |                   |

Concept Plan Subject to Change

Drawing Scale 1:1000 @ 17x11  
 Drawing No. 222005-03-RFC  
 Sheet No. 1 of 7

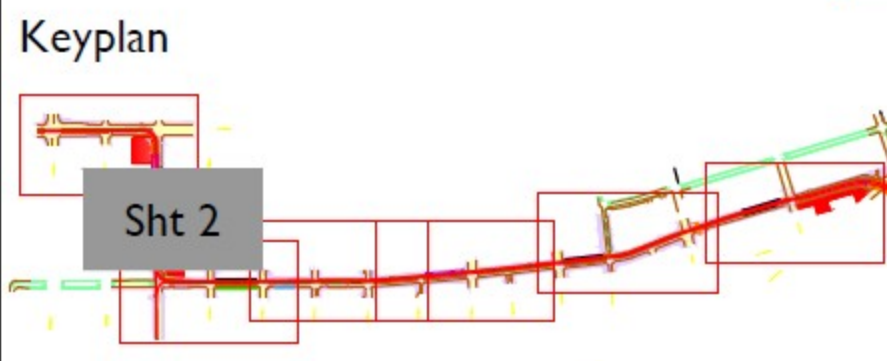


**EDMONTON LRT EXPANSION**  
**Downtown LRT Alignment - 107 STREET location**

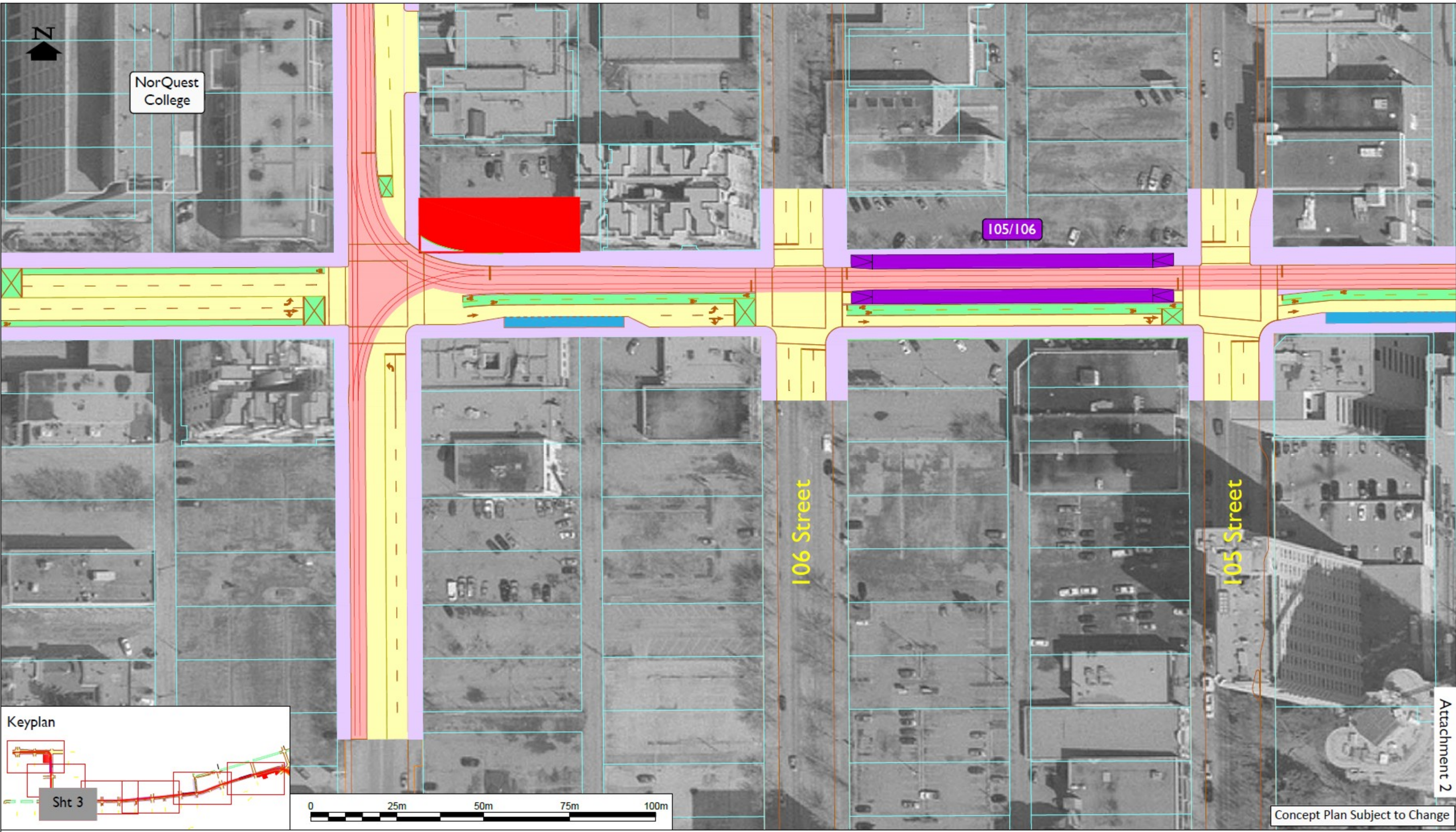
- |   |                             |   |                            |   |                   |
|---|-----------------------------|---|----------------------------|---|-------------------|
|  | Potential LRT at Grade      |  | Potential Roadworks        |  | Underground LRT   |
|  | Potential LRT stop platform |  | Potential cycle facilities |  | On-Street Parking |
|  | Potential Property Impact   |  | Potential sidewalk         |   |                   |

Concept Plan Subject to Change

Drawing Scale 1:1000 @ 17x11  
 Drawing No. 222005-03-RFC  
 Sheet No. 2 of 7



Attachment 2



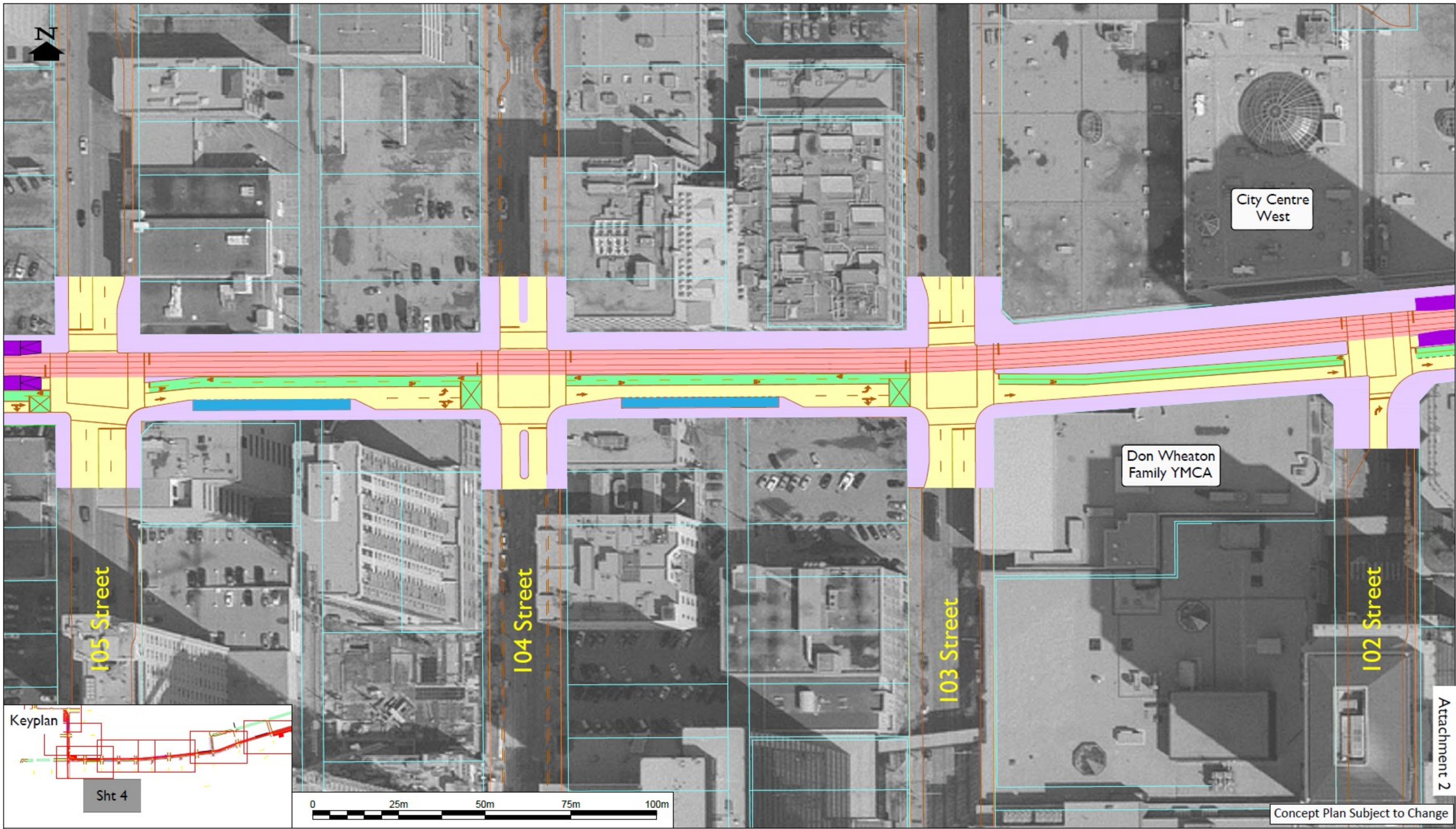
**EDMONTON LRT EXPANSION**  
**Downtown LRT Alignment - 105/106 Stop location**

- |   |                             |   |                            |   |                   |
|---|-----------------------------|---|----------------------------|---|-------------------|
|  | Potential LRT at Grade      |  | Potential Roadworks        |  | Underground LRT   |
|  | Potential LRT stop platform |  | Potential cycle facilities |  | On-Street Parking |
|  | Potential Property Impact   |  | Potential sidewalk         |   |                   |

Drawing Scale 1:1000 @ 17x11  
 Drawing No. 222005-03-RFC  
 Sheet No. 3 of 7

Attachment 2

Concept Plan Subject to Change

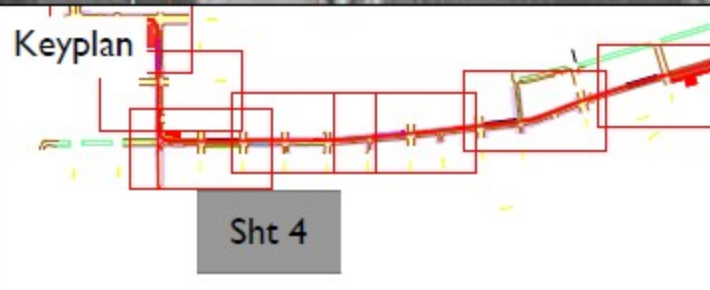


**EDMONTON LRT EXPANSION**  
 Downtown LRT Alignment - 102/105 STREET location

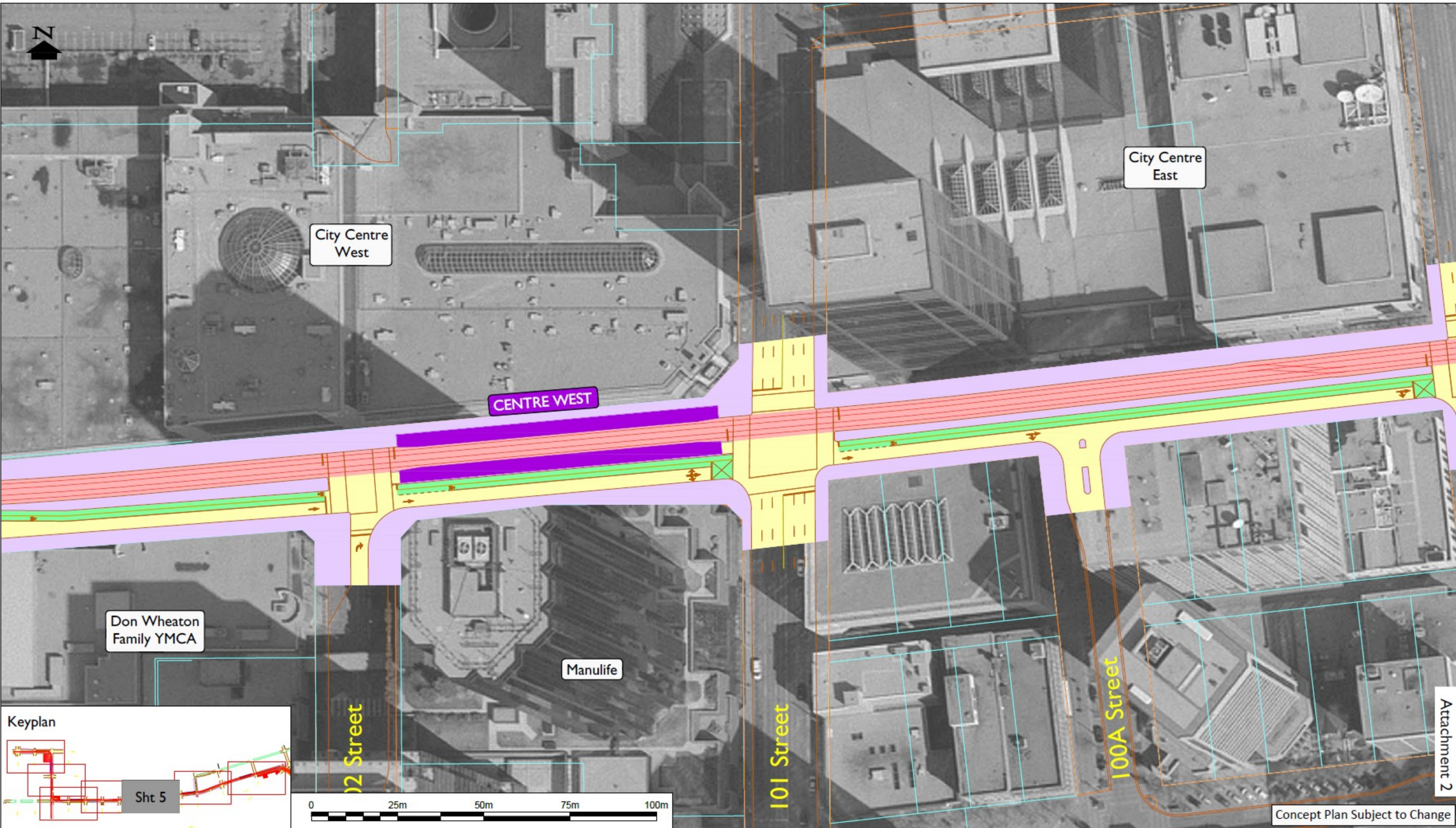
- |   |  |   |
|---|--|---|
|  Potential LRT at Grade      |  Potential Roadworks        |  Underground LRT   |
|  Potential LRT stop platform |  Potential cycle facilities |  On-Street Parking |
|  Potential Property Impact   |  Potential sidewalk         |   |

Concept Plan Subject to Change

Drawing Scale 1:1000 @ 17x11  
 Drawing No. 222005-03-RFC  
 Sheet No. 4 of 7



Attachment 2

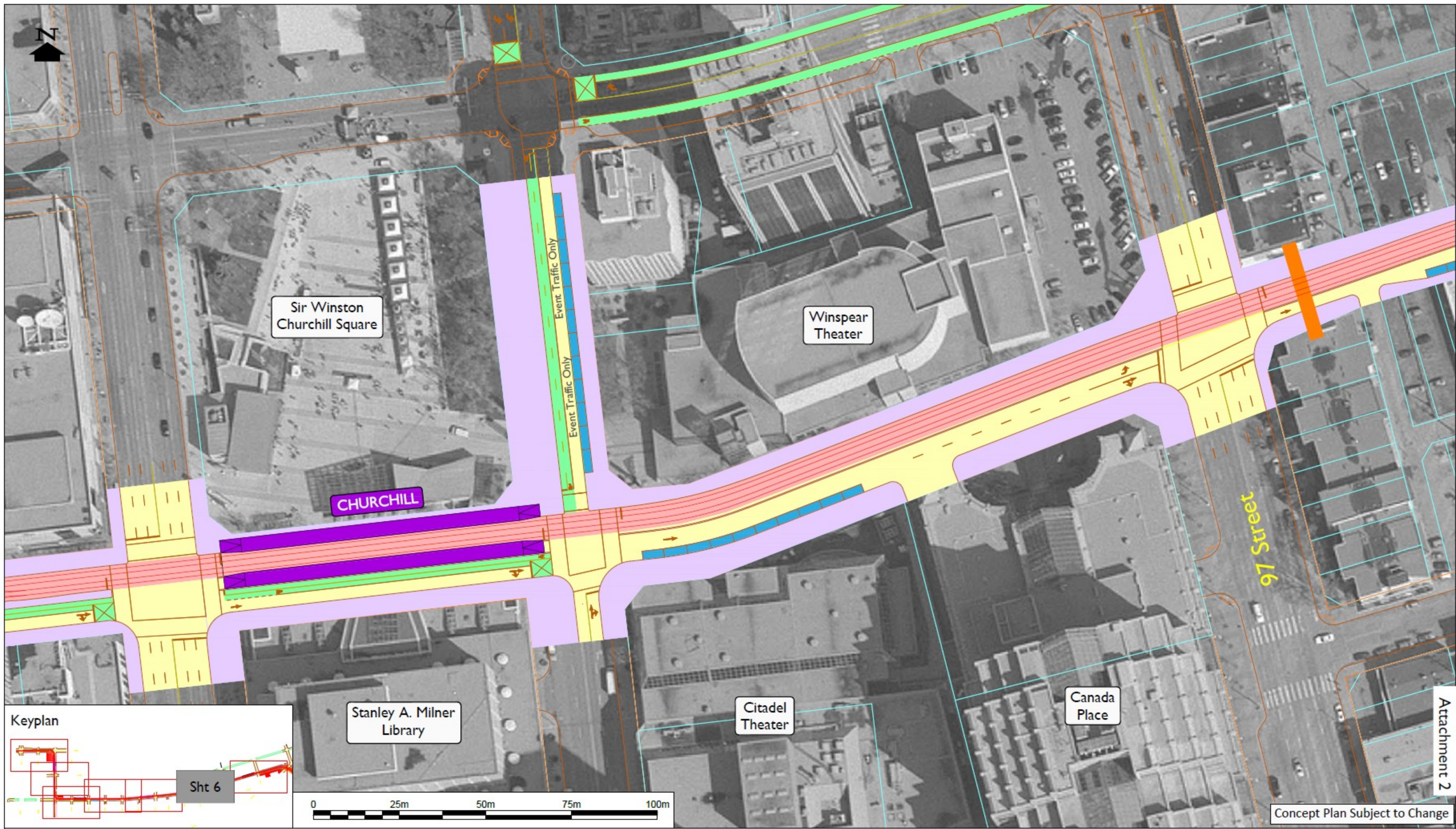


**EDMONTON LRT EXPANSION**  
**Downtown LRT Alignment CENTRE WEST Stop location**

- |   |  |   |
|---|--|---|
|  Potential LRT at Grade      |  Potential Roadworks        |  Underground LRT   |
|  Potential LRT stop platform |  Potential cycle facilities |  On-Street Parking |
|  Potential Property Impact   |  Potential sidewalk         |   |

Concept Plan Subject to Change

Drawing Scale 1:1000 @ 17x11  
 Drawing No. 222005-03-RFC  
 Sheet No. 5 of 7



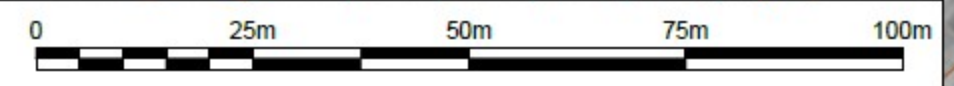
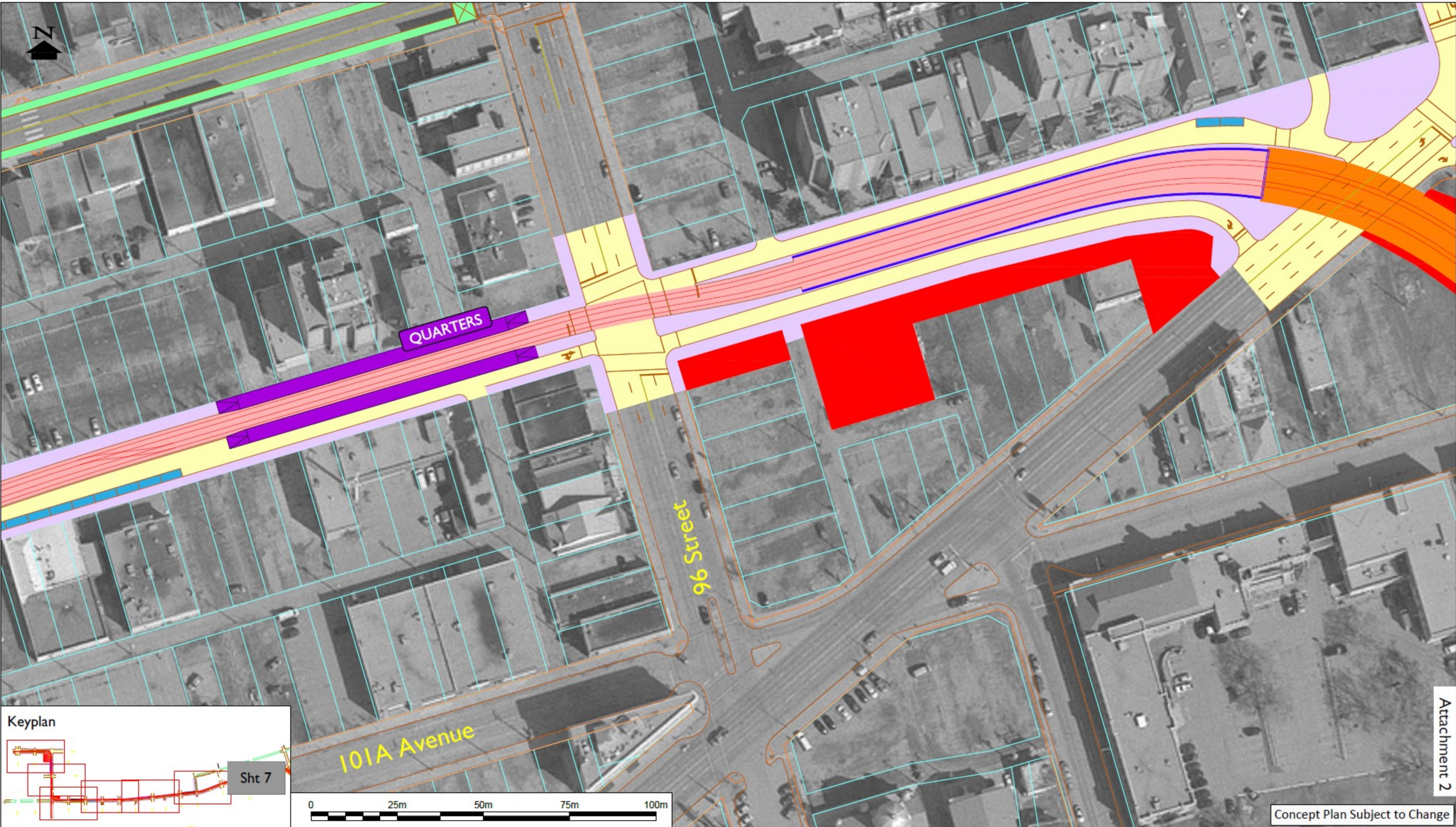
**EDMONTON LRT EXPANSION**  
**Downtown LRT Alignment -CHURCHILL Stop location**

- |   |                             |   |                            |   |                   |
|---|-----------------------------|---|----------------------------|---|-------------------|
|  | Potential LRT at Grade      |  | Potential Roadworks        |  | Underground LRT   |
|  | Potential LRT stop platform |  | Potential cycle facilities |  | On-Street Parking |
|  | Potential Property Impact   |  | Potential sidewalk         |   |                   |

Concept Plan Subject to Change

Drawing Scale 1:1000 @ 17x11  
 Drawing No. 222005-03-RFC  
 Sheet No. 6 of 7

Attachment 2



Concept Plan Subject to Change

# EDMONTON LRT EXPANSION Downtown LRT Alignment - QUARTERS Stop location

- Potential LRT at Grade
- Potential Roadworks
- Underground LRT
- Potential LRT stop platform
- Potential cycle facilities
- On-Street Parking
- Potential Property Impact
- Potential sidewalk

Drawing Scale 1:1000 @ 17x11  
 Drawing No. 222005-03-RFC  
 Sheet No. 7 of 7

Attachment 2