

Open Tenders

\$20,000,000 or Greater (Inclusive of GST) as at November 29, 2010

Recommendation:

That Administration award the tender projects, as outlined in Attachment 1 of the January 19, 2011, Corporate Services Department report 2010COP009, and enter into all relevant agreements such tenders to be in accordance with Administration's normal tendering guidelines.

Report Summary

This report requests approval on open tenders greater than \$20,000,000.

Previous Council/Committee Action

At the December 13, 2010, Agenda Review Committee meeting, the January 19, 2011, Corporate Services Department report 2010COP009 was postponed to the January 19, 2011, City Council meeting.

Report

As per City Administration Bylaw 12005, open tenders greater than \$20,000,000 require Committee approval.

Policy

City Administration Bylaw 12005
Administrative Directive A1439 –
Purchasing of Goods, Services and
Construction.

Focus Area

Economic Development

Attachments

1. Open Tenders \$20,000,000 or Greater (Inclusive of GST) as at November 29, 2010
2. Expanded Information – Engineering Services Office and Laboratory Drawing

Open Tenders \$20,000,000 or Greater (Inclusive of GST) as at November 29, 2010

Classifications

- A - \$20 Million to \$30 Million
- B - \$30 Million to \$50 Million
- C - \$50 Million to \$75 Million
- D - \$75 Million to \$100 Million
- E – Over \$100 Million

<u>Item Number</u>	<u>Description</u> <u>Department Name</u>	<u>Closing Date</u>	<u>Class</u>
T1	Tender No. 918951A Engineering Services Office and Laboratory	February 1, 2010	A 20M – 30M

The Work to be undertaken under the Contract involves but is not limited to:

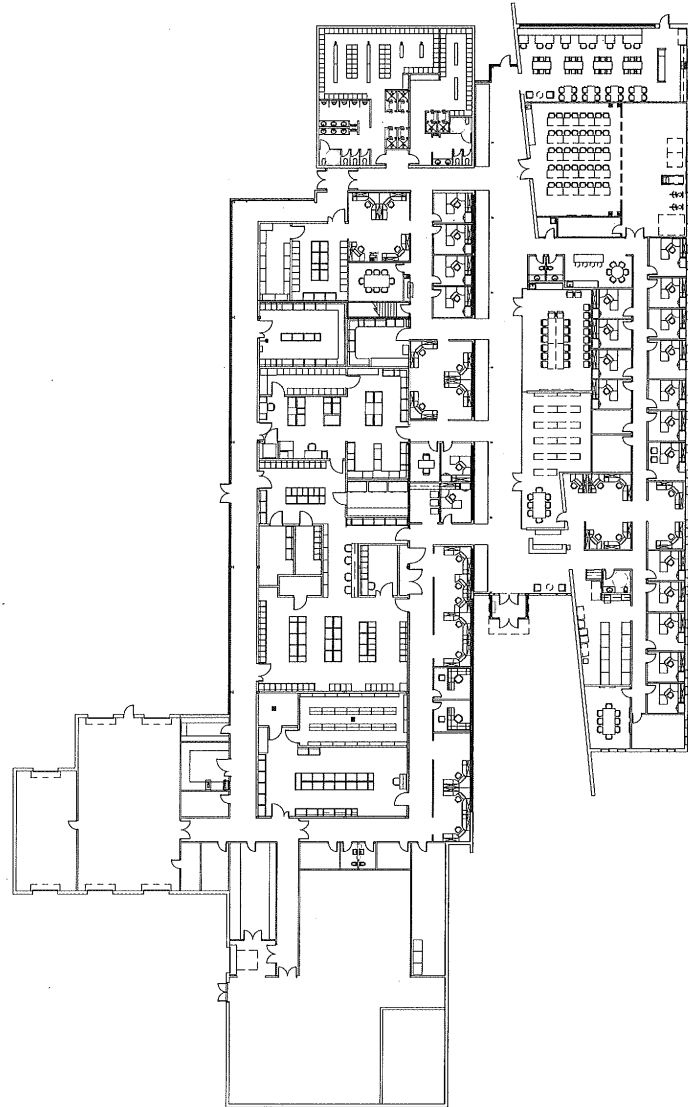
The proposed construction of the new Engineering Services Building and Lot Development is located in White Industrial Subdivision at the SW corner of 111th Avenue and 190th Street. The overall site area is 3.63 hectares. Water, sanitary, storm, power, telephone and gas distribution systems are available from 190th Street. The proposed development consists of a 3,820 square meter single storey office/materials engineering laboratory building with surface parking and a storage yard. The facility will achieve LEED Silver certification. The estimated start date for construction is March 1, 2011 and will take place approximately twelve to fourteen months to complete. The current total project estimate is (design development phase) is valued at a maximum of \$21.8 million including twenty percent construction contingency.

Capital Construction – Building Design and Construction

Expanded Information – Engineering Services Office and Laboratory Drawing

City of Edmonton
COHOS EVAMY
INTERIORS DESIGN
ARCHITECTURAL
SERVICES
ARCHITECTURE

ARCHITECTURAL
FLOOR PLAN A2.01



ENGINEERING SERVICES BUILDING
DESIGN DEVELOPMENT REPORT