

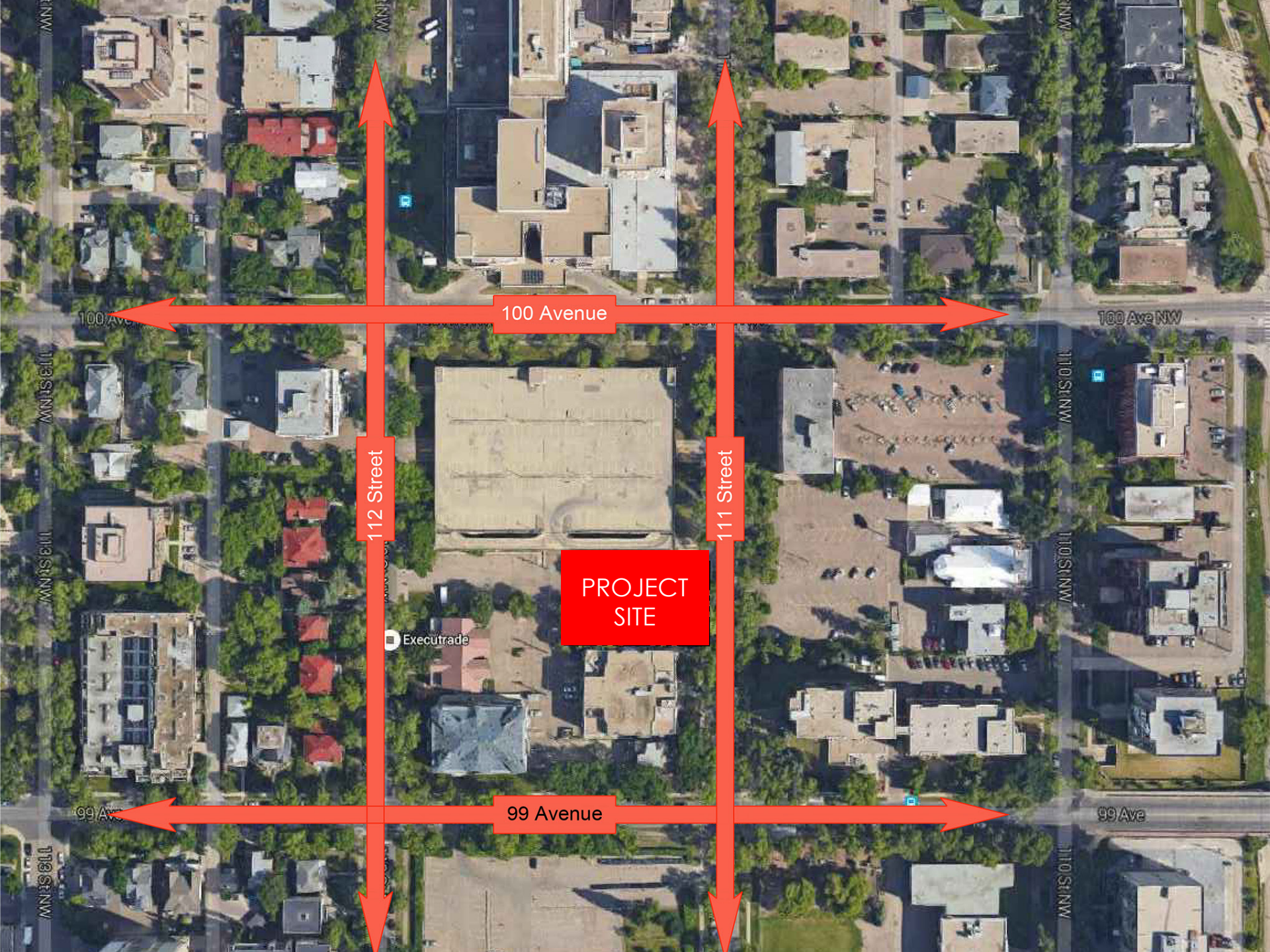
The View DC2 Rezoning Bylaw 19421



WESTRICH
PACIFIC CORP.

 **Stantec**


**CHRIS DIKEAKOS
ARCHITECTS INC.**



100 Avenue

100 Ave NW

112 Street

111 Street

PROJECT
SITE

Executrade

99 Ave

99 Avenue

99 Ave

What's Changed

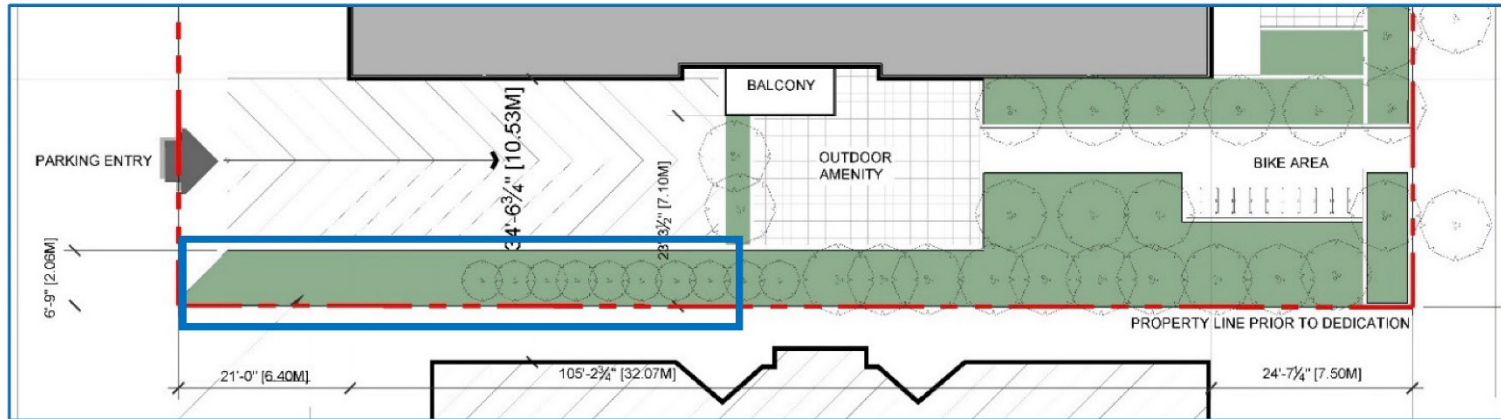
Intent

- Improve safety and functionality of the underground parkade

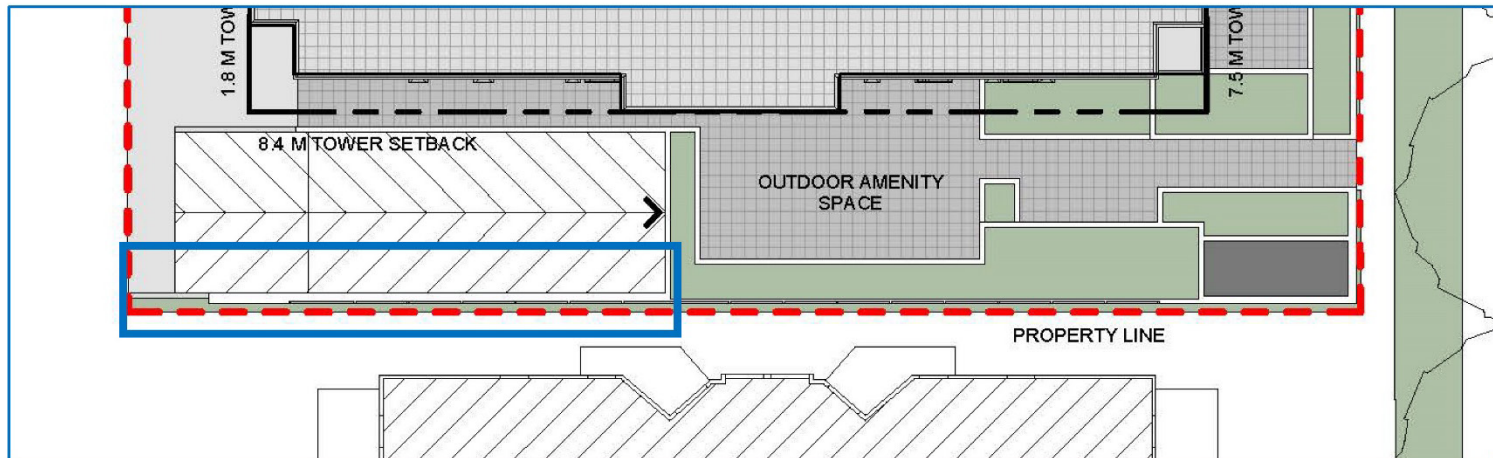
Design Response

- Shift at grade parkade entry ramp 1.4 m to the south

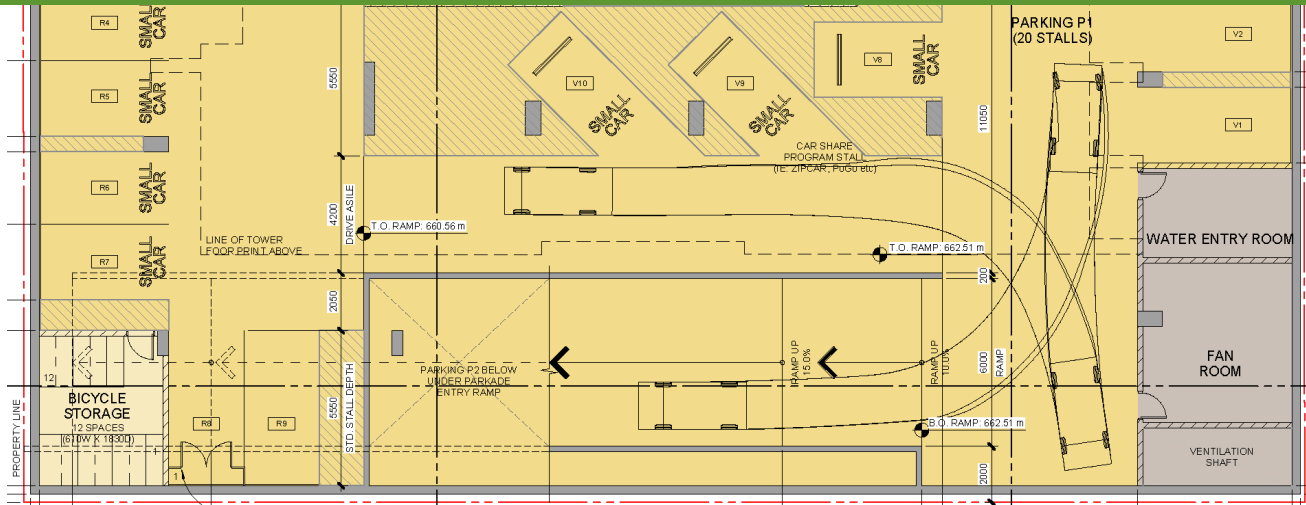
Proposed Parkade Ramp Relocation



PORTION OF SITE PLAN FROM EXISTING DC2 PROVISION



PORTION OF SITE PLAN FROM PROPOSED DC2 PROVISION



WESTRICH
PACIFIC CORP.



THE VIEW

9920 AT GRANDIN CITY

Thank you! Questions?