

Integrated Infrastructure Services

Infrastructure Delivery

Edmonton

Mill Creek Ravine Pedestrian Bridges Project

Environmental Impact Assessment

Urban Planning Committee / City Council
October 13, 2020

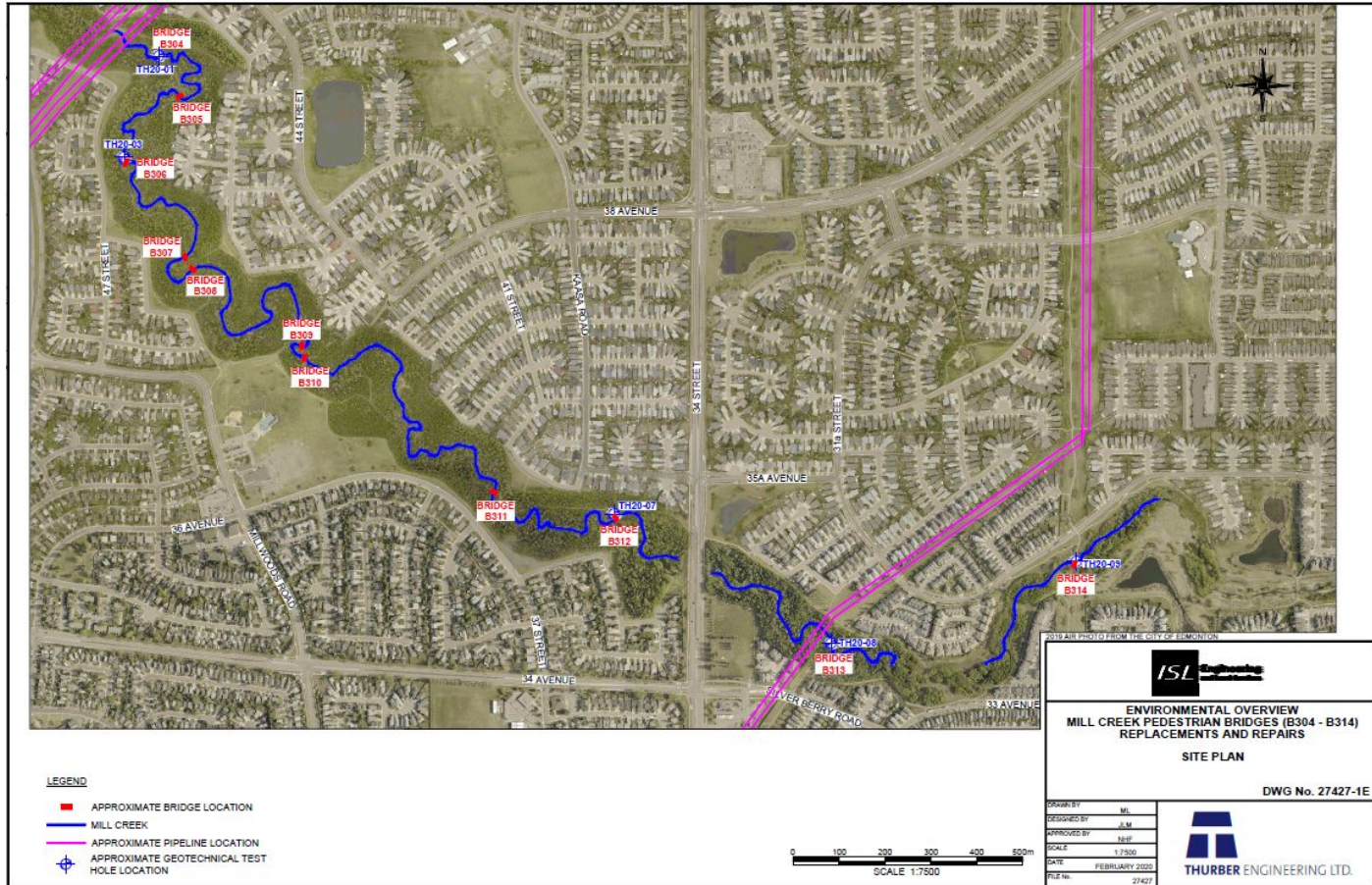
IIS00031

Project Overview

- Mill Creek Ravine is a valued recreational resource, extensively used by many types of users throughout the year.
- 11 pedestrian bridges are experiencing progressive deterioration. Renewal is required for bridges to remain in service.



Project Overview



Project History

- Maintenance activities are unable to correct the deterioration - bridge replacement is required.
- All of the bridges are located within the North Saskatchewan River Valley Area Redevelopment Plan (ARP).
- Environmental Impact Assessment (EIA) and Site Location Study (SLS) was completed in August 2020 for the replacement of the bridges.

Environmental Context

- The Province does not claim ownership of the bed and shore of Mill Creek between 17 street and 51 avenue under Section 3 of the Public Lands Act.
- The land is owned by the City of Edmonton and Alta Link.
- Rare plant potential of the project area is considered moderate, though **no rare plants or rare ecological communities were observed.**
- A fisheries assessment was completed and the works are considered to be of **low risk to fish and fish habitat.**

Environmental Context

- A hydraulic assessment was completed, rip rap is recommended for each bridge to manage erosion and the bridges being raised for better hydraulics and larger flood events.
- 24 vertebrate wildlife species of conservation concern were noted in a desktop wildlife assessment, and 18 species were observed during the site visit. Several important habitat features for nesting raptors and owls were also noted.
- Historical Resources Application was completed. Alberta Culture required an Historical Resource Impact Assessment (HRIA) at six bridges.
 - HRIA is complete with no significant findings.
 - Alberta Culture is currently reviewing the report.

Environmental Context

- Some earthworks, tree, shrub and vegetation removal for construction and temporary workspace will occur and a Tree Preservation Plan is being developed.
 - Vegetation is expected to be re-planted or re-seeded and, in time, return to previous conditions where hardscaping is absent.
- Information will be shared with the general public and impacted stakeholders through a pre-construction information session.

Project Schedule/Next Steps

- Construction to start in the Winter 2021 and be completed in Fall 2021.

Thank you.

Questions?

Integrated Infrastructure Services
Infrastructure Delivery
edmonton.ca/webpage

Edmonton