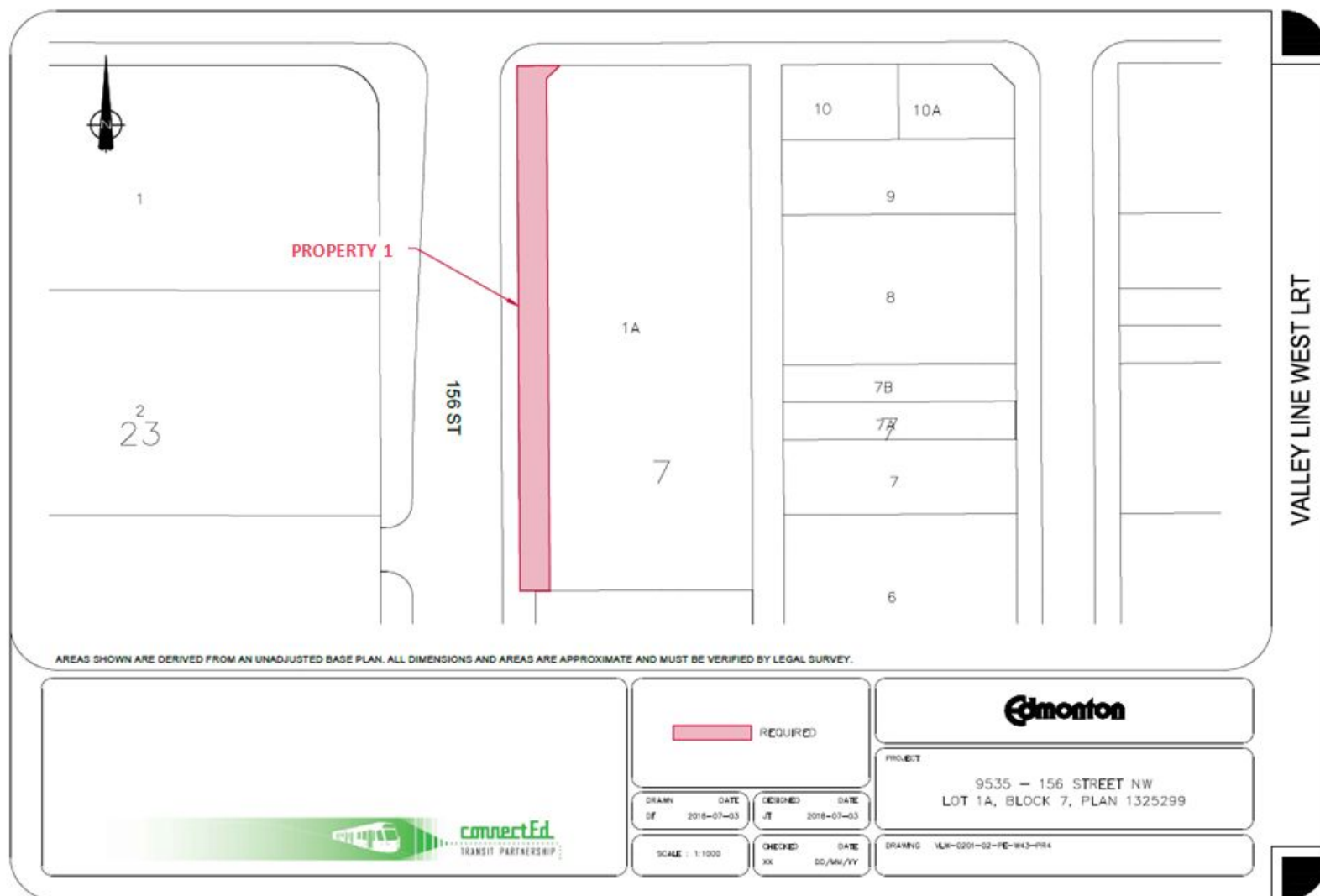
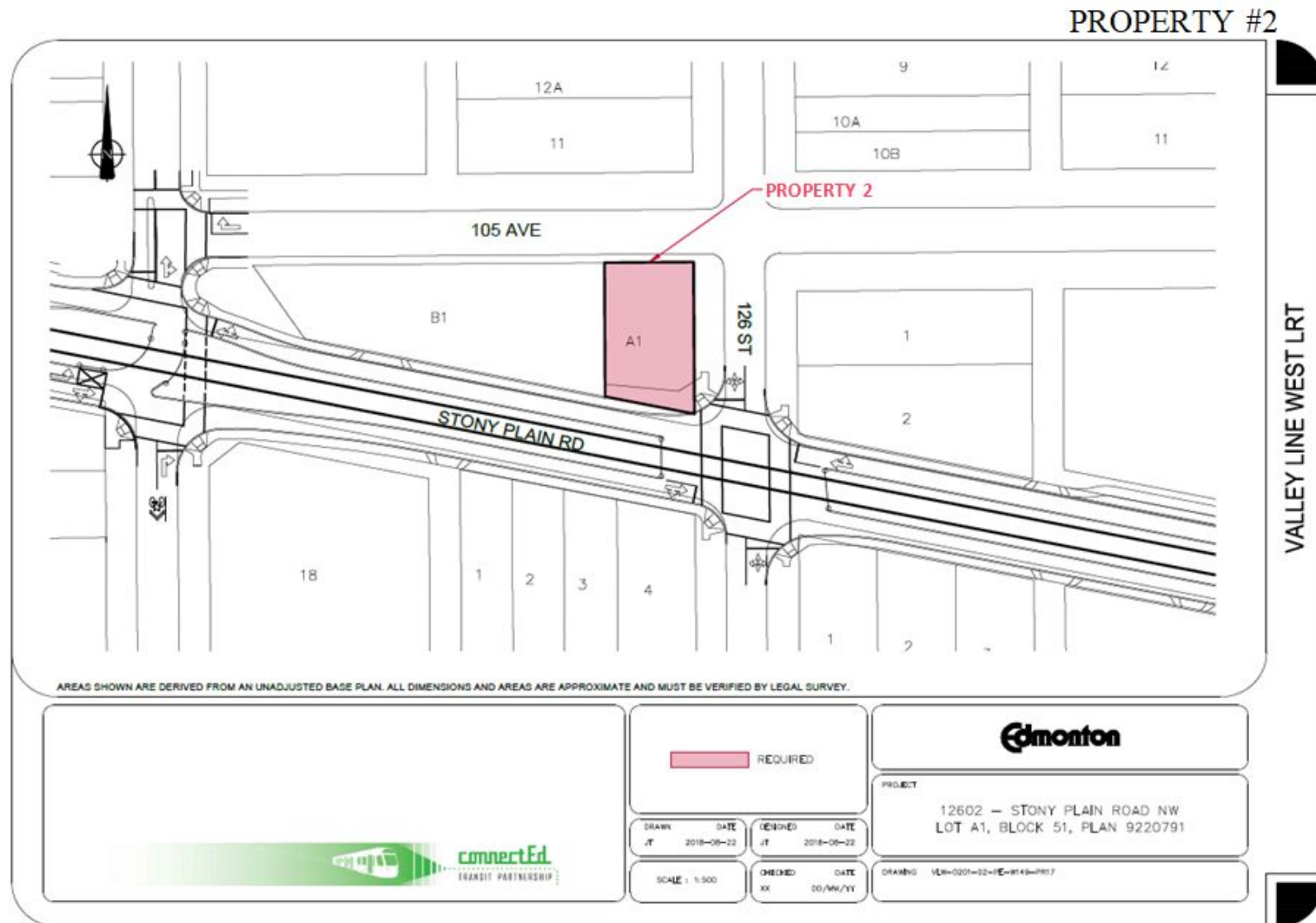


## Map of Subject Properties

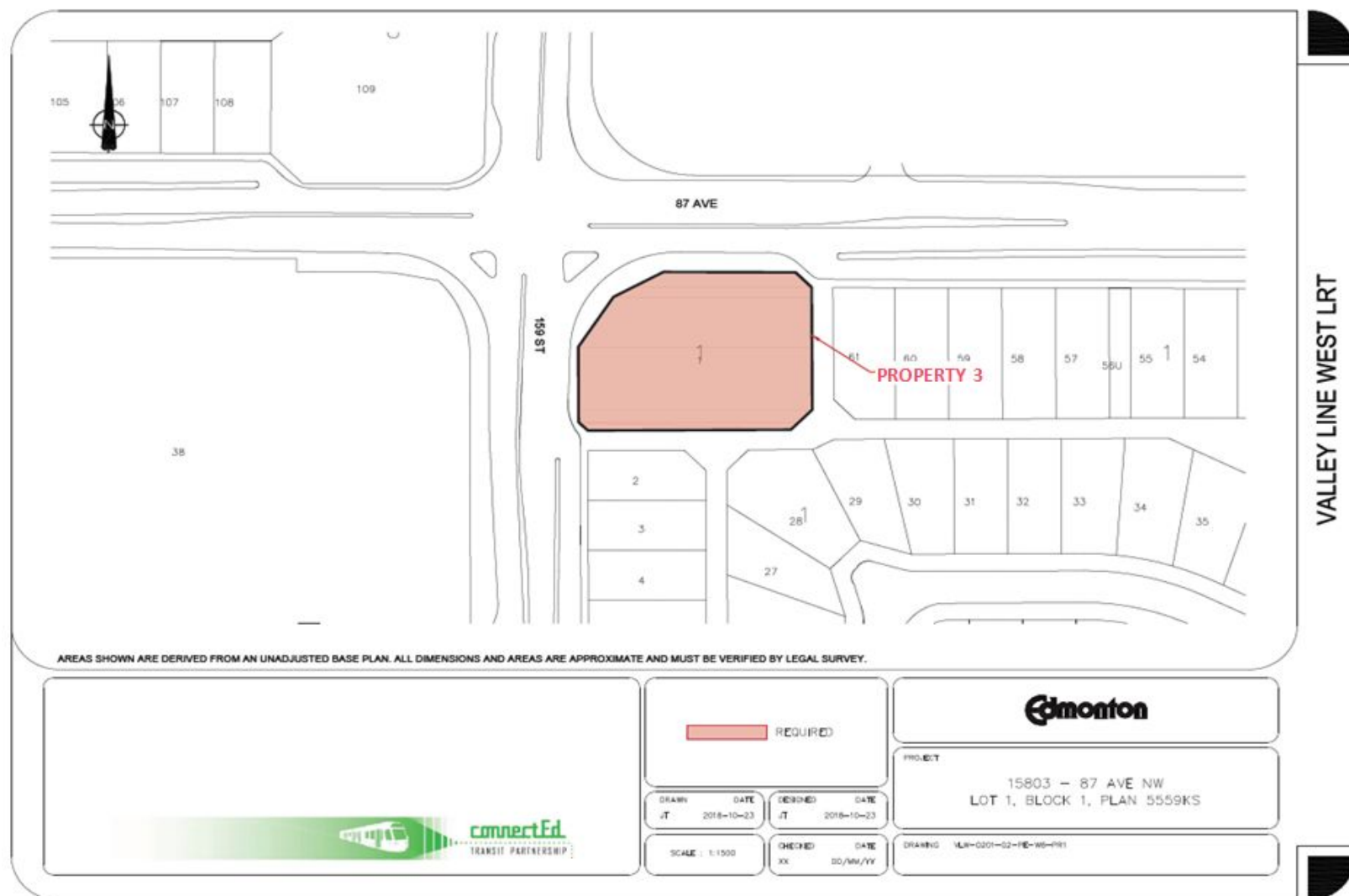
Property Number	Municipal Address(es)	Approval to Commence Expropriation Report Date, Number and Property Number
1	9535 - 156 Street NW	October 15, 2018 - Integrated Infrastructure Services CR_6154 (Property 4)
2	12602/12606 Stony Plain Road NW	October 15, 2018 - Integrated Infrastructure Services CR_6154 (Property 17)
3	15803 - 87 Avenue NW	January 28, 2019 - Integrated Infrastructure Services CR_6631 (Property 1)
4	9925 - 156 Street NW	January 28, 2019 - Integrated Infrastructure Services CR_6631 (Property 3)

PROPERTY #1





## PROPERTY #3



## PROPERTY #4

