

Unpaved road - Asset Classification:

1. **Arterial** - provide capacity for larger volumes of traffic (people driving as well as those riding transit, walking and wheeling, cycling, and delivering goods) between areas with relatively few and controlled access points. Their primary function is mobility, but they also provide some land access.
2. **Collector** - provide neighbourhood travel between residential and arterial streets with direct access to adjacent land. Their function is to provide both mobility and access.
3. **Industrial** - provide low capacity access to frontage of industrial properties and businesses.
4. **Residential** - provide direct access to adjacent lands and serve neighbourhood travel. Their primary function is access, but they also provide some through travel.

2020 City inventory of Unpaved Roads:

Asset Category	Asset	Surface Type	Length	Unit
Road	Arterial	Gravel	23.8	km
		Oiled	120.7	km
	Collector	Gravel	10.2	km
		Oiled	21.4	km
	Industrial Collector	Gravel	1.6	km
		Oiled	5.2	km
	Industrial	Gravel	11.5	km
		Oiled	18.4	km
	Residential	Gravel	20.7	km
		Oiled	30.0	km
Alley	Industrial	Gravel	5.4	km
	Residential	Gravel	62.0	km
Total			331.1	km

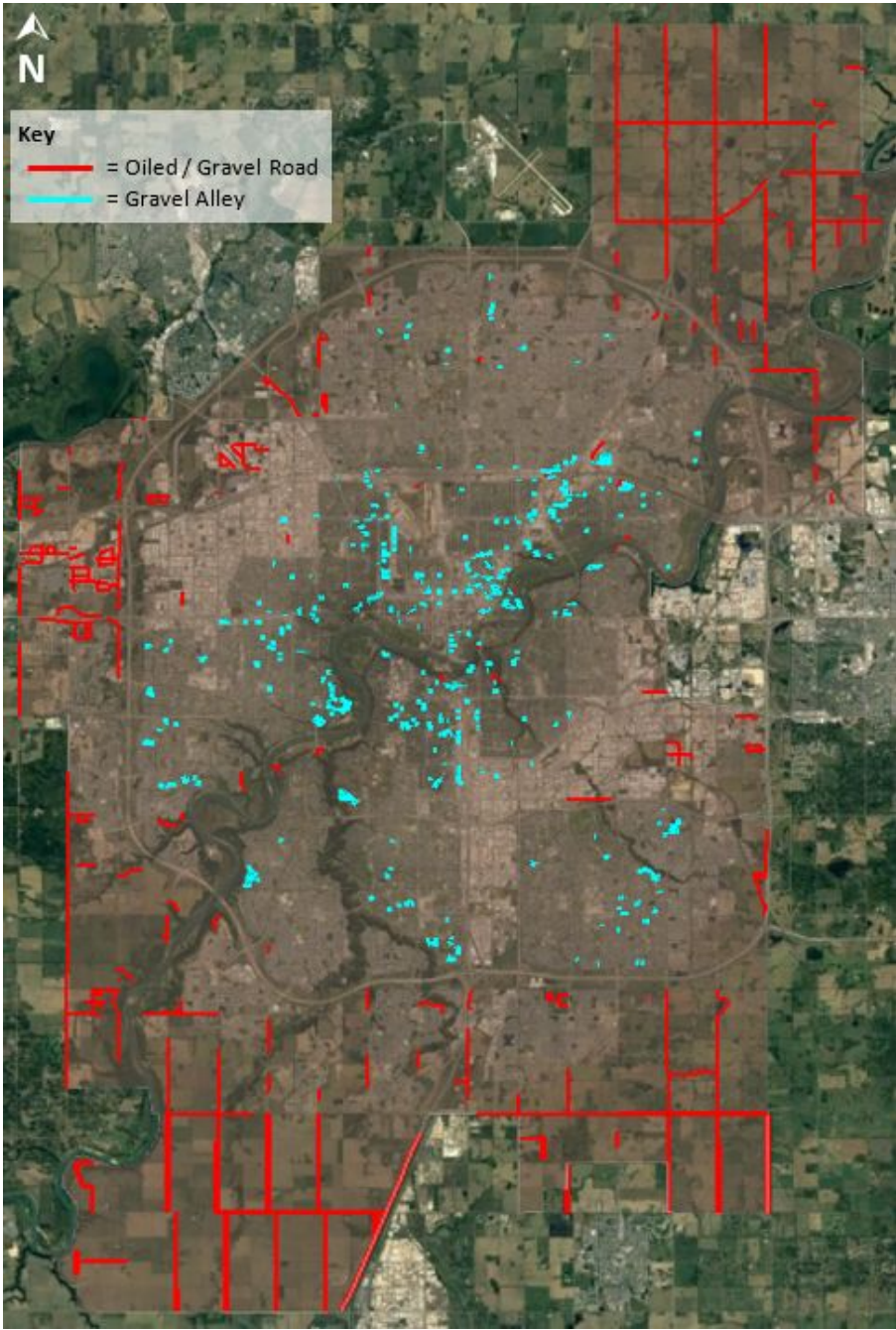


Figure 1: Map of City of Edmonton Unpaved Road assets

2020 City inventory of Annexed Road:

Annexation	Asset	Surface Type	Length	Unit
Leduc	Arterial	Surface Treated	20.71	km
		Gravel	16.15	km
	Residential	Surface Treated	5.44	km
		Gravel	5.39	km
	Collector	Surface Treated	2.69	km
		Gravel	3.33	km
Beaumont	Residential	Gravel	0.50	km
Total			54.21	km