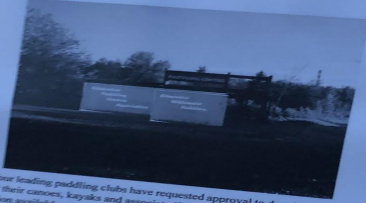


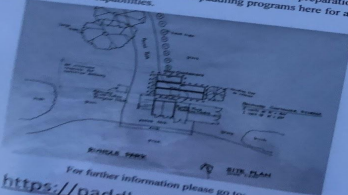


North Saskatchewan River Valley

## Temporary Storage Expansion to the Rundle Park Paddling Centre



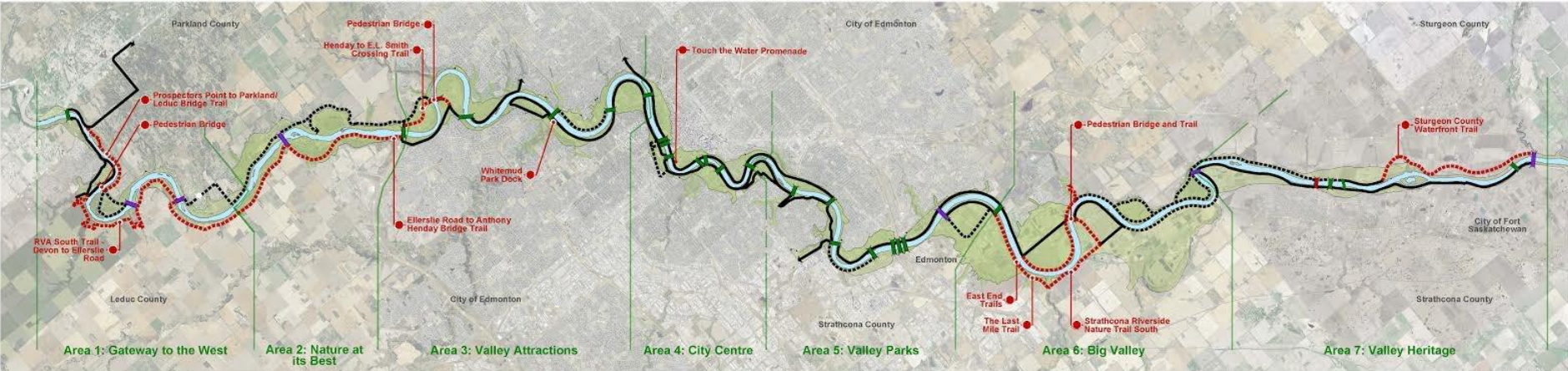
Edmonton's four leading paddling clubs have requested approval to develop additional storage on this site for their canoes, kayaks and associated paddling gear. This site was determined to be the best option available at present given the present Edmonton Paddling Centre lease, and paddlers long use of this site. Site preparation and container delivery is expected to occur this Fall 2020. Final site clean-up and container finishing will occur in spring 2021. It is expected that there will be minimal impact to this site and trails during site preparation and container delivery. This proposal will allow for increased paddling programs here for a wide variety of paddlers, ages, genders and capabilities.



For further information please go to:  
<https://paddleuaps.ca/storage>



Edmonton Paddling Centre Association  
plans for Rundle Park Paddle Centre



Air Photo Source: Google Maps, Feb. 2018

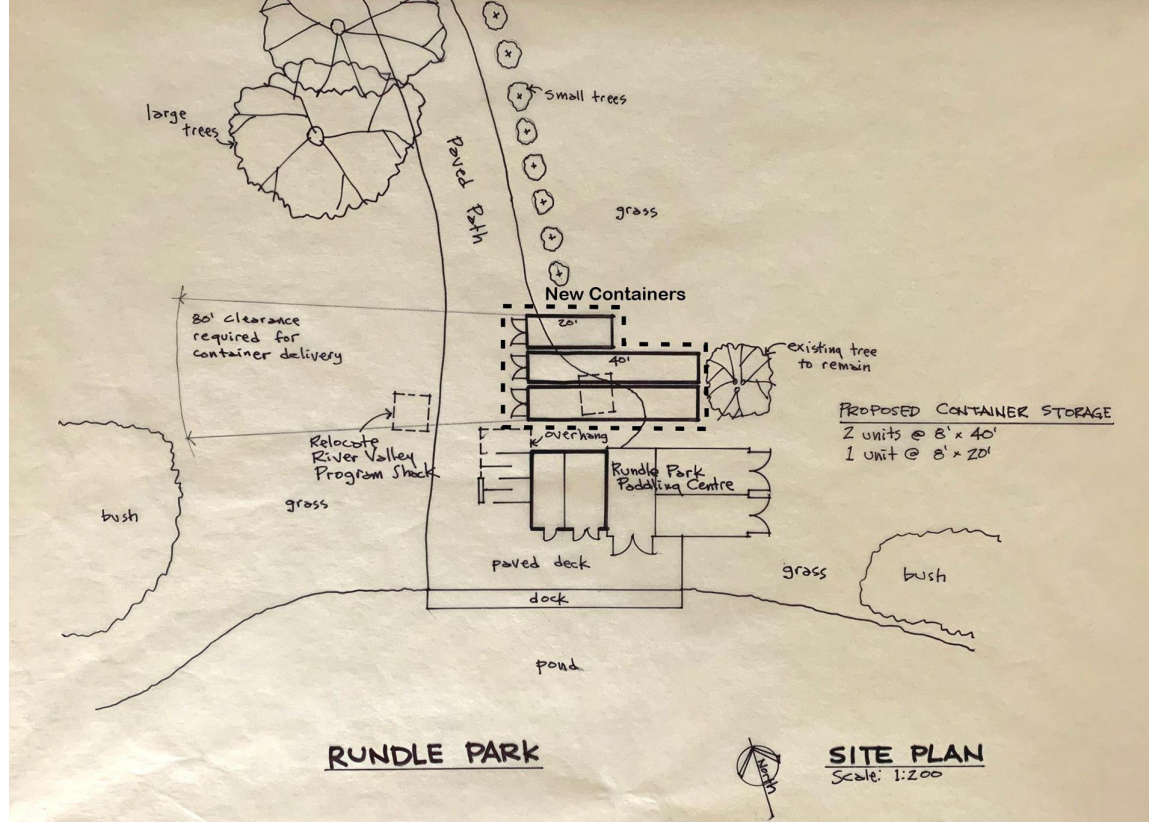
- LEGEND**
- Capital Region River Valley Park
  - Current RVA Initiatives
  - Existing Trails
  - New Trails
  - Future Trails
  - Existing Bridges
  - New Bridges
  - Future Bridges



# 2018-2022 Phase 2 Capital Plan







Edmonton Paddle Centre Association plans for Rundle Park and Paddling Centre storage of boats

**PADDLING CENTRE**

*Edmonton  
Paddling  
Centres  
Association*



*Edmonton Whitewater Paddlers*





ACT Centre

Rundle Park Rd NW

Rundle Park Vergant public park with lakes & fields

Rundle Family Centre

Rundle Mini Golf & Paddle Boat

along trail in to RPPC

trail junction

NW bldg corner

Rundle Park Paddling Centre

E end of boat storage

Sign Locations

Advisement Signs for  
EPCA Storage Project  
in Rundle Park  
Sept. 17 to Oct. 6, 2020





New Containers

4 containers @ 40' each

clear area around containers

240m<sup>2</sup> vegetation clear cut

existing fence

EWP building

New Fence

move gate & fence

add security gate in front of OTD

to field

3 trailers

to river

open area

forest area

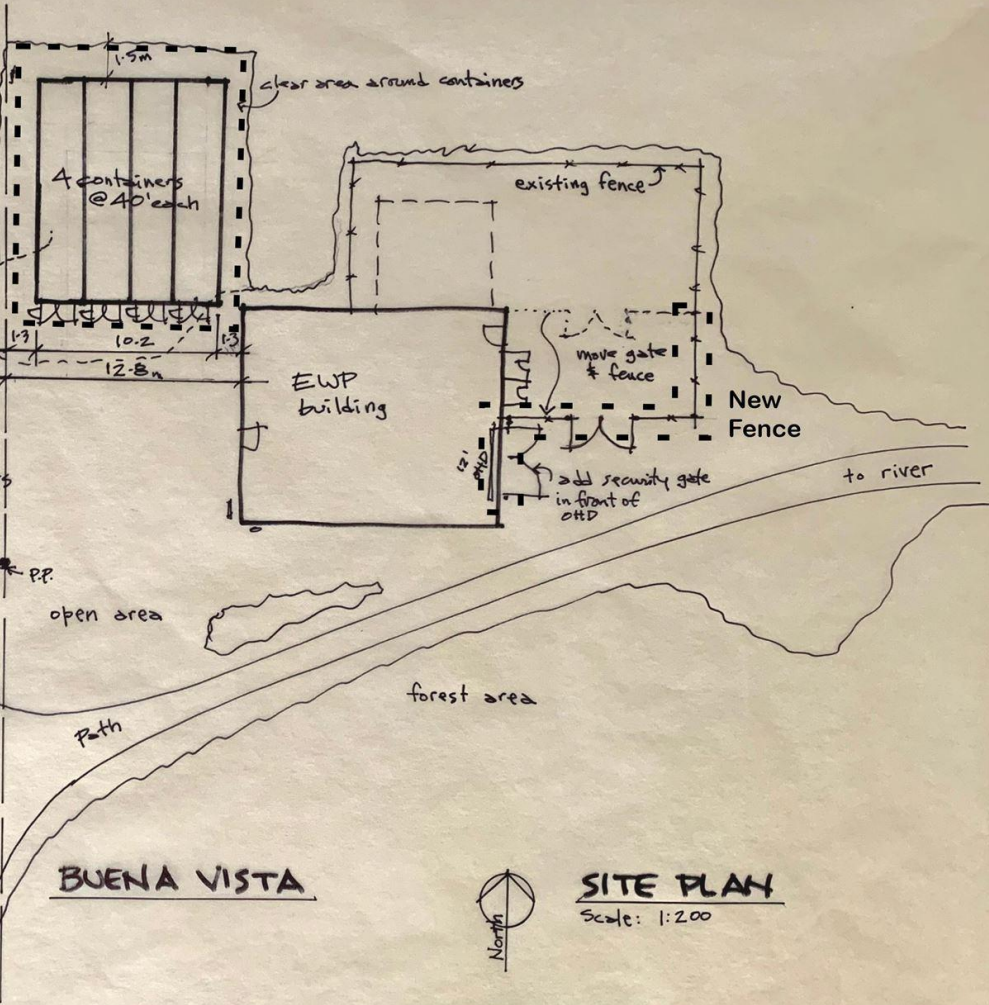
Path

BUENA VISTA



SITE PLAN

Scale: 1:200





***United  
Albertan  
Paddling  
Society***

***Ceyana  
Canoe  
Club***

***Ceyana  
Canoe  
Club***

***Northwest  
Voyagers  
Canoe &  
Kayak  
Club***

EDMONTON  
PADDLERS



EWB Storage site at Buena Vista Park



# Acknowledgements

Ceyana Canoe Club in Edmonton

United Albertan Paddling Society

City of Edmonton

City of Edmonton Archives

Keepers of the Water

North Saskatchewan River Keepers









Local artist Richard Dixon with permission



**We are a River city**









pictures from Lake Superior waterways  
Ontario

# Grab Bars for all abilities and mobility issues

***EZ Launch***  
FOR  
***KAYAKS & CANOES***

**ACCESSIBLE TRANSFER SYSTEM**

**Transfer/Sit On**

**Slide Over**

**Pull Out Correct Height**

**Lower Into**

**Launch/Pull Off**

**Re-Enter/Pull On**

**Canoe Height**

**Kayak Height**

**1-800-654-8168**

**ez DOCK®**

**www.ez-dock.com**







FIGURE 6



 **INTERNATIONAL ORANGE**  
**ORANGE INTERNATIONAL**

International signage  
for safety and  
restrictions for  
boaters CSA 2001  
Recommend signage.

Canada Shipping Act CSA 2001

## Current River Access and Storage Inventory

Park Name	Amenity Type	Description
Terwillegar Park	Hand launch	An informal hand launch exists on the north shore of Terwillegar Park and is shared with an informal dog beach where dogs from the off leash area enter the river.
Fort Edmonton Park	Hand launch	An informal hand launch location exists under the Quesnell bridge near Fort Edmonton Park. Access is via a steep gravel path.
Whitemud Park	Dock, hand launch	A new, seasonal dock was installed in Whitemud Park in 2018, as part of the River Valley Alliance boat docks and launches project. The existing hand launch remains.
Sir Wilfrid Laurier Park	Vehicle launch, dock, hand launch	A new, seasonal dock was installed in the Park in 2018, as part of the River Valley Alliance boat docks and launches project and the hand launch was also improved.
Buena Vista Park	Dock, hand launch, storage	The Edmonton Rowing Club has two boathouses and a dock that they maintain under agreements with the City. The White Water Paddlers have a storage location and maintain a river access point under a lease agreement with the City.
William Hawrelak Park	Dock	A new, seasonal dock was installed in William Hawrelak Park in 2018, as part of the River Valley Alliance boat docks and launches project.
Emily Murphy Park	Hand launch, dock	A hand launch exists in Emily Murphy Park. A new seasonal dock will be installed as part of the River Valley Alliance boat docks and launches project following the completion of the Groat Bridge





		rehabilitation project.
Louise McKinney Riverfront Park	Dock	A seasonal dock is in place at Louise McKinney Riverfront Park.
Henrietta Muir Edwards Park	Hand launch, dock, storage	The Edmonton Dragon Boat Festival Association maintains a storage trailer and seasonal dock at Rafter's Landing under a license agreement with the City. The Edmonton Riverboat docks at Rafter's Landing and hand launch opportunities are also accommodated at this location.
Dawson Park	Hand launch, dock, Storage	A hand launch exists at Dawson Park, and a new, seasonal dock was installed in 2018, as part of the River Valley Alliance boat docks and launches project. The Edmonton Dragon Boat Racing Club also maintains a dock upstream, and leases a storage and operations space from the City just outside the park boundary.
Capilano Park (50 Street)	Vehicle launch, dock, hand launch	A new, seasonal dock was installed in 2018, as part of the River Valley Alliance boat docks and launches project and the hand launch was also improved.
Rundle Park	Storage	The White Water Paddlers have a temporary storage trailer that is managed under a license agreement with the City. The Edmonton Paddling Centre Association operates the Rundle Paddle Centre which provides programming on the paddling pond in the park. The paddle centre also accommodates some boat storage on-site.
Hermitage Park	Storage	The City stores boats in an outdoor, fenced compound to support program activities on the pond.

# Fisheries Act Alberta fines and regulations for boaters

<b>Legislation and Section</b>	<b>Description/ Particulars</b>	<b>Ticket Amount</b>
Fisheries (Alberta) Act 33.2(3)	Conveyance operator fail to stop/submit to inspection at inspection station	\$310
Fisheries (Ministerial) Regulation 6.1	Transport watercraft on highway by means of conveyance with drainage hole/bilge blocked with a plug	\$172



# Water is essential for environmental health

CLEAN WATER IS A FUNDAMENTAL  
HUMAN RIGHT  
AND IS ESSENTIAL FOR  
ENVIRONMENTAL, COMMUNITY AND  
HUMAN HEALTH.  
AS STEWARDS OF THE MANY DIVERSE  
AND SIGNIFICANT TRIBUTARIES OF OUR  
GREAT ARCTIC OCEAN  
DRAINAGE BASIN,  
WE ACKNOWLEDGE WATER IS  
**SACRED.**





[Capital Region Plan](#) and [Phase 2 projects](#) River Valley Alliance



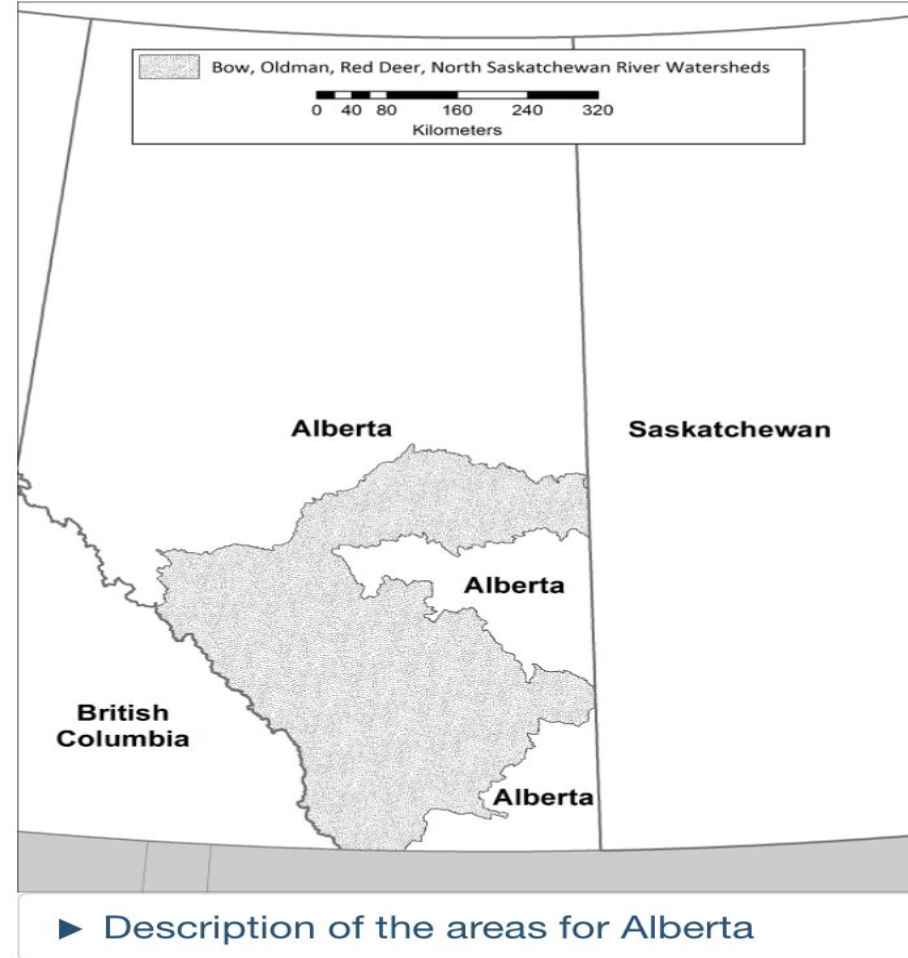


# Whirling Disease

The Clean, Drain and Dry  
All gear protocol

[Alberta Environment and Parks](#)

Alberta – map of the declared areas for finfish diseases.



# Alberta Aquatic Invasive Species K9 Program

...tense undertaking. Zebras and quagga mussels quickly wreak havoc once introduced to everybody. Fortunately, the Alberta Aquatic Invasive Species K-9 Program is ready to sniff out enemy and keep our water clean.

...ive mussels were introduced to ...ian waters in the 1980s. Out of water ...ive 30 days. Once introduced, they ...ly colonize and devastate biodiversity, ...: species, infrastructure, and recreational ...tunities. The Alberta government ...ates a cost of over \$75 million annually ...tle a mussel infestation.

...15, Alberta launched the first canine ...craft inspection program of its kind ...nada. With funding from the Alberta ...tion Districts, Hilo, Seuss, and Diesel ...ne full-time, furry ambassadors of ...tion, complete with "You've Been ...d" reflector cards.

...ite: Hilo, super close-up Below: Seuss at work

"This program is a shining example of partnership of stakeholders and government working together," says Cindy Sawchuk, Lead Aquatic Invasive Species Operations and K-9 Program, with Alberta Environment and Parks. "They funded it, but then have let us find the best way to make the program work."

Hilo, Seuss, and Diesel were sourced and trained through the Montana-based Working Dogs For Conservation, who train dogs for different programs worldwide. Rescue dogs are selected for particular character criteria.

"It's not about breed, but about strong interest in toys," notes Aimee Hurt, Co-Founder and

Director of Working Dogs For Conservation. "A desire to do the searching and good nerve strength for new places and sounds is important. Then we match dogs to handlers."

Sawchuk emphasizes correct match is important "because most rescue dogs come with some challenges the handlers have to work with." Dogs stay with the handlers 24 to bond effectively.

Part of training the dogs involves evaluating the dog wants the job. "It starts out fun, then we see if they are in it for the long haul," adds Aimee Hurt. "Prey drive can be a big distraction and can take a dog out of the running."



