

Bylaw 19468

Closure of Vehicular Access to Titled Parcels for the
Yellowhead Trail Freeway Conversion Program

WHEREAS the Municipal Council of the City of Edmonton may pass a Bylaw pursuant to Section 28 of the *Highways Development and Protection Act*, S.A. 2004, c. H-8.5 for the purpose of removing any access to a controlled street; and

WHEREAS City Council has considered the proposed closing and has agreed that it is in the public interest to pass this Bylaw;

NOW THEREFORE the Municipal Council of the City of Edmonton, duly assembled, enacts as follows:

1. All means of access to or from a controlled street generally as illustrated on the attached Schedules "A1" to "A15", are hereby closed.
2. This bylaw comes into force on April 1, 2021.

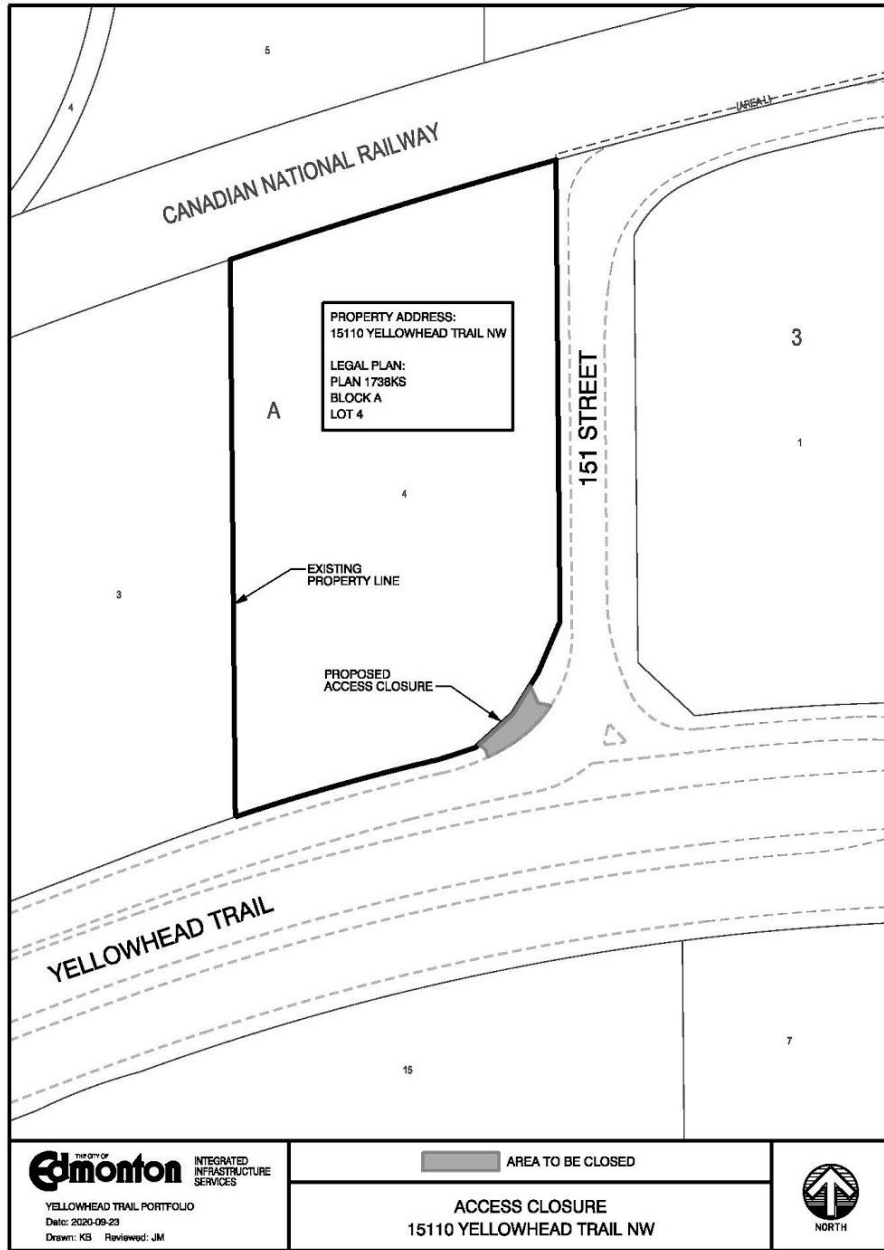
READ a first time this	_____	day of _____	,A.D. 2021;
READ a second time this	_____	day of _____	,A.D. 2021;
READ a third time this	_____	day of _____	,A.D. 2021;
SIGNED and PASSED this	_____	day of _____	,A.D. 2021.

THE CITY OF EDMONTON

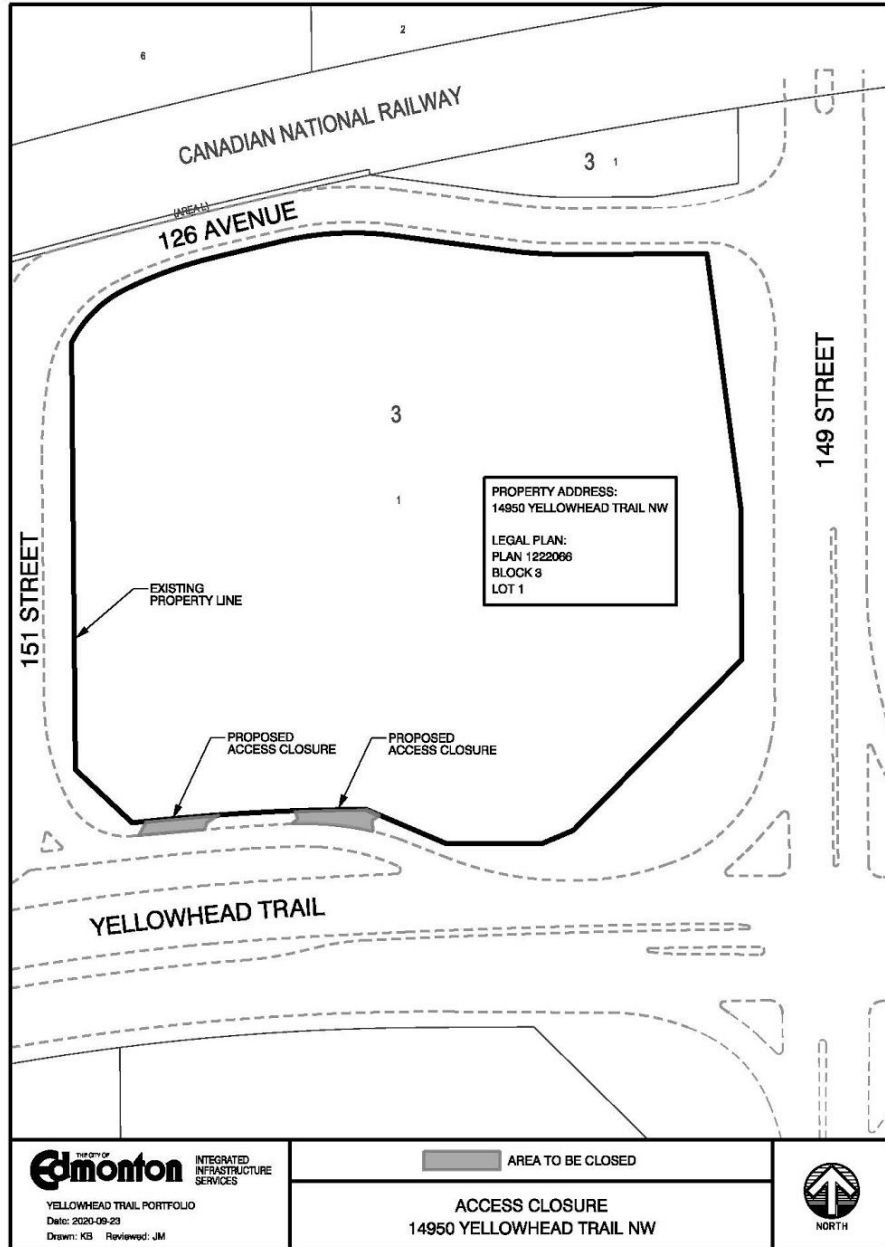
MAYOR

CITY CLERK

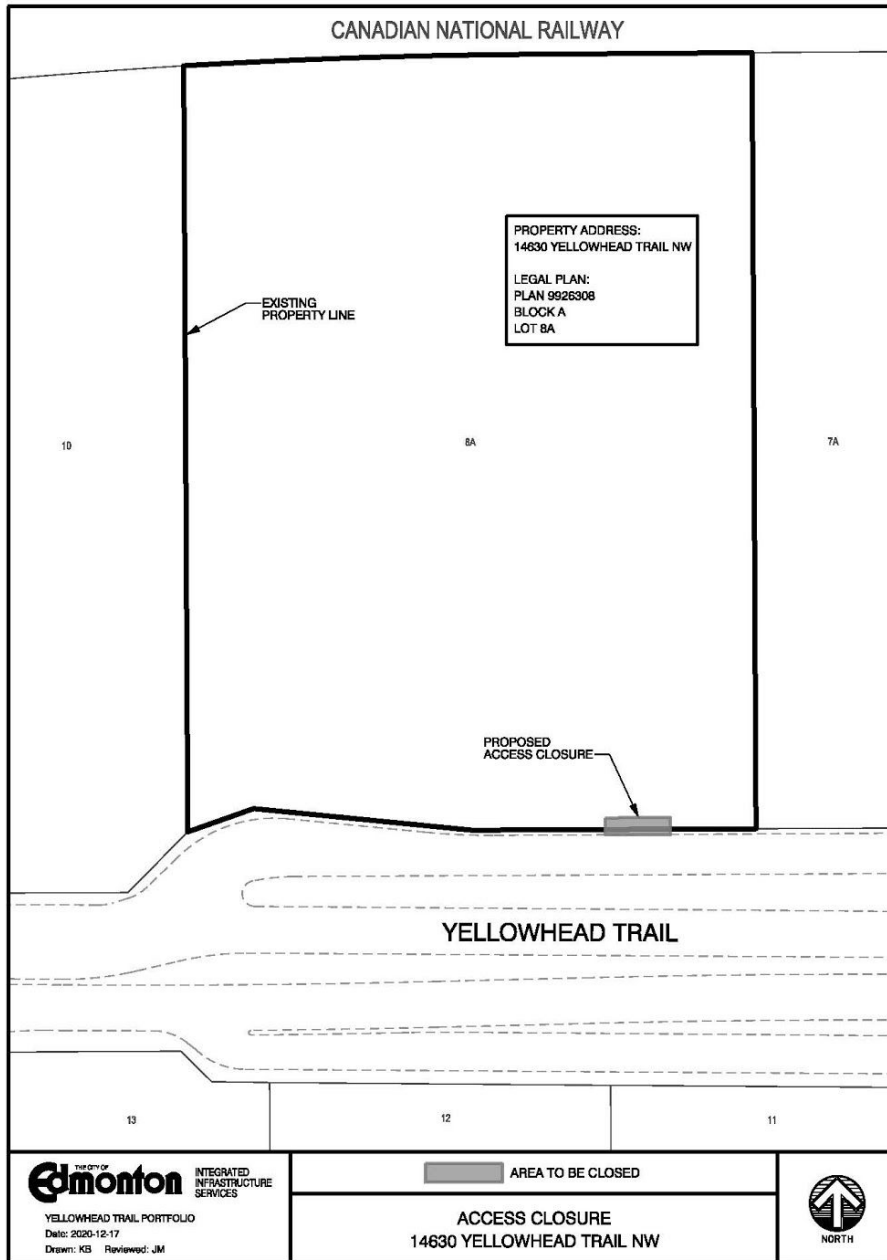
SCHEDULE "A1" TO BYLAW 19468



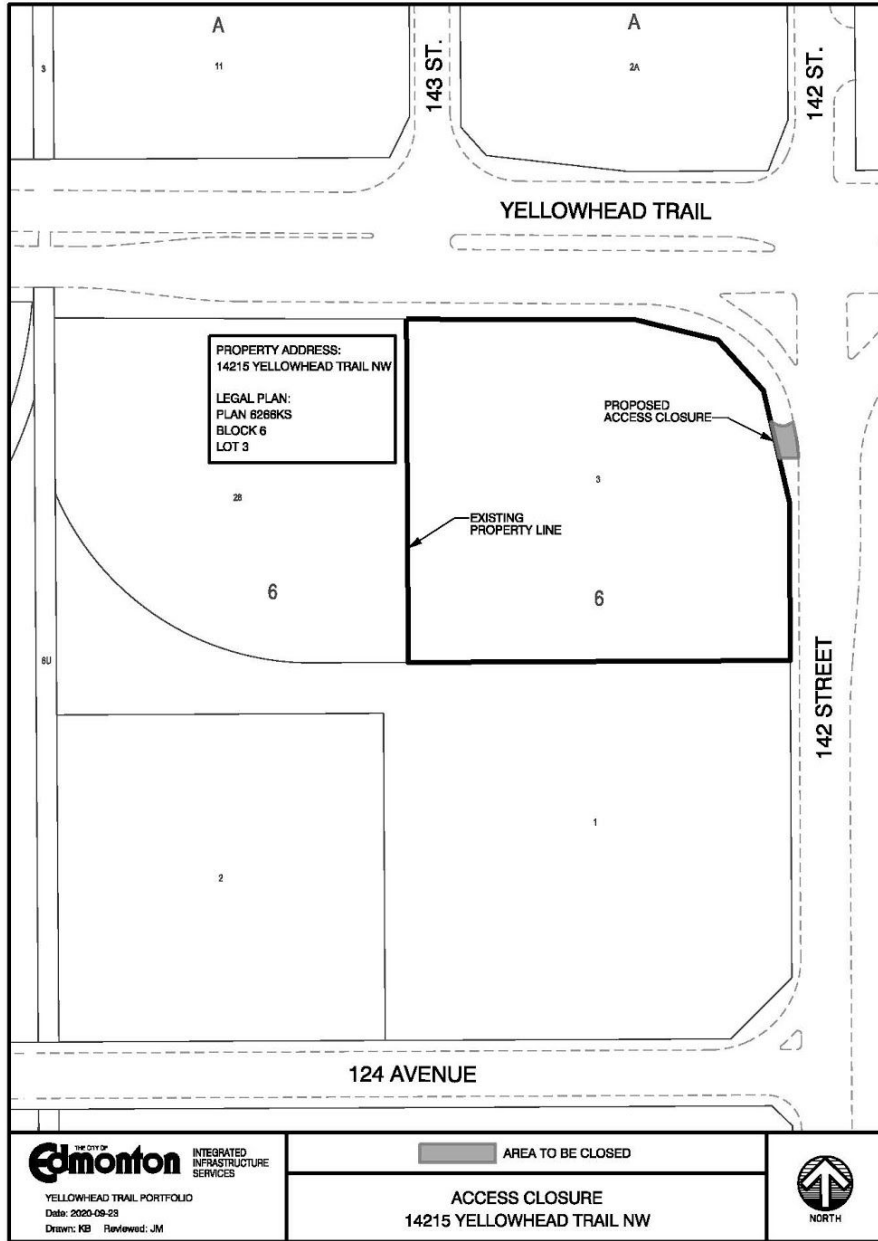
SCHEDULE "A2" TO BYLAW 19468



SCHEDULE "A3" TO BYLAW 19468



SCHEDULE "A4" TO BYLAW 19468



THE CITY OF
Edmonton INTEGRATED
INFRASTRUCTURE
SERVICES

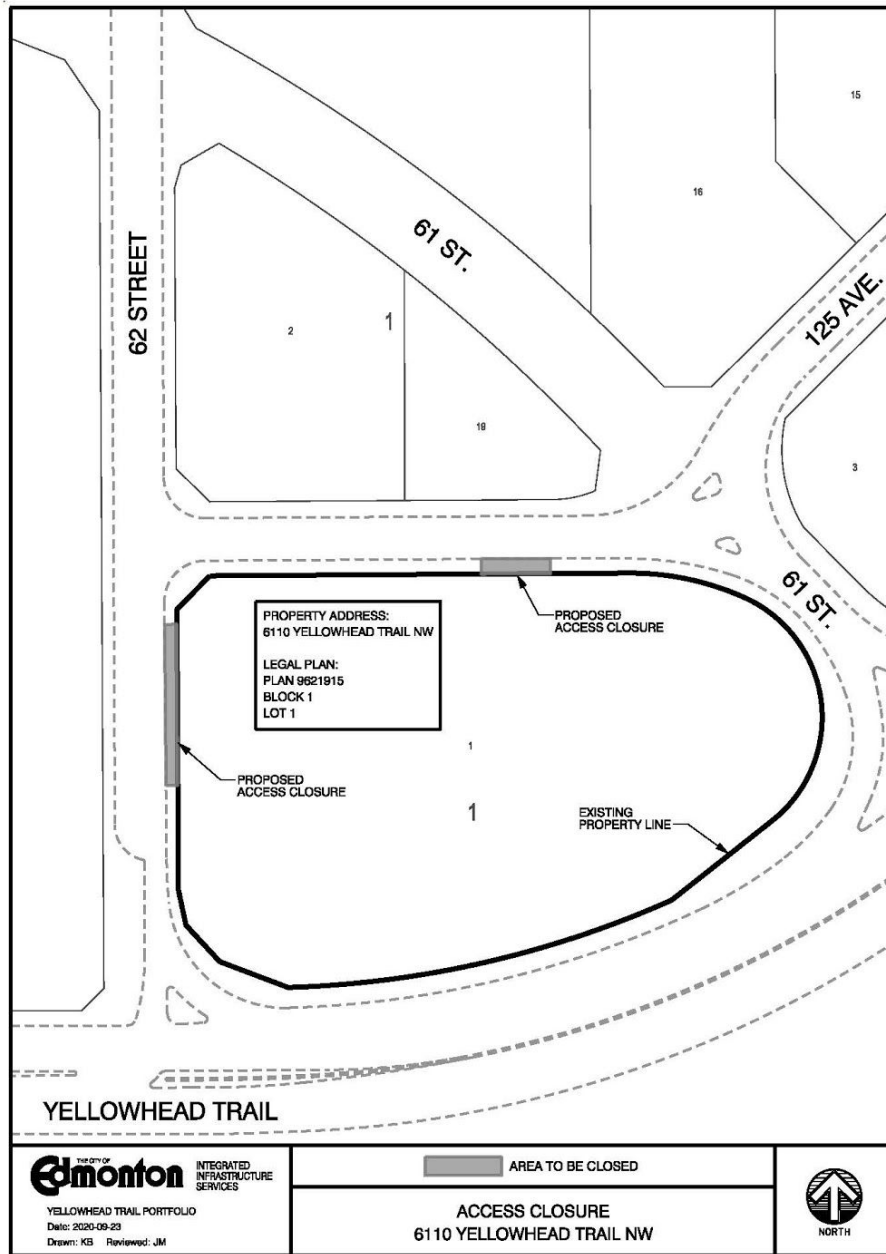
YELLOWHEAD TRAIL PORTFOLIO
Date: 2020-09-23
Drawn: KB Reviewed: JM

AREA TO BE CLOSED

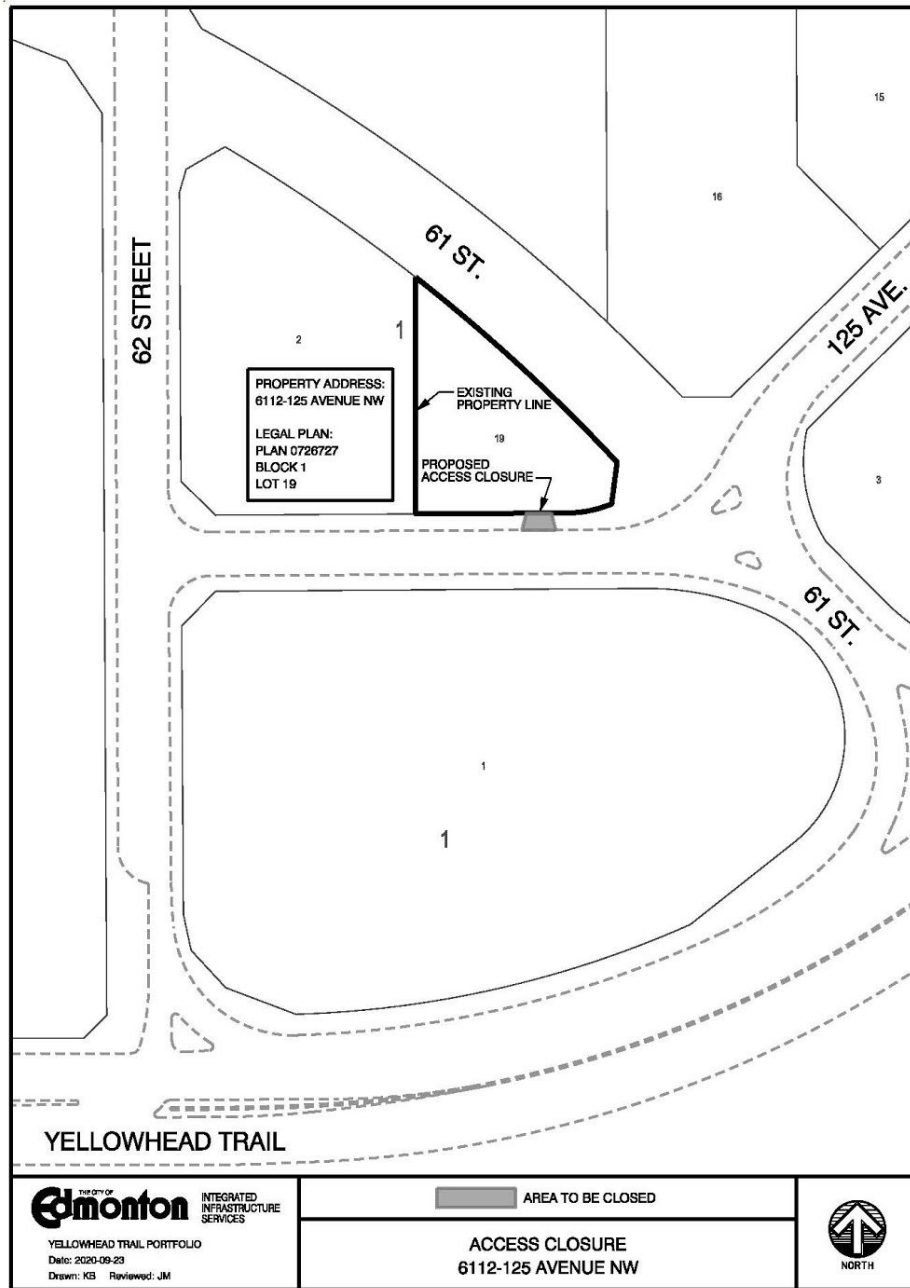
ACCESS CLOSURE
14215 YELLOWHEAD TRAIL NW



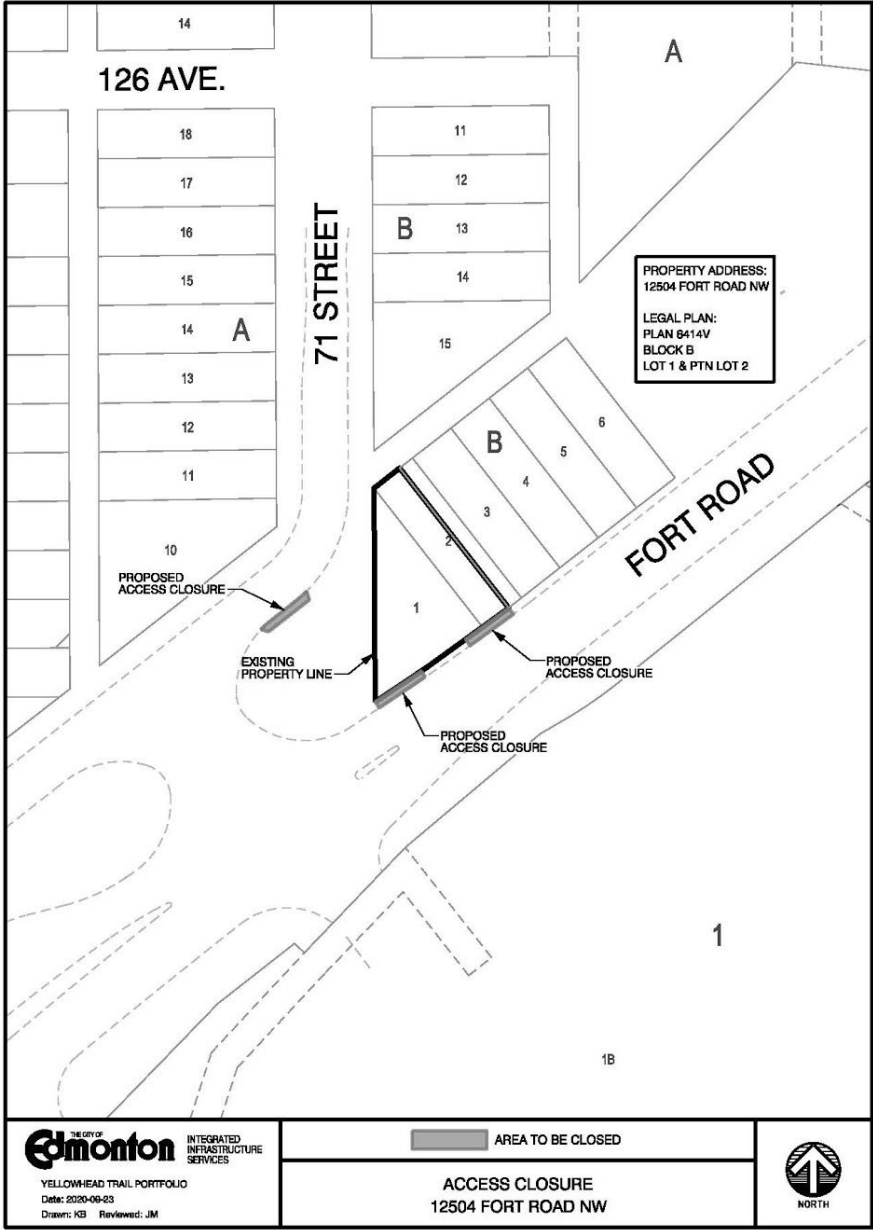
SCHEDULE "A5" TO BYLAW 19468



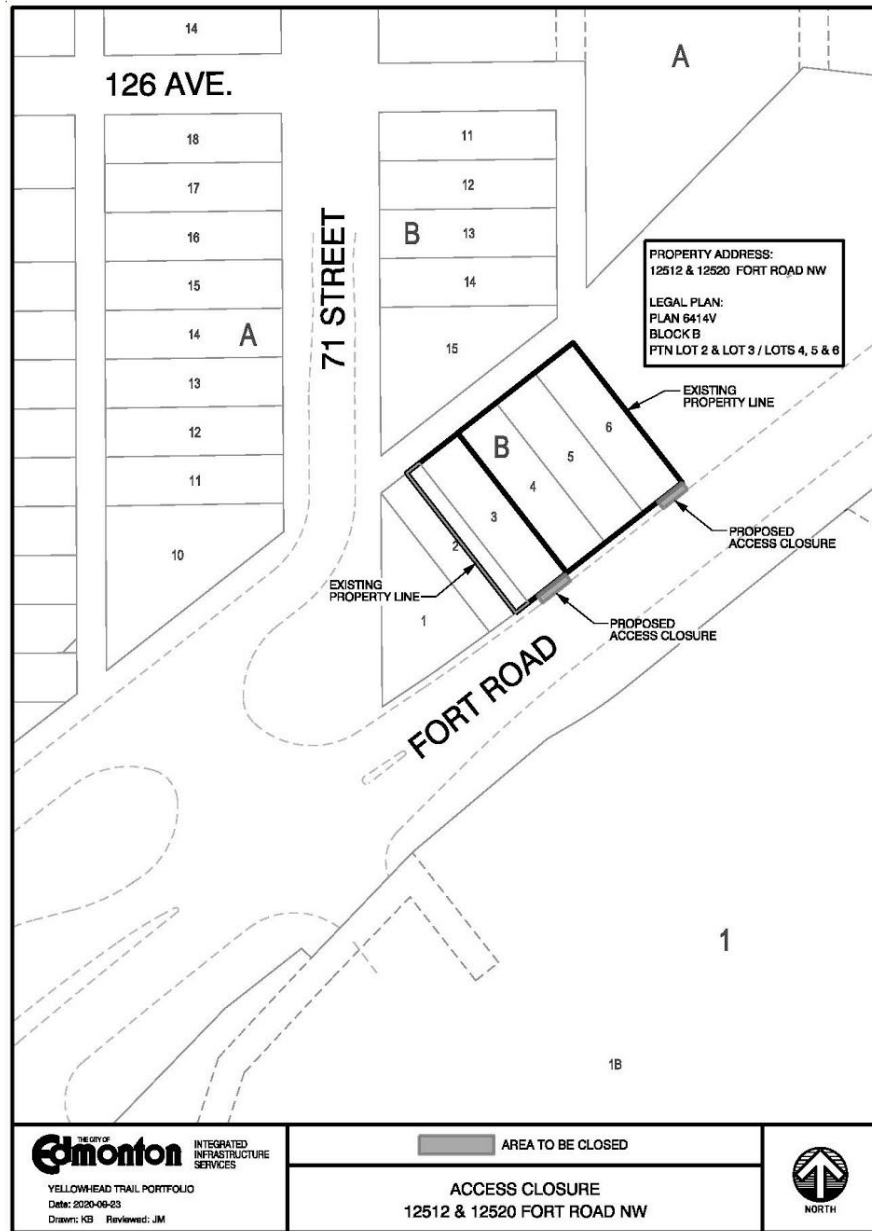
SCHEDULE "A6" TO BYLAW 19468



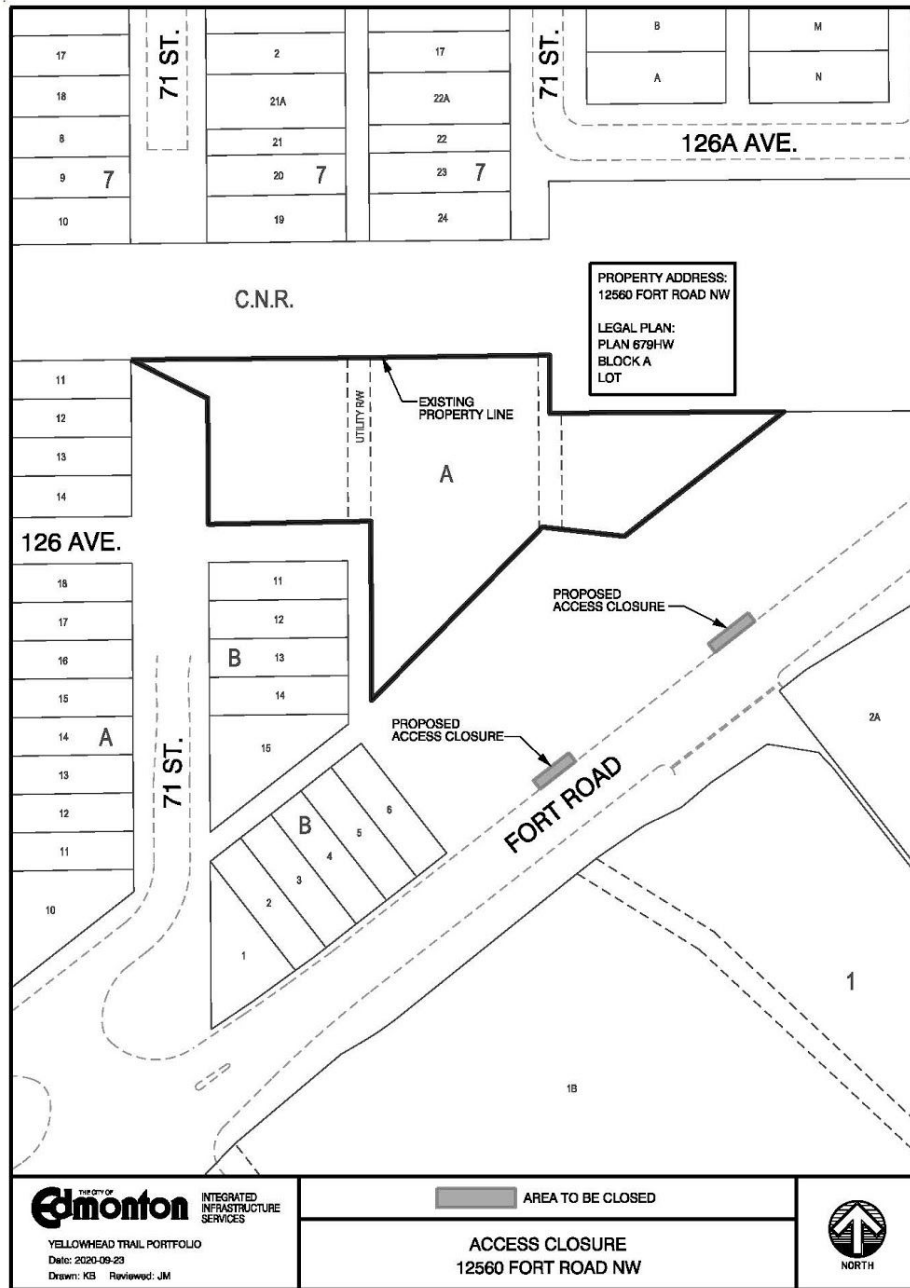
SCHEDULE "A7" TO BYLAW 19468



SCHEDULE "A8" TO BYLAW 19468



SCHEDULE "A9" TO BYLAW 19468

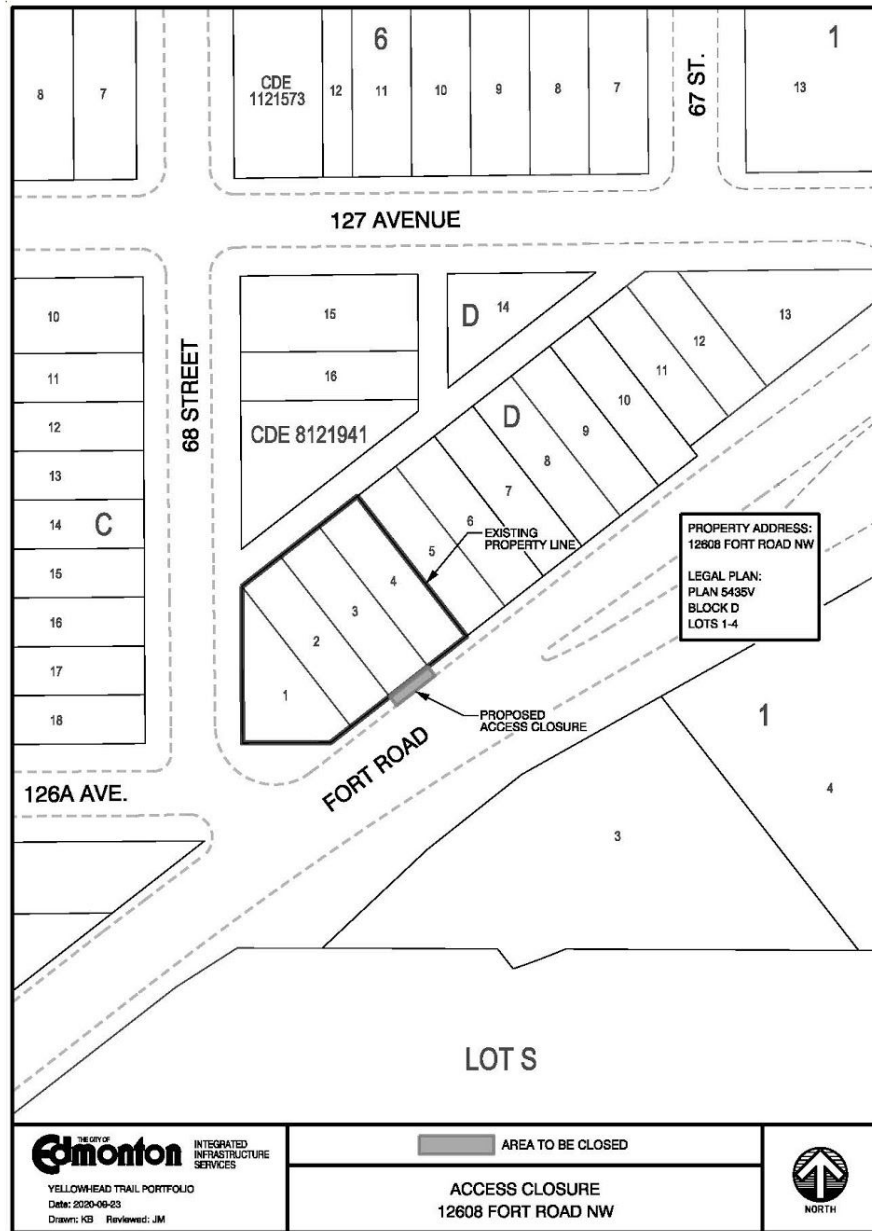


City of Edmonton
 INTEGRATED INFRASTRUCTURE SERVICES
 YELLOWHEAD TRAIL PORTFOLIO
 Date: 2020-09-23
 Drawn: KB Reviewed: JM

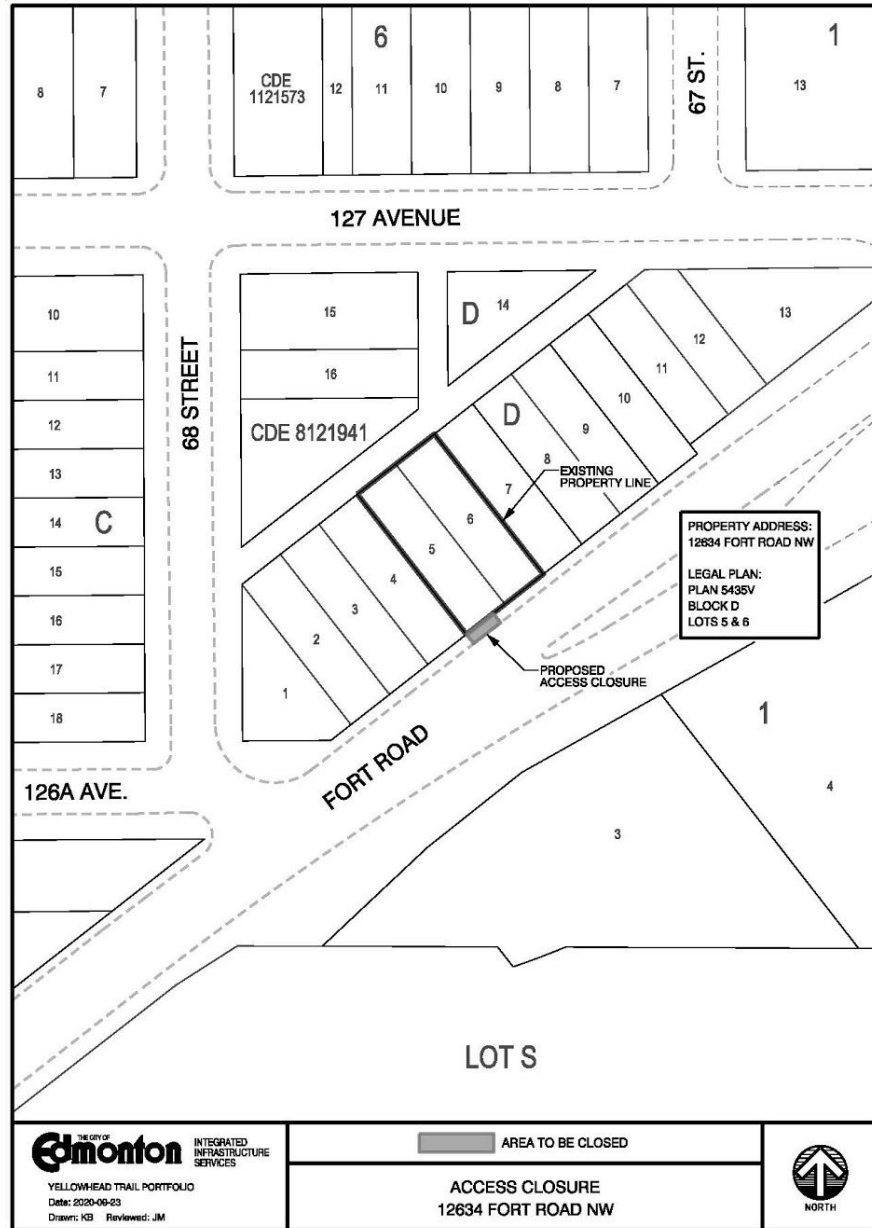
AREA TO BE CLOSED
 ACCESS CLOSURE
 12560 FORT ROAD NW




SCHEDULE "A10" TO BYLAW 19468



SCHEDULE "A11" TO BYLAW 19468

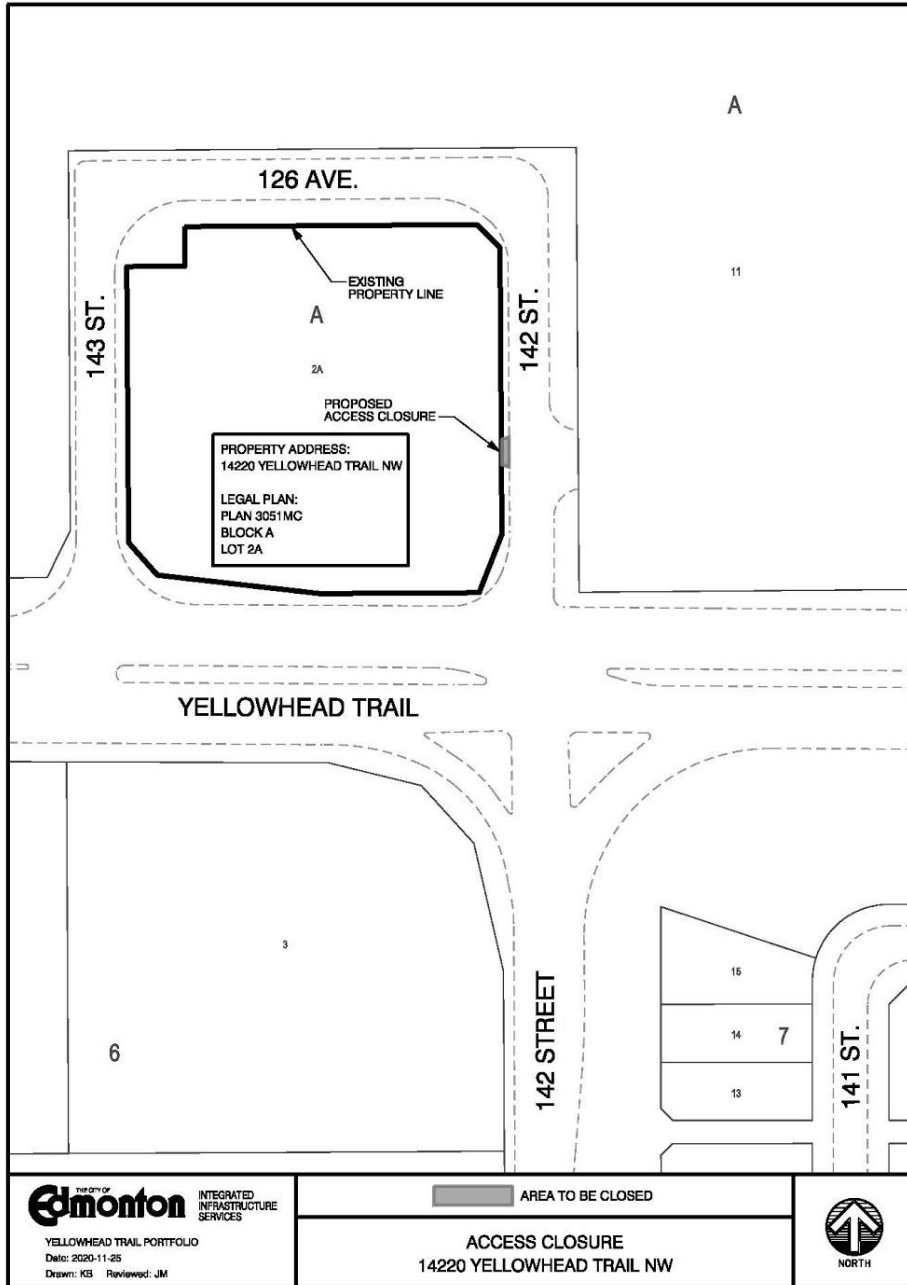



THE CITY OF
Edmonton
 INTEGRATED
 INFRASTRUCTURE
 SERVICES
 YELLOWHEAD TRAIL PORTFOLIO
 Date: 2020-09-23
 Drawn: KB Reviewed: JM

 AREA TO BE CLOSED
 ACCESS CLOSURE
 12634 FORT ROAD NW



SCHEDULE "A12" TO BYLAW 19468

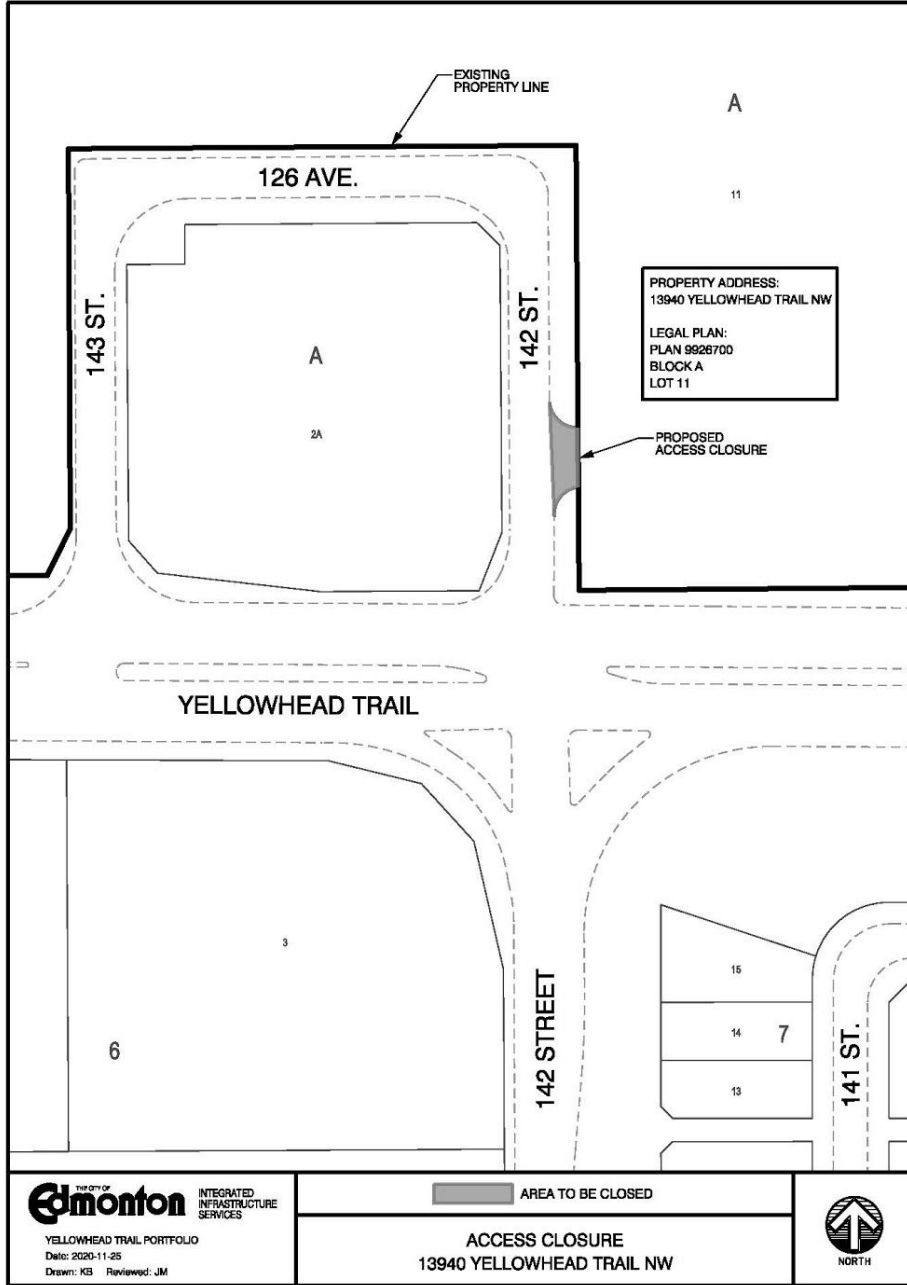


City of Edmonton INTEGRATED INFRASTRUCTURE SERVICES
YELLOWHEAD TRAIL PORTFOLIO
Date: 2020-11-25
Drawn: KB Reviewed: JM

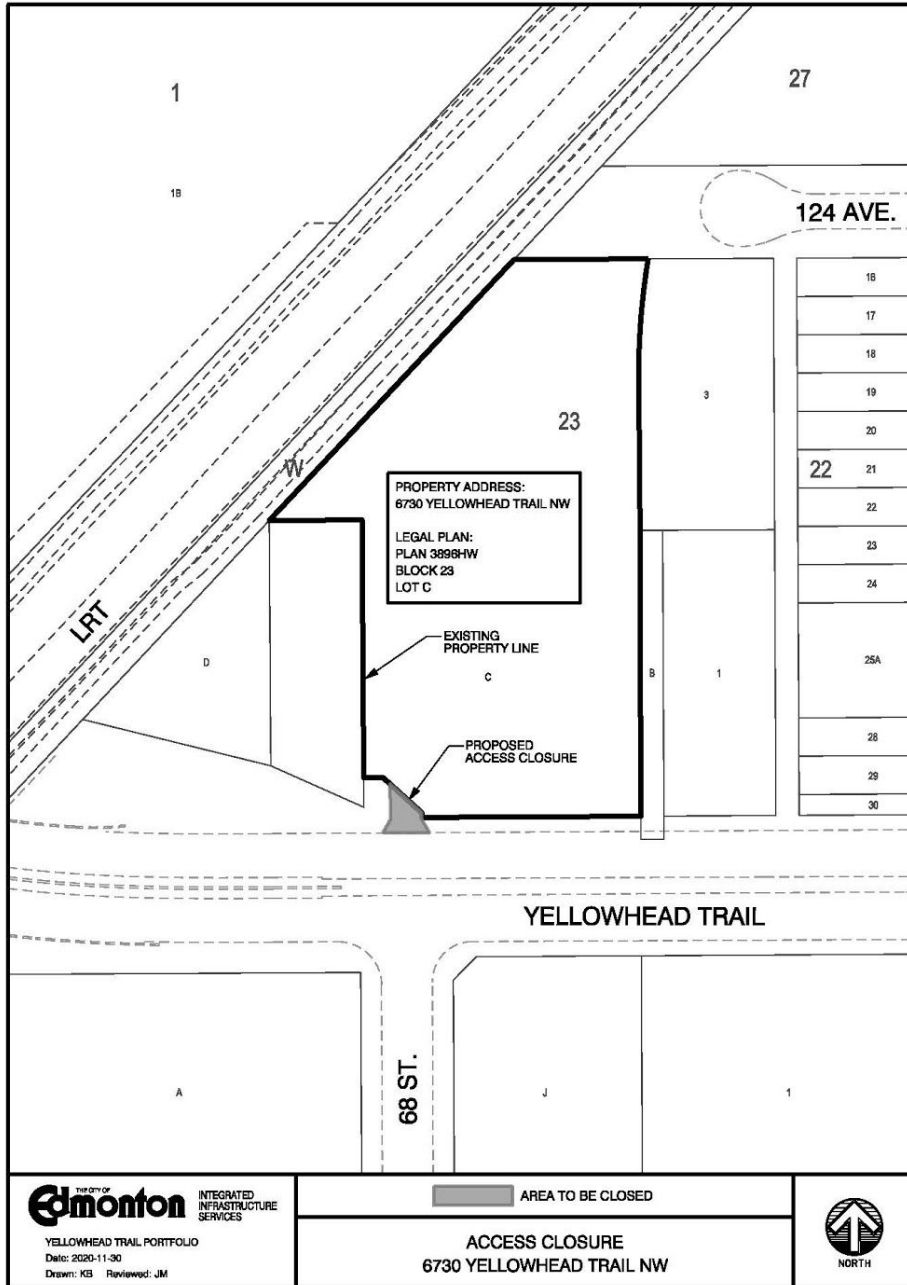
AREA TO BE CLOSED
ACCESS CLOSURE
14220 YELLOWHEAD TRAIL NW



SCHEDULE "A13" TO BYLAW 19468



SCHEDULE "A14" TO BYLAW 19468



SCHEDULE "A15" TO BYLAW 19468

