

KEY PLAN
SCALE: N.T.S.

CR_6996 ATTACHMENT 3



1 SITE #1 OVERALL PLAN
SCALE: 1:1000



Stantec Consulting Ltd.
10160 - 112 Street
Edmonton AB Canada
Tel. 780.917.7000
www.stantec.com

Copyright Reserved
The Contractor shall verify and be responsible for all dimensions. DO NOT scale the drawing - any errors or omissions shall be reported to Stantec without delay. The Copyrights to all designs and drawings are the property of Stantec. Reproduction or use for any purpose other than that authorized by Stantec is forbidden.

- Legend
- EXISTING GRANULAR TRAIL
 - LIMIT OF CONSTRUCTION
- DETAIL REFERENCE SYMBOL
- 1 L001-001 DETAIL NUMBER SHEET NUMBER

- Notes
- UTILITY SETBACKS**
LANDSCAPE CONTRACTOR TO CALL 'ALBERTA ONE-CALL' AT 1-800-242-3447 TO HAVE ALL EXISTING SITE UTILITIES LOCATED PRIOR TO CONSTRUCTION AND PLANT NO CLOSER THAN THE FOLLOWING DIMENSIONS FROM THE SERVICES:
1. 1.0 m FROM POWER LINES
 2. 3.5 m FROM ALL POWER HARDWARE
 3. 1.8 m FROM WATER MAINS, WATER VALVES, MANUAL AIRVENTS, AND SERVICES
 4. 2.0 m FROM SEWER MAINS, AND MANHOLES
 5. 1.8 m FROM SEWER SERVICES
 6. 1.5 m FROM GAS (NO TREES WITHIN EASEMENT)
 7. 7.5 m FROM STREET CORNERS.
 8. 3.5 m FROM FIRE HYDRANTS.
 9. 1.5 m FROM DRIVEWAYS
 10. 1.5 m FROM ALLEY ACCESSES
 11. 1.0 m FROM SIDEWALKS
 - OR AS PER APPROVED ENG. CROSS SECTIONS
 12. 3.5 m FROM TRANSIT ZONES
 13. 3.0 m FROM PRIVATE PROPERTY BOUNDARY
 14. 1.25 m FROM COLLECTOR ROAD CURB FACE
 15. 1.25 m FROM LOCAL ROAD CURB FACE
 16. 2.0 m FROM ARTERIAL ROAD CURB FACE
 17. 3.5 m FROM YIELD AND STOP SIGNS
 18. 3.5 m FROM BUS STOP SIGNS
 19. 2.0 m FROM ALL OTHER SIGNS
 20. 1.0 m FROM OTHER UNDERGROUND UTILITIES
 21. 3.5 m FROM TELUS PEDESTALS
 22. 2.0 m FROM TELUS DUCT STRUCTURE
 23. 1.0 m FROM TELUS CABLE FACILITIES

LANDSCAPE CONTRACTOR IS RESPONSIBLE FOR DAMAGES AND LIABILITIES INCURRED BY DAMAGES TO SITE UTILITIES.

Development Engineer, Sustainable Development			
Approvals			YY.MM.DD
Revision	By	Appd.	YY.MM.DD
1. FIRST SUBMISSION (60%)	DW	NGS	18.05
Issued	By	Appd.	YY.MM
File Name: LA_M1Creek.dwg	DW	CB	NGS
	Dwn.	Chkd.	Dsgn.
			18.03.13
			YY.MM.DD

Permit-Seal

The Alberta Association of Landscape Architects

Natalie Goulet-Sorenson

Client/Project
CITY OF EDMONTON

MILL CREEK RAVINE PARK
TRAIL REHABILITATION
Edmonton, Alberta

Title
SITE #1 OVERALL PLAN

Project No. 1161106255
Scale 1:1000

Drawing No. L001-001



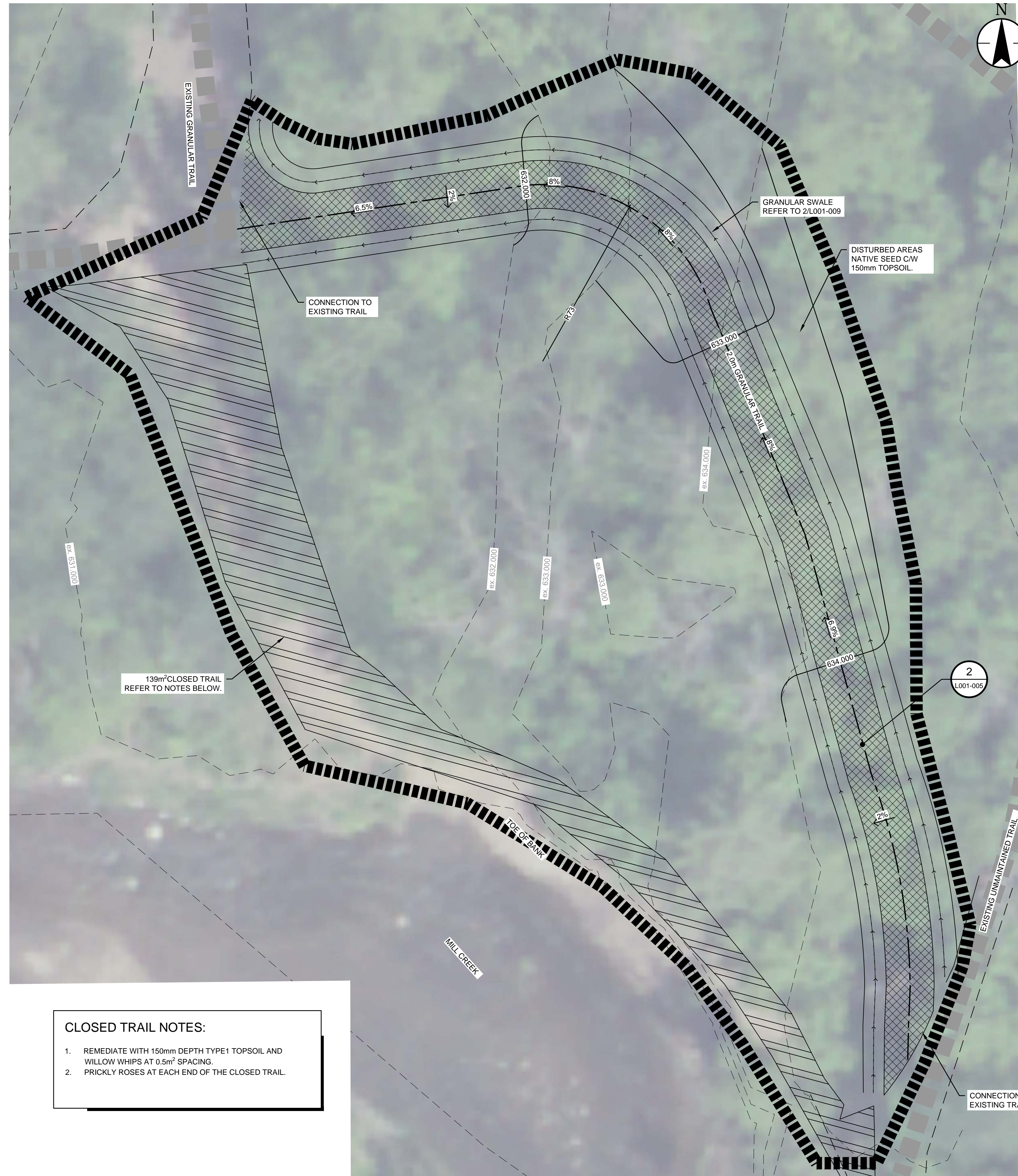
KEY PLAN
SCALE: N.T.S.

LAYOUT AND GRADING NOTES:

- CONTRACTOR TO CALL ALBERTA ONE CALL AT 1-800-242-3447 TO HAVE EXISTING UTILITIES LOCATED PRIOR TO START OF ANY CONSTRUCTION.
- THIS DRAWING IS TO BE READ IN CONJUNCTION WITH THE WRITTEN SPECIFICATIONS, DRAWINGS, AND DETAILS FOR THE PROJECT.
- CONTRACTOR TO ENSURE THAT ALL NECESSARY ARRANGEMENTS ARE MADE WITH THE PIPELINE COMPANIES CONCERNING THE MOVEMENT OF MATERIALS AND EQUIPMENT NEAR ANY PIPELINE RIGHTS OF WAY.
- CONTRACTOR IS RESPONSIBLE FOR THE HOARDING OF ALL TREES WITHIN OR ADJACENT TO CONSTRUCTION AREAS.
- CONTRACTOR IS RESPONSIBLE FOR THE ADJUSTMENT OF ALL EXISTING CATCHBASINS, CATCHBASIN MANHOLES, MANHOLES, WATER VALVES, HYDRANTS, ETC. TO MATCH PROPOSED GRADES.
- ENSURE POSITIVE DRAINAGE IN ALL SWALES AS SHOWN ON PLAN. DO NOT PERMIT POOLING OF WATER IN DRAINAGE SWALE.
- CONTRACTOR IS RESPONSIBLE FOR HAULING OF ALL EXCESS MATERIALS OFF THE SITE.
- CONTRACTOR IS RESPONSIBLE FOR GENERAL SITE CLEAN UP.
- CONTRACTOR IS RESPONSIBLE FOR ANY DAMAGE TO LANDSCAPED AREAS AND MUST MAKE ALL NECESSARY RESTORATIONS AND REPAIRS.
- ALL ANCILLARY WORK NORMALLY ASSOCIATED WITH THIS TYPE OF CONSTRUCTION SHALL BE DEEMED TO BE PART OF THE CONTRACT.
- ALL QUANTITIES ARE APPROXIMATE ONLY.
- GRADES TO BE APPROVED BY LANDSCAPE ARCHITECT PRIOR TO CONSTRUCTION STARTING.
- CONTRACTOR TO HOLD ROUGH GRADES 450 mm BELOW FINISHED GRADE FOR PLANT BEDS, 150mm FOR SEEDED AREAS, 200 mm FOR WALKS, 100 mm FOR SODDED AREAS.
- STANDARD CONTOUR INTERVAL IS 500mm. SPOT ELEVATIONS AS SHOWN. ALL SPOT ELEVATIONS IN METERS. BERMS AND SLOPES TO BE GRADED SMOOTHLY. ELIMINATE ROUGH SPOTS AND LOW AREAS TO ENSURE POSITIVE DRAINAGE PRIOR TO SEEDING.
- ALL PROPOSED GRADES TO MEET EXISTING GRADES AT PROPERTY LINE WITH A SMOOTH TRANSITION. LIMIT OF GRADING NOT TO EXTEND BEYOND PROPERTY LINE. GRADES TO MEET CURB OR WALK SMOOTHLY. LANDSCAPE ARCHITECT TO APPROVE ROUGH AND FINISHED GRADES.
- MAXIMUM SLOPE OF ANY LANDSCAPED AREA NOT TO EXCEED 33%.
- CONTRACTOR TO TAKE NECESSARY PRECAUTIONS TO PROTECT ALL SITE FEATURES EXISTING AT THE TIME OF CONSTRUCTION UNLESS SPECIFIED FOR DEMOLITION ON THE DRAWING. THIS INCLUDES ALL SURVEY BARS, STAKES OR MONUMENTS. MAKE GOOD ANY DAMAGE.
- ANY AMBIGUITY IN THIS DRAWING OR ACCOMPANYING DETAILS IS TO BE REPORTED TO THE LANDSCAPE ARCHITECT FOR DIRECTION. CONTRACTOR NOT TO PROCEED IN UNCERTAINTY.
- LIMITS OF WORK TO BE CLEARLY UNDERSTOOD BY THE CONTRACTOR PRIOR TO ANY WORK TAKING PLACE ON SITE. CONTRACTOR TO CONTACT LANDSCAPE ARCHITECT FOR CLARIFICATION IF REQUIRED.
- CONTRACTOR TO VISIT SITE TO CONFIRM ALL SITE CONDITIONS PRIOR TO SUBMITTING BIDS. DISCREPANCIES TO BE REPORTED TO LANDSCAPE ARCHITECT FOR CLARIFICATION.
- CONTRACTOR TO VERIFY ALL DIMENSIONS AND REPORT ANY DISCREPANCIES TO THE LANDSCAPE ARCHITECT.
- LAYOUT TO BE APPROVED BY LANDSCAPE ARCHITECT PRIOR TO CONSTRUCTION STARTING.
- ALL MEASUREMENTS ARE IN METERS UNLESS OTHERWISE NOTED.
- CONTRACTOR SHALL SUPPLY ALL MATERIALS IN QUANTITIES SUFFICIENT TO COMPLETE WORK SHOWN ON THESE DRAWINGS. ANY DISCREPANCIES SHALL BE REPORTED TO THE LANDSCAPE ARCHITECT FOR DIRECTION.
- NO SUBSTITUTIONS OF MATERIALS, PRODUCTS OR QUANTITIES WITHOUT PRIOR CONSENT OF LANDSCAPE ARCHITECT.

CLOSED TRAIL NOTES:

- REMEDiate WITH 150mm DEPTH TYPE 1 TOPSOIL AND WILLOW WHIPS AT 0.5m² SPACING.
- PRICKLY ROSES AT EACH END OF THE CLOSED TRAIL.



1 SITE #1 LAYOUT AND GRADING
SCALE: 1:100



Stantec Consulting Ltd.
10160 - 112 Street
Edmonton AB Canada
Tel. 780.917.7000
www.stantec.com

Copyright Reserved

The Contractor shall verify and be responsible for all dimensions. DO NOT scale the drawing - any errors or omissions shall be reported to Stantec without delay. The Copyrights to all designs and drawings are the property of Stantec. Reproduction or use for any purpose other than that authorized by Stantec is forbidden.

Legend

- EXISTING GRANULAR TRAIL
 - PROPOSED CONTOUR
 - EXISTING CONTOUR (MAJOR)
 - EXISTING CONTOUR (MINOR)
 - LIMIT OF CONSTRUCTION
- DETAIL REFERENCE SYMBOL
1 L001-001
DETAIL NUMBER
SHEET NUMBER

Notes
UTILITY SETBACKS

LANDSCAPE CONTRACTOR TO CALL 'ALBERTA ONE-CALL' AT 1-800-242-3447 TO HAVE ALL EXISTING SITE UTILITIES LOCATED PRIOR TO CONSTRUCTION AND PLANT NO CLOSER THAN THE FOLLOWING DIMENSIONS FROM THE SERVICES:

- 1.0 m FROM POWER LINES
- 3.5 m FROM ALL POWER HARDWARE
- 1.8 m FROM WATER MAINS, WATER VALVES, MANUAL AIRVENTS, AND SERVICES
- 2.0 m FROM SEWER MAINS, AND MANHOLES
- 1.8 m FROM SEWER SERVICES
- 1.5 m FROM GAS (NO TREES WITHIN EASEMENT)
- 7.5 m FROM STREET CORNERS.
- 3.5 m FROM FIRE HYDRANTS.
- 1.5 m FROM DRIVEWAYS
- 1.5 m FROM ALLEY ACCESSES
- 1.0 m FROM SIDEWALKS
- OR AS PER APPROVED ENG. CROSS SECTIONS
- 3.5 m FROM TRANSIT ZONES
- 3.0 m FROM PRIVATE PROPERTY BOUNDARY
- 1.25 m FROM COLLECTOR ROAD CURB FACE
- 1.25 m FROM LOCAL ROAD CURB FACE
- 2.0 m FROM ARTERIAL ROAD CURB FACE
- 3.5 m FROM YIELD AND STOP SIGNS
- 3.5 m FROM BUS STOP SIGNS
- 2.0 m FROM ALL OTHER SIGNS
- 1.0 m FROM OTHER UNDERGROUND UTILITIES
- 3.5 m FROM TELUS PEDESTALS
- 2.0 m FROM TELUS DUCT STRUCTURE
- 1.0 m FROM TELUS CABLE FACILITIES

LANDSCAPE CONTRACTOR IS RESPONSIBLE FOR DAMAGES AND LIABILITIES INCURRED BY DAMAGES TO SITE UTILITIES.

Development Engineer, Sustainable Development			
Approvals			YY.MM.DD
Revision	By	Appd.	YY.MM.DD
1. FIRST SUBMISSION (60%)	DW	NGS	18.05
Issued	By	Appd.	YY.MM
File Name: LA_MMCreek.dwg	DW	CB	NGS
	Dwn.	Chkd.	Dsgn.
			18.03.13
			YY.MM.DD

Permit-Seal



Natalie
Goulet-Sorenson

Client/Project

CITY OF EDMONTON

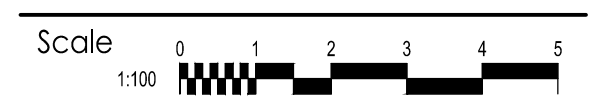
MILL CREEK RAVINE PARK
TRAIL REHABILITATION

Edmonton, Alberta

Title

SITE #1 LAYOUT AND GRADING

Project No.
1161106255



V:\161\active\1161106255\drawing\Landscape\LA_MMCreek.dwg

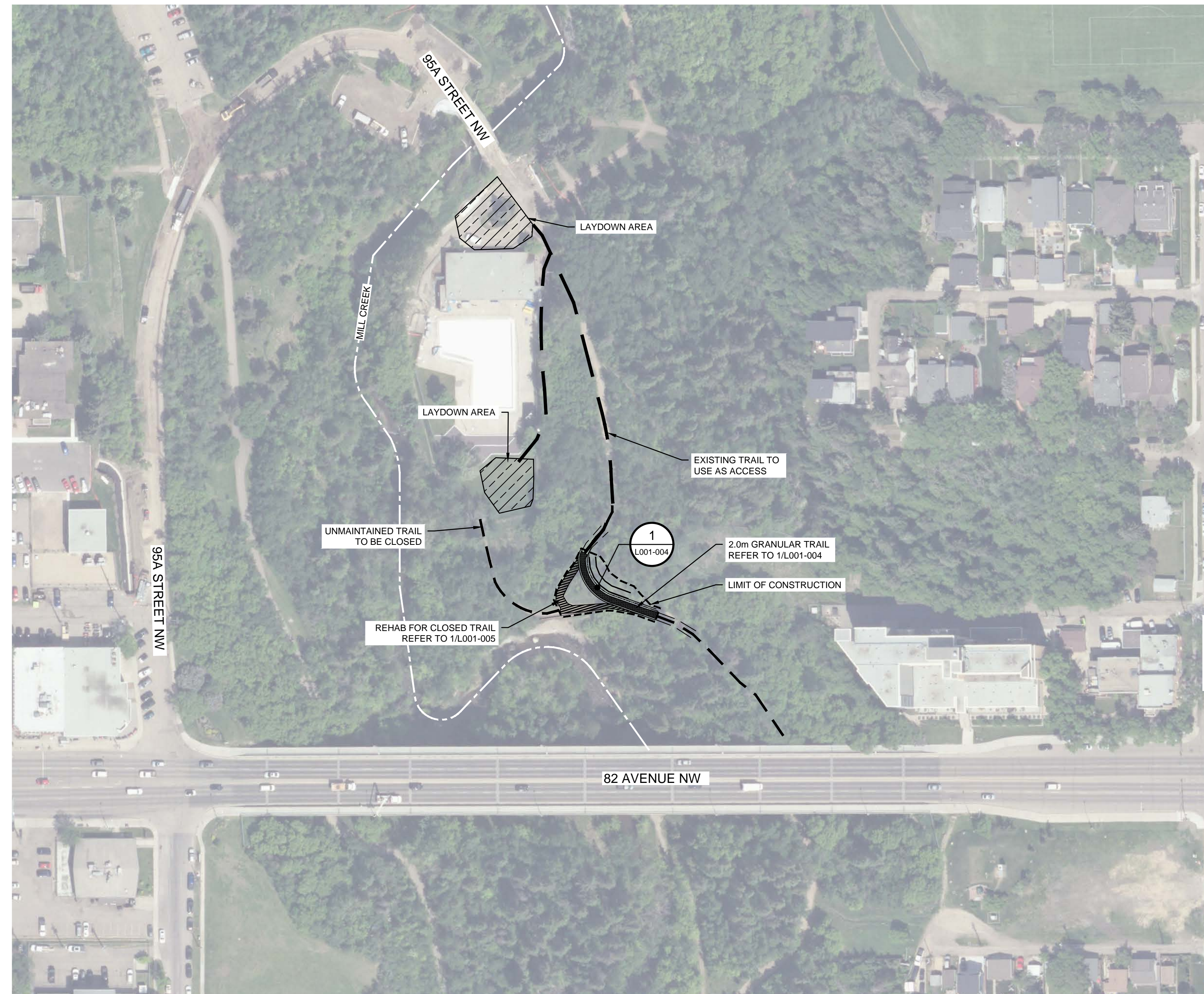
Drawing No.

2019-3-18 2:02pm BY: DWIGLAWORTH

2 of 10 L001-002



KEY PLAN
SCALE: N.T.S.



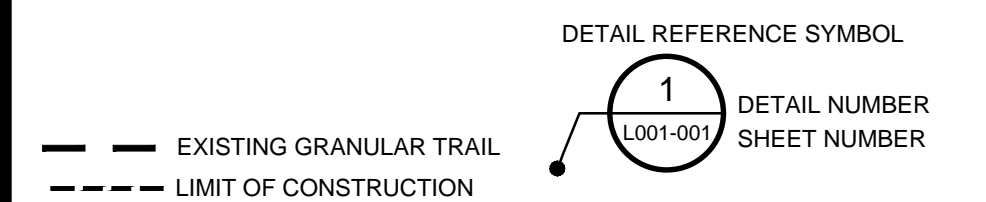
1 SITE #2 OVERALL PLAN
SCALE: 1:1000



Stantec Consulting Ltd.
10160 - 112 Street
Edmonton AB Canada
Tel. 780.917.7000
www.stantec.com

Copyright Reserved
The Contractor shall verify and be responsible for all dimensions. DO NOT scale the drawing - any errors or omissions shall be reported to Stantec without delay. The Copyrights to all designs and drawings are the property of Stantec. Reproduction or use for any purpose other than that authorized by Stantec is forbidden.

Legend



Notes
UTILITY SETBACKS
LANDSCAPE CONTRACTOR TO CALL 'ALBERTA ONE-CALL' AT 1-800-242-3447 TO HAVE ALL EXISTING SITE UTILITIES LOCATED PRIOR TO CONSTRUCTION AND PLANT NO CLOSER THAN THE FOLLOWING DIMENSIONS FROM THE SERVICES:

1. 1.0 m FROM POWER LINES
2. 3.5 m FROM ALL POWER HARDWARE
3. 1.8 m FROM WATER MAINS, WATER VALVES, MANUAL AIRVENTS, AND SERVICES
4. 2.0 m FROM SEWER MAINS, AND MANHOLES
5. 1.8 m FROM SEWER SERVICES
6. 1.5 m FROM GAS (NO TREES WITHIN EASEMENT)
7. 7.5 m FROM STREET CORNERS.
8. 3.5 m FROM FIRE HYDRANTS.
9. 1.5 m FROM DRIVEWAYS
10. 1.5 m FROM ALLEY ACCESSES
11. 1.0 m FROM SIDEWALKS
- OR AS PER APPROVED ENG. CROSS SECTIONS
12. 3.5 m FROM TRANSIT ZONES
13. 3.0 m FROM PRIVATE PROPERTY BOUNDARY
14. 1.25 m FROM COLLECTOR ROAD CURB FACE
15. 1.25 m FROM LOCAL ROAD CURB FACE
16. 2.0 m FROM ARTERIAL ROAD CURB FACE
17. 3.5 m FROM YIELD AND STOP SIGNS
18. 3.5 m FROM BUS STOP SIGNS
19. 2.0 m FROM ALL OTHER SIGNS
20. 1.0 m FROM OTHER UNDERGROUND UTILITIES
21. 3.5 m FROM TELUS PEDESTALS
22. 2.0 m FROM TELUS DUCT STRUCTURE
23. 1.0 m FROM TELUS CABLE FACILITIES

LANDSCAPE CONTRACTOR IS RESPONSIBLE FOR DAMAGES AND LIABILITIES INCURRED BY DAMAGES TO SITE UTILITIES.

Development Engineer, Sustainable Development			
Approvals			YY.MM.DD
Revision	By	Appd.	YY.MM.DD
1. FIRST SUBMISSION (60%)	DW	NGS	18.05
Issued	By	Appd.	YY.MM
File Name: LA_McCreek.dwg	DW	CB	NGS
	Dwn.	Chkd.	Dsgn.
			18.03.13
			YY.MM.DD

Permit-Seal

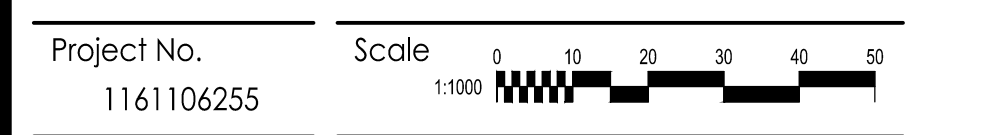


Natalie
Goulet-Sorenson

Client/Project
CITY OF EDMONTON

MILL CREEK RAVINE PARK
TRAIL REHABILITATION
Edmonton, Alberta

Title
SITE #2 OVERALL PLAN

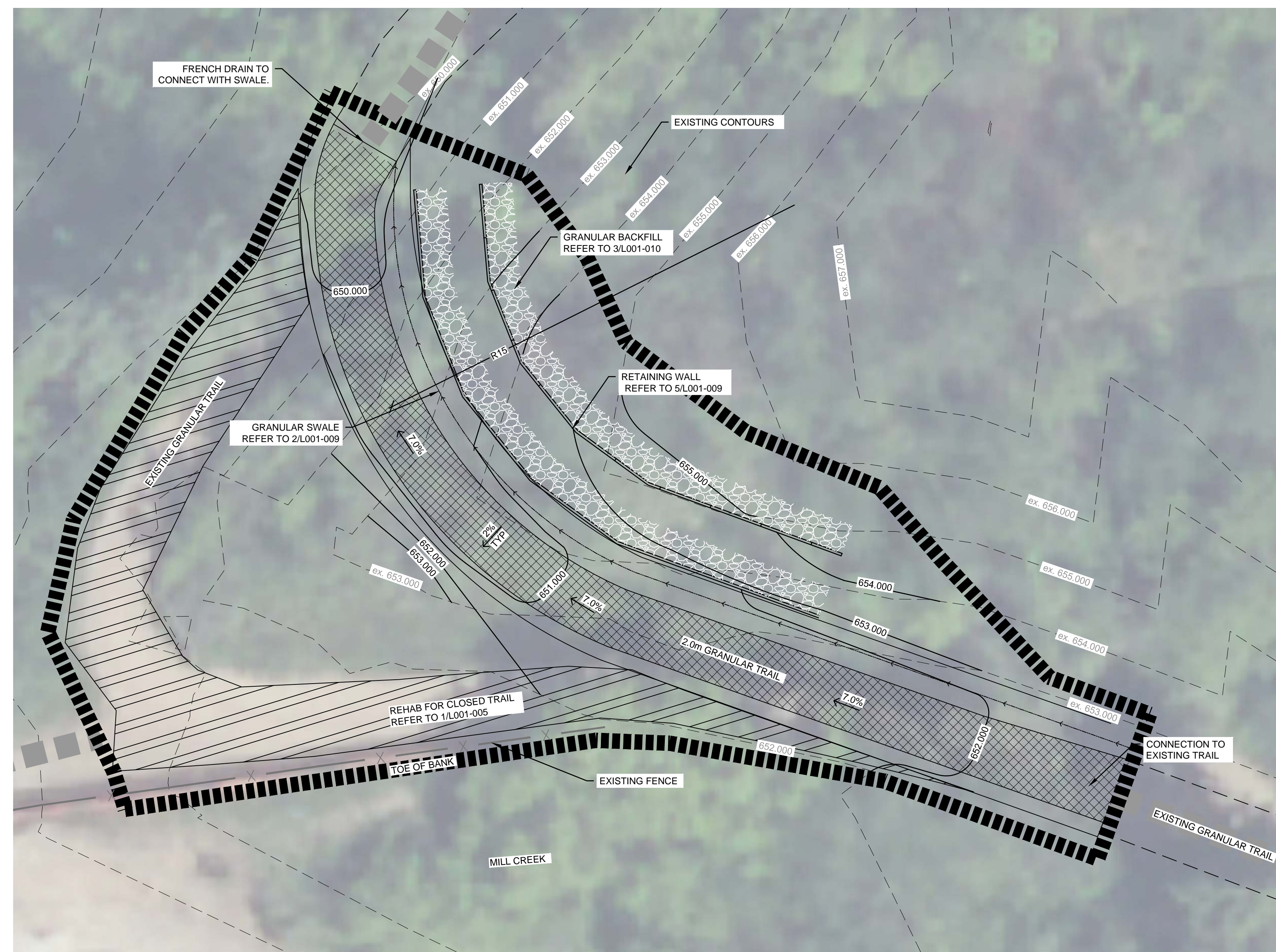




KEY PLAN
SCALE: N.T.S.

LAYOUT AND GRADING NOTES:

- CONTRACTOR TO CALL ALBERTA ONE CALL AT 1-800-242-3447 TO HAVE EXISTING UTILITIES LOCATED PRIOR TO START OF ANY CONSTRUCTION.
- THIS DRAWING IS TO BE READ IN CONJUNCTION WITH THE WRITTEN SPECIFICATIONS, DRAWINGS, AND DETAILS FOR THE PROJECT.
- CONTRACTOR TO ENSURE THAT ALL NECESSARY ARRANGEMENTS ARE MADE WITH THE PIPELINE COMPANIES CONCERNING THE MOVEMENT OF MATERIALS AND EQUIPMENT NEAR ANY PIPELINE RIGHTS OF WAY.
- CONTRACTOR IS RESPONSIBLE FOR THE HOARDING OF ALL TREES WITHIN OR ADJACENT TO CONSTRUCTION AREAS.
- CONTRACTOR IS RESPONSIBLE FOR THE ADJUSTMENT OF ALL EXISTING CATCHBASINS, CATCHBASIN MANHOLES, MANHOLES, WATER VALVES, HYDRANTS, ETC. TO MATCH PROPOSED GRADES.
- ENSURE POSITIVE DRAINAGE IN ALL SWALES AS SHOWN ON PLAN. DO NOT PERMIT POOLING OF WATER IN DRAINAGE SWALE.
- CONTRACTOR IS RESPONSIBLE FOR HAULING OF ALL EXCESS MATERIALS OFF THE SITE.
- CONTRACTOR IS RESPONSIBLE FOR GENERAL SITE CLEAN UP.
- CONTRACTOR IS RESPONSIBLE FOR ANY DAMAGE TO LANDSCAPED AREAS AND MUST MAKE ALL NECESSARY RESTORATIONS AND REPAIRS.
- ALL ANCILLARY WORK NORMALLY ASSOCIATED WITH THIS TYPE OF CONSTRUCTION SHALL BE DEEMED TO BE PART OF THE CONTRACT.
- ALL QUANTITIES ARE APPROXIMATE ONLY.
- GRADES TO BE APPROVED BY LANDSCAPE ARCHITECT PRIOR TO CONSTRUCTION STARTING.
- CONTRACTOR TO HOLD ROUGH GRADES 450mm BELOW FINISHED GRADE FOR PLANT BEDS, 150mm FOR SEEDED AREAS, 200mm FOR WALKS, 100mm FOR SODDED AREAS.
- STANDARD CONTOUR INTERVAL IS 500mm. SPOT ELEVATIONS AS SHOWN. ALL SPOT ELEVATIONS IN METERS. BERMS AND SLOPES TO BE GRADED SMOOTHLY. ELIMINATE ROUGH SPOTS AND LOW AREAS TO ENSURE POSITIVE DRAINAGE PRIOR TO SEEDING.
- ALL PROPOSED GRADES TO MEET EXISTING GRADES AT PROPERTY LINE WITH A SMOOTH TRANSITION. LIMIT OF GRADING NOT TO EXTEND BEYOND PROPERTY LINE. GRADES TO MEET CURB OR WALK SMOOTHLY. LANDSCAPE ARCHITECT TO APPROVE ROUGH AND FINISHED GRADES.
- MAXIMUM SLOPE OF ANY LANDSCAPED AREA NOT TO EXCEED 33%.
- CONTRACTOR TO TAKE NECESSARY PRECAUTIONS TO PROTECT ALL SITE FEATURES EXISTING AT THE TIME OF CONSTRUCTION UNLESS SPECIFIED FOR DEMOLITION ON THE DRAWING. THIS INCLUDES ALL SURVEY BARS, STAKES OR MONUMENTS. MAKE GOOD ANY DAMAGE.
- ANY AMBIGUITY IN THIS DRAWING OR ACCOMPANYING DETAILS IS TO BE REPORTED TO THE LANDSCAPE ARCHITECT FOR DIRECTION. CONTRACTOR NOT TO PROCEED IN UNCERTAINTY.
- LIMITS OF WORK TO BE CLEARLY UNDERSTOOD BY THE CONTRACTOR PRIOR TO ANY WORK TAKING PLACE ON SITE. CONTRACTOR TO CONTACT LANDSCAPE ARCHITECT FOR CLARIFICATION IF REQUIRED.
- CONTRACTOR TO VISIT SITE TO CONFIRM ALL SITE CONDITIONS PRIOR TO SUBMITTING BIDS. DISCREPANCIES TO BE REPORTED TO LANDSCAPE ARCHITECT FOR CLARIFICATION.
- CONTRACTOR TO VERIFY ALL DIMENSIONS AND REPORT ANY DISCREPANCIES TO THE LANDSCAPE ARCHITECT.
- LAYOUT TO BE APPROVED BY LANDSCAPE ARCHITECT PRIOR TO CONSTRUCTION STARTING.
- ALL MEASUREMENTS ARE IN METERS UNLESS OTHERWISE NOTED.
- CONTRACTOR SHALL SUPPLY ALL MATERIALS IN QUANTITIES SUFFICIENT TO COMPLETE WORK SHOWN ON THESE DRAWINGS. ANY DISCREPANCIES SHALL BE REPORTED TO THE LANDSCAPE ARCHITECT FOR DIRECTION.
- NO SUBSTITUTIONS OF MATERIALS, PRODUCTS OR QUANTITIES WITHOUT PRIOR CONSENT OF LANDSCAPE ARCHITECT.



1 SITE #2 GRADING AND LAYOUT
SCALE: 1:100



Stantec Consulting Ltd.
10160 - 112 Street
Edmonton AB Canada
Tel. 780.917.7000
www.stantec.com

Copyright Reserved

The Contractor shall verify and be responsible for all dimensions. DO NOT scale the drawing - any errors or omissions shall be reported to Stantec without delay. The Copyrights to all designs and drawings are the property of Stantec. Reproduction or use for any purpose other than that authorized by Stantec is forbidden.

Legend

- EXISTING GRANULAR TRAIL
- PROPOSED CONTOUR
- EXISTING CONTOUR (MAJOR)
- LIMIT OF CONSTRUCTION
- DETAIL REFERENCE SYMBOL
- 1 L001-001
- DETAIL NUMBER SHEET NUMBER

Notes

UTILITY SETBACKS

LANDSCAPE CONTRACTOR TO CALL 'ALBERTA ONE-CALL' AT 1-800-242-3447 TO HAVE ALL EXISTING SITE UTILITIES LOCATED PRIOR TO CONSTRUCTION AND PLANT NO CLOSER THAN THE FOLLOWING DIMENSIONS FROM THE SERVICES:

- 1.0 m FROM POWER LINES
- 3.5 m FROM ALL POWER HARDWARE
- 1.8 m FROM WATER MAINS, WATER VALVES, MANUAL AIRVENTS, AND SERVICES
- 2.0 m FROM SEWER MAINS, AND MANHOLES
- 1.8 m FROM SEWER SERVICES
- 1.5 m FROM GAS (NO TREES WITHIN EASEMENT)
- 7.5 m FROM STREET CORNERS.
- 3.5 m FROM FIRE HYDRANTS.
- 1.5 m FROM DRIVEWAYS
- 1.5 m FROM ALLEY ACCESSES
- 1.0 m FROM SIDEWALKS
- OR AS PER APPROVED ENG. CROSS SECTIONS
- 3.5 m FROM TRANSIT ZONES
- 3.0 m FROM PRIVATE PROPERTY BOUNDARY
- 1.25 m FROM COLLECTOR ROAD CURB FACE
- 1.25 m FROM LOCAL ROAD CURB FACE
- 2.0 m FROM ARTERIAL ROAD CURB FACE
- 3.5 m FROM YIELD AND STOP SIGNS
- 3.5 m FROM BUS STOP SIGNS
- 2.0 m FROM ALL OTHER SIGNS
- 1.0 m FROM OTHER UNDERGROUND UTILITIES
- 3.5 m FROM TELUS PEDESTALS
- 2.0 m FROM TELUS DUCT STRUCTURE
- 1.0 m FROM TELUS CABLE FACILITIES

LANDSCAPE CONTRACTOR IS RESPONSIBLE FOR DAMAGES AND LIABILITIES INCURRED BY DAMAGES TO SITE UTILITIES.

Development Engineer, Sustainable Development			
Approvals			YY.MM.DD
Revision	By	Appd.	YY.MM.DD
1: FIRST SUBMISSION (60%)	DW	NGS	18.05
Issued	By	Appd.	YY.MM
File Name: LA_MillCreek.dwg	DW	CB	NGS
	Dwn.	Chkd.	Dsgn.
			18.03.13
			YY.MM.DD

Permit-Seal



Natalie
Goulet-Sorenson

Client/Project

CITY OF EDMONTON

MILL CREEK ZAVINE PARK
TRAIL REHABILITATION

Edmonton, Alberta

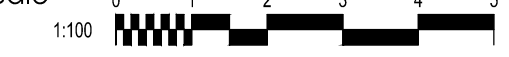
Title

SITE #2 LAYOUT AND GRADING

Project No.

1161106255

Scale



V:\1161106255\drawing_Landscape\LA_MillCreek.dwg

2019-3-18 2:02pm BY: DWIGGLESWORTH

Drawing No.

L001-004

4 of 10



KEY PLAN
SCALE: N.T.S.

NATIVE SEED MIX

CERTIFIED CANADA NO. 1 MIXTURE, MINIMUM GERMINATION OF 75%, MINIMUM PURITY OF 97%. ALL SEED MUST BE FROM A RECOGNIZED SEED FARM, MEETING THE REQUIREMENTS FOR THE SEEDS ACT FOR CANADA NO. 1 SEED. SEED SHALL BE CERTIFIED NO. 1 GRADE. A GERMINATION TEST MAY BE REQUESTED AND ALL LAWN SEED MUST COMPLY WITH FEDERAL AND PROVINCIAL SEED LAWS.

FOR NON-MAINTAINED NATIVE LANDSCAPING:

- 15% AWNED WHEATGRASS (AGROPYRON TRACHYCAULUM VAR. UNILATERALE)
- 15% SLENDER WHEATGRASS (AGROPYRON TRACHYCAULUM VAR. TRACHYCAULUM)
- 15% WESTERN WHEAT (AGROPYRON SMITHII)
- 5% SLOUGHGRASS (BECKMANNIA SYZIGACHNE)
- 5% IDAHO FESCUE (FESTUCA IDAHOENSIS)
- 5% ALKALI BLUEGRASS (POA SECUNDA SSP. JUNCIFOLIA)
- 5% JUNEGRASS (KOELERIA MACRANTHA)
- 5% SANDBERG BLUEGRASS (POA SECUNDA)
- 20% GREEN NEEDLEGRASS (STIPA VIRIDULA)
- 10% ROCKY MOUNTAIN FESCUE (FESTUCA SAXIMONTANA)

SEED RATE: 250KG PER HECTARE

PLANTING NOTES:

1. CONTRACTOR TO CALL ALBERTA ONE CALL AT 1-800- 242-3447 TO HAVE EXISTING UTILITIES LOCATED PRIOR TO START OF ANY CONSTRUCTION.
2. CONTRACTOR TO ENSURE THAT ALL NECESSARY ARRANGEMENTS ARE MADE WITH THE PIPELINE COMPANIES CONCERNING THE MOVEMENT OF MATERIALS AND EQUIPMENT NEAR ANY PIPELINE RIGHTS OF WAY.
3. CONTRACTOR IS RESPONSIBLE FOR THE HOARDING OF ALL TREES WITHIN OR ADJACENT TO CONSTRUCTION AREAS.
4. CONTRACTOR IS RESPONSIBLE FOR THE ADJUSTMENT OF ALL EXISTING CATCHBASINS, CATCHBASIN MANHOLES, MANHOLES, WATER VALVES, HYDRANTS, ETC. TO MATCH PROPOSED GRADES.
5. CONTRACTOR TO SUPPLY AND INSTALL 12mm FIBRE MASTIC JOINT WHENEVER MATCHING TO OR ABUTTING TO ANY CONCRETE OR BLDG.
6. CONTRACTOR IS RESPONSIBLE FOR HAULING OF ALL EXCESS MATERIALS OFF THE SITE.
7. CONTRACTOR IS RESPONSIBLE FOR GENERAL SITE CLEAN UP.
8. CONTRACTOR IS RESPONSIBLE FOR ANY DAMAGE TO LANDSCAPED AREAS AND MUST MAKE ALL NECESSARY RESTORATIONS AND REPAIRS.
9. ALL ANCILLARY WORK NORMALLY ASSOCIATED WITH THIS TYPE OF CONSTRUCTION SHALL BE DEEMED TO BE PART OF THE CONTRACT.
10. CONTRACTOR TO VERIFY ALL DIMENSIONS AND REPORT ANY DISCREPANCIES TO THE LANDSCAPE ARCHITECT.
11. LAYOUT TO BE APPROVED BY LANDSCAPE ARCHITECT PRIOR TO CONSTRUCTION STARTING.
12. ALL MEASUREMENTS ARE IN METERS UNLESS OTHERWISE NOTED.
13. CONTRACTOR TO OBTAIN APPROVAL FOR PLANT MATERIAL LAYOUT.
14. ALL PLANT MATERIAL TO BE NURSERY GROWN STOCK AND SHALL MEET OR EXCEED THE SPECIFICATIONS OF THE CANADIAN NURSERY TRADES ASSOC. FOR SIZE, HEIGHT, SPREAD, GRADING, QUALITY, AND METHOD OF CULTIVATION.
15. NO SUBSTITUTIONS OF MATERIALS, PRODUCTS OR QUANTITIES WITHOUT PRIOR CONSENT OF LANDSCAPE ARCHITECT.
16. ALL PLANT MATERIAL AND WORKMANSHIP TO CONFORM TO THE REQUIREMENTS OF THE CITY OF EDMONTON DESIGN AND CONSTRUCTION STANDARDS IN ITS MOST RECENT EDITION.
17. CONTRACTOR TO CONTACT A CITY OF EDMONTON FORESTRY REPRESENTATIVE A MINIMUM OF FIVE (5) DAYS PRIOR TO THE CONSTRUCTION OF THE CORED BOULEVARDS.

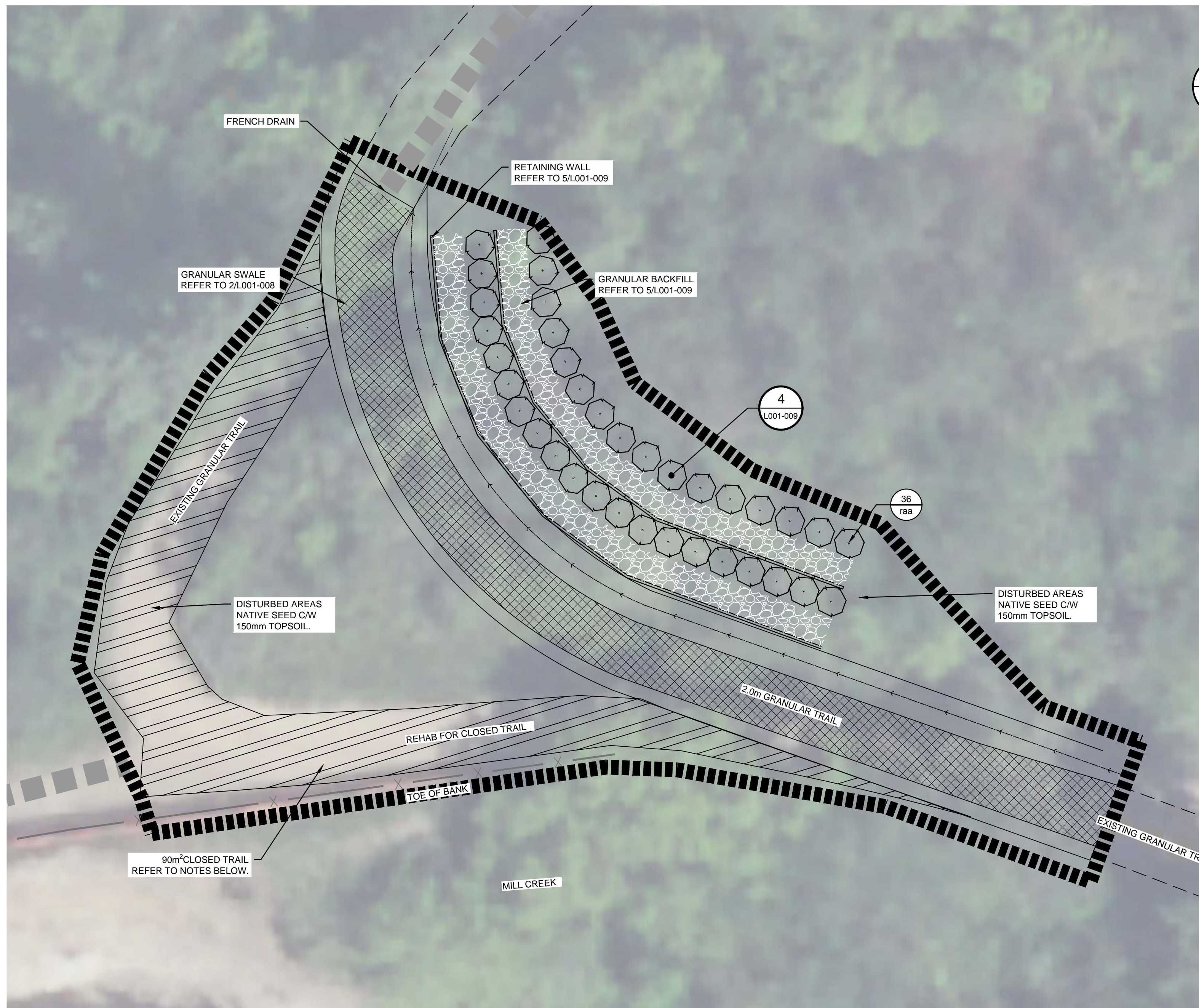
PLANT MATERIAL LIST: (THIS SHEET ONLY)

QTY./SYM. BOTANICAL/COMMON NAME SIZE CONDITION

DECIDUOUS SHRUBS

(36) raa	<i>Rosa acicularis</i> PRICKLY ROSE	450 mm HT. MIN. #6 CONTAINER	CONTAINER GROWN, OR BALLED & BURLAPPED 4 CANES OR MORE 400mm HT. WITH MIN ROOT SPREAD 250mm.
-------------	--	---------------------------------	--

NOTE: ALL TREES TO BE HIGH HEADED AND EXHIBIT A FULL AND UNIFORM CROWN, WITH A SINGLE, DOMINANT, WELL DEVELOPED LEADER; TREES WITH BROKEN OR DAMAGED OR MISSING LEADERS WILL NOT BE ACCEPTED. ALL PLANT MATERIAL MUST CONFORM TO THE CITY OF EDMONTON DESIGN AND CONSTRUCTION STANDARDS.



1 SITE #2 PLANTING PLAN
SCALE: 1;100

CLOSED TRAIL NOTES:

1. REMEDIATE WITH 150mm DEPTH TYPE1 TOPSOIL AND WILLOW WHIPS AT 0.5m² SPACING.
2. PRICKLY ROSES AT EACH END OF THE CLOSED TRAIL.



Stantec Consulting Ltd.
10160 - 112 Street
Edmonton AB Canada
Tel. 780.917.7000
www.stantec.com

Copyright Reserved

The Contractor shall verify and be responsible for all dimensions. DO NOT scale the drawing - any errors or omissions shall be reported to Stantec without delay. The Copyrights to all designs and drawings are the property of Stantec. Reproduction or use for any purpose other than that authorized by Stantec is forbidden.

Legend

- EXISTING GRANULAR TRAIL
- LIMIT OF CONSTRUCTION
- PLANT REFERENCE SYMBOL
- QUANTITY
- PLANT SYMBOL
- DETAIL REFERENCE SYMBOL
- DETAIL NUMBER
- SHEET NUMBER

Notes

UTILITY SETBACKS

LANDSCAPE CONTRACTOR TO CALL 'ALBERTA ONE-CALL' AT 1-800-242-3447 TO HAVE ALL EXISTING SITE UTILITIES LOCATED PRIOR TO CONSTRUCTION AND PLANT NO CLOSER THAN THE FOLLOWING DIMENSIONS FROM THE SERVICES:

1. 1.0 m FROM POWER LINES
2. 3.5 m FROM ALL POWER HARDWARE
3. 1.8 m FROM WATER MAINS, WATER VALVES, MANUAL AIRVENTS, AND SERVICES
4. 2.0 m FROM SEWER MAINS, AND MANHOLES
5. 1.8 m FROM SEWER SERVICES
6. 1.5 m FROM GAS (NO TREES WITHIN EASEMENT)
7. 7.5 m FROM STREET CORNERS.
8. 3.5 m FROM FIRE HYDRANTS.
9. 1.5 m FROM DRIVEWAYS
10. 1.5 m FROM ALLEY ACCESSES
11. 1.0 m FROM SIDEWALKS
- OR AS PER APPROVED ENG. CROSS SECTIONS
12. 3.5 m FROM TRANSIT ZONES
13. 3.0 m FROM PRIVATE PROPERTY BOUNDARY
14. 1.25 m FROM COLLECTOR ROAD CURB FACE
15. 1.25 m FROM LOCAL ROAD CURB FACE
16. 2.0 m FROM ARTERIAL ROAD CURB FACE
17. 3.5 m FROM YIELD AND STOP SIGNS
18. 3.5 m FROM BUS STOP SIGNS
19. 2.0 m FROM ALL OTHER SIGNS
20. 1.0 m FROM OTHER UNDERGROUND UTILITIES
21. 3.5 m FROM TELUS PEDESTALS
22. 2.0 m FROM TELUS DUCT STRUCTURE
23. 1.0 m FROM TELUS CABLE FACILITIES

LANDSCAPE CONTRACTOR IS RESPONSIBLE FOR DAMAGES AND LIABILITIES INCURRED BY DAMAGES TO SITE UTILITIES.

Development Engineer, Sustainable Development			
Approvals			YY.MM.DD
Revision	By	Appd.	YY.MM.DD
1. FIRST SUBMISSION (60%)	DW	NGS	18.05
Issued	By	Appd.	YY.MM
File Name: LA_MMCreek.dwg	DW	CB	NGS
	Dwn.	Chkd.	Dsgn.
			18.03.13
			YY.MM.DD

Permit-Seal



Natalie
Goulet-Sorenson

Client/Project

CITY OF EDMONTON

MILL CREEK RAVINE PARK
TRAIL REHABILITATION

Edmonton, Alberta

Title

SITE #2 PLANTING PLAN

Project No.

1161106255

Scale



V:\1161\active\1161106255\drawing\Landscape\LA_MMCreek.dwg

2019-3-18 2:02pm BY: DWIGLSEWORTH

Drawing No.

L001-005

5 of 10



KEY PLAN
SCALE: N.T.S.



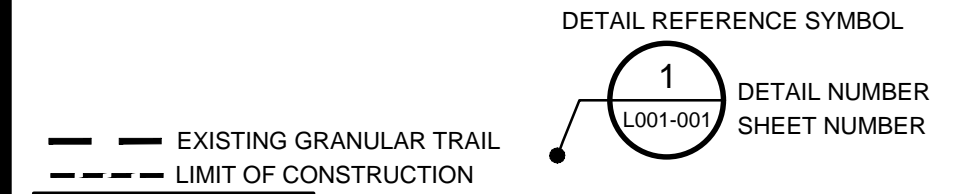
1 SITE #3 OVERALL PLAN
SCALE: 1:1000



Stantec Consulting Ltd.
10160 - 112 Street
Edmonton AB Canada
Tel. 780.917.7000
www.stantec.com

Copyright Reserved
The Contractor shall verify and be responsible for all dimensions. DO NOT scale the drawing - any errors or omissions shall be reported to Stantec without delay. The Copyrights to all designs and drawings are the property of Stantec. Reproduction or use for any purpose other than that authorized by Stantec is forbidden.

Legend



Notes

UTILITY SETBACKS
LANDSCAPE CONTRACTOR TO CALL 'ALBERTA ONE-CALL' AT 1-800-242-3447 TO HAVE ALL EXISTING SITE UTILITIES LOCATED PRIOR TO CONSTRUCTION AND PLANT NO CLOSER THAN THE FOLLOWING DIMENSIONS FROM THE SERVICES:

1. 1.0 m FROM POWER LINES
2. 3.5 m FROM ALL POWER HARDWARE
3. 1.8 m FROM WATER MAINS, WATER VALVES, MANUAL AIRVENTS, AND SERVICES
4. 2.0 m FROM SEWER MAINS, AND MANHOLES
5. 1.8 m FROM SEWER SERVICES
6. 1.5 m FROM GAS (NO TREES WITHIN EASEMENT)
7. 7.5 m FROM STREET CORNERS.
8. 3.5 m FROM FIRE HYDRANTS.
9. 1.5 m FROM DRIVEWAYS
10. 1.5 m FROM ALLEY ACCESSES
11. 1.0 m FROM SIDEWALKS
- OR AS PER APPROVED ENG. CROSS SECTIONS
12. 3.5 m FROM TRANSIT ZONES
13. 3.0 m FROM PRIVATE PROPERTY BOUNDARY
14. 1.25 m FROM COLLECTOR ROAD CURB FACE
15. 1.25 m FROM LOCAL ROAD CURB FACE
16. 2.0 m FROM ARTERIAL ROAD CURB FACE
17. 3.5 m FROM YIELD AND STOP SIGNS
18. 3.5 m FROM BUS STOP SIGNS
19. 2.0 m FROM ALL OTHER SIGNS
20. 1.0 m FROM OTHER UNDERGROUND UTILITIES
21. 3.5 m FROM TELUS PEDESTALS
22. 2.0 m FROM TELUS DUCT STRUCTURE
23. 1.0 m FROM TELUS CABLE FACILITIES

LANDSCAPE CONTRACTOR IS RESPONSIBLE FOR DAMAGES AND LIABILITIES INCURRED BY DAMAGES TO SITE UTILITIES.

Development Engineer, Sustainable Development			
Approvals			YY.MM.DD
Revision	By	Appd.	YY.MM.DD
1. FIRST SUBMISSION (60%)	DW	NGS	18.05
Issued	By	Appd.	YY.MM
File Name: LA_McCreek.dwg	DW	CB	NGS
	Dwn.	Chkd.	Dsgn.
			18.03.13
			YY.MM.DD

Permit-Seal



Natalie
Goulet-Sorenson

Client/Project

CITY OF EDMONTON

MILL CREEK RAVINE PARK
TRAIL REHABILITATION

Edmonton, Alberta

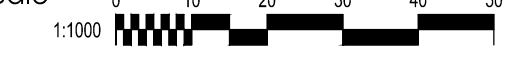
Title

SITE #3 OVERALL PLAN

Project No.

1161106255

Scale



V:\1161\active\1161106255\drawing_Landscape\LA_McCreek.dwg

2019-3-18 2:02pm BY: DWIGGLESWORTH

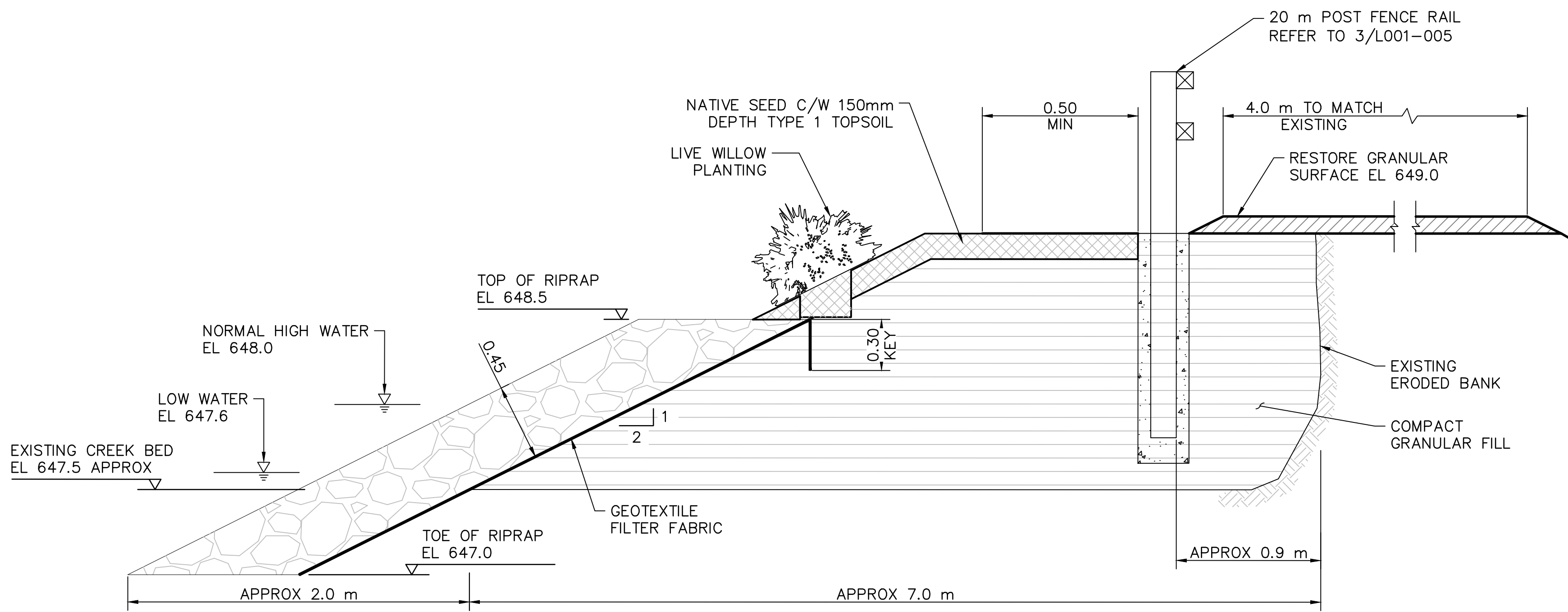
6 of 10

Drawing No.

L001-006



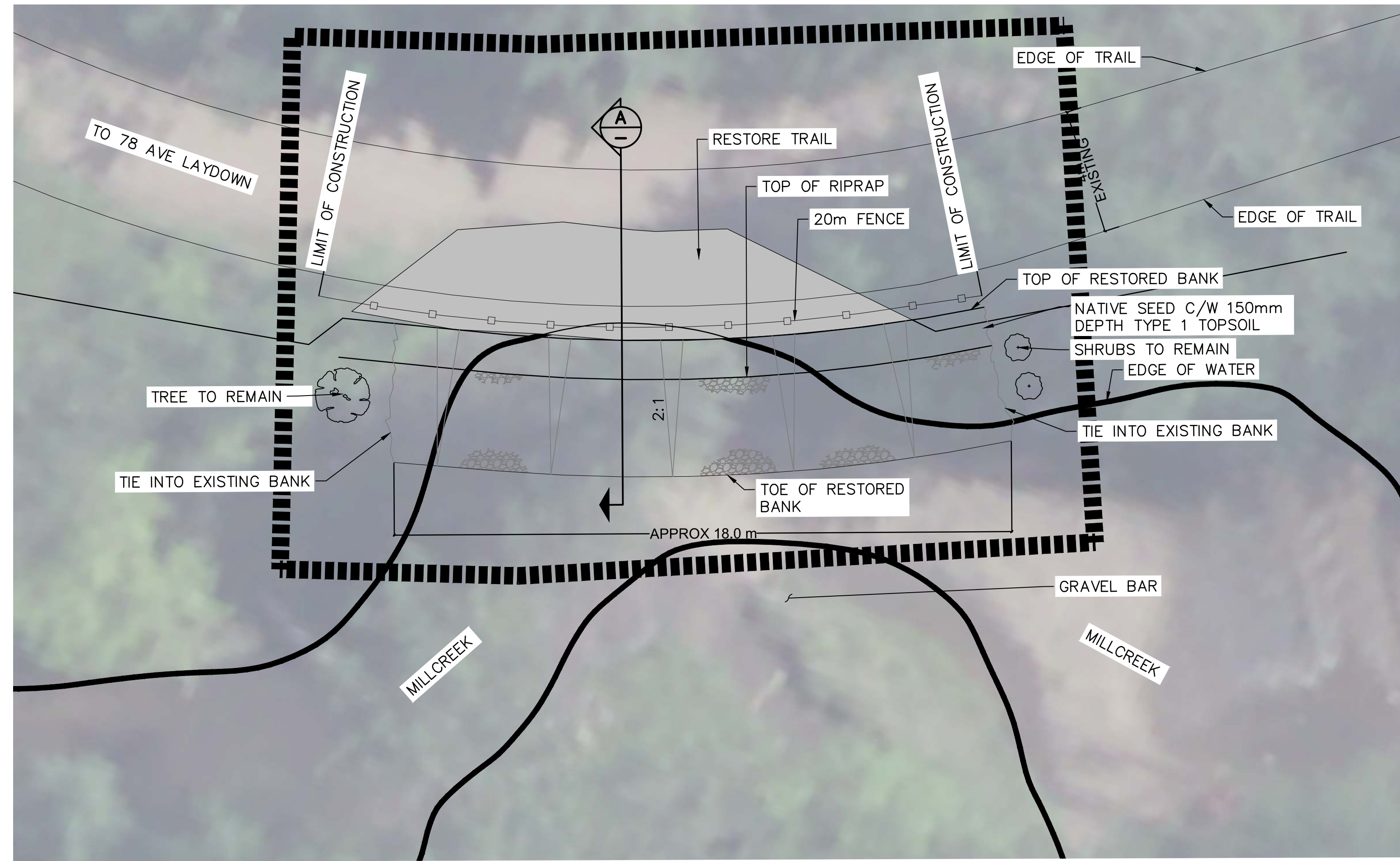
KEY PLAN
SCALE: N.T.S.



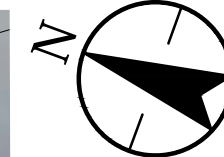
A STIE #3 SECTION
SCALE: 1:20

LAYOUT AND GRADING NOTES:

- CONTRACTOR TO CALL ALBERTA ONE CALL AT 1-800-242-3447 TO HAVE EXISTING UTILITIES LOCATED PRIOR TO START OF ANY CONSTRUCTION.
- THIS DRAWING IS TO BE READ IN CONJUNCTION WITH THE WRITTEN SPECIFICATIONS, DRAWINGS, AND DETAILS FOR THE PROJECT.
- CONTRACTOR TO ENSURE THAT ALL NECESSARY ARRANGEMENTS ARE MADE WITH THE PIPELINE COMPANIES CONCERNING THE MOVEMENT OF MATERIALS AND EQUIPMENT NEAR ANY PIPELINE RIGHTS OF WAY.
- CONTRACTOR IS RESPONSIBLE FOR THE HOARDING OF ALL TREES WITHIN OR ADJACENT TO CONSTRUCTION AREAS.
- CONTRACTOR IS RESPONSIBLE FOR THE ADJUSTMENT OF ALL EXISTING CATCHBASINS, CATCHBASIN MANHOLES, MANHOLES, WATER VALVES, HYDRANTS, ETC. TO MATCH PROPOSED GRADES.
- ENSURE POSITIVE DRAINAGE IN ALL SWALES AS SHOWN ON PLAN. DO NOT PERMIT POOLING OF WATER IN DRAINAGE SWALE.
- CONTRACTOR IS RESPONSIBLE FOR HAULING OF ALL EXCESS MATERIALS OFF THE SITE.
- CONTRACTOR IS RESPONSIBLE FOR GENERAL SITE CLEAN UP.
- CONTRACTOR IS RESPONSIBLE FOR ANY DAMAGE TO LANDSCAPED AREAS AND MUST MAKE ALL NECESSARY RESTORATIONS AND REPAIRS.
- ALL ANCILLARY WORK NORMALLY ASSOCIATED WITH THIS TYPE OF CONSTRUCTION SHALL BE DEEMED TO BE PART OF THE CONTRACT.
- ALL QUANTITIES ARE APPROXIMATE ONLY.
- GRADES TO BE APPROVED BY LANDSCAPE ARCHITECT PRIOR TO CONSTRUCTION STARTING.
- CONTRACTOR TO HOLD ROUGH GRADES 450mm BELOW FINISHED GRADE FOR PLANT BEDS, 150mm FOR SEEDED AREAS, 200mm FOR WALKS, 100mm FOR SODDED AREAS.
- STANDARD CONTOUR INTERVAL IS 500mm. SPOT ELEVATIONS AS SHOWN. ALL SPOT ELEVATIONS IN METERS. BERMS AND SLOPES TO BE GRADED SMOOTHLY. ELIMINATE ROUGH SPOTS AND LOW AREAS TO ENSURE POSITIVE DRAINAGE PRIOR TO SEEDING.
- ALL PROPOSED GRADES TO MEET EXISTING GRADES AT PROPERTY LINE WITH A SMOOTH TRANSITION. LIMIT OF GRADING NOT TO EXTEND BEYOND PROPERTY LINE. GRADES TO MEET CURB OR WALK SMOOTHLY. LANDSCAPE ARCHITECT TO APPROVE ROUGH AND FINISHED GRADES.
- MAXIMUM SLOPE OF ANY LANDSCAPED AREA NOT TO EXCEED 33%.
- CONTRACTOR TO TAKE NECESSARY PRECAUTIONS TO PROTECT ALL SITE FEATURES EXISTING AT THE TIME OF CONSTRUCTION UNLESS SPECIFIED FOR DEMOLITION ON THE DRAWING. THIS INCLUDES ALL SURVEY BARS, STAKES OR MONUMENTS. MAKE GOOD ANY DAMAGE.
- ANY AMBIGUITY IN THIS DRAWING OR ACCOMPANYING DETAILS IS TO BE REPORTED TO THE LANDSCAPE ARCHITECT FOR DIRECTION. CONTRACTOR NOT TO PROCEED IN UNCERTAINTY.
- LIMITS OF WORK TO BE CLEARLY UNDERSTOOD BY THE CONTRACTOR PRIOR TO ANY WORK TAKING PLACE ON SITE. CONTRACTOR TO CONTACT LANDSCAPE ARCHITECT FOR CLARIFICATION IF REQUIRED.
- CONTRACTOR TO VISIT SITE TO CONFIRM ALL SITE CONDITIONS PRIOR TO SUBMITTING BIDS. DISCREPANCIES TO BE REPORTED TO LANDSCAPE ARCHITECT FOR CLARIFICATION.
- CONTRACTOR TO VERIFY ALL DIMENSIONS AND REPORT ANY DISCREPANCIES TO THE LANDSCAPE ARCHITECT.
- LAYOUT TO BE APPROVED BY LANDSCAPE ARCHITECT PRIOR TO CONSTRUCTION STARTING.
- ALL MEASUREMENTS ARE IN METERS UNLESS OTHERWISE NOTED.
- CONTRACTOR SHALL SUPPLY ALL MATERIALS IN QUANTITIES SUFFICIENT TO COMPLETE WORK SHOWN ON THESE DRAWINGS. ANY DISCREPANCIES SHALL BE REPORTED TO THE LANDSCAPE ARCHITECT FOR DIRECTION.
- NO SUBSTITUTIONS OF MATERIALS, PRODUCTS OR QUANTITIES WITHOUT PRIOR CONSENT OF LANDSCAPE ARCHITECT.



1 SITE #3 GRADING AND LAYOUT
SCALE: 1:100



Stantec Consulting Ltd.
10160 - 112 Street
Edmonton AB Canada
Tel. 780.917.7000
www.stantec.com

Copyright Reserved
The Contractor shall verify and be responsible for all dimensions. DO NOT scale the drawing - any errors or omissions shall be reported to Stantec without delay. The Copyrights to all designs and drawings are the property of Stantec. Reproduction or use for any purpose other than that authorized by Stantec is forbidden.

- Legend
- POST AND RAIL FENCING
 - EXISTING GRANULAR TRAIL
 - PROPOSED CONTOUR
 - EXISTING CONTOUR (MAJOR)
 - EXISTING CONTOUR (MINOR)
 - LIMIT OF CONSTRUCTION
- Notes
- UTILITY SETBACKS
- LANDSCAPE CONTRACTOR TO CALL 'ALBERTA ONE-CALL' AT 1-800-242-3447 TO HAVE ALL EXISTING SITE UTILITIES LOCATED PRIOR TO CONSTRUCTION AND PLANT NO CLOSER THAN THE FOLLOWING DIMENSIONS FROM THE SERVICES:
- 1.0 m FROM POWER LINES
 - 3.5 m FROM ALL POWER HARDWARE
 - 1.8 m FROM WATER MAINS, WATER VALVES, MANUAL AIRVENTS, AND SERVICES
 - 2.0 m FROM SEWER MAINS, AND MANHOLES
 - 1.8 m FROM SEWER SERVICES
 - 1.5 m FROM GAS (NO TREES WITHIN EASEMENT)
 - 7.5 m FROM STREET CORNERS.
 - 3.5 m FROM FIRE HYDRANTS.
 - 1.5 m FROM DRIVEWAYS
 - 1.5 m FROM ALLEY ACCESSES
 - 1.0 m FROM SIDEWALKS
- OR AS PER APPROVED ENG. CROSS SECTIONS
- 3.5 m FROM TRANSIT ZONES
 - 3.0 m FROM PRIVATE PROPERTY BOUNDARY
 - 1.25 m FROM COLLECTOR ROAD CURB FACE
 - 1.25 m FROM LOCAL ROAD CURB FACE
 - 2.0 m FROM ARTERIAL ROAD CURB FACE
 - 3.5 m FROM YIELD AND STOP SIGNS
 - 3.5 m FROM BUS STOP SIGNS
 - 2.0 m FROM ALL OTHER SIGNS
 - 1.0 m FROM OTHER UNDERGROUND UTILITIES
 - 3.5 m FROM TELUS PEDESTALS
 - 2.0 m FROM TELUS DUCT STRUCTURE
 - 1.0 m FROM TELUS CABLE FACILITIES
- LANDSCAPE CONTRACTOR IS RESPONSIBLE FOR DAMAGES AND LIABILITIES INCURRED BY DAMAGES TO SITE UTILITIES.

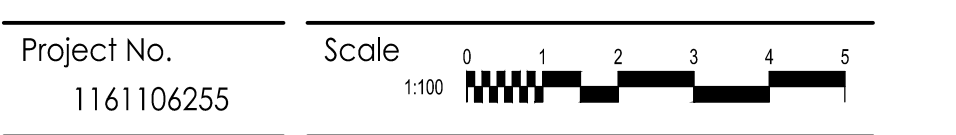
Development Engineer, Sustainable Development				
Approvals				YY.MM.DD
Revision	By	Appd.		YY.MM.DD
1: FIRST SUBMISSION (60%)	DW	NGS		18.05
Issued	By	Appd.		YY.MM
File Name:	LA_MJCreek.dwg	DW	CB	NGS
		Dwn.	Chkd.	Dsgn.
				18.03.13
				YY.MM.DD

Permit-Seal

Natalie Goulet-Sorenson

Client/Project
CITY OF EDMONTON
MILL CREEK RAVINE PARK TRAIL REHABILITATION
Edmonton, Alberta

Title
SITE #3 GRADING AND LAYOUT



Project No. 1161106255
Scale 1:100
Drawing No. L001-007



KEY PLAN
SCALE: N.T.S.

NATIVE SEED MIX

CERTIFIED CANADA NO. 1 MIXTURE, MINIMUM GERMINATION OF 75%, MINIMUM PURITY OF 97%. ALL SEED MUST BE FROM A RECOGNIZED SEED FARM, MEETING THE REQUIREMENTS FOR THE SEEDS ACT FOR CANADA NO. 1 SEED. SEED SHALL BE CERTIFIED NO. 1 GRADE. A GERMINATION TEST MAY BE REQUESTED AND ALL LAWN SEED MUST COMPLY WITH FEDERAL AND PROVINCIAL SEED LAWS.

FOR NON-MAINTAINED NATIVE LANDSCAPING:

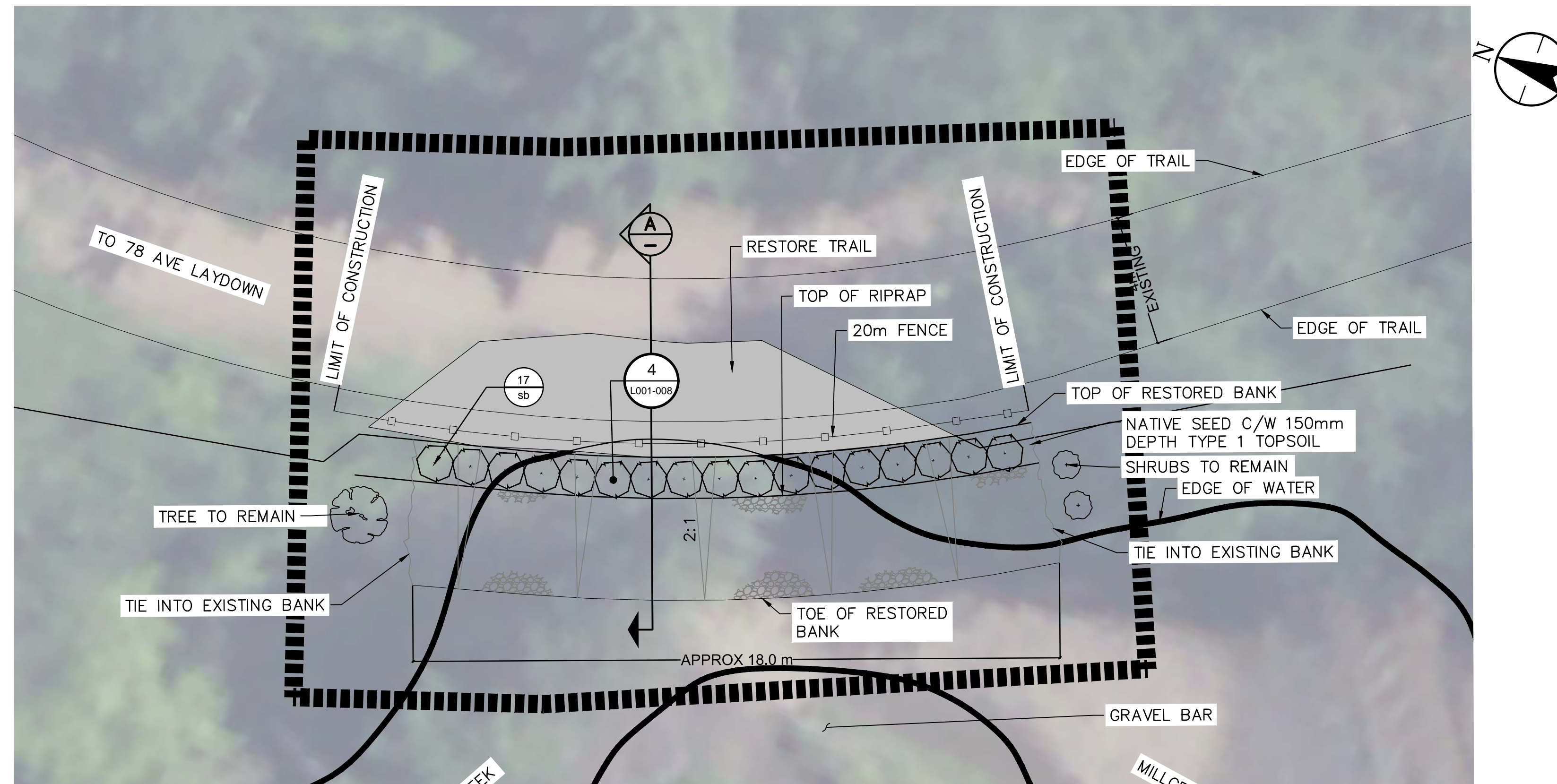
- 15% AWNED WHEATGRASS (AGROPYRON TRACHYCAULUM VAR. UNILATERALE)
- 15% SLENDER WHEATGRASS (AGROPYRON TRACHYCAULUM VAR. TRACHYCAULUM)
- 15% WESTERN WHEAT (AGROPYRON SMITHII)
- 5% SLOUGHGRASS (BECKMANNIA SYZIGACHNE)
- 5% IDAHO FESCUE (FESTUCA IDAHOENSIS)
- 5% ALKALI BLUEGRASS (POA SECUNDA SPP. JUNCIFOLIA)
- 5% JUNEGRASS (KOELERIA MACRANTHA)
- 5% SANDBERG BLUEGRASS (POA SECUNDA)
- 20% GREEN NEEDLEGRASS (STRIPA VIRIDULA)
- 10% ROCKY MOUNTAIN FESCUE (FESTUCA SAXIMONTANA)

SEED RATE: 250KG PER HECTARE

PLANT MATERIAL LIST: (THIS SHEET ONLY)

QTY./SYM.	BOTANICAL/COMMON NAME	SIZE	CONDITION
DECIDUOUS SHRUBS			
(17 sb)	<i>Salix brachycarpa</i> 'Blue Fox' BLUE FOX WILLOW	450 mm HT. MIN. #5 CONTAINER	CONTAINER GROWN, OR BALLED & BURLAPPED 4 CANES OR MORE 400mm HT. WITH MIN ROOT SPREAD 250mm.

NOTE: ALL TREES TO BE HIGH HEADED AND EXHIBIT A FULL AND UNIFORM CROWN, WITH A SINGLE, DOMINANT, WELL DEVELOPED LEADER; TREES WITH BROKEN OR DAMAGED OR MISSING LEADERS WILL NOT BE ACCEPTED. ALL PLANT MATERIAL MUST CONFORM TO THE CITY OF EDMONTON DESIGN AND CONSTRUCTION STANDARDS.



1 SITE #3 PLANTING PLAN
SCALE: 1:100



Stantec Consulting Ltd.
10160 - 112 Street
Edmonton AB Canada
Tel. 780.917.7000
www.stantec.com

Copyright Reserved

The Contractor shall verify and be responsible for all dimensions. DO NOT scale the drawing - any errors or omissions shall be reported to Stantec without delay. The Copyrights to all designs and drawings are the property of Stantec. Reproduction or use for any purpose other than that authorized by Stantec is forbidden.

Legend

- POST AND RAIL FENCING
- EXISTING GRANULAR TRAIL
- PROPOSED CONTOUR
- EXISTING CONTOUR (MAJOR)
- EXISTING CONTOUR (MINOR)
- LIMIT OF CONSTRUCTION
- DETAIL REFERENCE SYMBOL
- 1 L001-001 DETAIL NUMBER
- 1 SHEET NUMBER

Notes

UTILITY SETBACKS

LANDSCAPE CONTRACTOR TO CALL 'ALBERTA ONE-CALL' AT 1-800-242-3447 TO HAVE ALL EXISTING SITE UTILITIES LOCATED PRIOR TO CONSTRUCTION AND PLANT NO CLOSER THAN THE FOLLOWING DIMENSIONS FROM THE SERVICES:

1. 1.0 m FROM POWER LINES
2. 3.5 m FROM ALL POWER HARDWARE
3. 1.8 m FROM WATER MAINS, WATER VALVES, MANUAL AIRVENTS, AND SERVICES
4. 2.0 m FROM SEWER MAINS, AND MANHOLES
5. 1.8 m FROM SEWER SERVICES
6. 1.5 m FROM GAS (NO TREES WITHIN EASEMENT)
7. 7.5 m FROM STREET CORNERS.
8. 3.5 m FROM FIRE HYDRANTS.
9. 1.5 m FROM DRIVEWAYS
10. 1.5 m FROM ALLEY ACCESSES
11. 1.0 m FROM SIDEWALKS
- OR AS PER APPROVED ENG. CROSS SECTIONS
12. 3.5 m FROM TRANSIT ZONES
13. 3.0 m FROM PRIVATE PROPERTY BOUNDARY
14. 1.25 m FROM COLLECTOR ROAD CURB FACE
15. 1.25 m FROM LOCAL ROAD CURB FACE
16. 2.0 m FROM ARTERIAL ROAD CURB FACE
17. 3.5 m FROM YIELD AND STOP SIGNS
18. 3.5 m FROM BUS STOP SIGNS
19. 2.0 m FROM ALL OTHER SIGNS
20. 1.0 m FROM OTHER UNDERGROUND UTILITIES
21. 3.5 m FROM TELUS PEDESTALS
22. 2.0 m FROM TELUS DUCT STRUCTURE
23. 1.0 m FROM TELUS CABLE FACILITIES

LANDSCAPE CONTRACTOR IS RESPONSIBLE FOR DAMAGES AND LIABILITIES INCURRED BY DAMAGES TO SITE UTILITIES.

Development Engineer, Sustainable Development			
Approvals			YY.MM.DD
Revision	By	Appd.	YY.MM.DD
1. FIRST SUBMISSION (60%)	DW	NGS	18.05
Issued	By	Appd.	YY.MM
File Name: LA_MCCreek.dwg	DW	CB	NGS
	Dwn.	Chkd.	Dsgn.
			18.03.13
			YY.MM.DD

Permit-Seal



Natalie
Goulet-Sorenson

Client/Project

CITY OF EDMONTON

MILL CREEK RAVINE PARK
TRAIL REHABILITATION

Edmonton, Alberta

Title

SITE #3 PLANTING PLAN

Project No.

1161106255

Scale



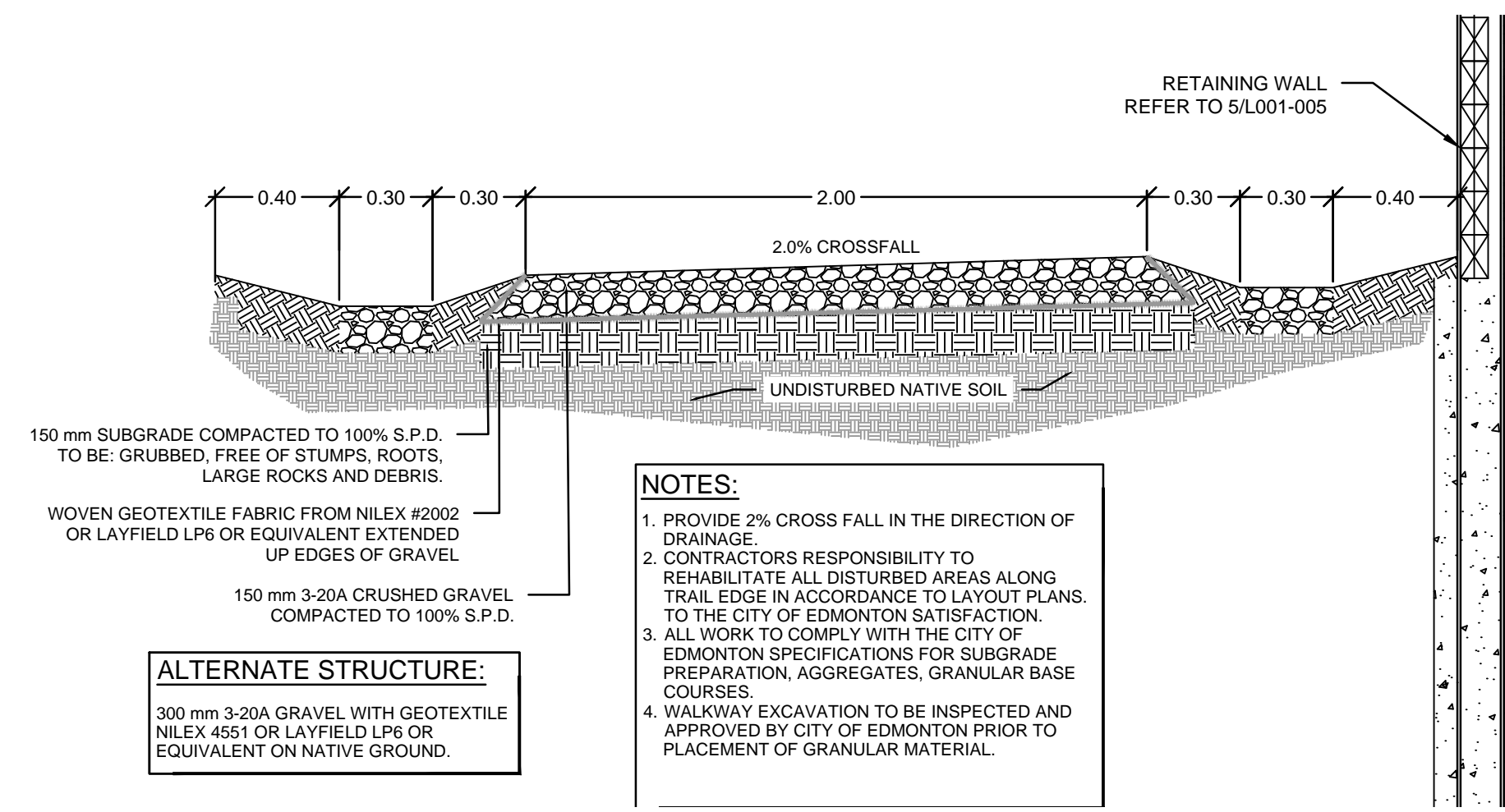
V:\1161\active\1161106255\drawing\Landscape\LA_MCCreek.dwg

2019-3-18 2:02pm BY: DWIGGLESWORTH

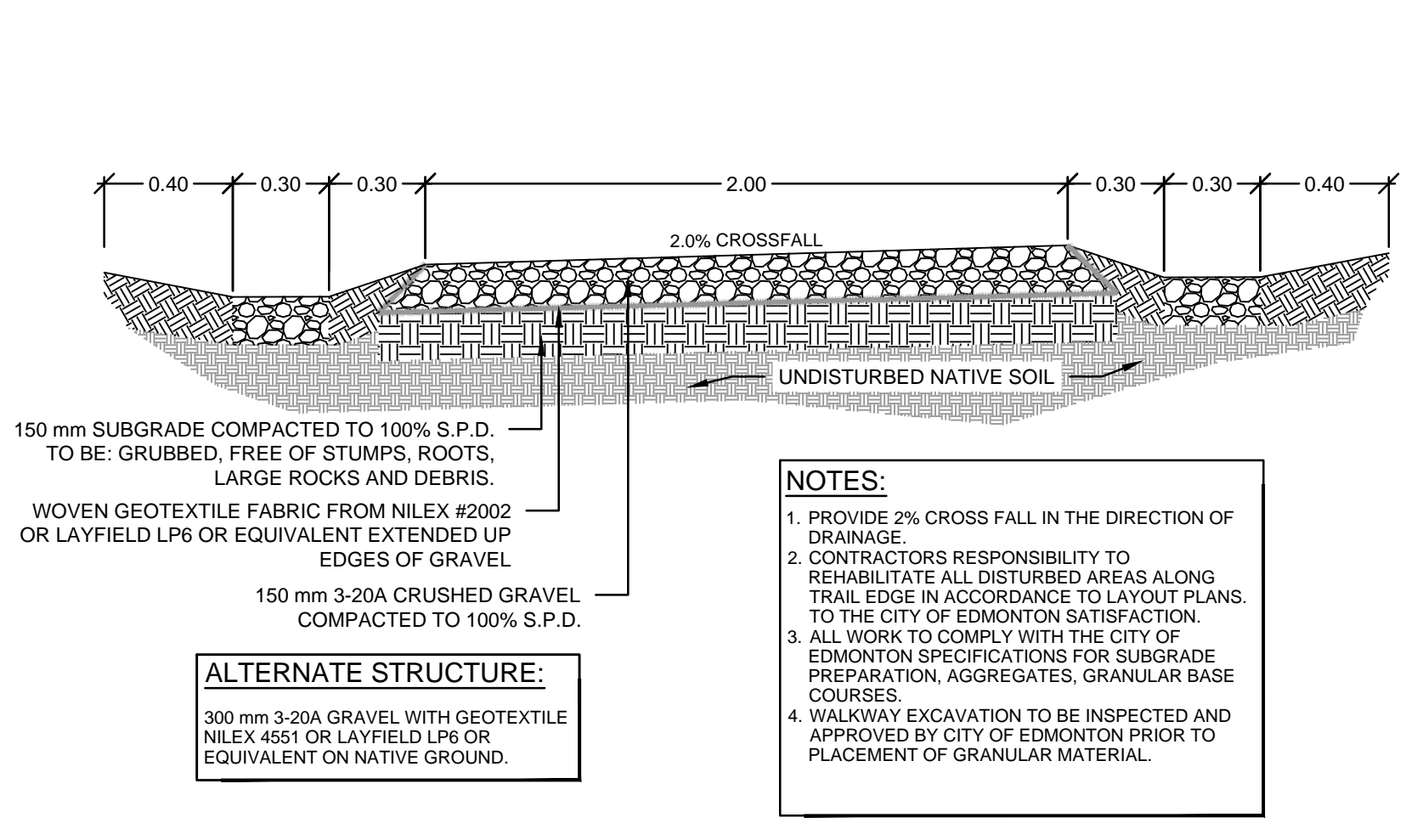
Drawing No.

L001-008

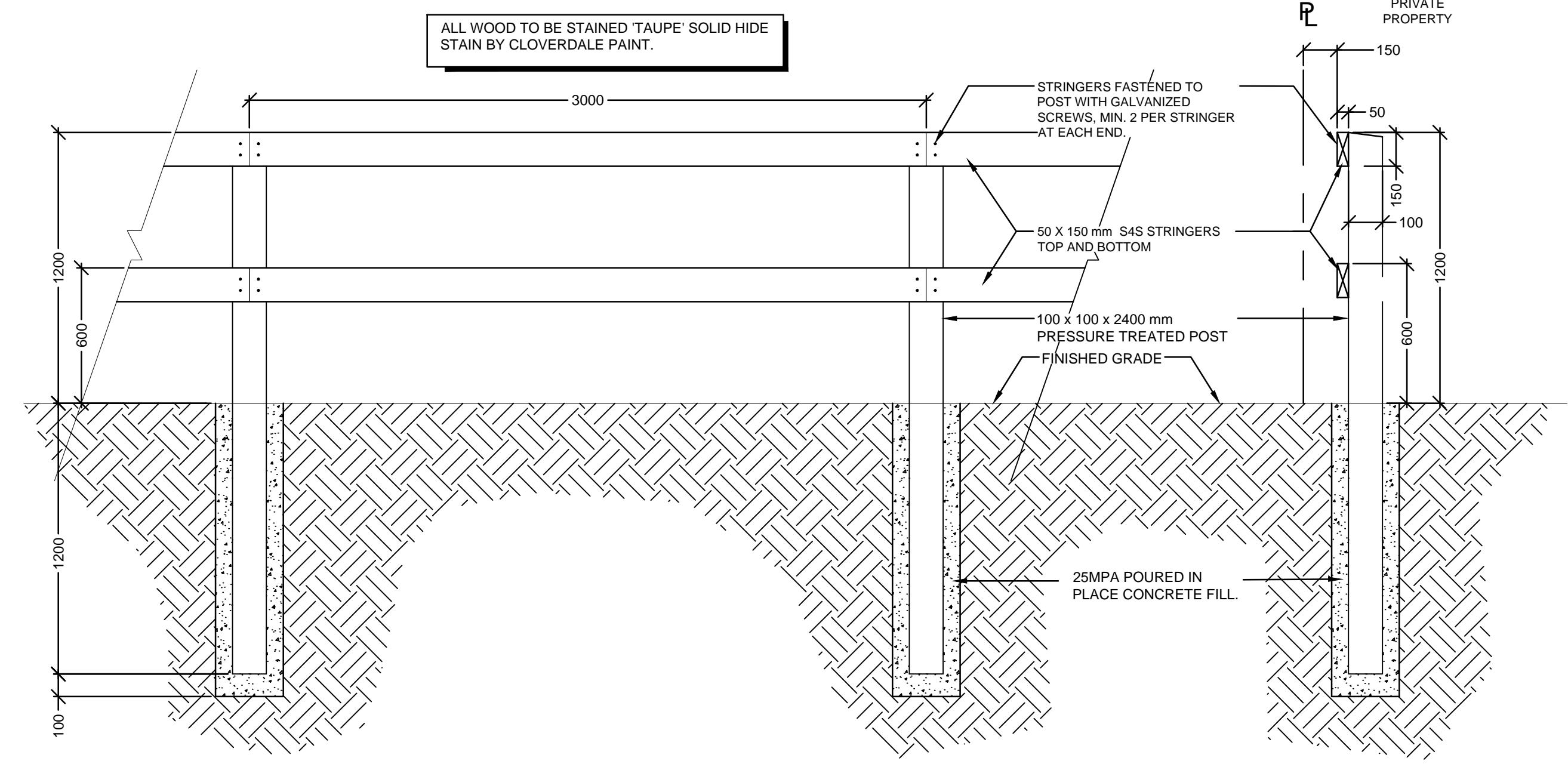
8 of 10



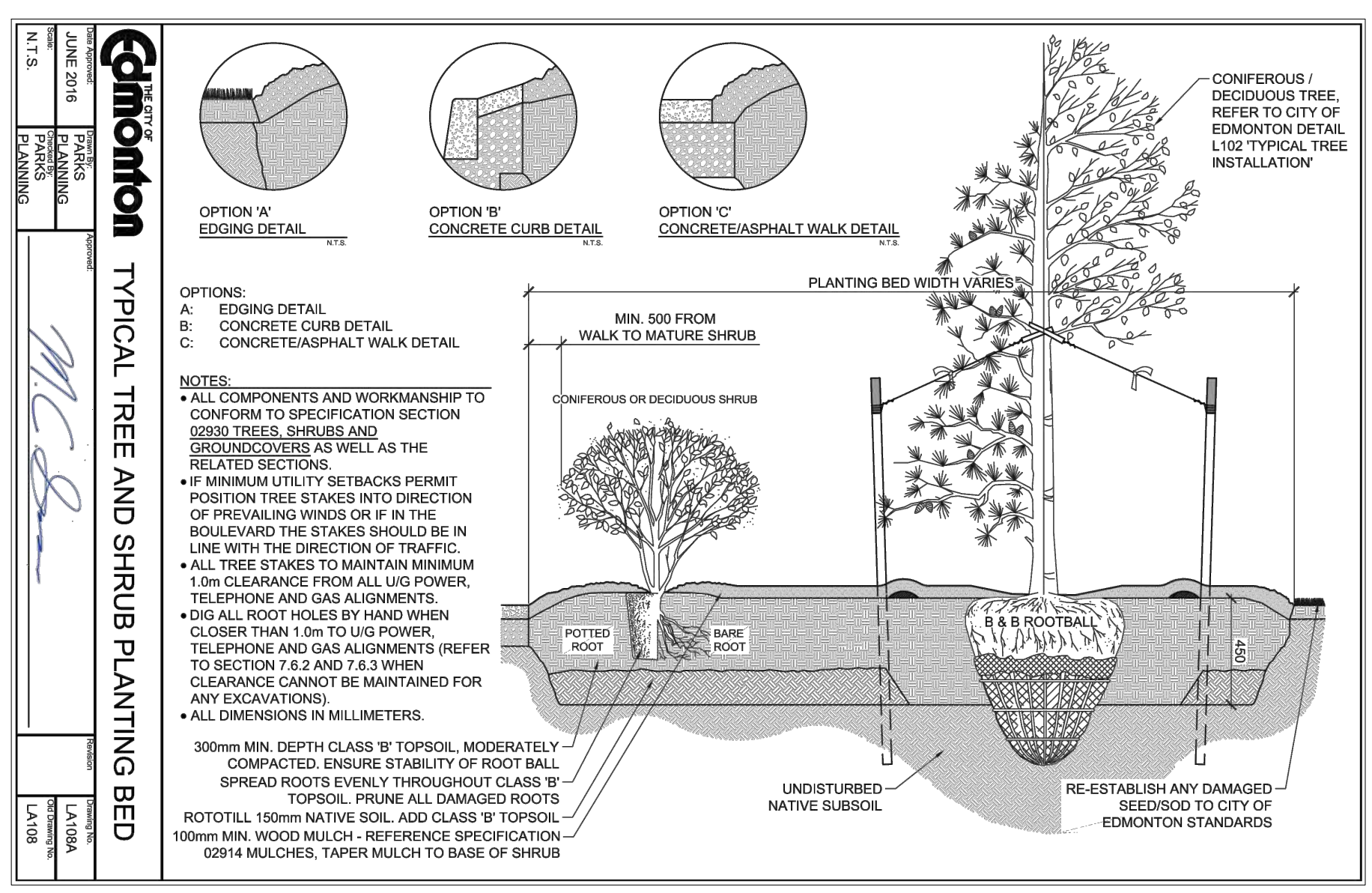
1 GRANULAR TRAIL WITH RETAINING WALL
SCALE: 1:20



2 GRANULAR TRAIL WITH SWALES
SCALE: 1:20



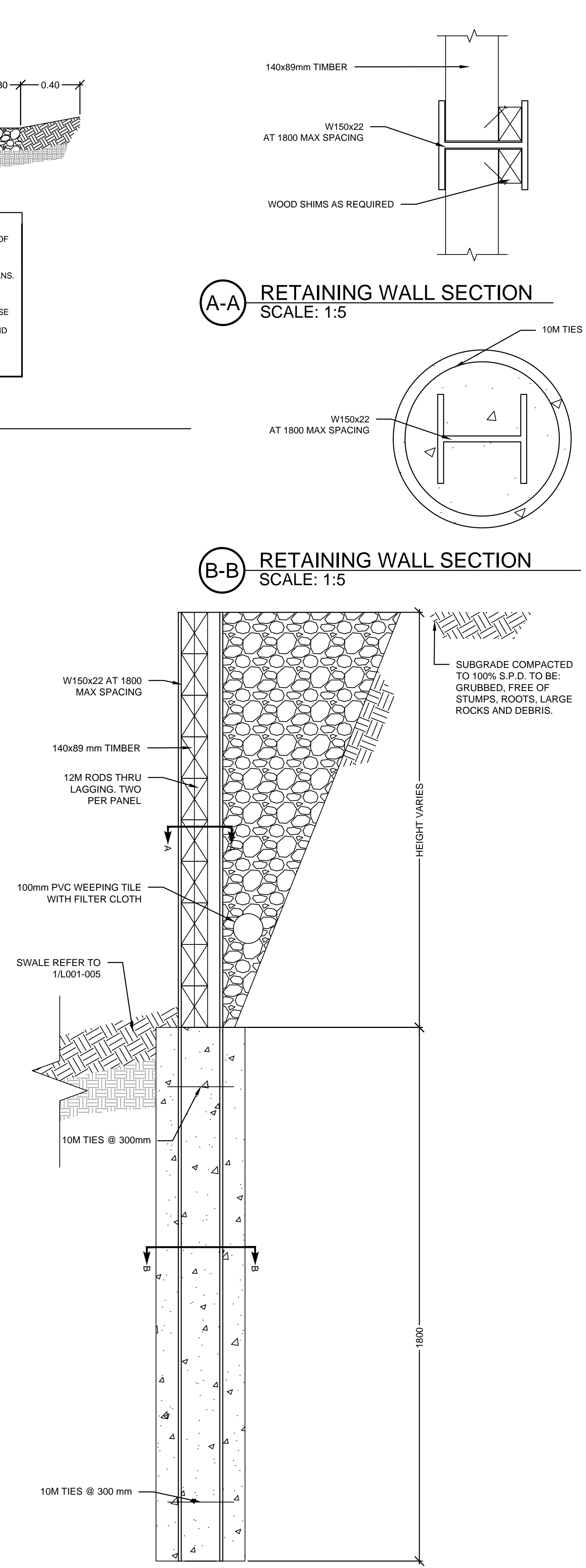
3 1.2m POST AND RAIL FENCE
SCALE: 1:20



4 TYPICAL TREE AND SHRUB PLANTING BED
SCALE: N.T.S.

RETAINING WALL NOTES:

1. WEEPING TILE TO BE 100 mm DIA. PERFORATED POLYVINYL-CHLORIDE PIPE, C/W SOLVENT SEAL COUPLINGS, TEES, ELBOWS, FITTINGS, ETC. FILTER CLOTH TO BE NON-WOVEN POLYESTER SLEEVE EQUAL TO 'TREVIRA SPUNBOND NO.1114' AS SUPPLIED BY ARMTEC CONSTRUCTION PRODUCTS. PLACE FILTER CLOTH AROUND PIPE THE BACKFILL WITH GRANULAR FILL. PITCH PIPE 1/8" TO LOW END OF WALL AND DAYLIGHT.
2. BACKFILL TO BE FREE DRAINING PEA GRAVEL LIGHTLY COMPACTED.
3. DO NOT PROCEED WITH BACKFILLING OPERATIONS UNTIL ENGINEER HAS INSPECTED AND APPROVED INSTALLATIONS.
4. DO CONCRETE FORMWORK, REINFORCEMENT AND CAST-IN-PLACE CONCRETE IN ACCORDANCE WITH CSA A23.1 EXCEPT WHERE SPECIFIED ELSEWHERE.
5. REINFORCED BARS: BILLET STEEL, GRADE 400, DEFORMED BARS TO CAS G30.18-09 EXCEPT BEAM AND COLUMN TIES WHICH SHALL BE GRADE 300.
6. IMMEDIATELY FOLLOWING DRILLING OF THE PILE SHAFTS, AND CLEANING INSTALL WIDE FLANGE POST, REINFORCING STEEL AND PLACE CONCRETE.
7. PROPORTION NORMAL DENSITY CONCRETE TO CSA A23.1 FOR ALL CONCRETE TO GIVE 25 MPa IN 28 DAYS USING TYPE HS CEMENT, 20 mm COARSE AGGREGATE, 75 mm SLUMP, 5 TO 7% ENTRAINED AIR AND A WATER CEMENTING MATERIAL RATIO OF 0.5.
8. STRUCTURAL STEEL TO BE HOT ROLLED SECTIONS TO CAN3 G40.21, 350W.
9. SHOP PAINT PRIMER TO CIS/CPMA 1-73Aa. SHOP PRIME TO CAN/CSA-S16-01 ALL STEEL MEMBERS EXCEPTING SURFACES IN CONTACT WITH CAST AREAS TO RECEIVE WELDING WORK.
10. ALL LUMBER TO BE PRESSURE TREATED SPF NO. 1 & 2, OR BETTER.
11. BOLTS, NUTS, WASHERS, LAGS, PINS, AND SCREWS TO BE HOT DIP GALVANIZED TO CSA G164.
12. WOOD PRESERVATIVE TO BE PENTACHLOROPHENOL BASE WATER REPELLENT WOOD PRESERVATIVE. TREAT CUT ENDS WITH END CUT PRESERVATIVE.



5 RETAINING WALL ELEVATION
SCALE: 1:20

A-A RETAINING WALL SECTION
SCALE: 1:5



Stantec Consulting Ltd.
10160 - 112 Street
Edmonton AB Canada
Tel. 780.917.7000
www.stantec.com

Copyright Reserved

The Contractor shall verify and be responsible for all dimensions. DO NOT scale the drawing - any errors or omissions shall be reported to Stantec without delay. The Copyrights to all designs and drawings are the property of Stantec. Reproduction or use for any purpose other than that authorized by Stantec is forbidden.

Legend

Notes

UTILITY SETBACKS

LANDSCAPE CONTRACTOR TO CALL 'ALBERTA ONE-CALL' AT 1-800-242-3447 TO HAVE ALL EXISTING SITE UTILITIES LOCATED PRIOR TO CONSTRUCTION AND PLANT NO CLOSER THAN THE FOLLOWING DIMENSIONS FROM THE SERVICES:

1. 1.0 m FROM POWER LINES
 2. 3.5 m FROM ALL POWER HARDWARE
 3. 1.8 m FROM WATER MAINS, WATER VALVES, MANUAL AIRVENTS, AND SERVICES
 4. 2.0 m FROM SEWER MAINS, AND MANHOLES
 5. 1.8 m FROM SEWER SERVICES
 6. 1.5 m FROM GAS (NO TREES WITHIN EASEMENT)
 7. 7.5 m FROM STREET CORNERS.
 8. 3.5 m FROM FIRE HYDRANTS.
 9. 1.5 m FROM DRIVEWAYS
 10. 1.5 m FROM ALLEY ACCESSES
 11. 1.0 m FROM SIDEWALKS
- OR AS PER APPROVED ENG. CROSS SECTIONS
12. 3.5 m FROM TRANSIT ZONES
 13. 3.0 m FROM PRIVATE PROPERTY BOUNDARY
 14. 1.25 m FROM COLLECTOR ROAD CURB FACE
 15. 1.25 m FROM LOCAL ROAD CURB FACE
 16. 2.0 m FROM ARTERIAL ROAD CURB FACE
 17. 3.5 m FROM YIELD AND STOP SIGNS
 18. 3.5 m FROM BUS STOP SIGNS
 19. 2.0 m FROM ALL OTHER SIGNS
 20. 1.0 m FROM OTHER UNDERGROUND UTILITIES
 21. 3.5 m FROM TELUS PEDESTALS
 22. 2.0 m FROM TELUS DUCT STRUCTURE
 23. 1.0 m FROM TELUS CABLE FACILITIES

LANDSCAPE CONTRACTOR IS RESPONSIBLE FOR DAMAGES AND LIABILITIES INCURRED BY DAMAGES TO SITE UTILITIES.

Development Engineer, Sustainable Development			
Approvals			YY.MM.DD
Revision	By	Appd.	YY.MM.DD
1. FIRST SUBMISSION (60%)	DW	NGS	18.05
Issued	By	Appd.	YY.MM
File Name: LA_MCreek.dwg	DW	CB	NGS
	Dwn.	Chkd.	Dsgn.
			YY.MM.DD

Permit-Seal



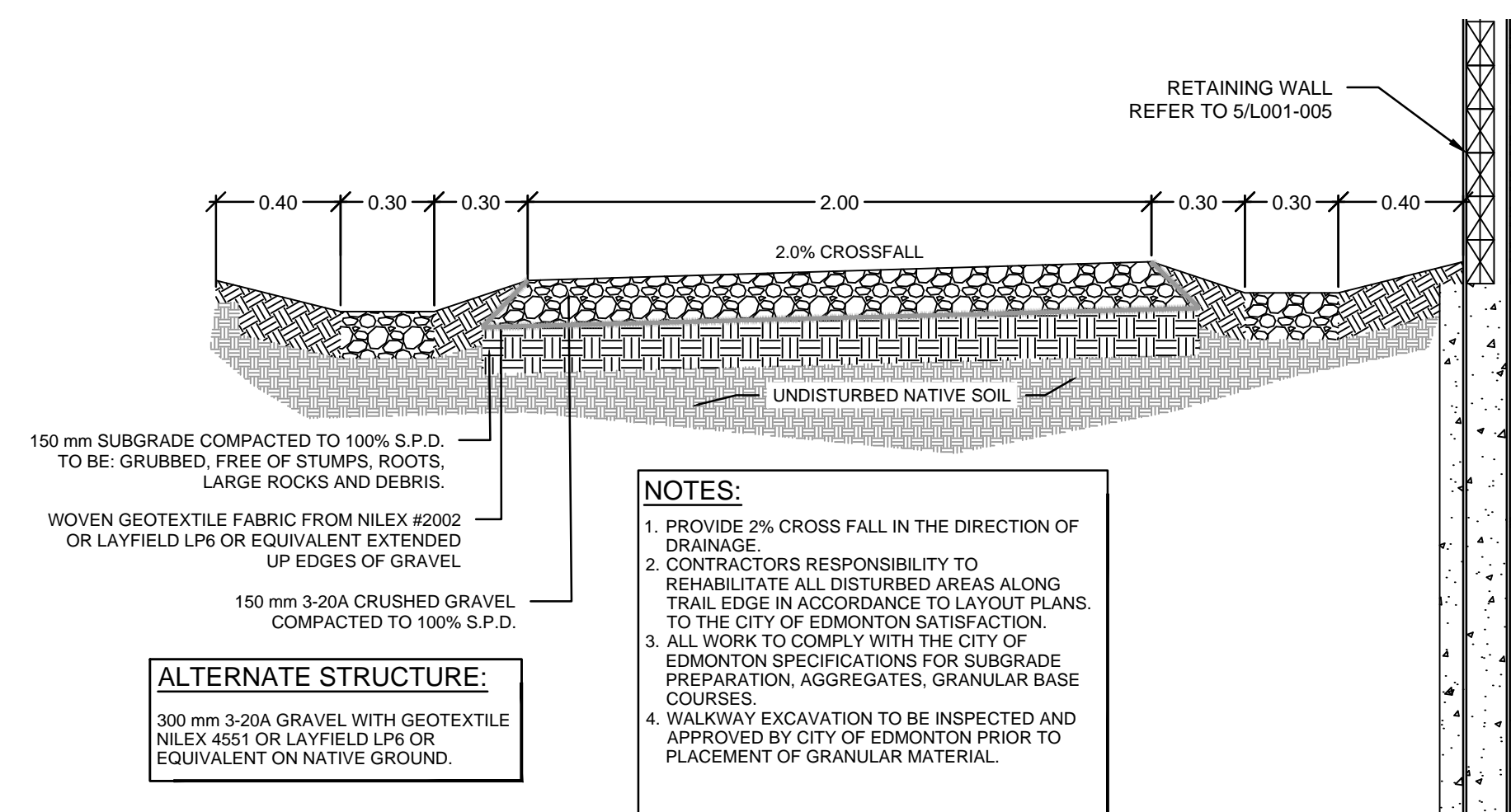
Natalie Goulet-Sorenson

Client/Project
CITY OF EDMONTON

MILL CREEK RAVINE PARK
TRAIL REHABILITATION
Edmonton, Alberta

Title
DETAILS

Project No. 1161106255 Scale AS SHOWN



1 GRANULAR TRAIL WITH RETAINING WALL
SCALE: 1:20



Stantec Consulting Ltd.
10160 - 112 Street
Edmonton AB Canada
Tel. 780.917.7000
www.stantec.com

Copyright Reserved

The Contractor shall verify and be responsible for all dimensions. DO NOT scale the drawing - any errors or omissions shall be reported to Stantec without delay. The Copyrights to all designs and drawings are the property of Stantec. Reproduction or use for any purpose other than that authorized by Stantec is forbidden.

Legend

Notes

UTILITY SETBACKS

LANDSCAPE CONTRACTOR TO CALL 'ALBERTA ONE-CALL' AT 1-800-242-3447 TO HAVE ALL EXISTING SITE UTILITIES LOCATED PRIOR TO CONSTRUCTION AND PLANT NO CLOSER THAN THE FOLLOWING DIMENSIONS FROM THE SERVICES:

1. 1.0 m FROM POWER LINES
2. 3.5 m FROM ALL POWER HARDWARE
3. 1.8 m FROM WATER MAINS, WATER VALVES, MANUAL AIRVENTS, AND SERVICES
4. 2.0 m FROM SEWER MAINS, AND MANHOLES
5. 1.8 m FROM SEWER SERVICES
6. 1.5 m FROM GAS (NO TREES WITHIN EASEMENT)
7. 7.5 m FROM STREET CORNERS.
8. 3.5 m FROM FIRE HYDRANTS.
9. 1.5 m FROM DRIVEWAYS
10. 1.5 m FROM ALLEY ACCESSSES
11. 1.0 m FROM SIDEWALKS
- OR AS PER APPROVED ENG. CROSS SECTIONS
12. 3.5 m FROM TRANSIT ZONES
13. 3.0 m FROM PRIVATE PROPERTY BOUNDARY
14. 1.25 m FROM COLLECTOR ROAD CURB FACE
15. 1.25 m FROM LOCAL ROAD CURB FACE
16. 2.0 m FROM ARTERIAL ROAD CURB FACE
17. 3.5 m FROM YIELD AND STOP SIGNS
18. 3.5 m FROM BUS STOP SIGNS
19. 2.0 m FROM ALL OTHER SIGNS
20. 1.0 m FROM OTHER UNDERGROUND UTILITIES
21. 3.5 m FROM TELUS PEDESTALS
22. 2.0 m FROM TELUS DUCT STRUCTURE
23. 1.0 m FROM TELUS CABLE FACILITIES

LANDSCAPE CONTRACTOR IS RESPONSIBLE FOR DAMAGES AND LIABILITIES INCURRED BY DAMAGES TO SITE UTILITIES.

Development Engineer, Sustainable Development				
Approvals				YY.MM.DD
Revision	By	Appd.		YY.MM.DD
1. FIRST SUBMISSION (60%)	DW	NGS		18.05
Issued	By	Appd.		YY.MM
File Name: LA_MCreek.dwg	DW	CB	NGS	18.03.13
	Dwn.	Chkd.	Dsgn.	YY.MM.DD

Permit-Seal



Client/Project

CITY OF EDMONTON

MILL CREEK RAVINE PARK
TRAIL REHABILITATION

Edmonton, Alberta

Title

DETAILS

Project No.

1161106255

Scale

AS SHOWN

V:\1161\active\1161106255\drawing_Landscape\LA_MCreek.dwg

2019-3-18 2:03pm BY: DWIGLSEWORTH

Drawing No.

L001-010

10 of 10