



Financial and Corporate Services

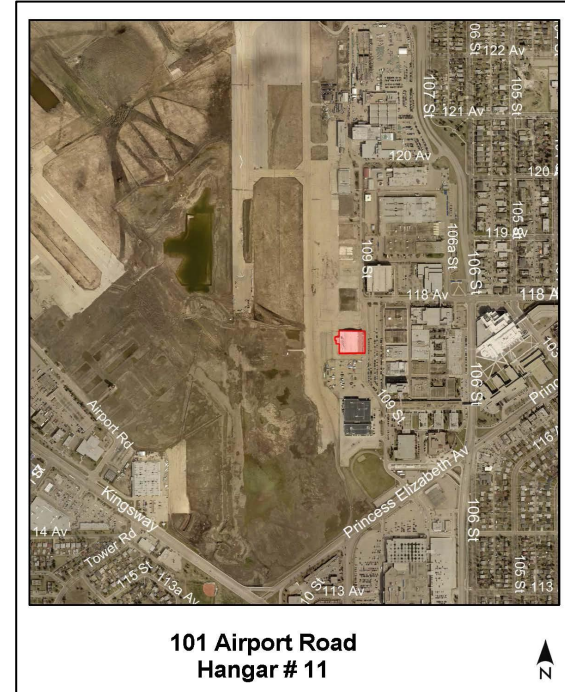
**Exploration of Uses, Condition and
Partner Funding for Hangar 11
Located at Blatchford**

Edmonton

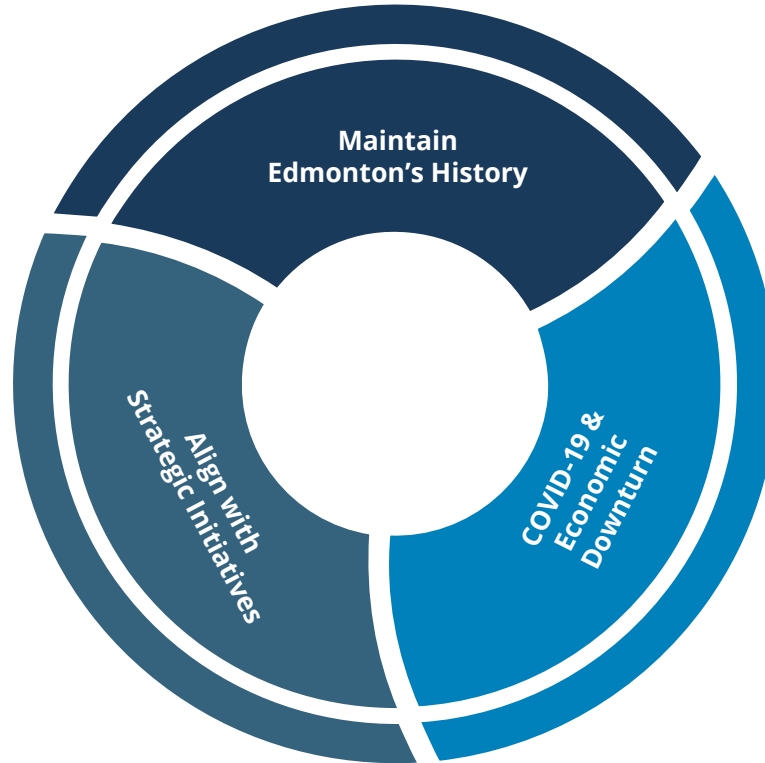
Executive Committee
February 1, 2021

History

- Hangar 11 is a WWII-era airplane hangar included in the Inventory of Historic Resources
- Within 500 acre Blatchford redevelopment
- Stakeholder engagement & functional use analysis is complete
- Requires extensive rehabilitation & capital expenditure between \$18 to \$83 million



Impactful Considerations



Options

Option	Key Factors	Recommendation
1 - Retain & Invest	→ \$18 to \$83 Million → Likely requires tenant	
2 - Sell & Designate	→ Negotiate existing offer → Protect historic designation	✓
3 - Public Offering	→ May not include historic preservation → Extended sale period	

Thank you

Executive Committee
February 1, 2021

The logo for the City of Edmonton, featuring the word "Edmonton" in white text on a dark blue square background.

Edmonton