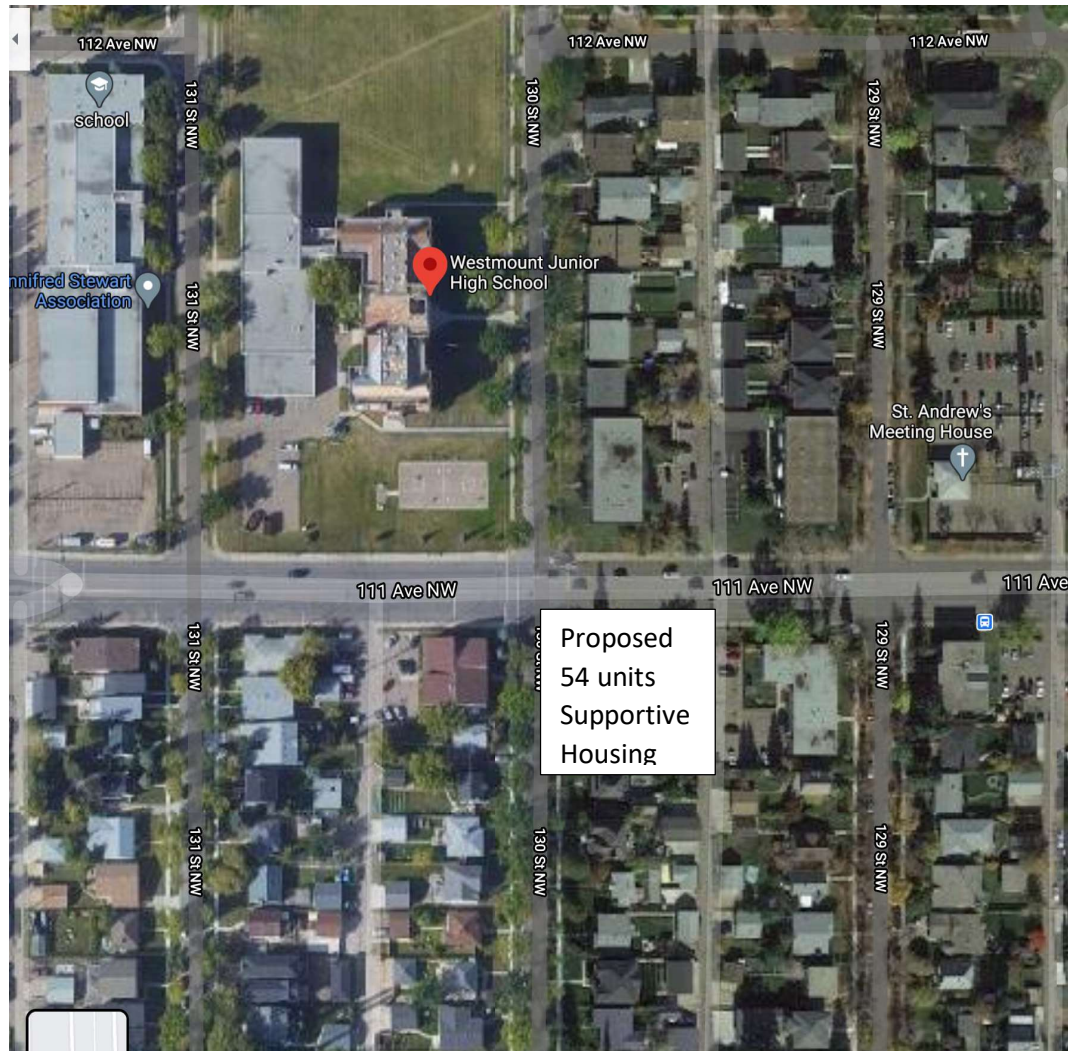
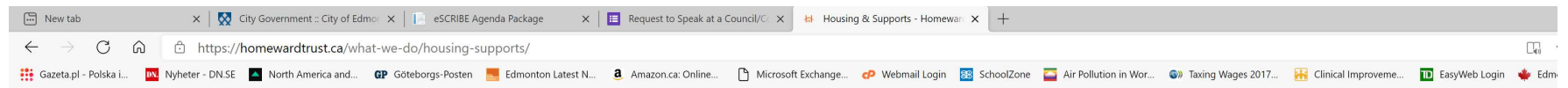


Proposed location of the Supportive Housing in relation to Westmount Junior High School



Westmount Supportive Housing has the **largest number of units** of projects listed at [Supportive Housing :: City of Edmonton](#)

Homeward Trust opinion on concentrating participants in buildings



About Homelessness About Us **What We Do** What We've Learned News & Events Get Involved Help & Resources

least six months to make sure they are maintaining housing stability.

Landlord Relations

Landlords play a vital role in Homeward Trust's goal to end homelessness as more than 80% of people in Housing First programs live in market rental units. Renting units across the city—as opposed to concentrating participants in certain neighbourhoods or buildings—is proven to provide significantly better outcomes for both program participants and communities. Homeward Trust's Landlord Relations team supports the success of the Housing First program by working with landlords to answer questions, address issues, and maintain positive relationships.

Rental Assistance Program

Homeward Trust helps Housing First clients who face barriers or difficulties in paying their own rent in market rental units. The program offers a subsidy that is paired alongside the client's income support or employment income to ensure their rent is paid in full each month and that their housing stability is not at risk due to late or insufficient funds. The intent of the subsidy is to provide financial assistance until the client reaches financial independence or becomes accepted in the CRHC (Capital Region Housing Corporation) subsidy program, which is a long-term and permanent subsidy program.

Summary:

- The proposed Supportive Housing in Westmount is located right across the school
- It has the largest concentration of supportive units listed currently at Edmonton.ca
- Although Homeward Trust will screen the program participants living in Westmount to ensure their fit to the community, they will not be able to do the same for guests and partners of their clients
- Based on Homeward Trust own opinion, concentrating the participants in one building will have **significantly worse outcome for both program participants and the community**

Reason for opposition:

In the large city like Edmonton, there must be a less risky solution than concentrating a large number of supportive units right next to a school as neither the City nor Homeward Trust can guarantee that some of the residents and/or their guests will not interact negatively with the school children. All it takes to kill a child is a bag of fentanyl left at the school yard