

Bylaw 19468

Closure of Vehicular Access to Titled Parcels for the
Yellowhead Trail Freeway Conversion Program

WHEREAS the Municipal Council of the City of Edmonton may pass a Bylaw pursuant to Section 28 of the *Highways Development and Protection Act*, S.A. 2004, c. H-8.5 for the purpose of removing any access to a controlled street; and

WHEREAS City Council has considered the proposed closing and has agreed that it is in the public interest to pass this Bylaw;

NOW THEREFORE the Municipal Council of the City of Edmonton, duly assembled, enacts as follows:

1. All means of access to or from a controlled street generally as illustrated on the attached Schedules "A1" to "A15", are hereby closed.
2. This bylaw comes into force on April 1, 2021.

READ a first time this	25th	day of	January	, A. D. 2021;
READ a second time this	25th	day of	January	, A. D. 2021;
READ a third time this	25th	day of	January	, A. D. 2021;
SIGNED and PASSED this	25th	day of	January	, A. D. 2021.

THE CITY OF EDMONTON

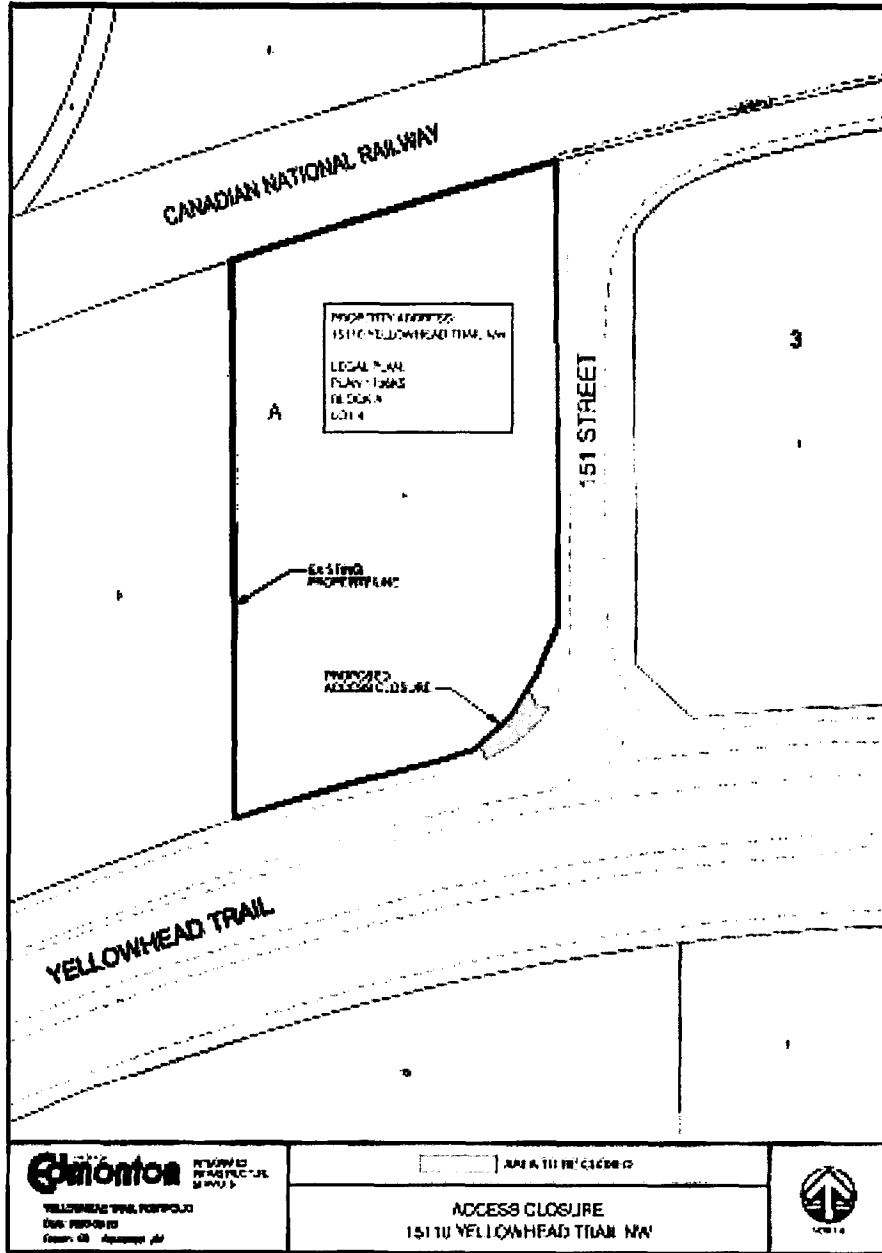


MAYOR

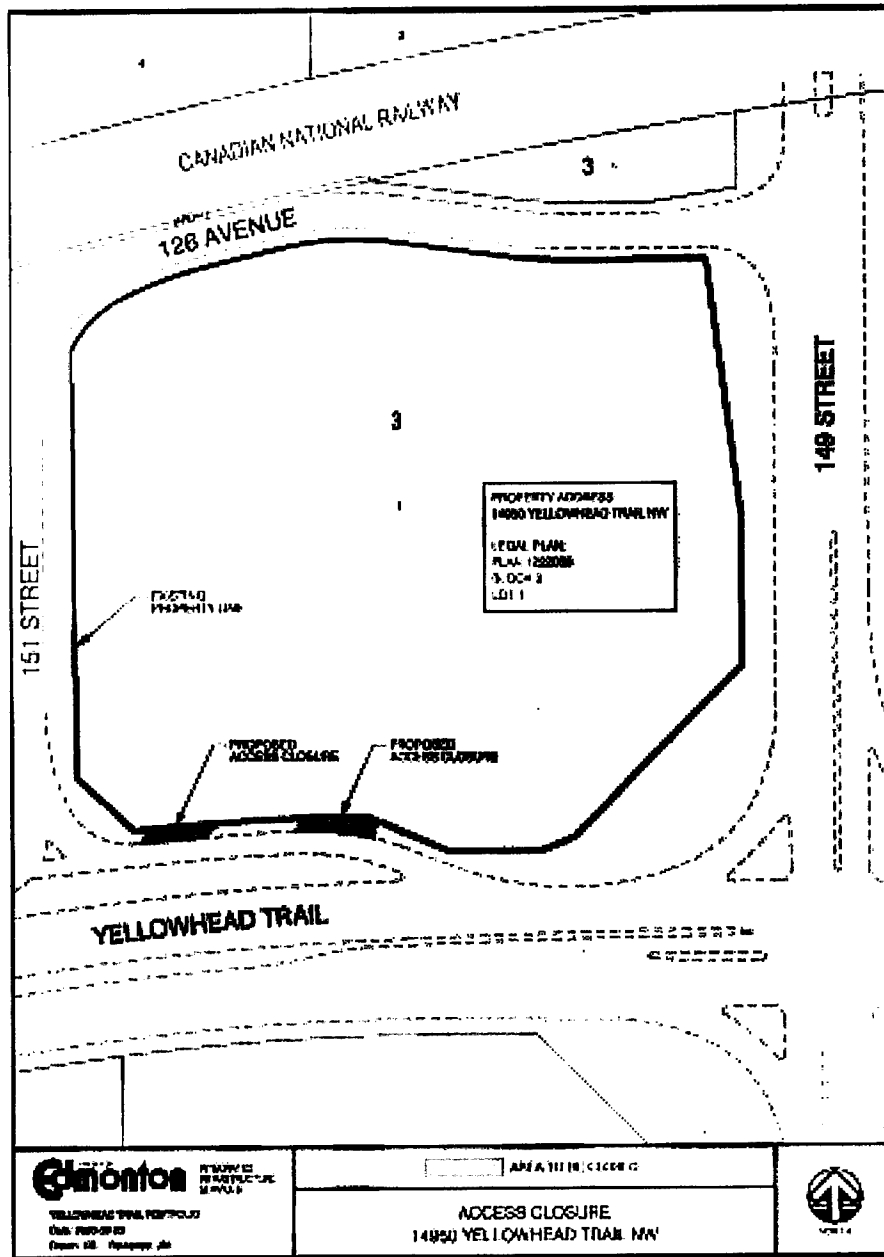


CITY CLERK

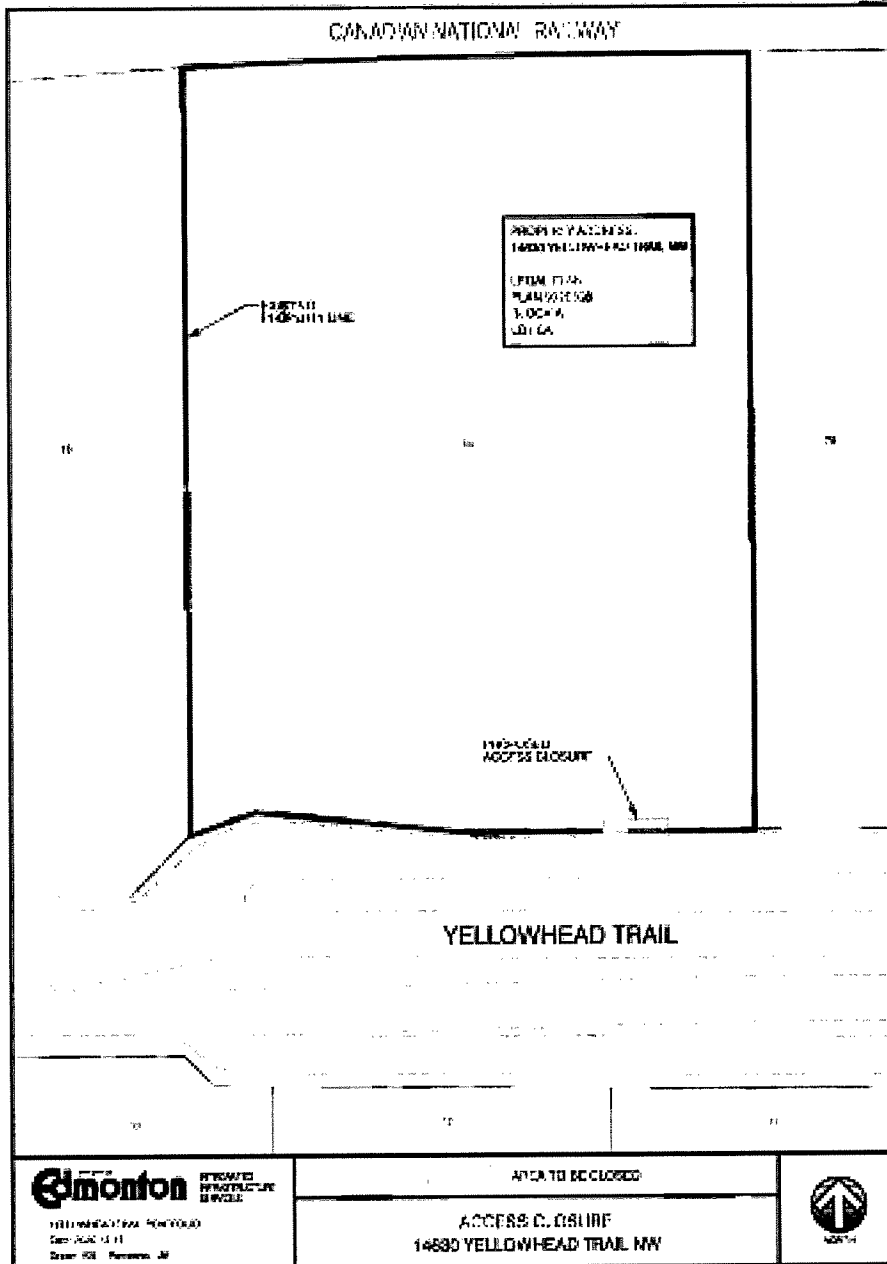
SCHEDULE "A1" TO BYLAW 19468



SCHEDULE "A2" TO BYLAW 19468



SCHEDULE "A3" TO BYLAW 19468

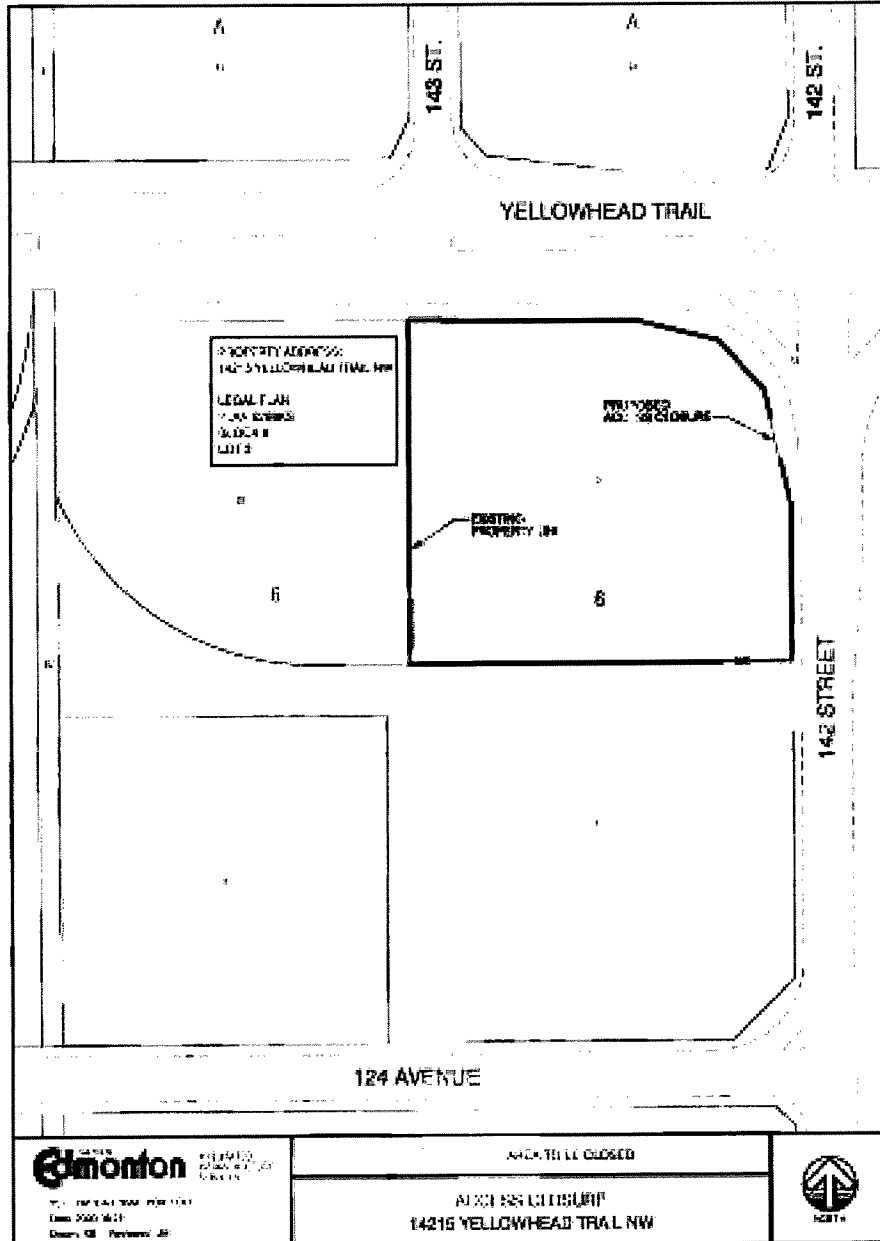


Edmonton PRESERVED INFRASTRUCTURE SERVICES
 YELLOWHEAD TRAIL HOV/ROAD
 500-754-5111
 2000-1000-1000-1000

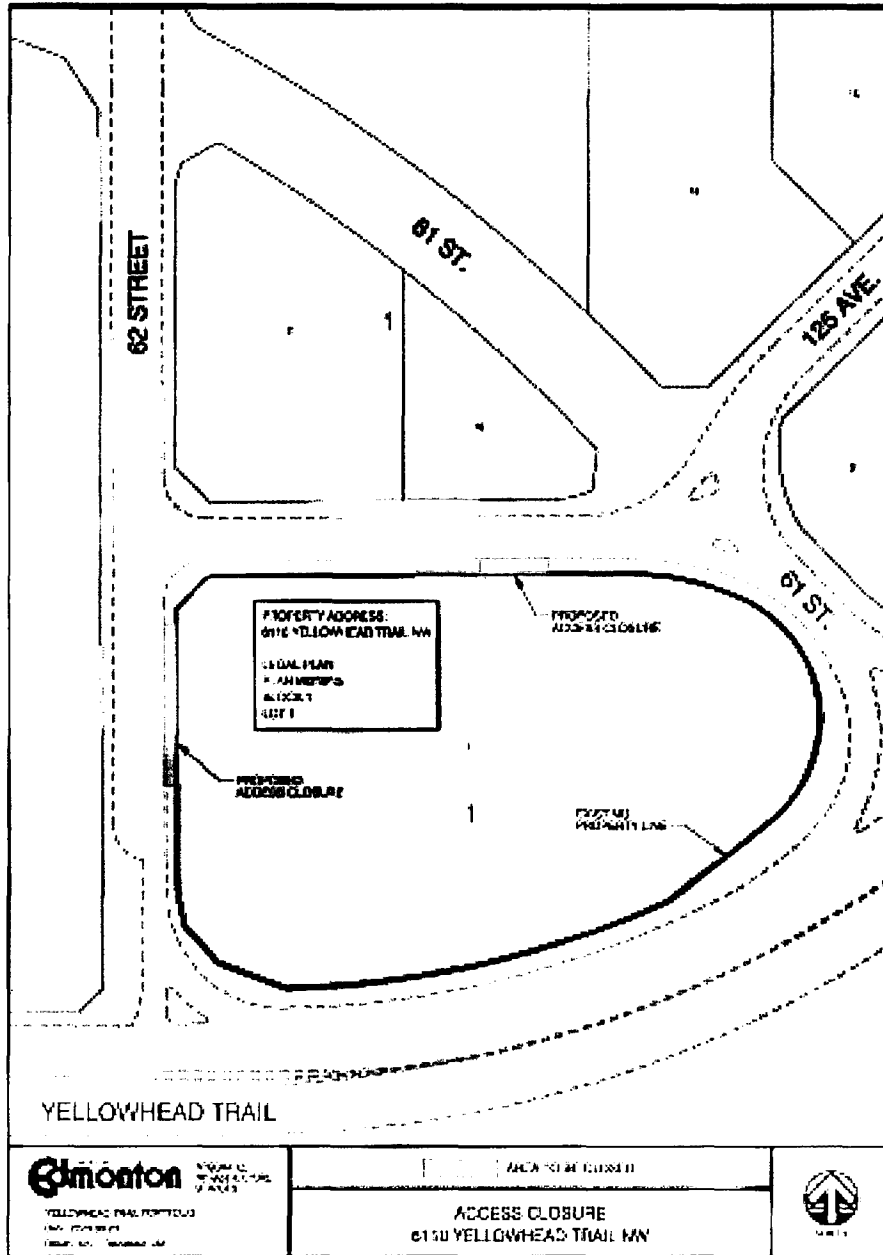
AREA TO BE CLOSED
 ACCESS ENCLOSURE
 14830 YELLOWHEAD TRAIL NW



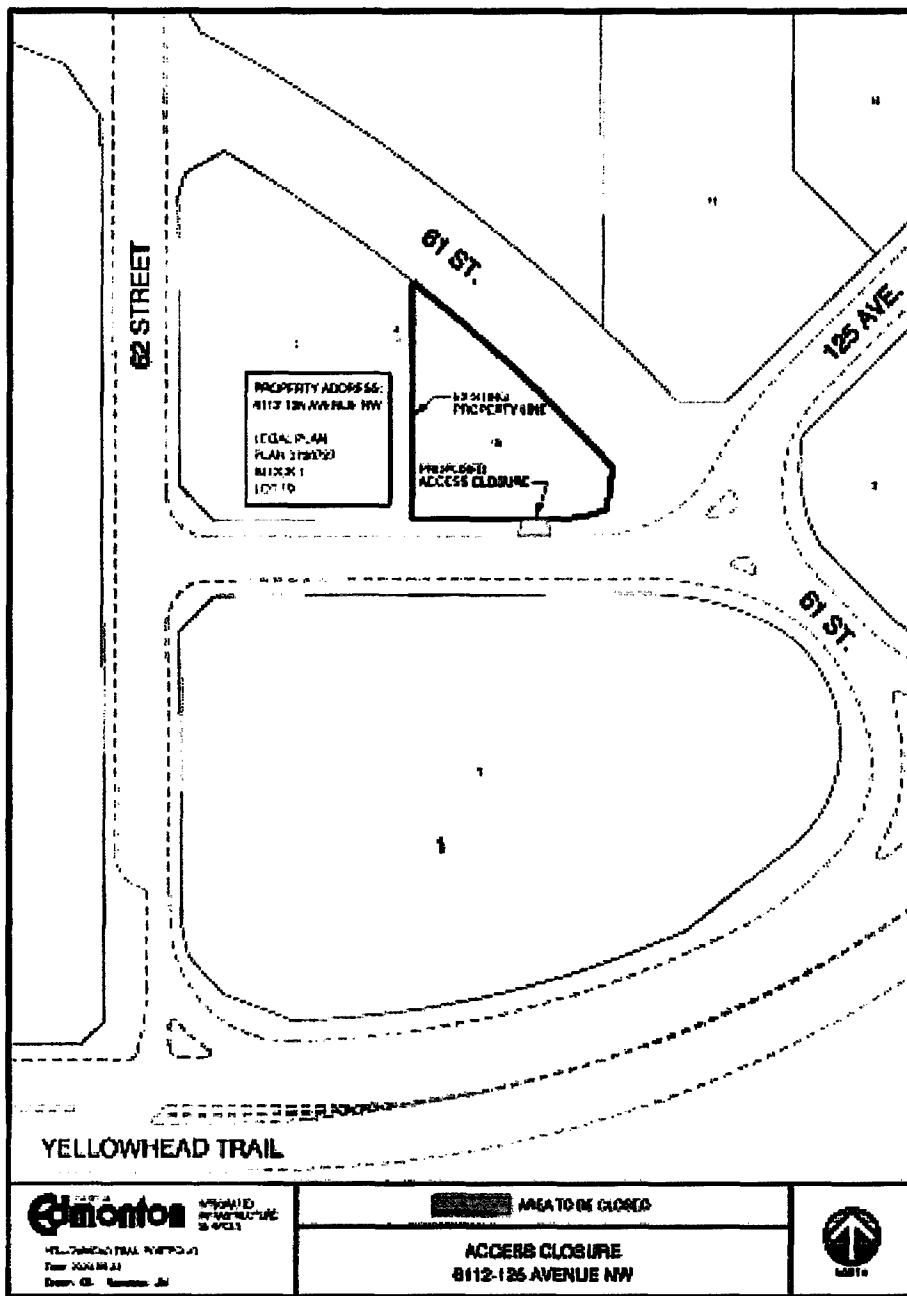
SCHEDULE "A4" TO BYLAW 19468



SCHEDULE "A5" TO BYLAW 19468



SCHEDULE "A6" TO BYLAW 19468

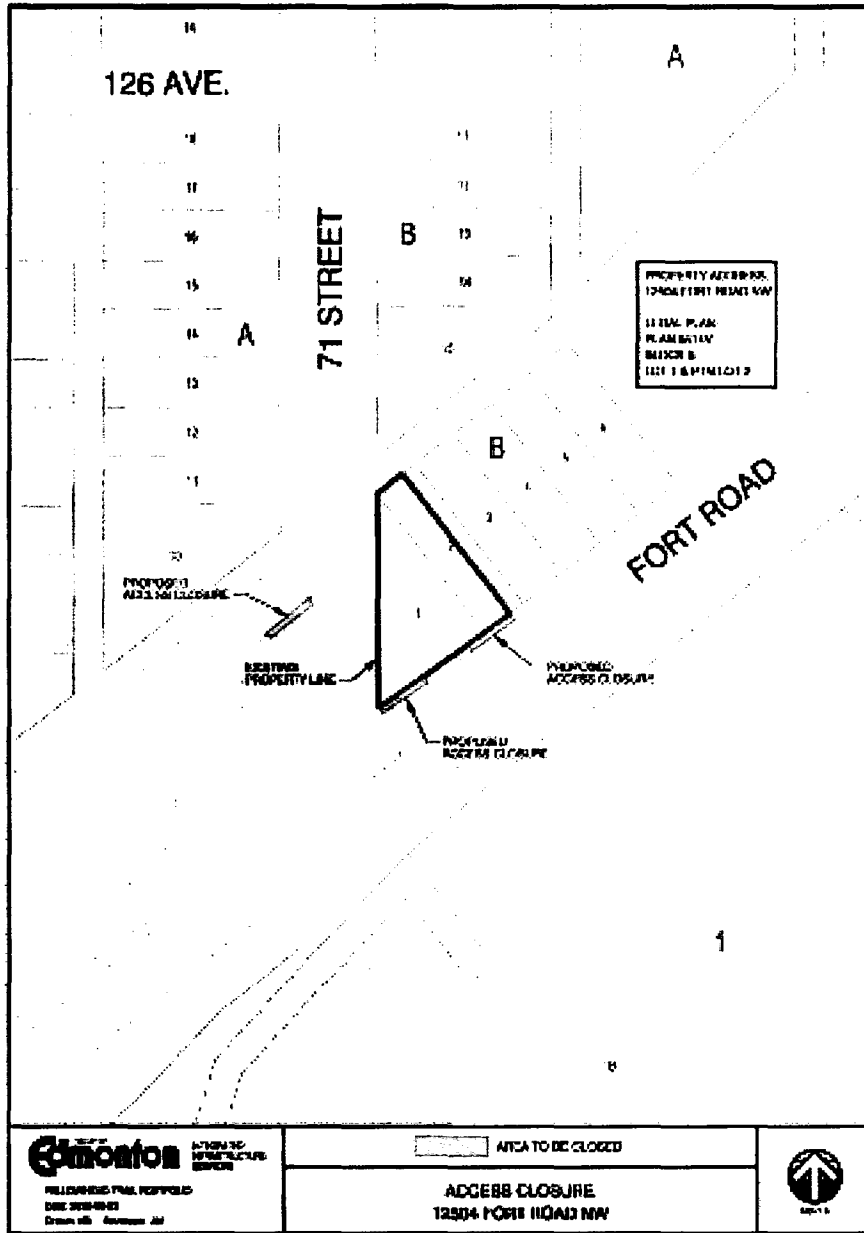


City of Edmonton
APPROVED
STRUCTURE
SCHEDULE
YELLOWHEAD TRAIL
PLAN 124022
BLOCK 1
LOT 10

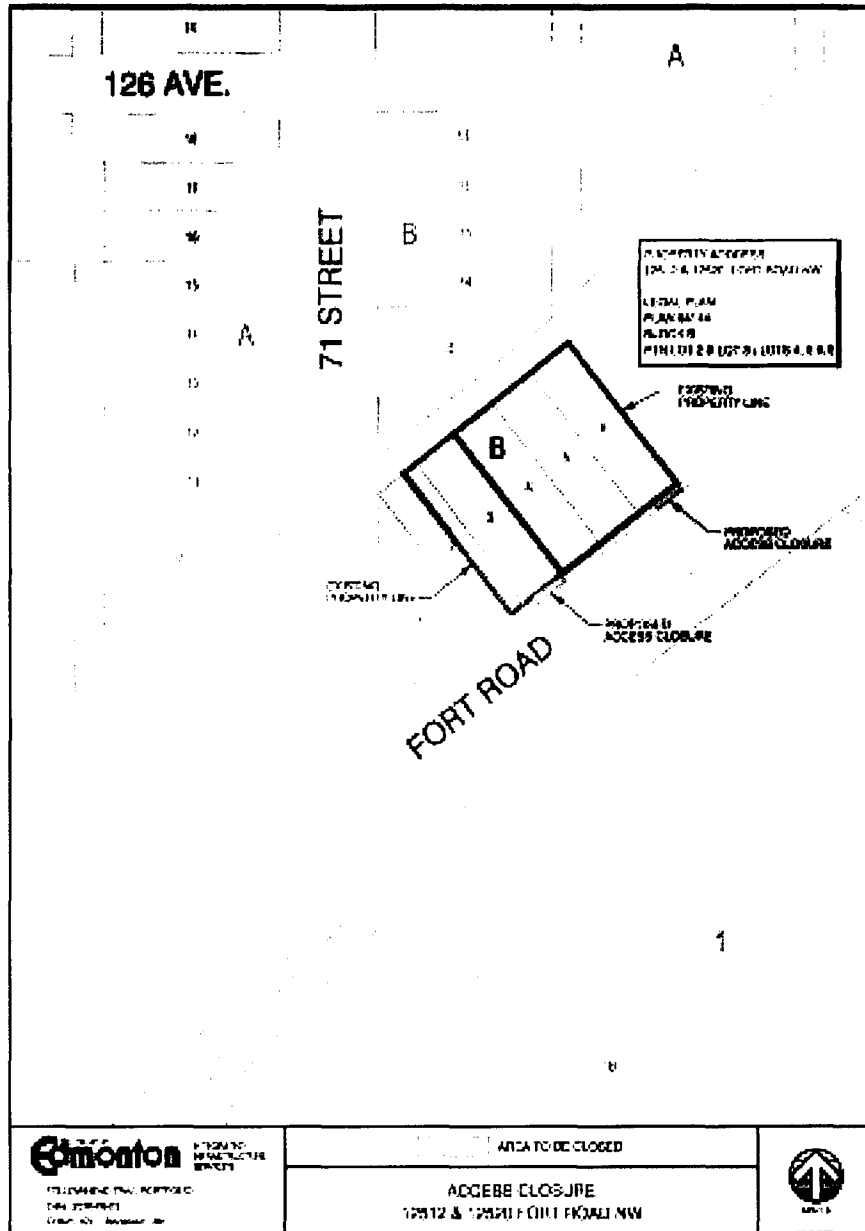
AREA TO BE CLOSED
ACCESS CLOSURE
8112-125 AVENUE NW



SCHEDULE "A7" TO BYLAW 19468



SCHEDULE "A8" TO BYLAW 19468

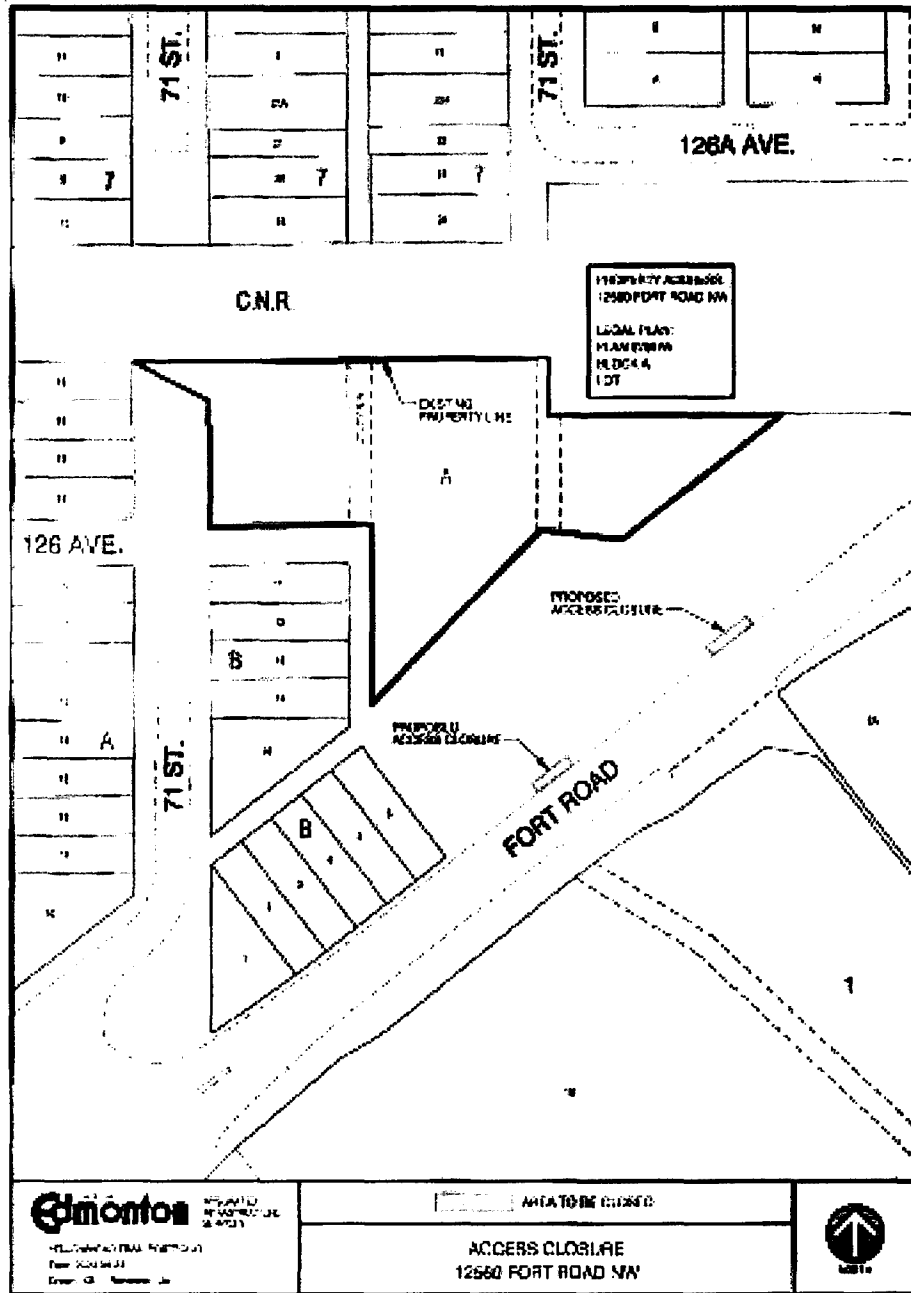


City of Edmonton
 Planning and Development
 Division
 12812 & 12820 FORT ROAD NW
 Edmonton, Alberta T5A 0R8

AREA TO BE CLOSED
 ACCESS CLOSURE
 12812 & 12820 FORT ROAD NW



SCHEDULE "A9" TO BYLAW 19468

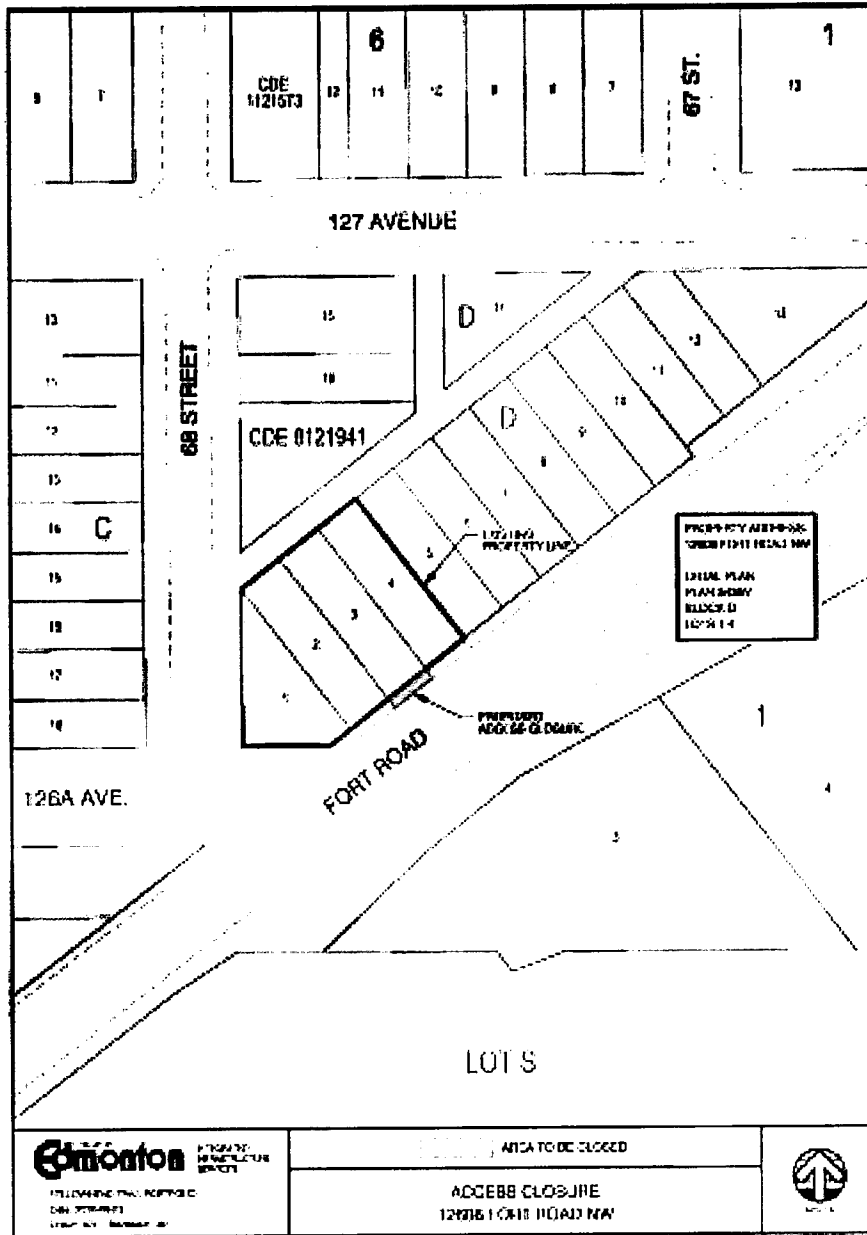


City of Edmonton
 Planning Department
 10000 104 Avenue NW
 Edmonton, Alberta T6C 2E3

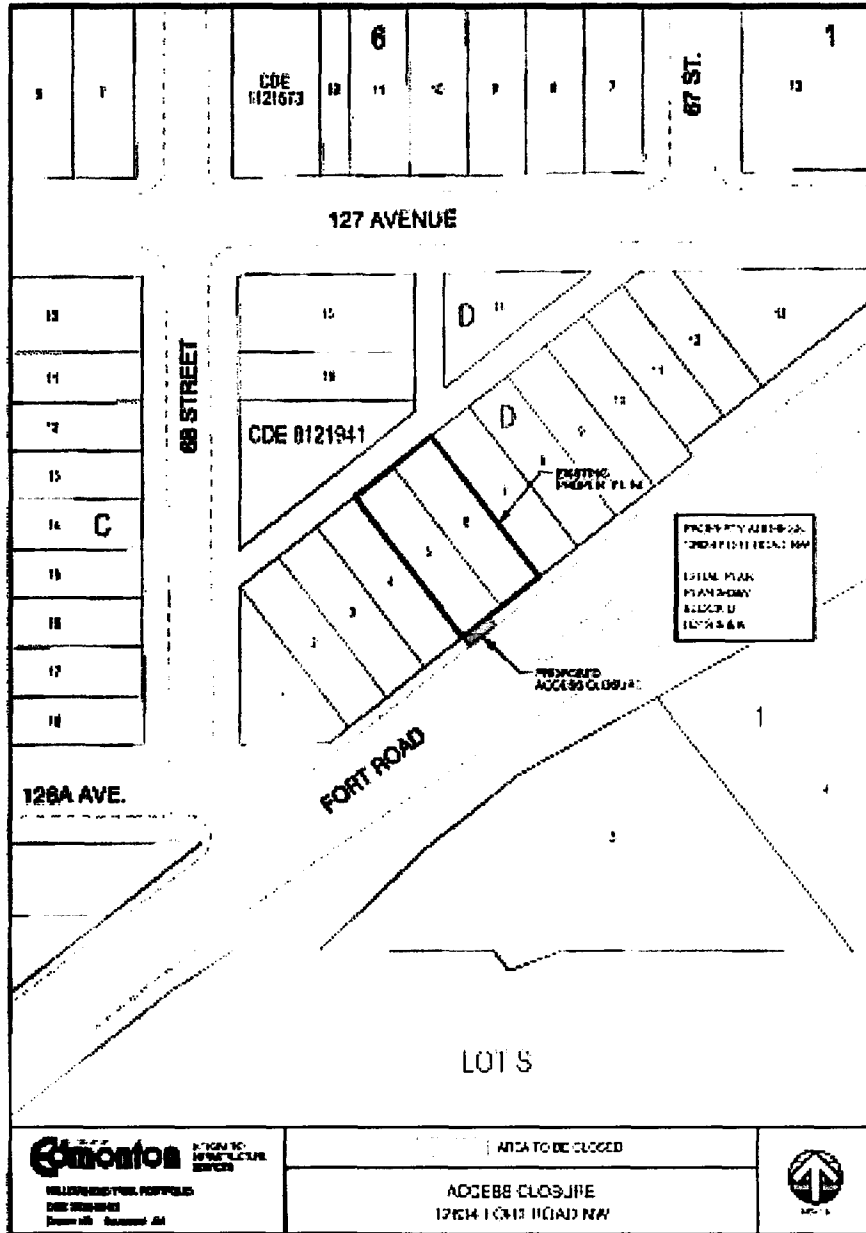
AREA TO BE CLOSED
 ACCESS CLOSURE
 12560 FORT ROAD NW



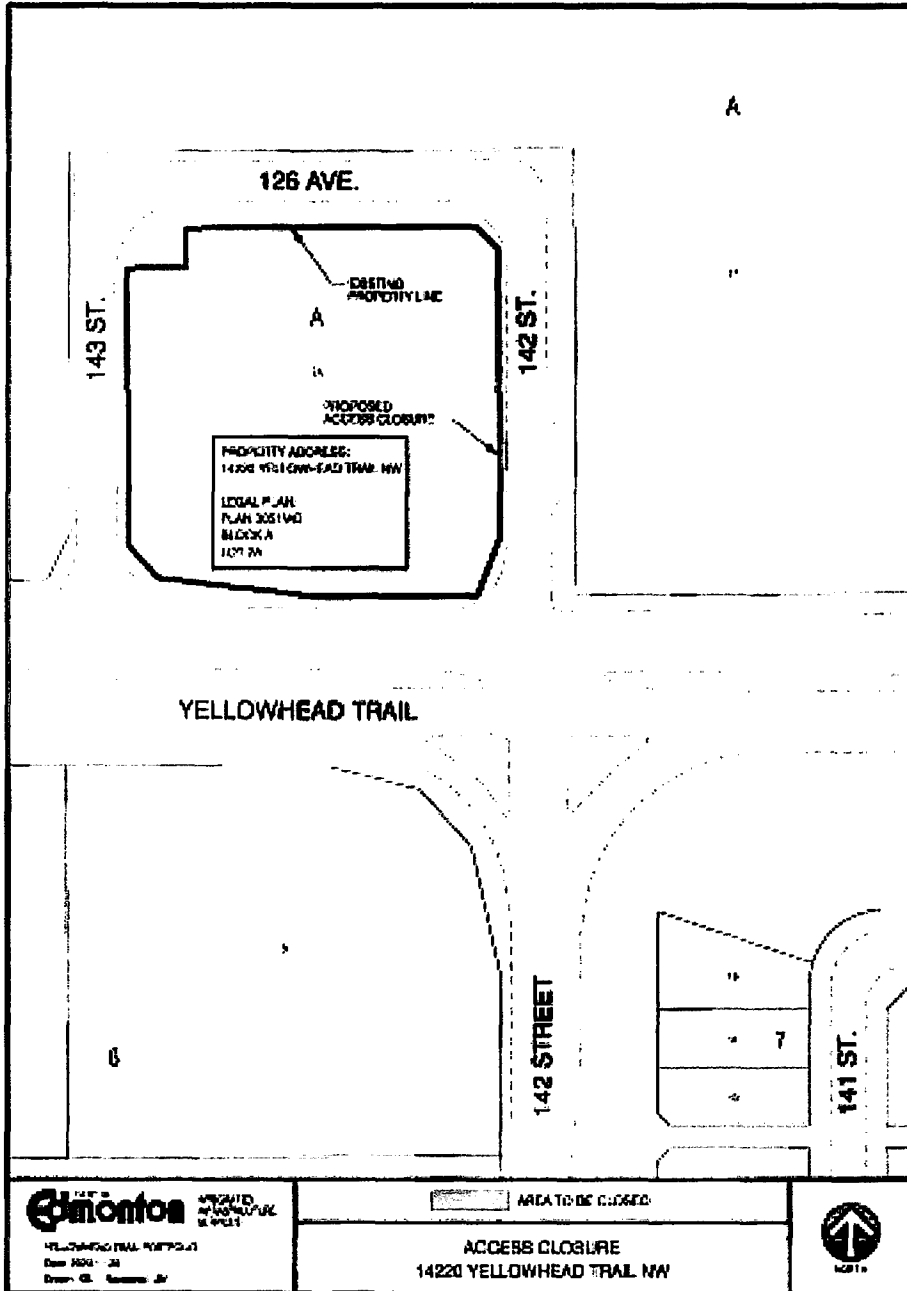
SCHEDULE "A10" TO BYLAW 19468



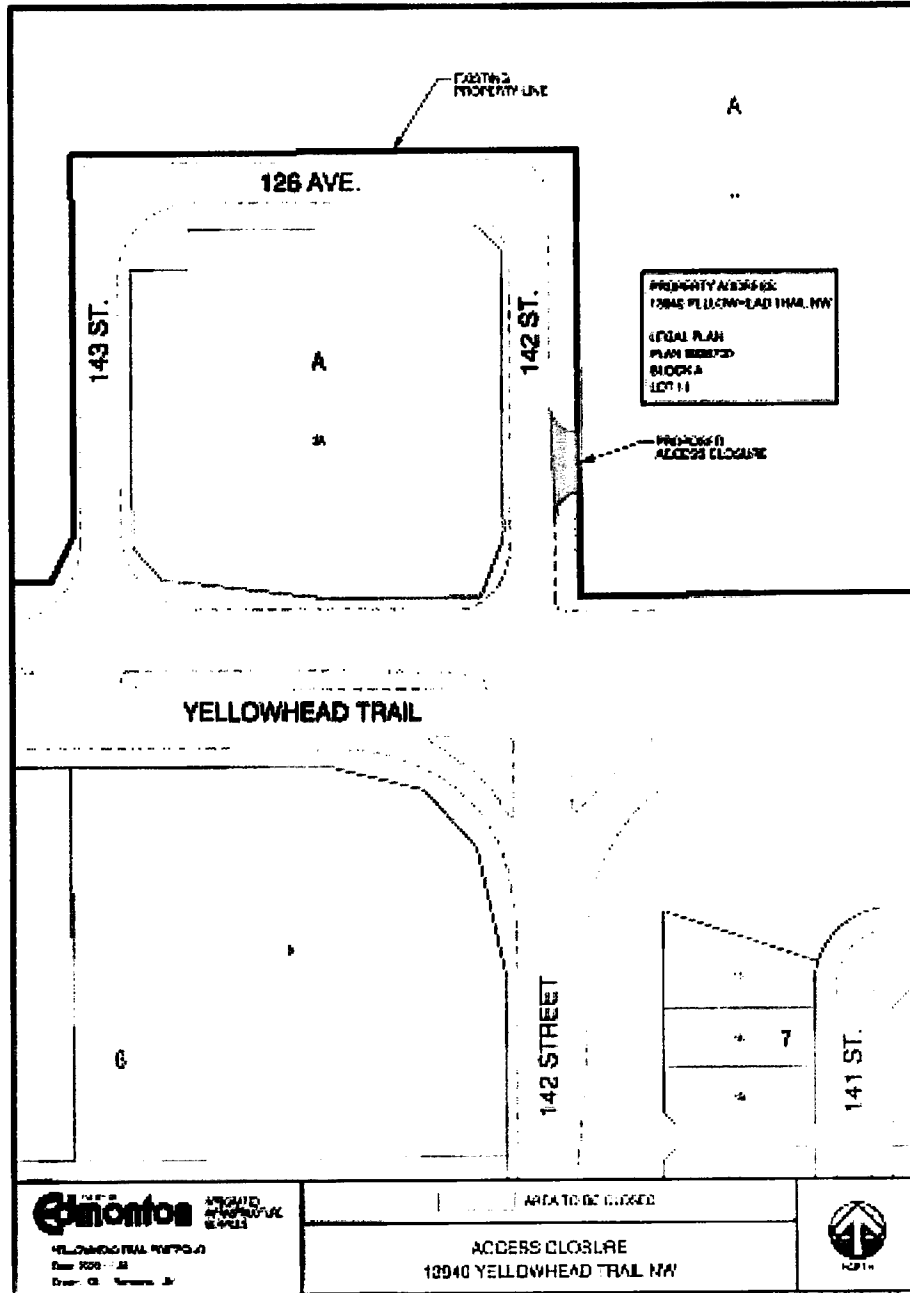
SCHEDULE "A11" TO BYLAW 19468



SCHEDULE "A12" TO BYLAW 19468



SCHEDULE "A13" TO BYLAW 19468



SCHEDULE "A15" TO BYLAW 19468

