

A stylized, colorful illustration of a landscape. It features rolling hills in shades of yellow, orange, and green. In the foreground, there's a blue body of water. A white path or road winds through the green hills. Several white silhouettes of people are shown: one person sitting on a bench, two people walking, and a person walking a dog. There are also some green trees and a small white cloud in the sky.

CORPORATE BUSINESS PLAN

2019 - 2022

City Council
April 16, 2019

Edmonton

CORPORATE PROMISE



A NEW FRAMEWORK



OBJECTIVES

**MAKE
TRANSFORMATIONAL
IMPACTS**

STRATEGIC

**DELIVER
EXCELLENT
SERVICES**

SERVICE

**MANAGE
THE
CORPORATION**

SUPPORTING



MAKE TRANSFORMATIONAL IMPACTS



**HEALTHY
CITY**



**URBAN
PLACES**



**REGIONAL
PROSPERITY**



**CLIMATE
RESILIENCE**



DELIVER **EXCELLENT SERVICES**



RECREATION & CULTURE

SOCIAL SUPPORT



CIVIC SERVICES

PUBLIC SAFETY



COMMUNITY DEVELOPMENT

MOVEMENT OF PEOPLE & GOODS



LAND DEVELOPMENT

ECONOMIC DEVELOPMENT

ENVIRONMENTAL PROTECTION

Edmonton

MANAGE THE CORPORATION



PEOPLE, PARTNERSHIPS & RELATIONSHIPS



PROJECT & ASSET MANAGEMENT



STRATEGY & BUSINESS



TECHNOLOGY & DATA

EMPLOYEE EXPERIENCE & SAFETY

ENVIRONMENTAL STEWARDSHIP

FINANCIAL MANAGEMENT

Edmonton

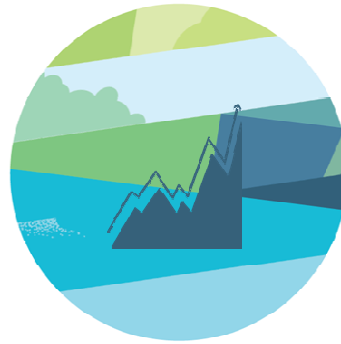
INTEGRATED **DECISION-MAKING**



**PROGRAM
OUTCOME**



SERVICES



**IMPROVEMENT
PROJECTS**



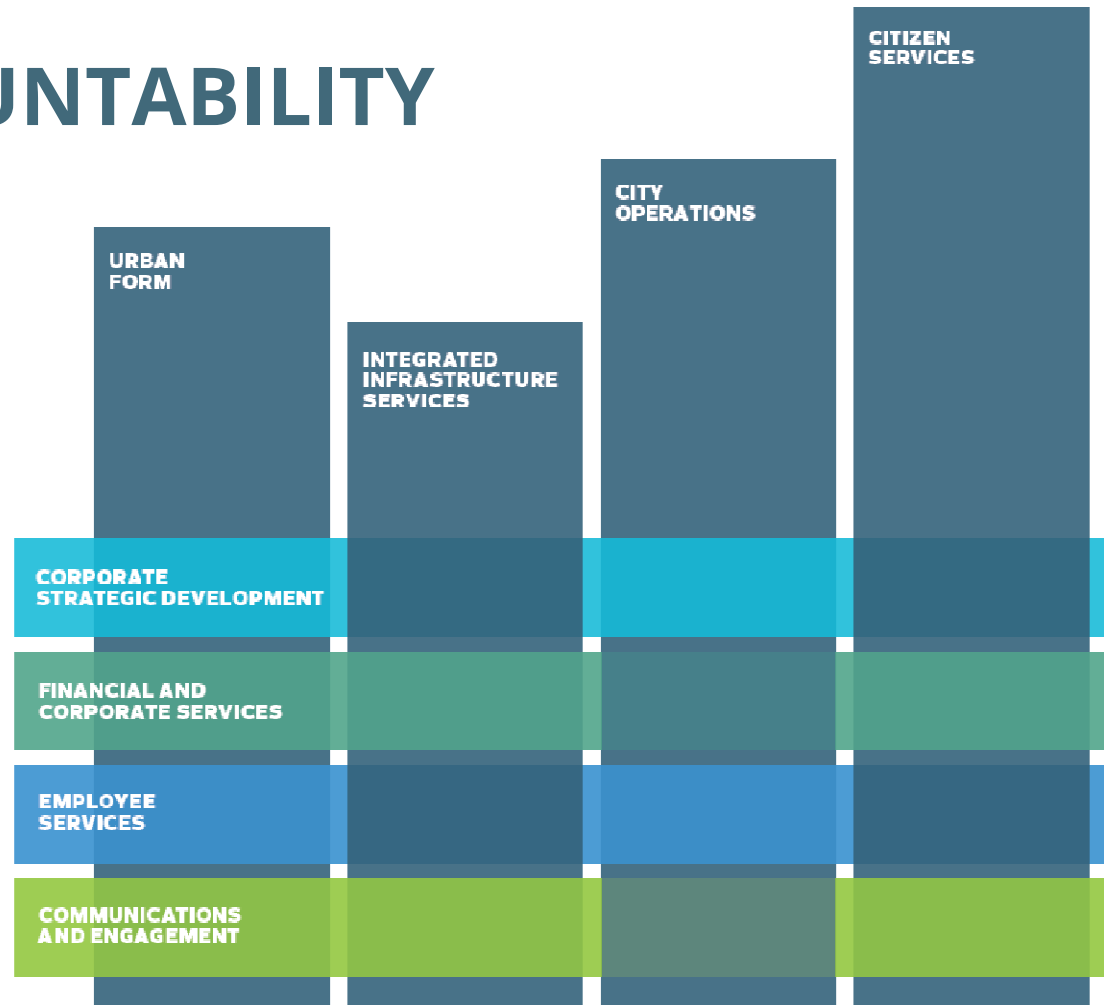
**CAPITAL
INVESTMENTS**



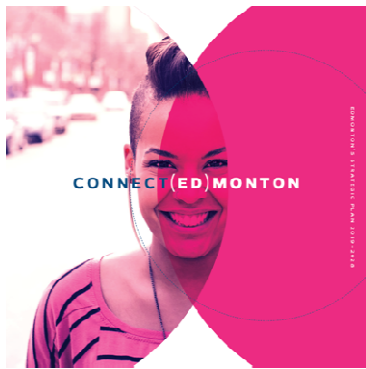
RESOURCING



ACCOUNTABILITY



WHAT TO EXPECT



DIRECTION



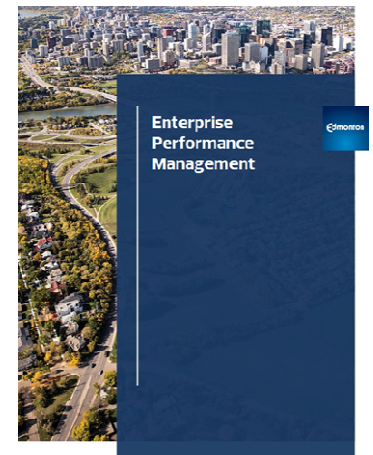
CHOICES



ACTION



RESOURCES



RESULTS





***“Working together,
aligned with City Council,
we enable a better life
for all Edmontonians.”***

Edmonton





Thank you!

SAFE
HELPFUL
ACCOUNTABLE
INTEGRATED
EXCELLENT

Edmonton