

Bylaw 19625

Closure of Two Vehicular Accesses to  
a Titled Parcel Located at 22910 Stony Plain Road NW

---

WHEREAS the Municipal Council of the City of Edmonton may pass a Bylaw pursuant to Section 28 of the *Highways Development and Protection Act*, S.A. 2004, c. H-8.5 for the purpose of removing any access to a controlled street; and

WHEREAS City Council has considered the proposed closing and has agreed that it is in the public interest to pass this Bylaw;

NOW THEREFORE the Municipal Council of the City of Edmonton, duly assembled, enacts as follows:

1. All means of access to or from a controlled street generally as illustrated on the attached Schedule "A", is hereby closed.

READ a first time this 19th day of April, A.D. 2021;

READ a second time this 19th day of April, A.D. 2021;

READ a third time this 19th day of April, A.D. 2021;

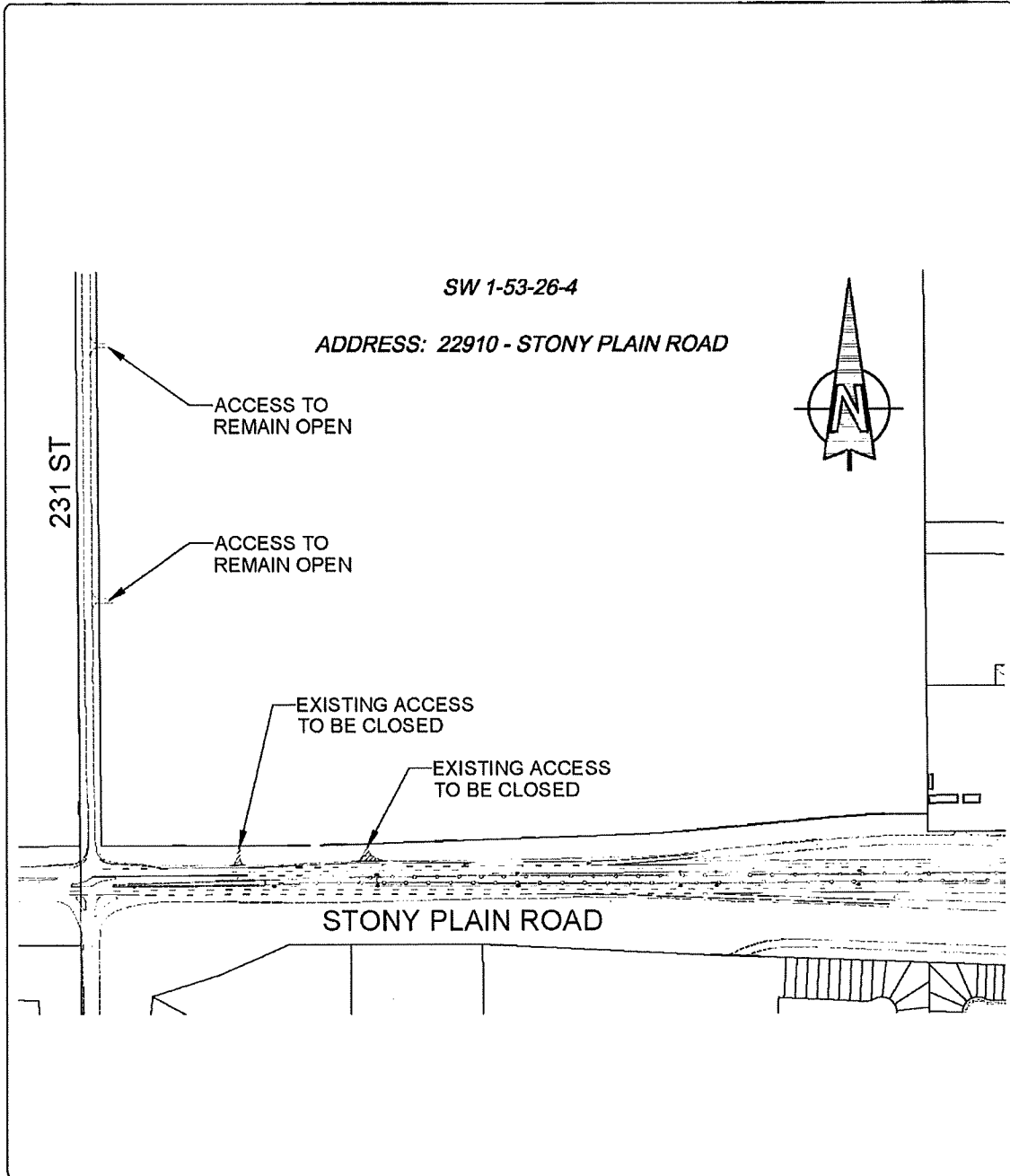
SIGNED and PASSED this 19th day of April, A.D. 2021.

THE CITY OF EDMONTON


  
\_\_\_\_\_  
MAYOR

  
\_\_\_\_\_  
CITY CLERK

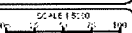
SCHEDULE "A" TO BYLAW 19625



NO.	REVISIONS	BY	DATE	APP'D

 ACCESS CLOSURE

SCALE 1:500



**City of Edmonton** INTEGRATED INFRASTRUCTURE SERVICES  
TRAIL - 1011 7th St. S. 10th Fl.

**STONY PLAIN ROAD**  
 22910 - STONY PLAIN ROAD, T5S 2C5

**ACCESS CLOSURE**