



Polish Heritage Society of Edmonton

Presentation to Edmonton City Council



Who Are We?

- PHSE formed in 1993, and is a non-profit, charitable organization whose mission is to “unite the Polish Community in a common cause, by developing a centre for the enjoyment and benefit of present and future generations”.
- The Board of Directors, is both elected (Executive: President, Vice-President, Treasurer) and appointed (representatives of affiliated organizations: the Canadian Polish Congress, Alberta Society, Polish Canadian Society, Polish Combatants’ Association, No. 6, and the Polish Canadian Women’s Federation).





Our Heritage

- Three waves of Polish Immigrants
 - 1885 to WWII
 - After WWII
 - After 1981 Martial Law in Poland
- Soldiers, artisans, skilled tradesmen, intellectuals, entrepreneurs, doctors, lawyers, public servants, farmers, musicians, artists, scientists contributing to building Edmonton
- Two Churches, two Saturday Polish Schools, one Bi-lingual Polish Immersion Program, Boy and Girl Scouts, over 20 different societies focusing on a variety of causes
- Over 72,000 with Polish Heritage in Edmonton



Our Heritage

- Centre will increase the profile of the Polish Community and highlight its attributes and its contributions to building a safe, prosperous and strong Edmonton
- Will instill pride in the Polish culture, language and traditions
- Highlight accomplishments of Poles as honourable, hard working, principled citizens of this great city
- This beautiful building, located in the heart of Edmonton, will serve as a tourist attraction and a place to enjoy a meal or a coffee amongst friends



CENTRE POLONIA

SIGNAGE

MAIN FLOOR PLAN

FLOOR AREA: 8,562 sq. ft. (795 sq. m)

ROOMS AND AREAS:

- GALLERY/STORE: 1576 sq. ft. [146 sq. m]
- LIBRARY/BOOK STORAGE
- ELEC/TELECOM: 280 sq. ft. (27 sq. m)
- MANAGER OFFICE: 150 sq. ft. (14 sq. m)
- WATER METER: 80
- STAIR
- COAT CHECK: 210 sq. ft. (20 sq. m)
- VESTIBULE
- ATRIUM
- KITCHEN: 510 sq. ft. (47 sq. m)
- RESTAURANT: 1098 sq. ft. (102 sq. m)
- LOUNGE: 773 sq. ft. (72 sq. m)
- BAR
- STAIR

Dimensions:

Overall dimensions: 25'-9 1/2" x 34'-2 3/4"

Room dimensions (approximate):

- GALLERY/STORE: 28'-0" x 56'-0"
- LIBRARY/BOOK STORAGE: 14'-0" x 14'-0"
- ELEC/TELECOM: 14'-0" x 14'-0"
- MANAGER OFFICE: 14'-0" x 14'-0"
- WATER METER: 8'-0" x 8'-0"
- STAIR: 14'-0" x 14'-0"
- COAT CHECK: 14'-0" x 14'-0"
- VESTIBULE: 14'-0" x 14'-0"
- ATRIUM: 14'-0" x 14'-0"
- KITCHEN: 14'-0" x 14'-0"
- RESTAURANT: 14'-0" x 14'-0"
- LOUNGE: 14'-0" x 14'-0"
- BAR: 14'-0" x 14'-0"
- STAIR: 14'-0" x 14'-0"

Scale: 1/8" = 1'-0"

SECOND FLOOR PLAN

FLOOR AREA: 8,813 sq. ft. (819 m²)

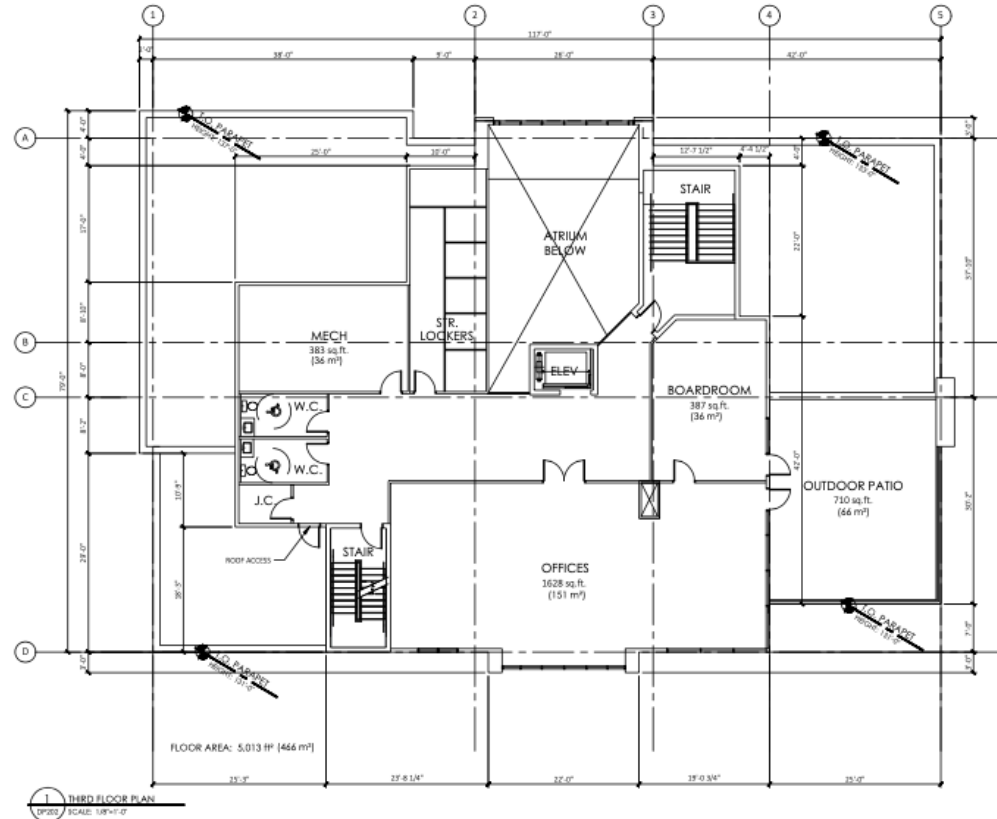
Rooms and Areas:

- DANCE STUDIO: 1108 sq. ft. (103 m²)
- ATRIUM BELOW
- STAIR
- CLASSROOMS: 1000 sq. ft. (93 m²)
- STORAGE: 300 sq. ft. (28 m²)
- GAMES AND HOBBY: 900 sq. ft. (84 m²)
- LOUNGE: 343 sq. ft. (32 m²)
- PLAY ZONE: 260 sq. ft. (24 m²)
- SPARE OFFICE/STORAGE: 165 sq. ft. (15 m²)
- TEACHERS OFFICE: 230 sq. ft. (21 m²)
- CHANGE ROOM: 209 sq. ft. (19 m²)
- CHANGE ROOM: 197 sq. ft. (18 m²)
- WOMEN
- MEN
- J.C.

Other Features:

- GLASS PARTITION WALLS
- GLASS & HEATED WALL
- FLOOR ABOVE
- MOVABLE PARTITION

THIRD FLOOR PLAN









Our Heritage

- We are not just building a structure of steel, concrete and glass
- We are creating community to enable a greater understanding between the generations, and to recognize and honour those who contributed to building Polonia, the most robust and effective of any Polish Community in Canada.
- Gathering place for all Edmontonians; a hub for our children and youth to learn, grow, meet new friends, and make new memories in a safe and stimulating environment
- True representation of the spirit of the Polish people: enterprising, intelligent, inclusive and community minded



Polish Heritage Society of Edmonton

Presentation to Edmonton City Council

THANK YOU!