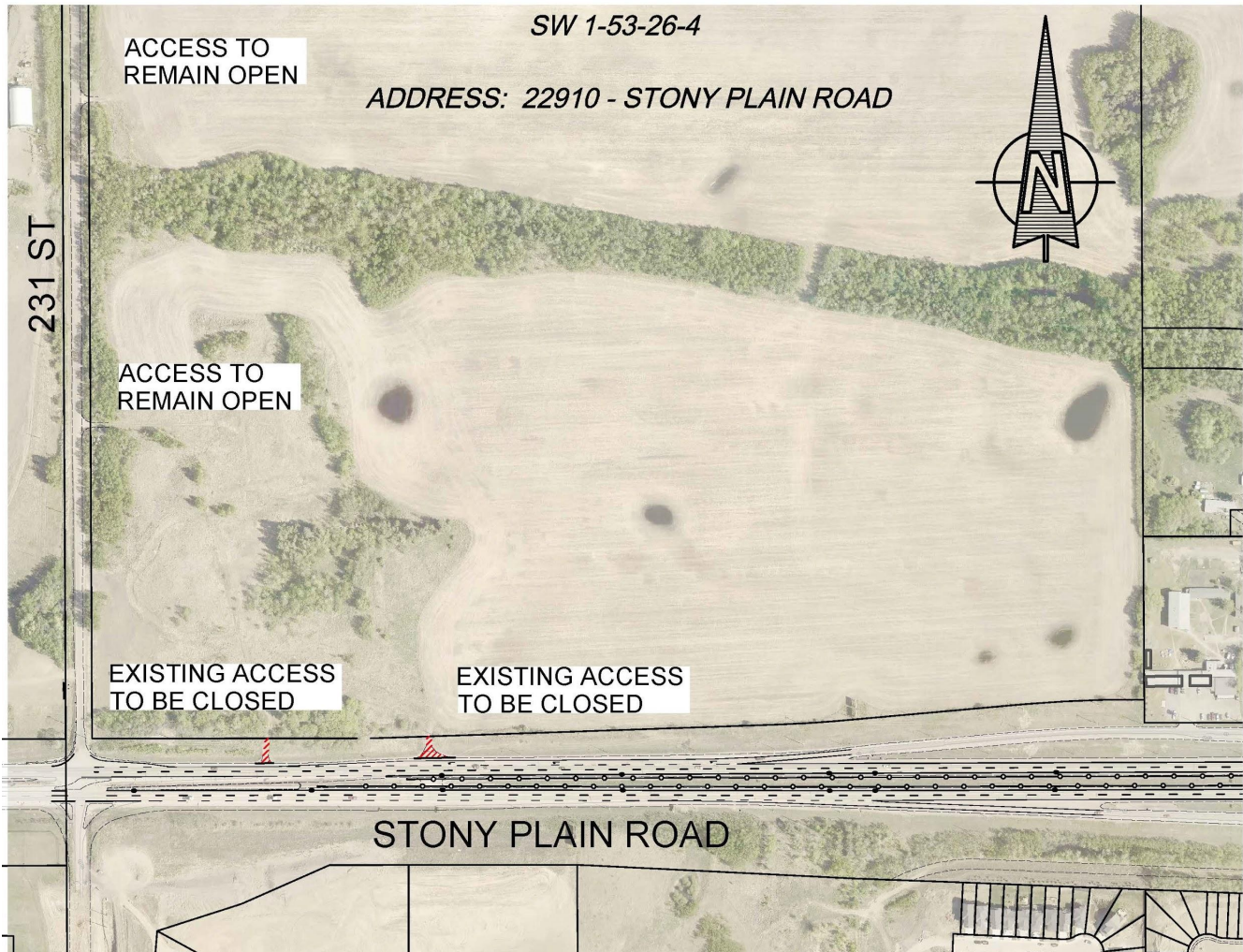
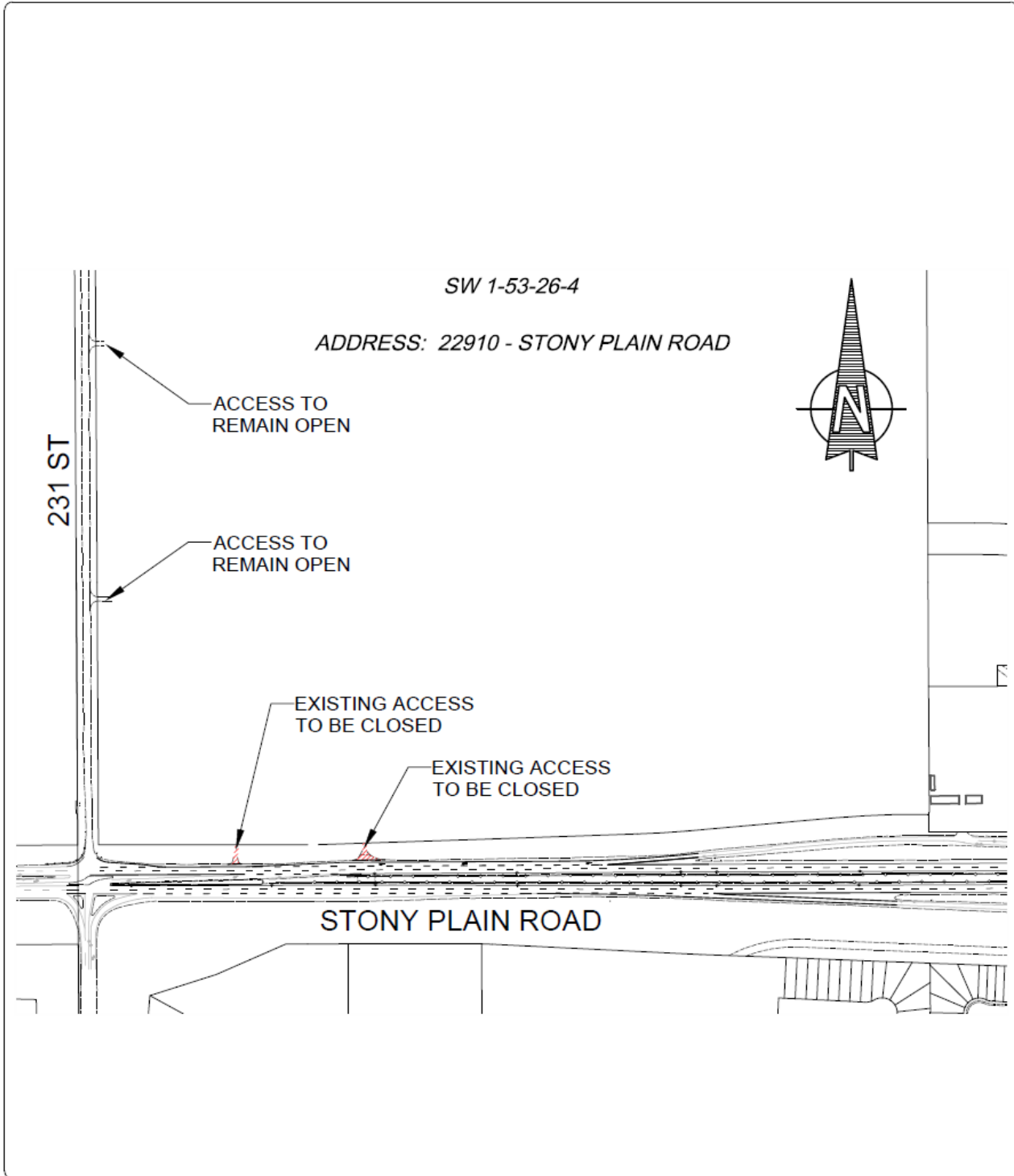


22910 Stony Plain Road NW Access Closures





7				
6				
5				
4				
3				
2				
1				
NO.	REVISIONS	BY	DATE	APPD

 ACCESS CLOSURE

SCALE 1:5000



 THE CITY OF **Edmonton** INTEGRATED INFRASTRUCTURE SERVICES  
INFRASTRUCTURE DELIVERY

PROJECT

**STONY PLAIN ROAD**  
22910 - STONY PLAIN ROAD, T5S 2C5

DRAWING

**ACCESS CLOSURE**