

Bylaw 19625

Closure of Two Vehicular Accesses to  
a Titled Parcel Located at 22910 Stony Plain Road NW

---

WHEREAS the Municipal Council of the City of Edmonton may pass a Bylaw pursuant to Section 28 of the *Highways Development and Protection Act*, S.A. 2004, c. H-8.5 for the purpose of removing any access to a controlled street; and

WHEREAS City Council has considered the proposed closing and has agreed that it is in the public interest to pass this Bylaw;

NOW THEREFORE the Municipal Council of the City of Edmonton, duly assembled, enacts as follows:

1. All means of access to or from a controlled street generally as illustrated on the attached Schedule "A", is hereby closed.

READ a first time this \_\_\_\_\_ day of \_\_\_\_\_, A.D. 2021;

READ a second time this \_\_\_\_\_ day of \_\_\_\_\_, A.D. 2021;

READ a third time this \_\_\_\_\_ day of \_\_\_\_\_, A.D. 2021;

SIGNED and PASSED this \_\_\_\_\_ day of \_\_\_\_\_, A.D. 2021.

THE CITY OF EDMONTON

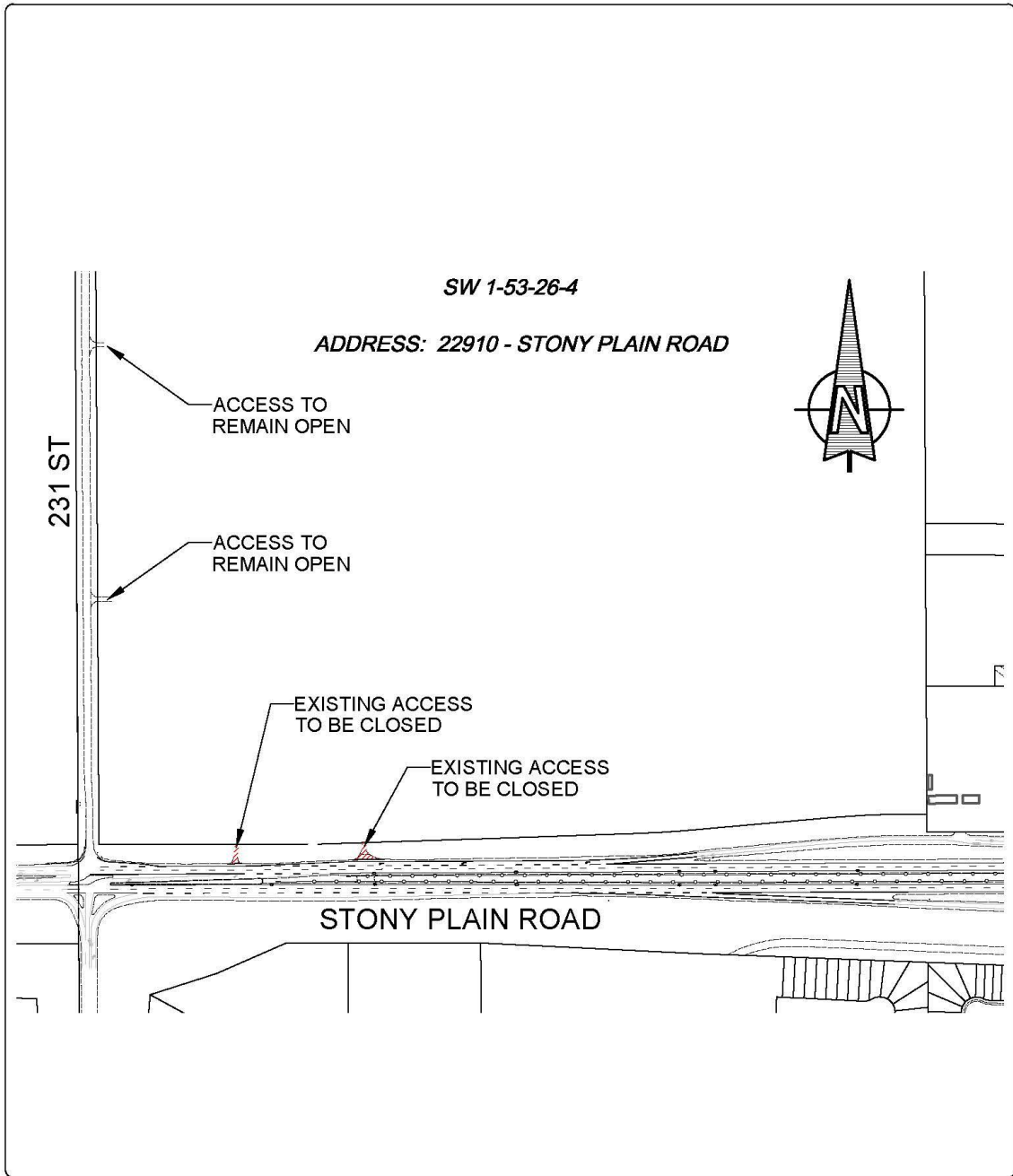
---

MAYOR

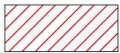
---

CITY CLERK

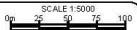
SCHEDULE "A" TO BYLAW 19625



1					
2					
3					
4					
5					
6					
7					
8					
9					
10					
NO.	REVISIONS	BY	DATE	APP'D	

 ACCESS CLOSURE

SCALE 1:5000



**THE CITY OF**  
**Edmonton** INTEGRATED INFRASTRUCTURE SERVICES  
INFRASTRUCTURE DELIVERY

PROJECT  
**STONY PLAIN ROAD**  
22910 - STONY PLAIN ROAD, T5S 2C5

DRAWING  
**ACCESS CLOSURE**