

# SHISHA LOUNGE'S RE-DESIGN

---

PRESENTED BY: MOHAMMED MOUSA, P. ENG, HSA

# OBJECTIVES:

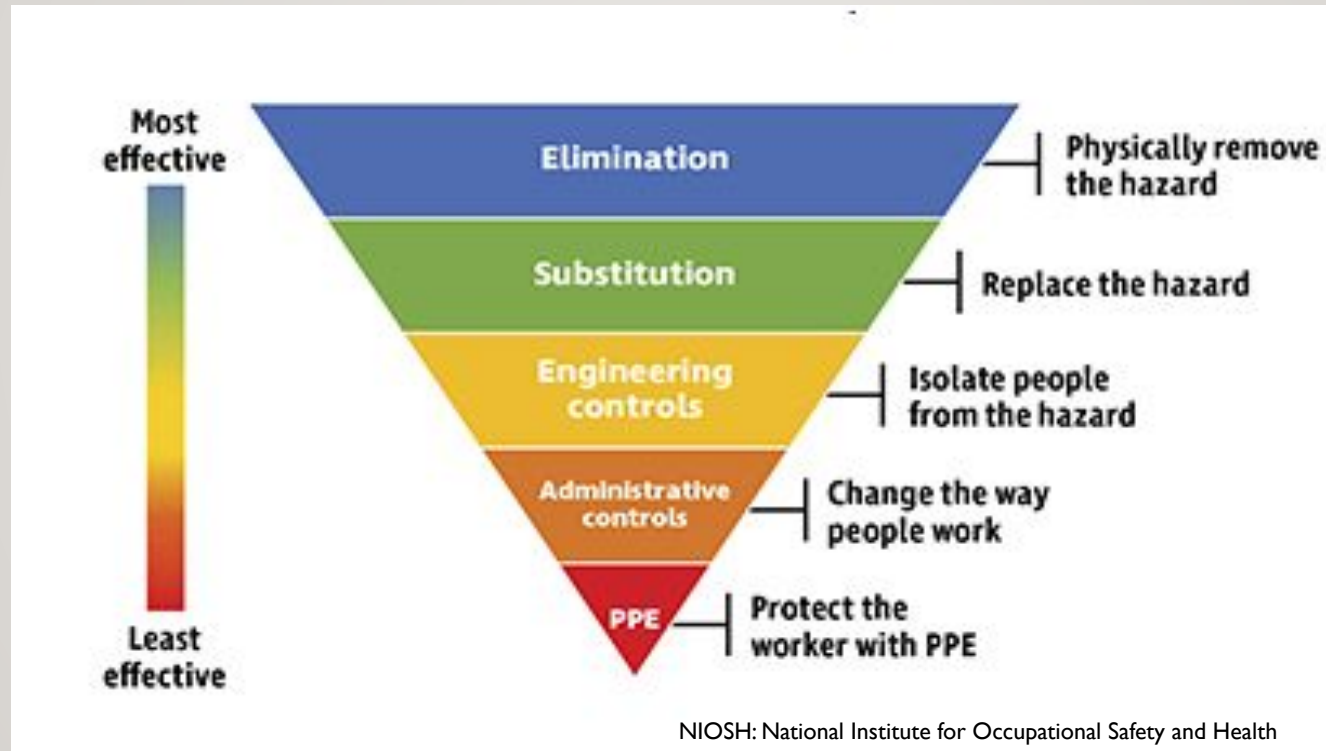
---

- ❖ Ensure 100% Business Compliance with Community and Public Services Committee's Conditions (January 20, 2021):
  - Physically separated smoking area that prevents smoke from entering the remainder of the premises
  - No food or drink service within the smoking area
  - Mandatory signage identifying smoking areas
  - Working to eliminate any second hand impacts to employees

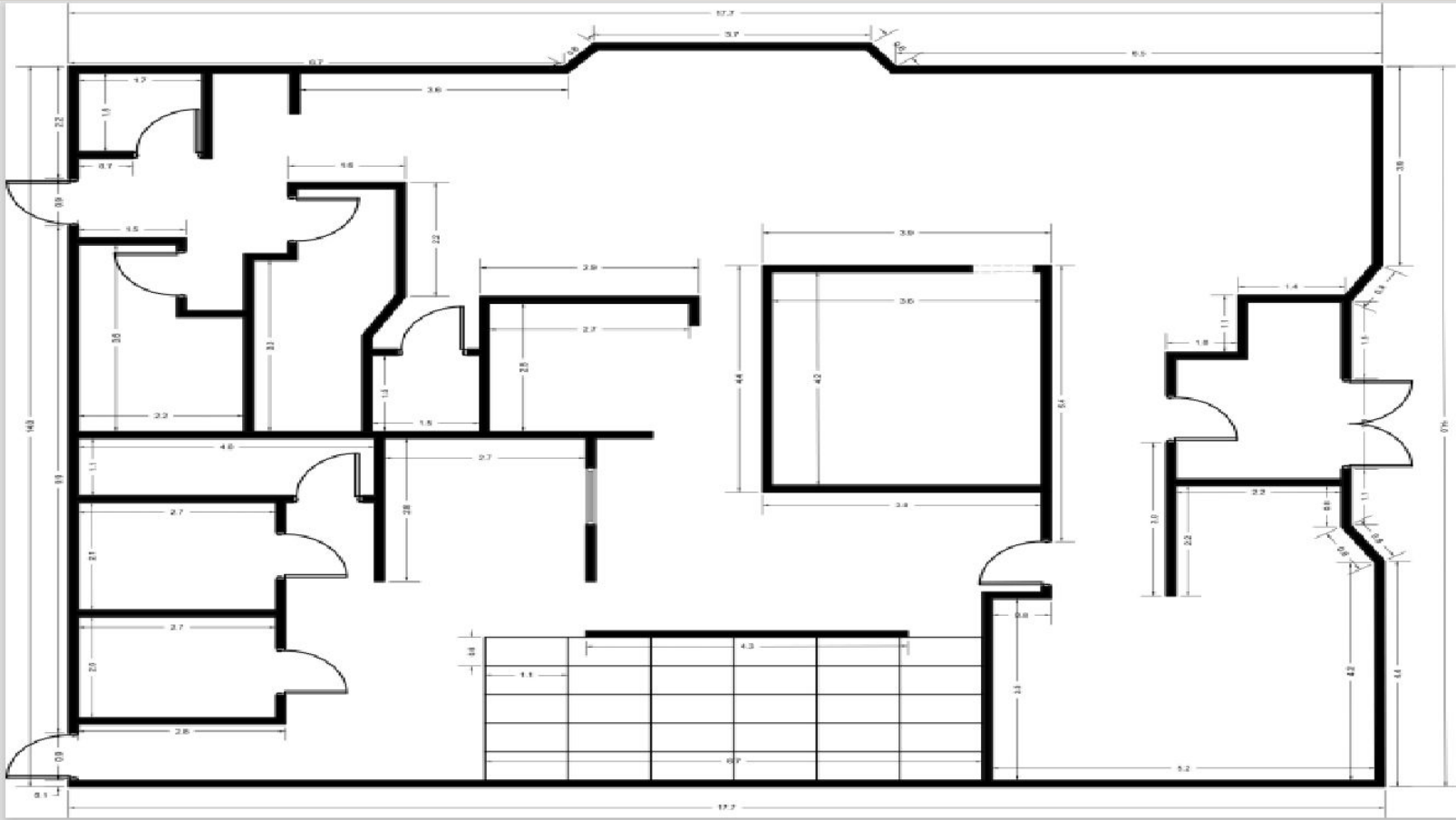
# ALBERTA OCCUPATIONAL HEALTH AND SAFETY CODE

## PART 2 HAZARD ASSESSMENT, ELIMINATION AND CONTROL

---

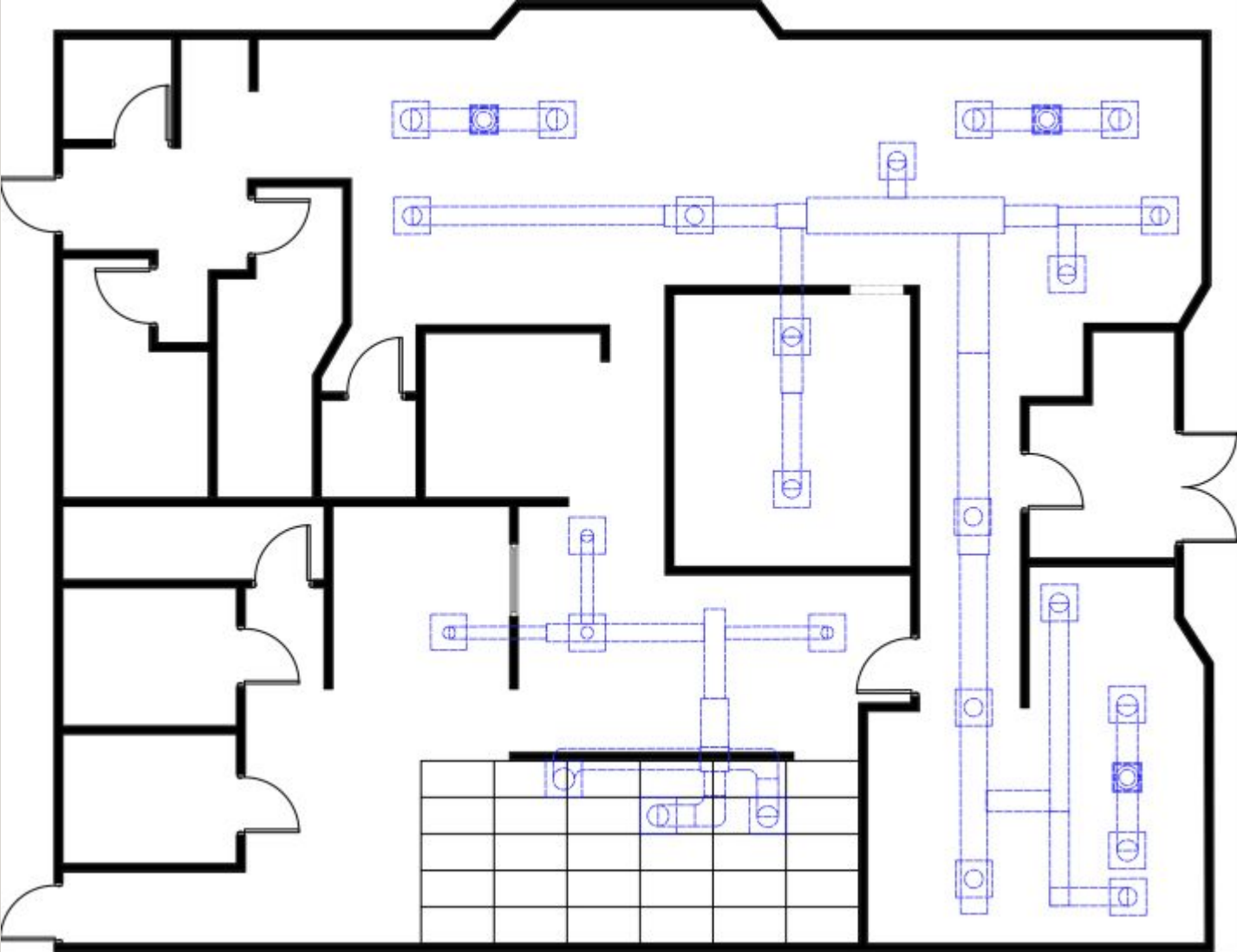


# ORIGINAL DESIGN – MAZATI SHISHA LOUNGE

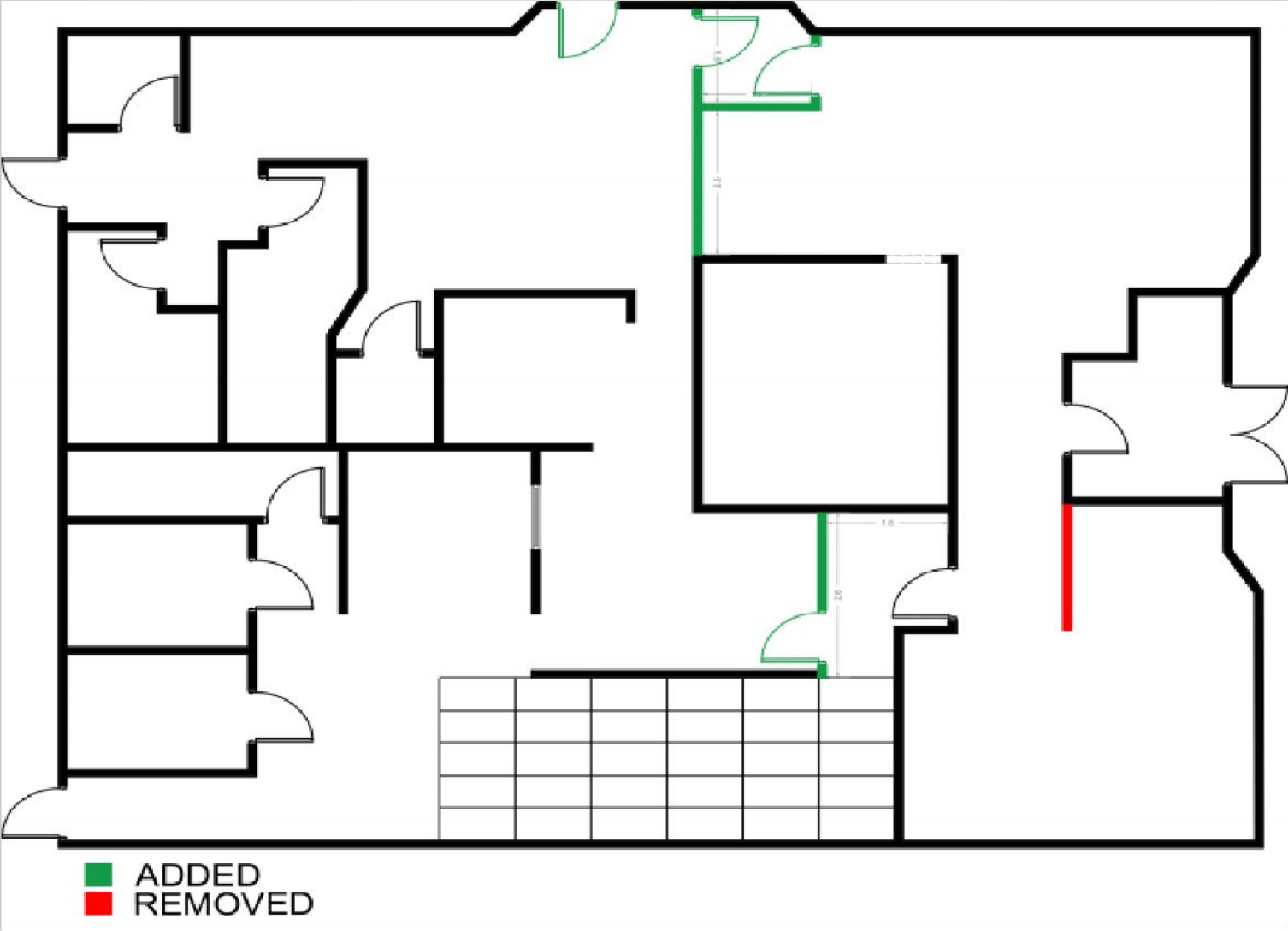




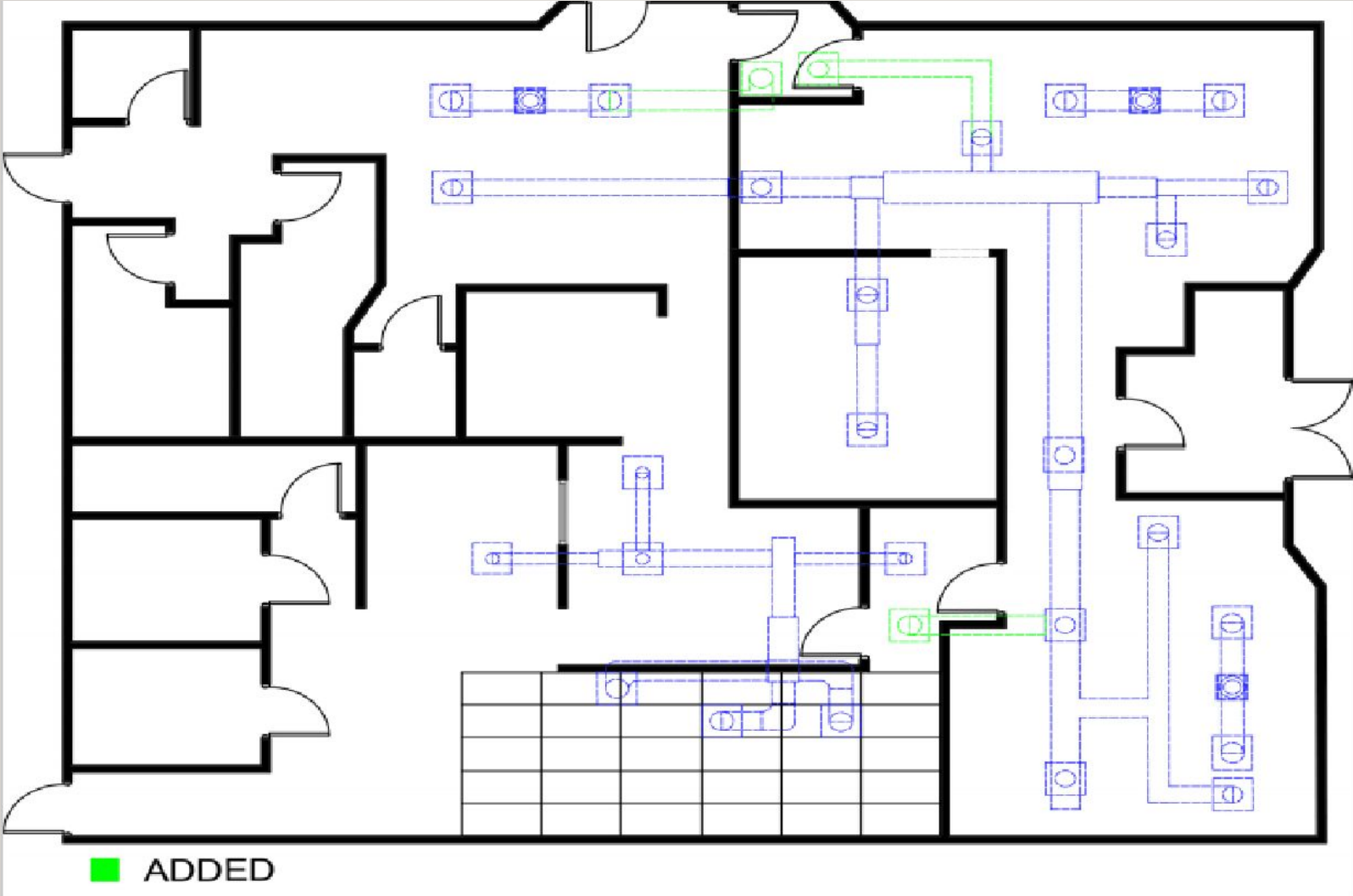
# ORIGINAL DESIGN – MAZATI SHISHA LOUNGE



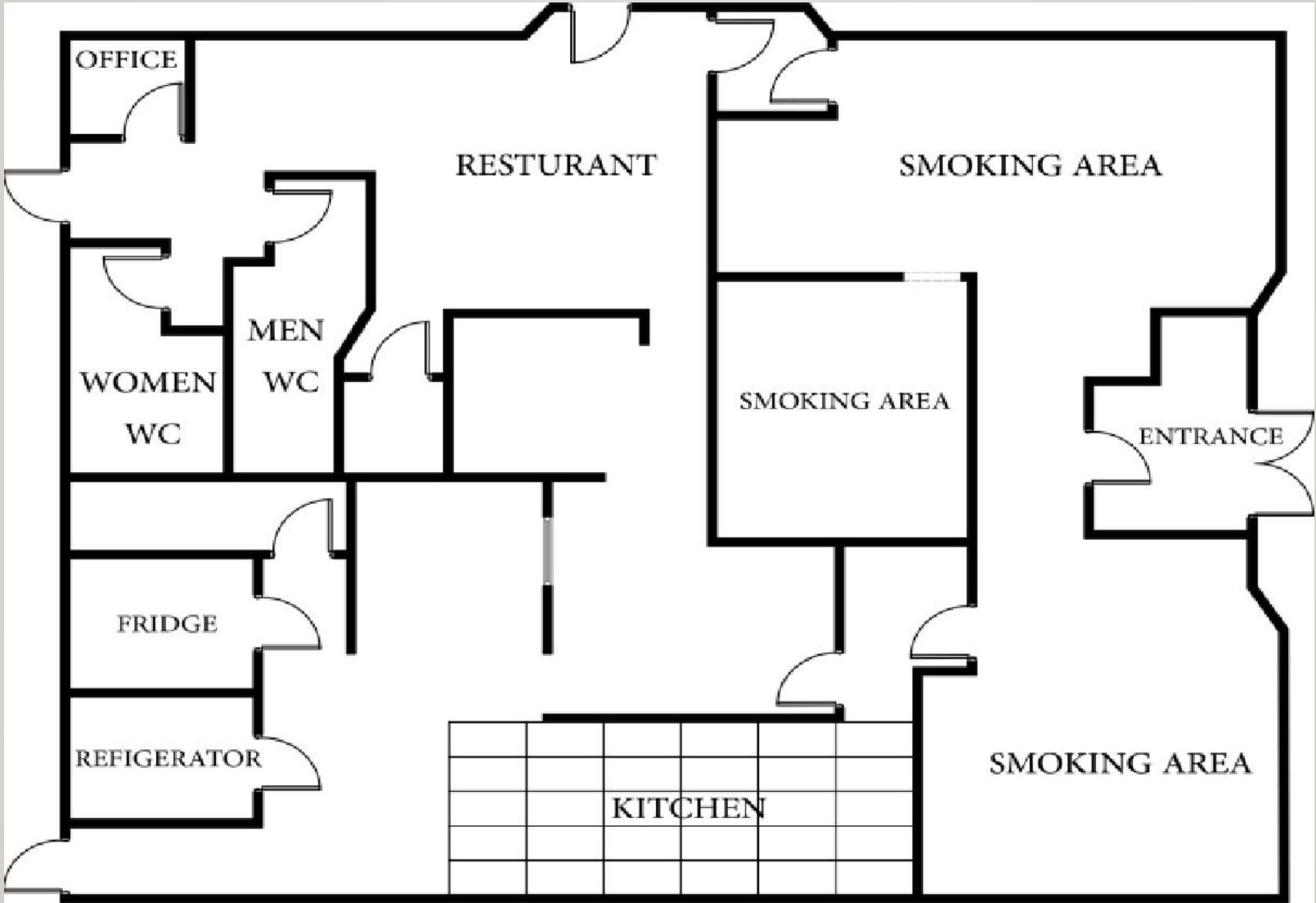
# COMPLIANCE DESIGN – MAZATI SHISHA LOUNGE



# COMPLIANCE DESIGN – MAZATI SHISHA LOUNGE

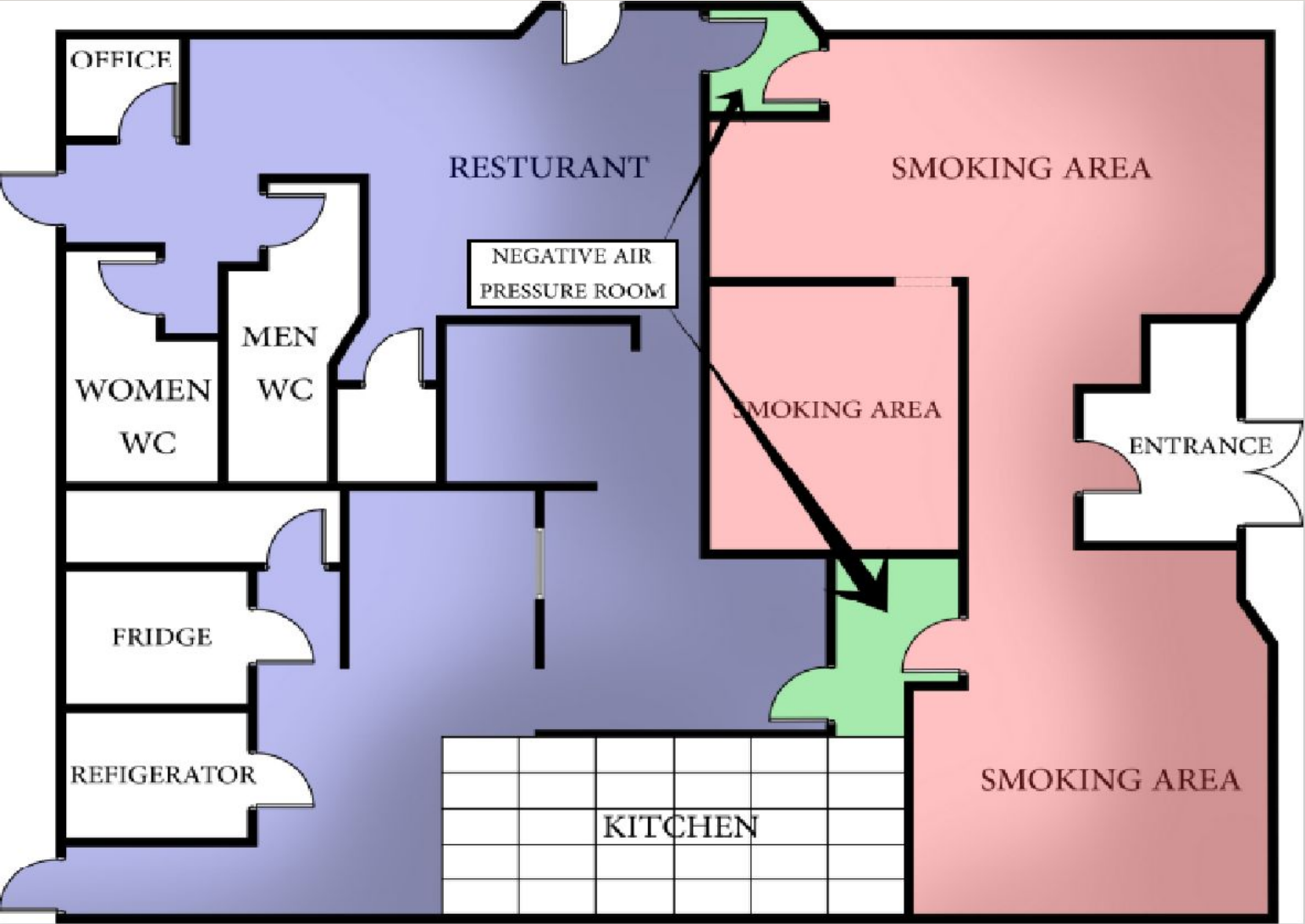


# COMPLIANCE DESIGN – MAZATI SHISHA LOUNGE

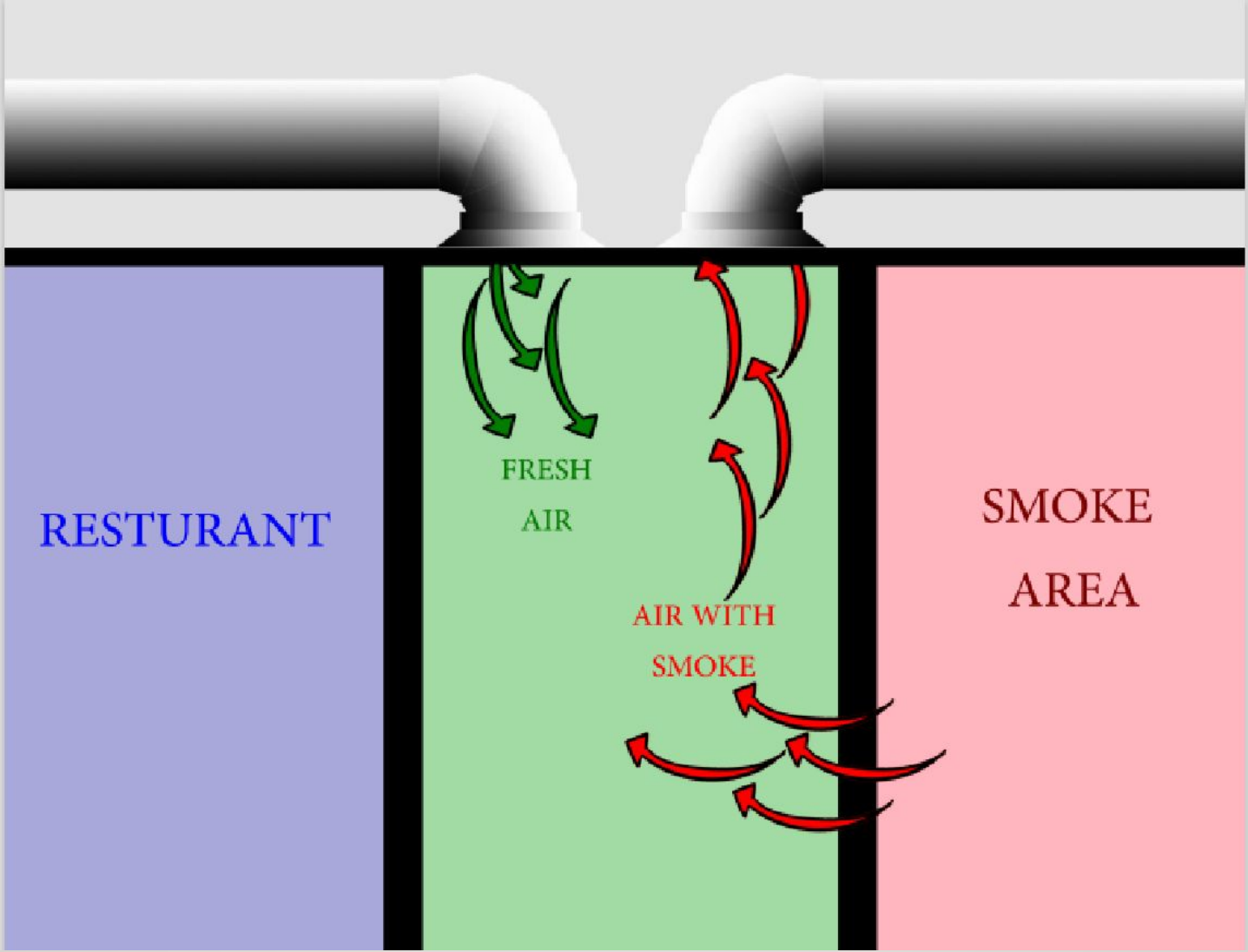




# COMPLIANCE DESIGN – MAZATI SHISHA LOUNGE



# COMPLIANCE DESIGN – MAZATI SHISHA LOUNGE



THANKS FOR YOUR TIME