

SANITARY SERVICING STRATEGY FUND GOVERNANCE OPTIONS

Additional Collaboration

Executive Committee
Council Report: CR_6671rev
April 12, 2021



WHAT IS THE SSSF?



- Established in 1998 to fund sanitary trunk construction to support city's growth
- Pooled reserve from development charges
- Managed by Oversight Committee comprised of the City, EPCOR and industry representation

THE CITY PLAN IMPLEMENTATION APPROACH



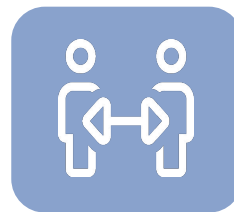
Planning, Policy & Regulation



Process & Service Delivery



Data & Measurement

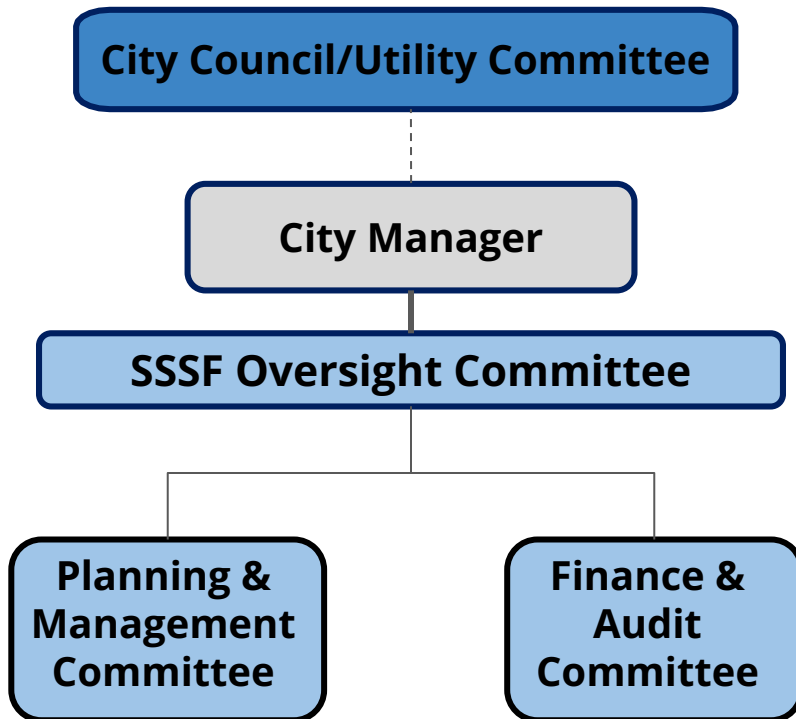


People, Partnerships & Change Management

Examples

- | | | | |
|---------------------------|--------------------------------|-------------------------|--|
| • District Planning | • Prioritized budgeting | • Measures and targets | • Organizational change management |
| • City Planning Framework | • Business planning | • Transparent reporting | • External relationships and partnership |
| • Zoning Bylaw Renewal | • Operational service delivery | | |

SSSF GOVERNANCE STRUCTURE



ROLES & RESPONSIBILITIES IN THE SSSF

CITY ADMINISTRATION

Review project and budget details and discharge funds for construction

Manage Fund's cash flow model

Day-to-day program management

Organize and facilitate committee meetings

EPCOR

System planning, analysis, segment prioritization

Advance projects for review and construct

Conduct public engagement at construction stage

Operate and maintain assets

DEVELOPMENT INDUSTRY

Represent stakeholders and strategic interests

Highlight sanitary servicing needs

Provide input on growth forecasts

REFINED GOVERNANCE OPTION



- Increased Council Oversight
- Enhanced information sharing with public
- Increased transparency

GOVERNANCE OF DECISION-MAKING



Utility Committee / Council decisions

- Changes to SSSF rates
- Changes related to policy and/or funding
- Material changes to the long-term network plan



Oversight Committee decisions

- Prioritize projects considering projected growth and City policy
- Approve changes in project timing, costs, and non-material changes to sanitary trunk plan
- Report on decisions via SSSF Annual Report

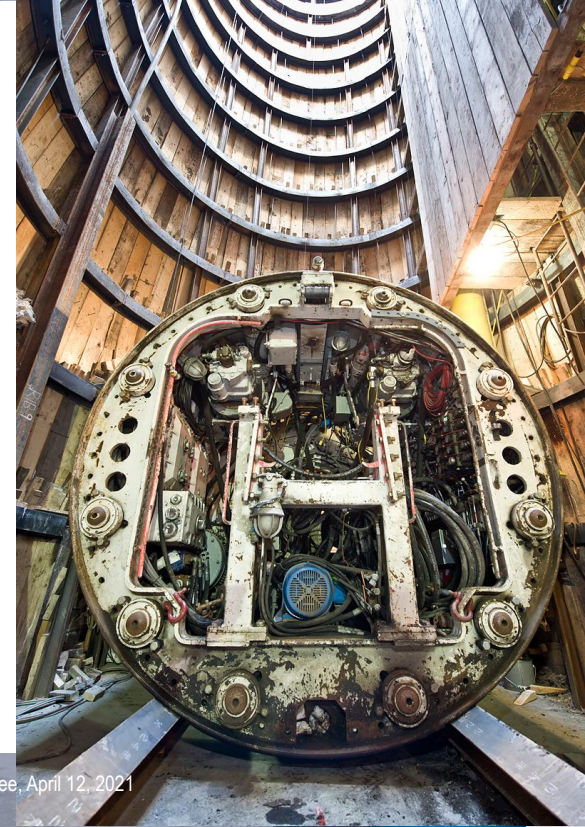
COMMUNICATIONS AND ENGAGEMENT

Administration's Commitment:

- Enhanced information sharing and transparency
 - Improved web presence and accessible information
 - SSSF Annual report
 - Enhanced communication through program specific email (sssf@edmonton.ca)

EPCOR's Commitment:

- Public Engagement
 - Planning stage, through IRP Process
 - Prior to project construction



LONG-TERM SYSTEM PLANNING



- Administration and SSSF Committees will continue to provide oversight.
- EPCOR SanIRP will provide integrated long-range plan for the sanitary system, including changes to SSSF approved trunk network.
- Continued collaboration with Regional Commission.
- SanIRP provides opportunity to revisit SESS decision with Council when investment decision needed.



Thank you

Edmonton