

Sanitary Services Executive Committee Meeting April 12, 2021

Chris Keeler
Civic Affairs Director
Beverly Heights Community League

The 2018 Proposed Parking Lot Expansion into the Gold Bar Park engaged various stakeholders.

The Beverly Heights Community joined the Gold Bar Park Alliance to oppose the project.

Edmonton group fears loss of Gold Bar Park land for parking lot

[Anna McMillan](#) · CBC News · Posted: May 04, 2018 8:30 AM MT | Last Updated: May 4, 2018

Proposal made due to plant expansion

Plant director Simon Thomas said a new parking lot is a necessity for the facility.

For the past 60 years, the plant has been growing within its boundaries, but "we've reached the point that we now need to expand beyond our current fence line," Thomas said.

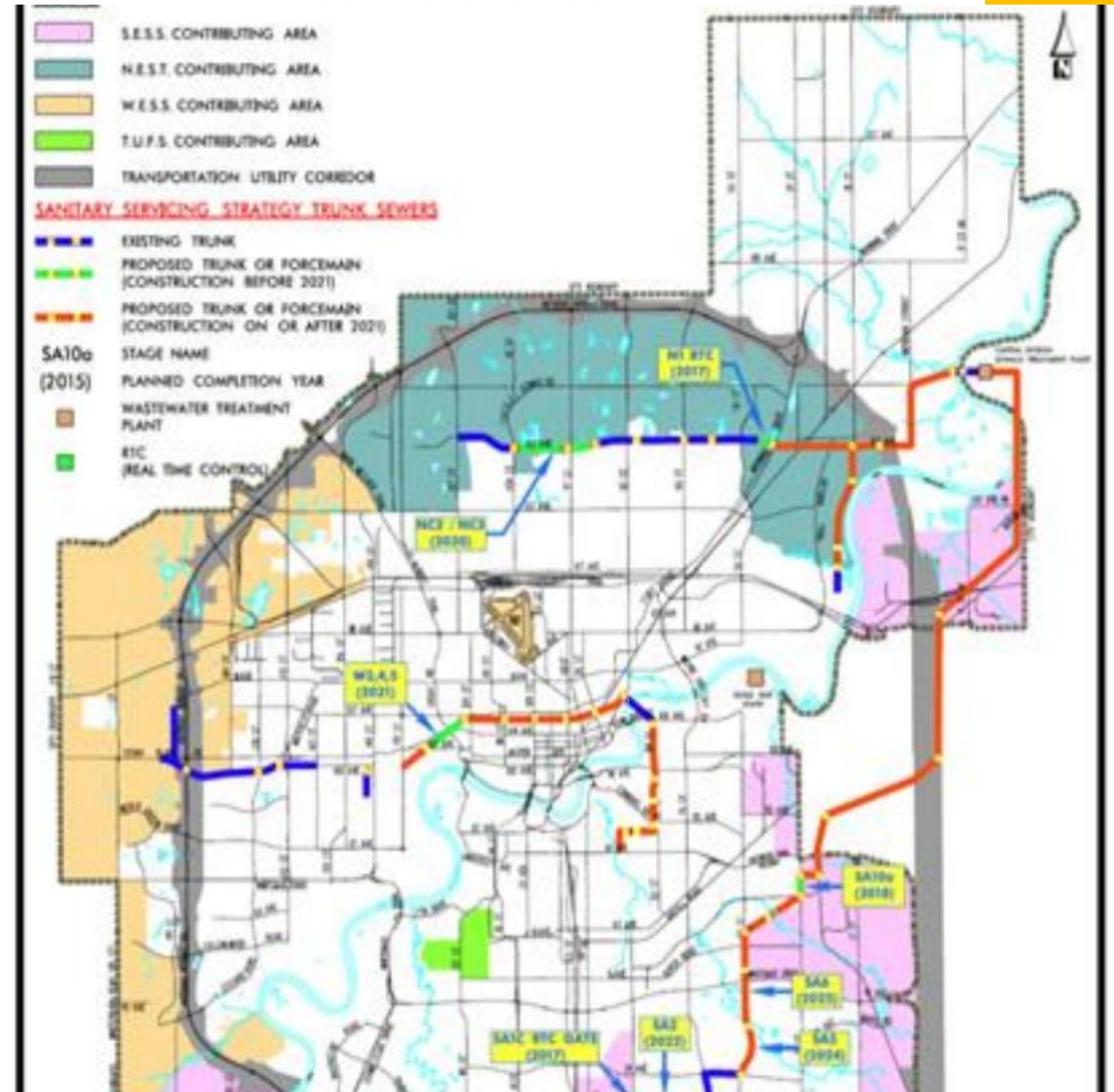
The plant is growing and is continuously adding more staff and treating more wastewater, he added.

If the project is approved, staff will no longer park on site and will instead park in the new lot, which will have 170 to 220 stalls. Some of the trees in the area will have to be removed to make way for those stalls.



Discovered the South East Edmonton Sanitary Sewer plan was changed in 2017 to reroute the trunk line to the Gold Bar Wastewater Treatment Plant

- Had assumed the Gold Bar Plant would always exist but that future sewage expansion would be sent to the Alberta Capital Wastewater Treatment Plant
- The decision to reroute was made in 2017 coinciding with the transfer of drainage from the COE to EPCOR
- The decision was made by the Sanitary Servicing Strategy Fund Oversight Committee
 - Unelected
 - Without any council oversight
 - Without public engagement
 - Justification favored saving the capital cost to developers



Gold Bar Park Alliance shifted focus to address the lack of Public Engagement and lack of Political Oversight regarding the SESS decision

In spite of EPCOR assurances we were concerned future plant expansion would have to occur outside of the current fence line

October 1, 2018

PROVIDING MORE **EPCOR**

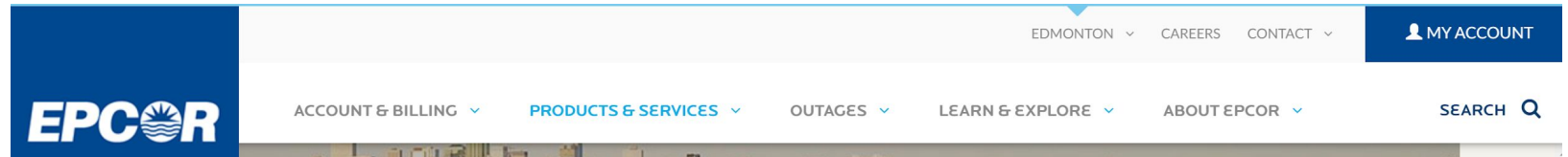
Sanitary Servicing Strategy Fund Integrated Planning

4.2. Gold Bar Integrated Resource Plan – 2016

Observation #2 With the addition of modern technology (not available in 1999), the GBWWTP can treat increased flows from South Edmonton for the foreseeable future

4.3. Relocation of Non-Processing Buildings - 2009 Land Swap Agreement

There has been a longstanding plan to relocate non-processing buildings (maintenance, administration, operations/ control) from the centre of the plant to the land outside of the fence line at the south edge of the plant. This relocation would open up space in the very congested solids treatment part of the plant which improves site safety.



Since the EPCOR Gold Bar Wastewater Treatment Plant opened in 1956 we've remained at the forefront of wastewater treatment through continued investment in new technology. We're making ongoing investments to ensure our waste treatment plant is safe, reliable and able to meet the needs of the city and the Gold Bar community. **EPCOR is committed to protecting Edmonton river valley parkland for future generations by using technology to safely handle incoming flows without expanding beyond the current footprint and fenceline through to at least 2060.**

We expect the first of these membrane filtration systems will be installed around 2027. Over time, more will be added based on treatment needs. By 2061—the last year in our current long-term plan—our forecasts show that up to seven of the 11 tanks may have membrane filtration units installed. **These retrofits mean there is no need to expand the plant outside the existing fenceline into the foreseeable future.**

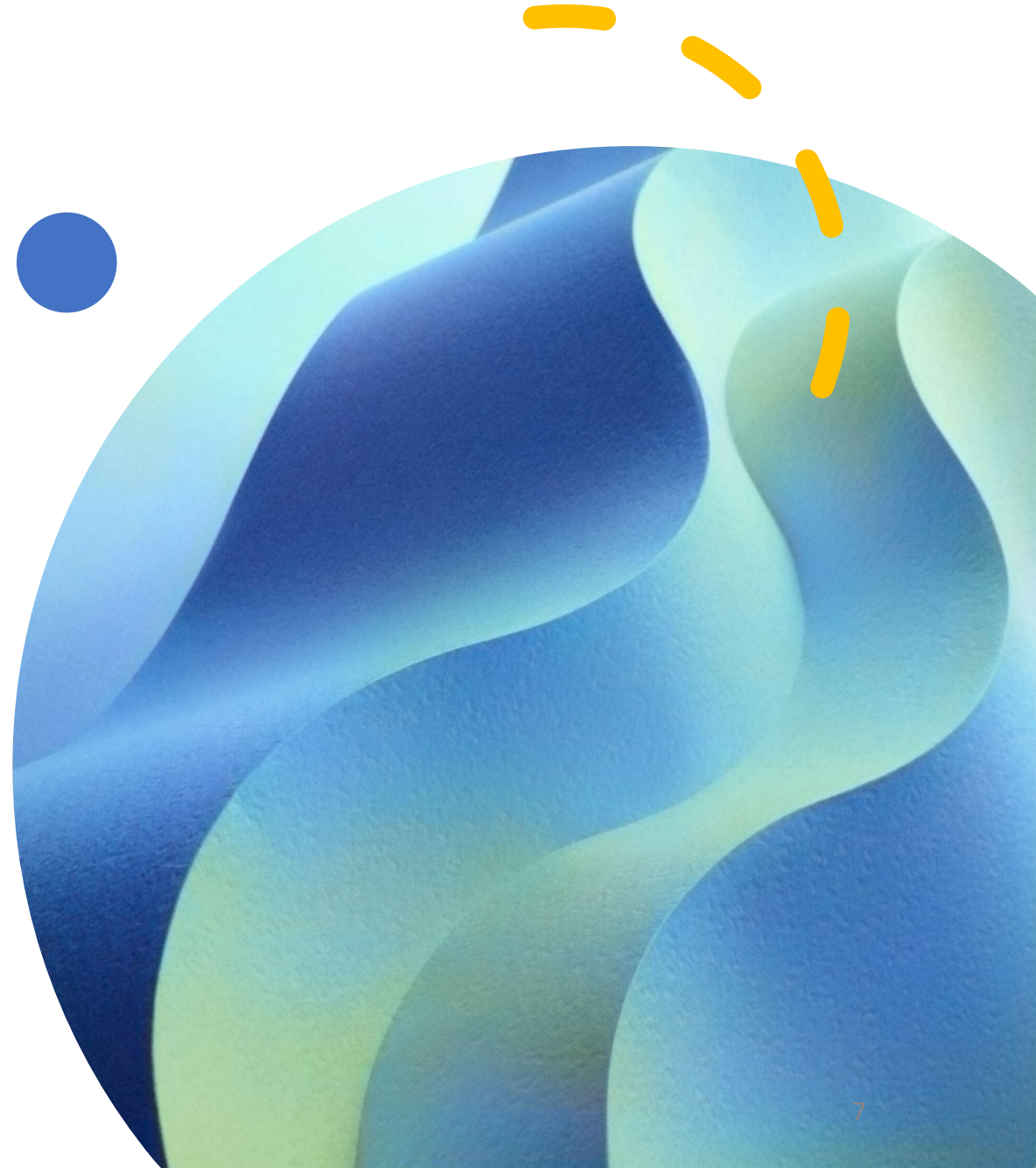


Membrane technology that would be added to existing tanks.

In Response to Public Concerns

Council responded by requesting Administration provide options to provide adequate governance regarding major decisions and to provide a mechanism for revisiting the SESS alignment

EPCOR commenced public engagement and together with a Citizen Planning Committee developed a list of Shared Outcomes and Goals



SAFETY AND HYGIENE IMPROVEMENTS

Update: We heard the community and updated our original proposal. Our new parking solution, Operations Centre and any future buildings needed will be located inside the fenceline on our current footprint.

EPCOR's Recommended Option

LEGEND

-  Parking
-  Admin/Maintenance
-  Operations Centre
-  East gate: main entrance and exit

Governance Options

The Beverly Heights Community League supports Administration's refined Governance Options that:

- Require Council approval of decisions that could directly or indirectly impact development charges and utility rates
- Require Council approval of material changes to the approved trunk network funded by the SSSF

We do however object to the recommendation that the final SESS routing be provided by EPCOR via the SanIRP process.

While the SanIRP process will provide an opportunity for public engagement it is our position that the City of Edmonton and not EPCOR should lead the public engagement process. Such engagement should be broader in scope to ensure both options objectively consider:

- *We will continue to grow to a city of 2 million plus people in the foreseeable future*
- *Infill densification and climate change will add additional volumes to Gold Bar without the addition of SESS*
- *The Gold Bar Wastewater plant is physically constrained while the ACWTP is not*
- *"A critical part of The City Plan is rooted in stewardship and preserving the attributes most valued by Edmontonians today that were handed down to us from previous generations". The river valley and parkland is our most valuable resource!*
- *This is a legacy issue with implications for future generations*
- *EPCOR might not be perceived as objective. If the best decision, based on all merits is for SESS to Gold Bar, the public must have confidence the reasons are valid*