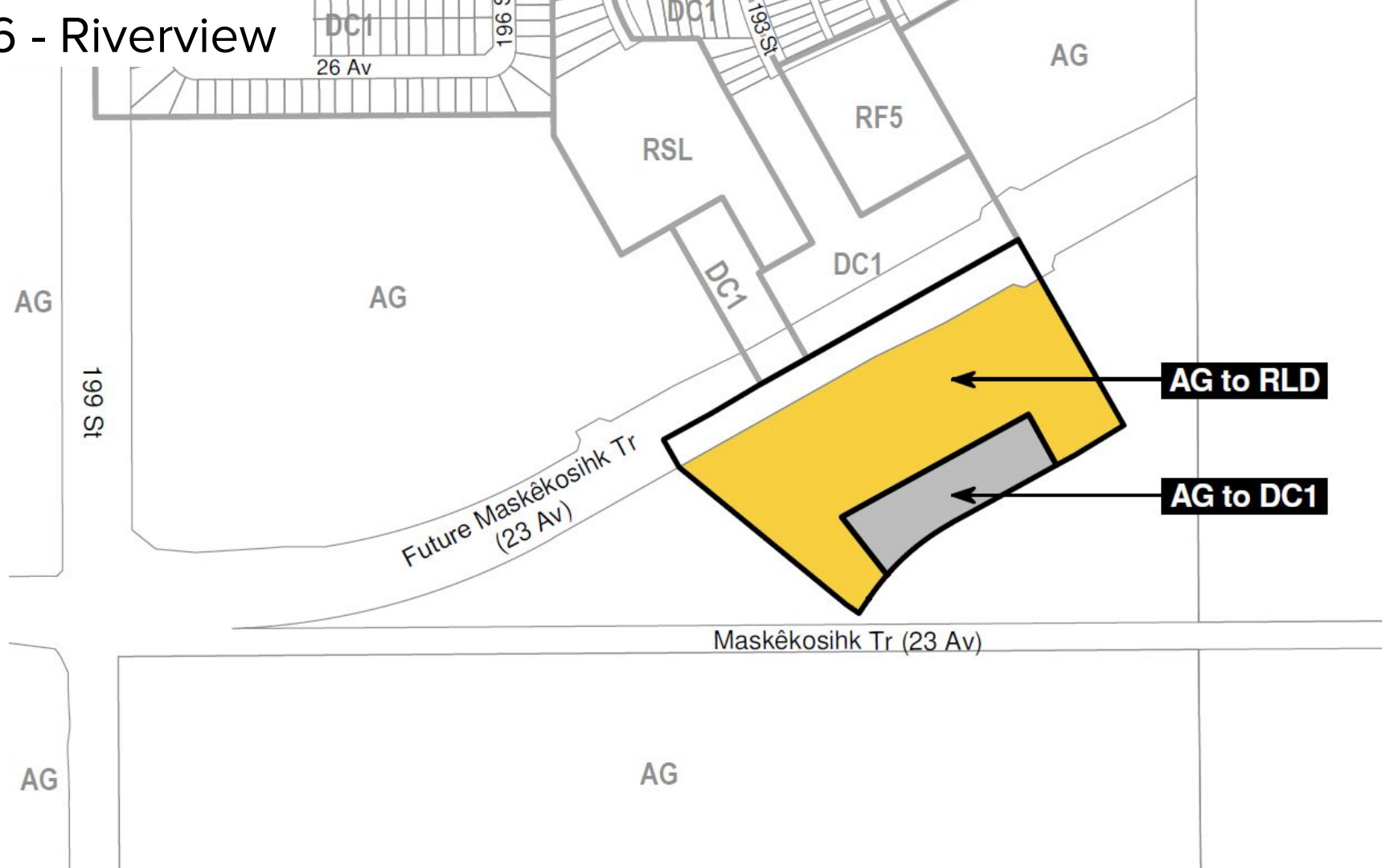
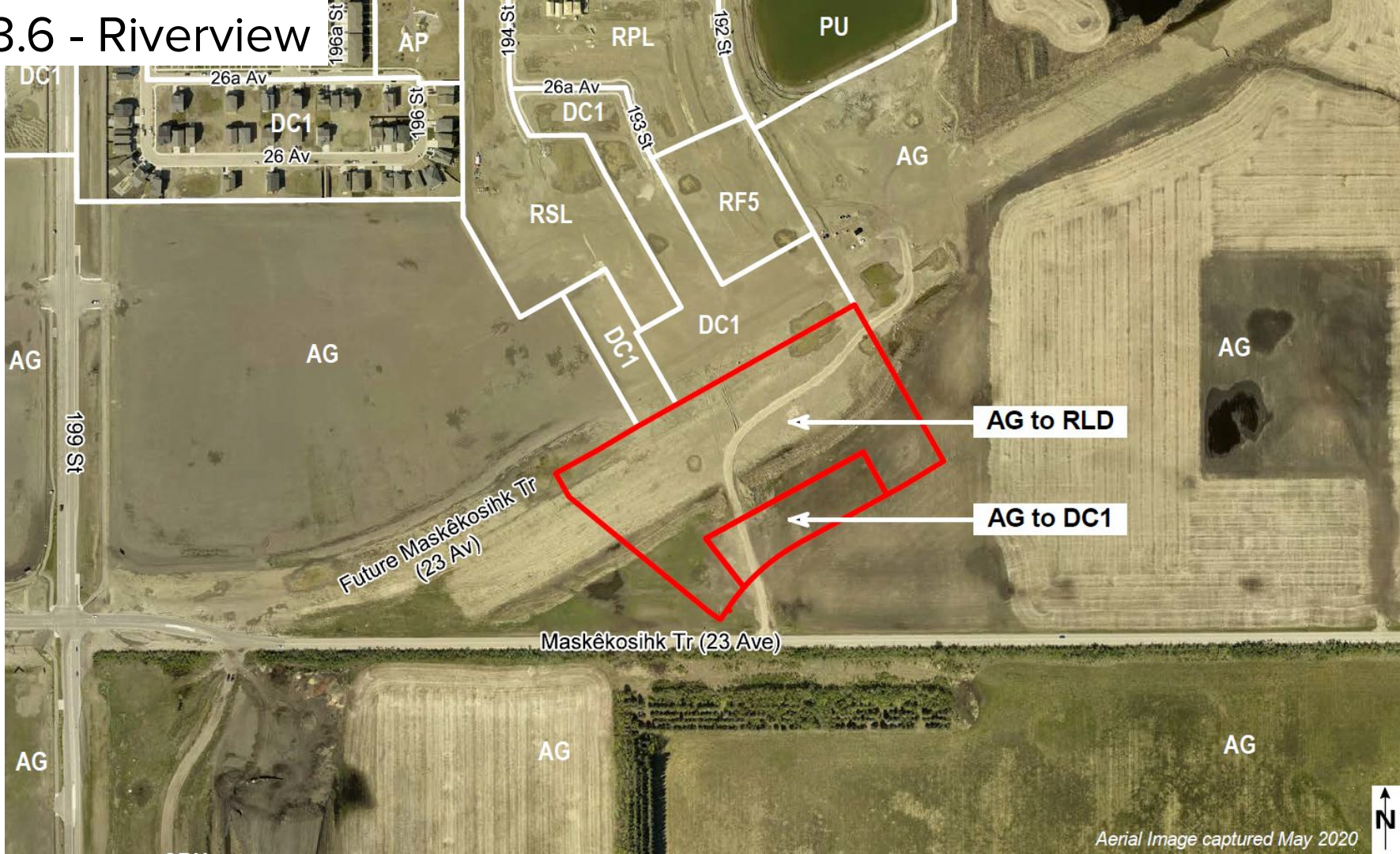


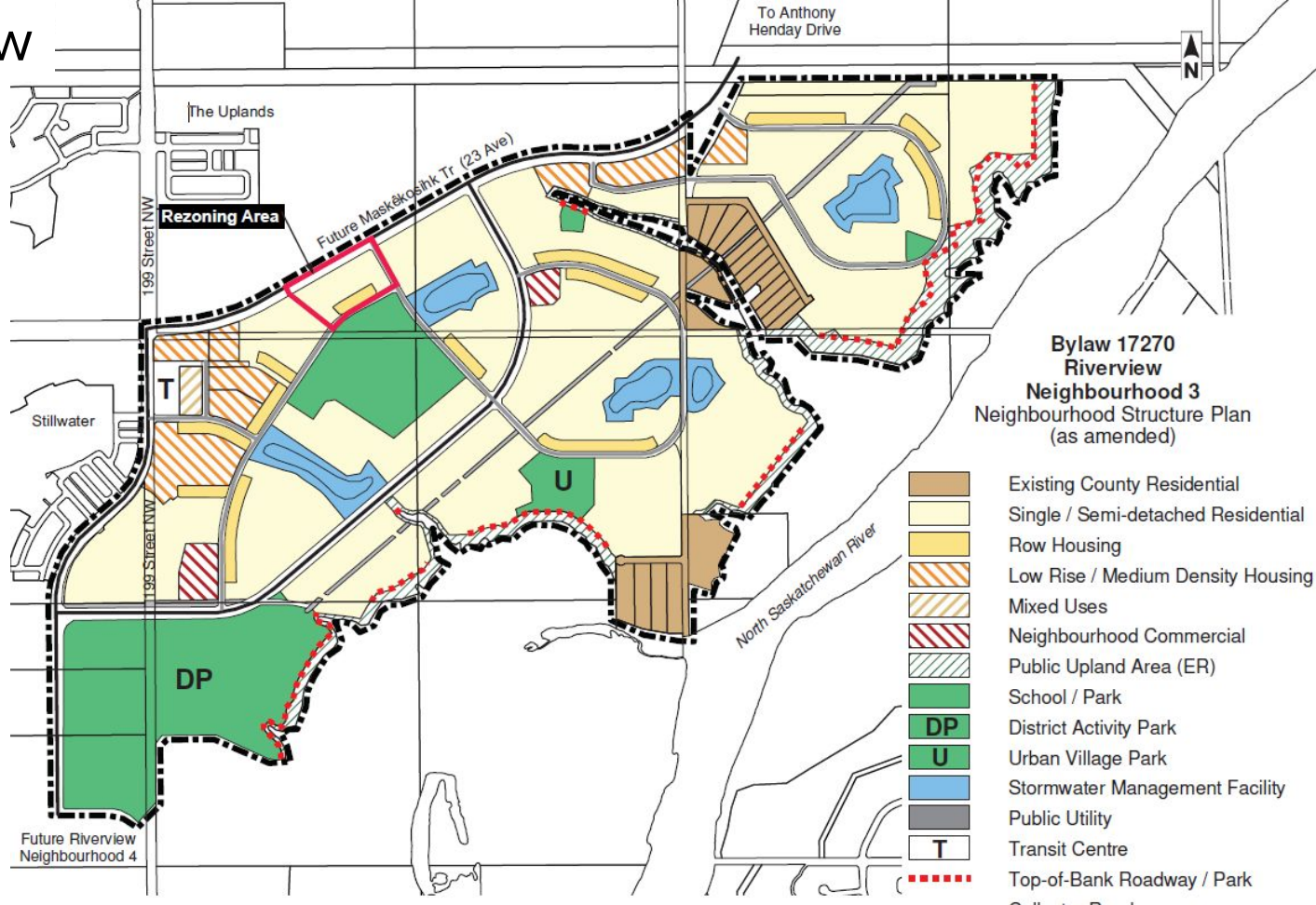
# 3.6 - Riverview



# 3.6 - Riverview



# 3.6 - Riverview



**Bylaw 17270  
Riverview  
Neighbourhood 3  
Neighbourhood Structure Plan  
(as amended)**

- Existing County Residential
- Single / Semi-detached Residential
- Row Housing
- Low Rise / Medium Density Housing
- Mixed Uses
- Neighbourhood Commercial
- Public Upland Area (ER)
- School / Park
- District Activity Park
- Urban Village Park
- Stormwater Management Facility
- Public Utility
- Transit Centre
- Top-of-Bank Roadway / Park
- Collector Roadway
- Arterial Roadway
- NSP Boundary

**Note:**  
Location of collector roads and configuration of stormwater management facilities are subject to minor revisions during subdivision and rezoning of the neighbourhood and may not be developed exactly as illustrated.