



PROPOSED
OPERATING
BUDGET
GEF Seniors Housing

THE CITY OF EDMONTON
2019 - 2022 Budget

Edmonton



Who we are

- Leaders in friendly, affordable, secure housing and services for seniors.
- We make a difference in the lives of more than 3,600 seniors, giving them a home and their families peace of mind.
- Largest provider of subsidized seniors' housing in Alberta.





What we do and how we do it

- Celebrating 60 years in 2019.
- Established as a management body by Ministerial Order with authority to operate under the Alberta Housing Act.
- GEF Seniors Housing is the registered trade name of Greater Edmonton Foundation.



What we do and how we do it

GEF portfolio consists of:

	No. of Units
Lodges	953
Lodge – Mental Health	38
Subsidized Apartments	2,411
Affordable Apartments	192
Duplexes & City-Owned Homes	37
Total	3,631



Our Residents

- Average age of a lodge resident is 85 years.
- Average age of an Ottewell Manor lodge (mental health) resident is 61years.
- Average age of an apartment resident is 77 years.



What's our focus in 2019-2022

GEF Seniors Housing's Strategic Priorities

- Supporting Quality of Life
- Strengthening GEF Culture
- Embracing Sustainability
- Meeting Seniors Housing Needs
- Creating Community Connections





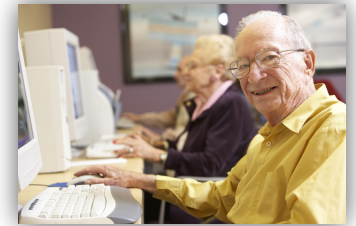
What's different in 2019-2022

- \$15.00 per hour minimum wage
- Higher CPP Premiums
- Employment Standards Changes – Increased Statutory Holiday Pay
- Carbon Tax
- Deferred Maintenance obligation a priority



The balance of optimism and realism

- Maintain and improve existing services for seniors
- Using grants and social enterprise to improve residents' Quality of Life
- Implement capital development plan to build new affordable seniors housing





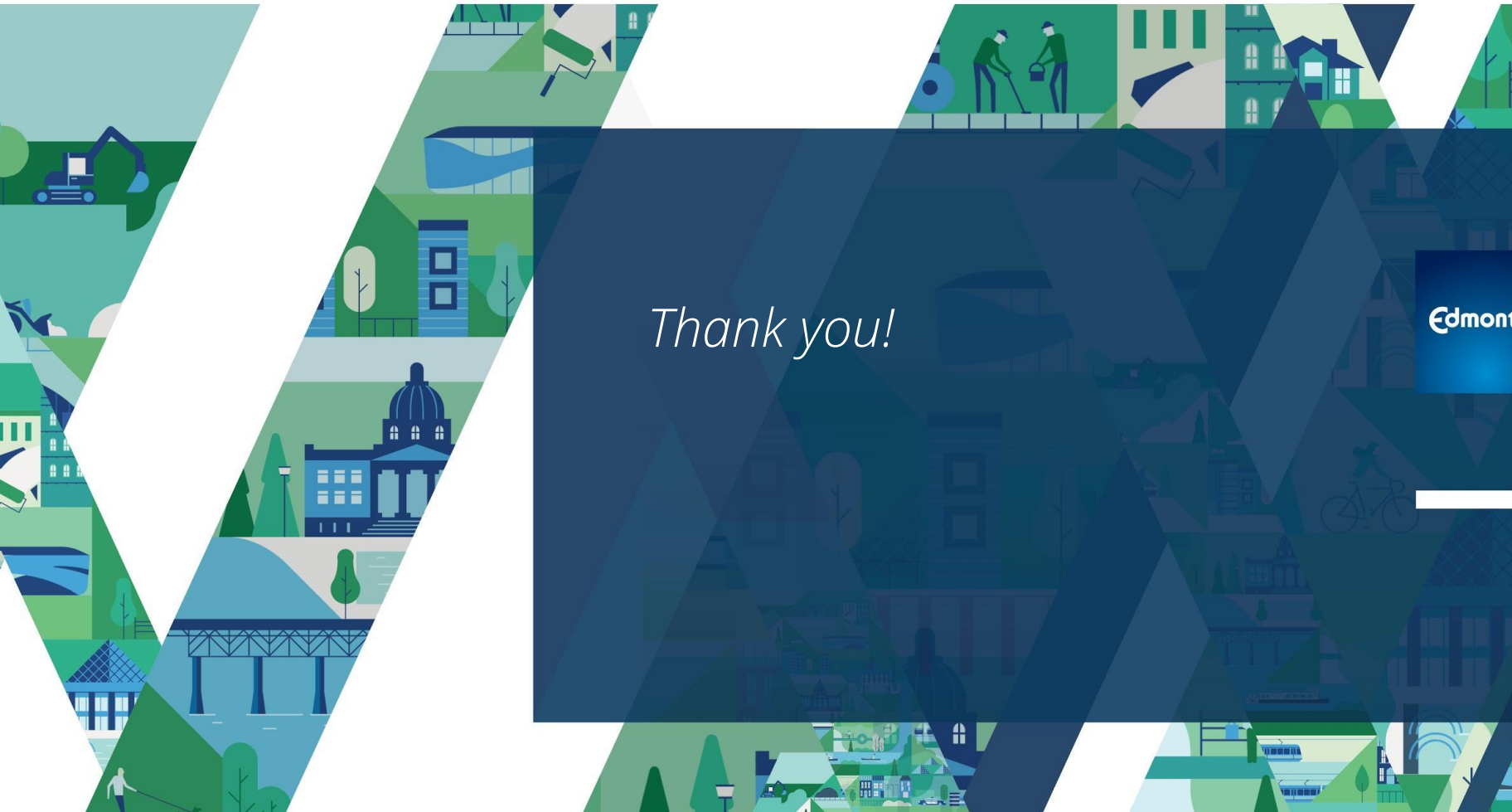
The way we demonstrate our performance

- High resident satisfaction
- Provide families peace of mind
- Best Small Employer in Canada for the last 10 years
- Health and Safety conscious (Partnerships in Injury Reduction Certificate of Recognition for the last 18 years)
- Environmentally responsible
- Fiscally responsible
- Powerful community partner
- City is now 15% of our revenue. A decrease from 20%.





Closing Remarks and Questions



Thank you!

