

Rosenthal Park Outdoor Recreation Facility

May 28, 2021

Project Introduction

- Joint project of the Edmonton Rosenthal Community League and Active Communities Alberta Society
- Not a replacement for the Lewis Farms Recreation Centre.
- Intended to provide a unique amenity that helps address long-standing community needs in a timely and cost-effective manner.

Stakeholder Support

- Rosenthal Community League
- Hockey Alberta
- Hockey Edmonton

Hockey Edmonton



May 25, 2021

Re: Outdoor Year-Round Recreation Proposal

Mr. Matt Bachewich
President
Active Communities Alberta

Dear Matt:

Thank you for the recent conversation and update on the Active Communities Alberta proposal to the City of Edmonton for a year-round outdoor recreation facility in the west end. We appreciate there is more work to do but, in principle, we are supporters of this project. This type of facility stands to be a great asset to the people of Edmonton and beyond for decades to come.

From a Hockey Edmonton point of view, we have difficulty fulfilling the ice requirements for a variety of arena users in the capital region. The rinks have not been replaced as originally planned and a number of arenas are reaching the end of their lifespans.

Our population growth has both contributed to the shortfall of arenas per capita and also resulted in citizens having to travel significant distances for practices and games. Our members express that challenge to us regularly. The challenge our citizens face falls short of what's recommended in the City of Edmonton's Reimagine Report. Indeed, this outdoor facility could also be duplicated in other parts of the city and help create 15-minute communities.

The creativity behind this project, both in its application and funding mechanisms, is also what is required in a world where we face such fiscal restraint.

While this project alone will not alleviate all of our challenges, it will help to enable our stakeholders and others pursue active, healthy lifestyles and reap the complimentary benefits of life skills and citizenship that sport helps develop.

For decades, Hockey Edmonton has been lauded for our Interlock Agreements with minor hockey associations – large and small – in the capital region. Together, we maximize programming opportunities that ensure efficient and cost-effective use of resources – capital, financial and human.

Visionary projects such as those Active Communities Alberta are working to bring to fruition provide us with great optimism that our exemplary programming can continue to meet the ever-increasing rigours of expectation that sport, society and our stakeholders demand.

We look forward to your continued success and a longstanding relationship.

Sincerely,

Steve Hogle
General Manager
Hockey Edmonton

Hockey Alberta

February 23, 2021

To Whom It May Concern:

It is with the full support of Hockey Alberta that we provide this letter of endorsement for Active Communities Alberta and their efforts to increase the supply of recreation facilities in our province.

As the provincial governing body for hockey in Alberta, we recognize the important role sport plays in encouraging lifelong physical activity, healthy living and strong communities. Active Communities Alberta, a non-profit society, has demonstrated a genuine commitment to these values. We have been engaged with Active Communities Alberta since 2017 and we are proud to continue supporting them.

Founded in 1907, Hockey Alberta is a member branch of Hockey Canada. Hockey Alberta represents 180 Member Minor Hockey Associations, ranging from Hockey Calgary and Hockey Edmonton to small associations in all corners of the province, 90 Junior Teams, 57 Senior Teams, 5 Accredited Schools, 6 Para Hockey Programs, and 45 Recreational Hockey Programs with a total of 100,000+ participants, in 197 different communities.

Hockey Alberta supports the innovative outdoor recreation facility project. This is an opportunity to launch a new approach that we expect would provide benefit by repeating it across the province. Scaling this approach will help to address the demand for ice time by Hockey Alberta Members.

The quality of the rinks proposed will provide a comparable ice quality to indoor rinks. The outdoor rinks would also provide a more cost-effective alternative that has the potential to lower the cost of participation and make it easier for those throughout the community to access ice facilities.

We are pleased to provide this endorsement for the Active Communities Alberta Outdoor Recreation Facility Project.

Sincerely,



Rob Litwinski
Chief Executive Officer

The Vision

Year-Round, Multi-purpose Outdoor Recreation Facility

- Two Recreation Pads that are covered
 - Refrigerated ice rinks during the winter
 - Dry concrete pads during the summer
- Change building with minimum of 4 dressing rooms
- Outdoor skating freeze-way / cross-country ski trails



Facility Activities

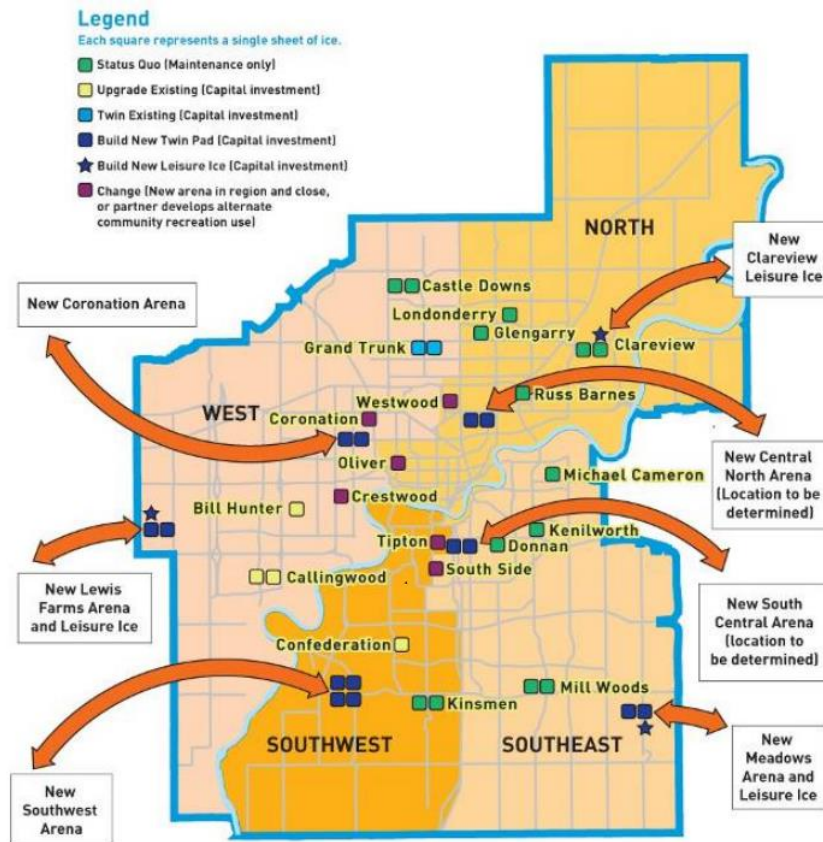
WINTER

- School Programming
- Public Skating
- Shinny
- Hockey
- Ringette
- Figure Skating
- Tournaments
- Skating Trail
- Cross-Country Skiing
- Snowshoeing
- Community Events
- Birthday parties

SUMMER

- School Programming
- Basketball
- Tennis
- Pickleball
- Badminton
- Ball Hockey
- Lacrosse
- Roller Skating
- Tournaments
- Car Shows
- Farmers Market
- Fitness Classes
- Summer Camps
- Community Events
- Birthday parties

City of Edmonton Arena Strategy

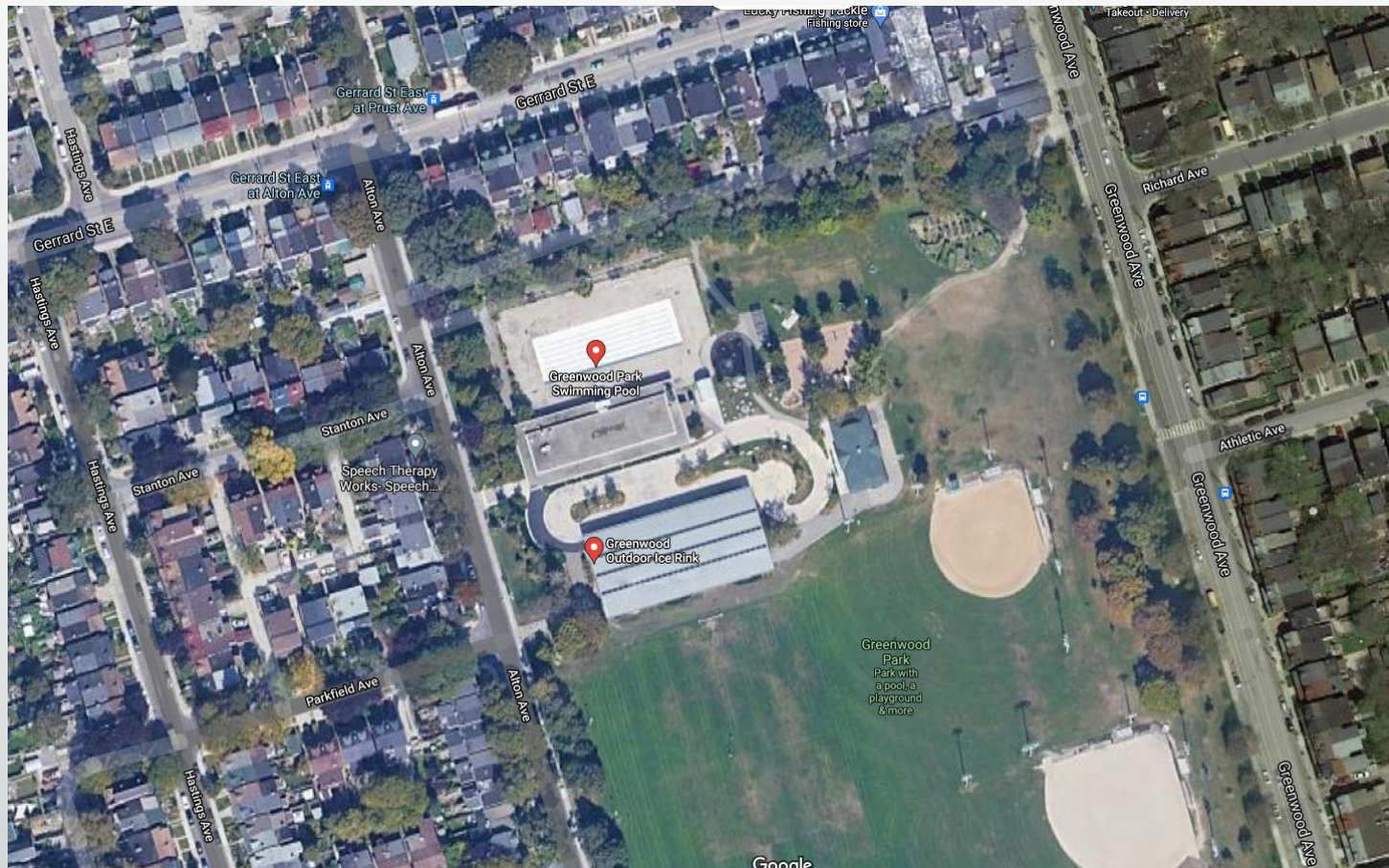


- Identified the Lewis Farms Arena in 2007
- Our facility could help address user group needs
- Feedback from potential user groups has been very positive



Greenwood Park (Toronto)

- Features outdoor rink that is refrigerated and covered with a roof
- We have used this facility as a template to create our vision



Greenwood Park (Toronto)

- Our facility would also feature standard Indoor Arena playing surface, boards and glass and a skating trail



Premium Ice Surface Quality

- Our facility would have quality ice that is comparable to indoor ice arenas and also resurfaced with a Zamboni.



Greenwood Park (Toronto)



Greenwood Park (Toronto)

- Our facility would act as a community hub, just like the Greenwood Park facility does.



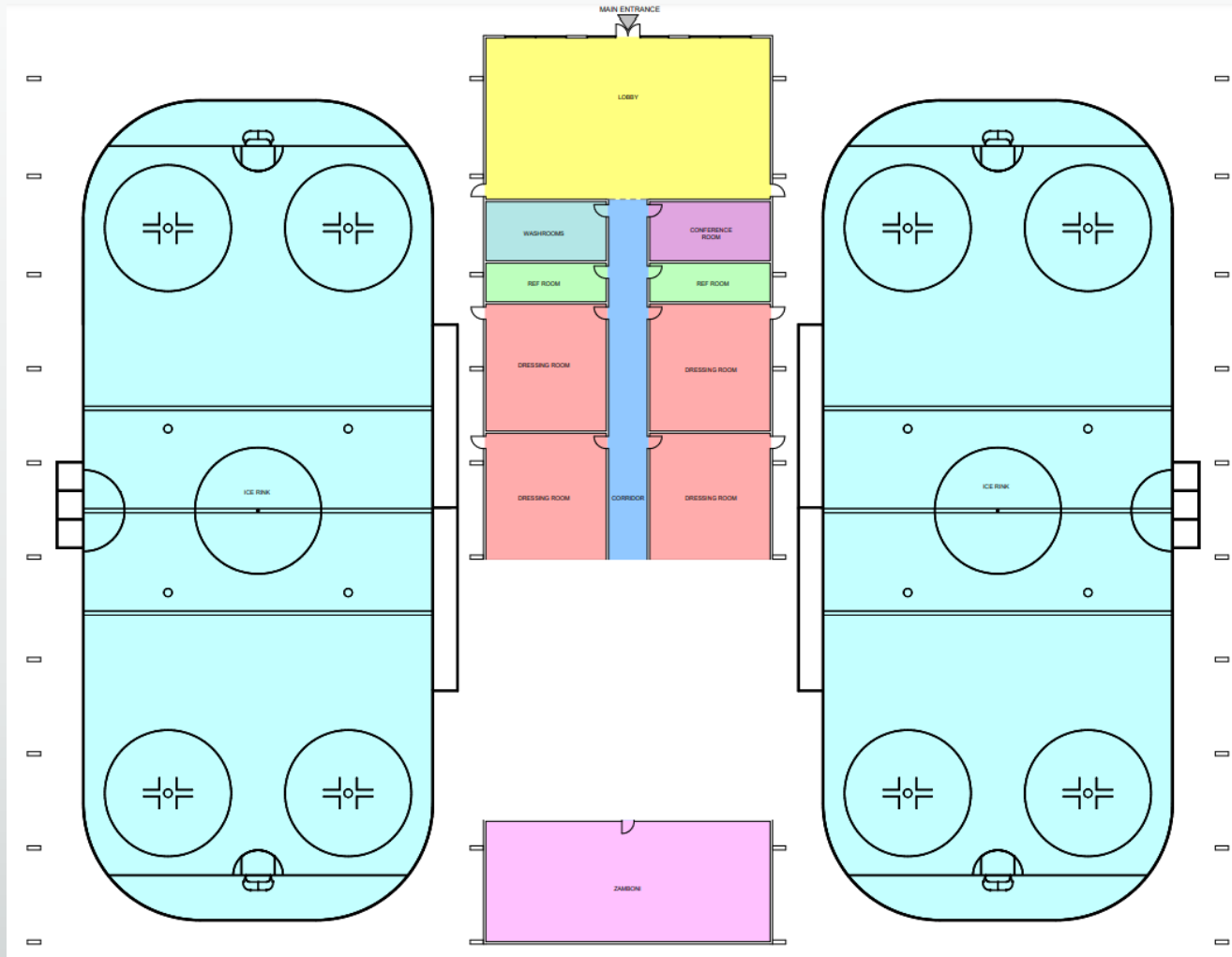
Greenwood Park (Toronto)

- Street view shows that a covered facility like this blends very well into the park and surroundings.



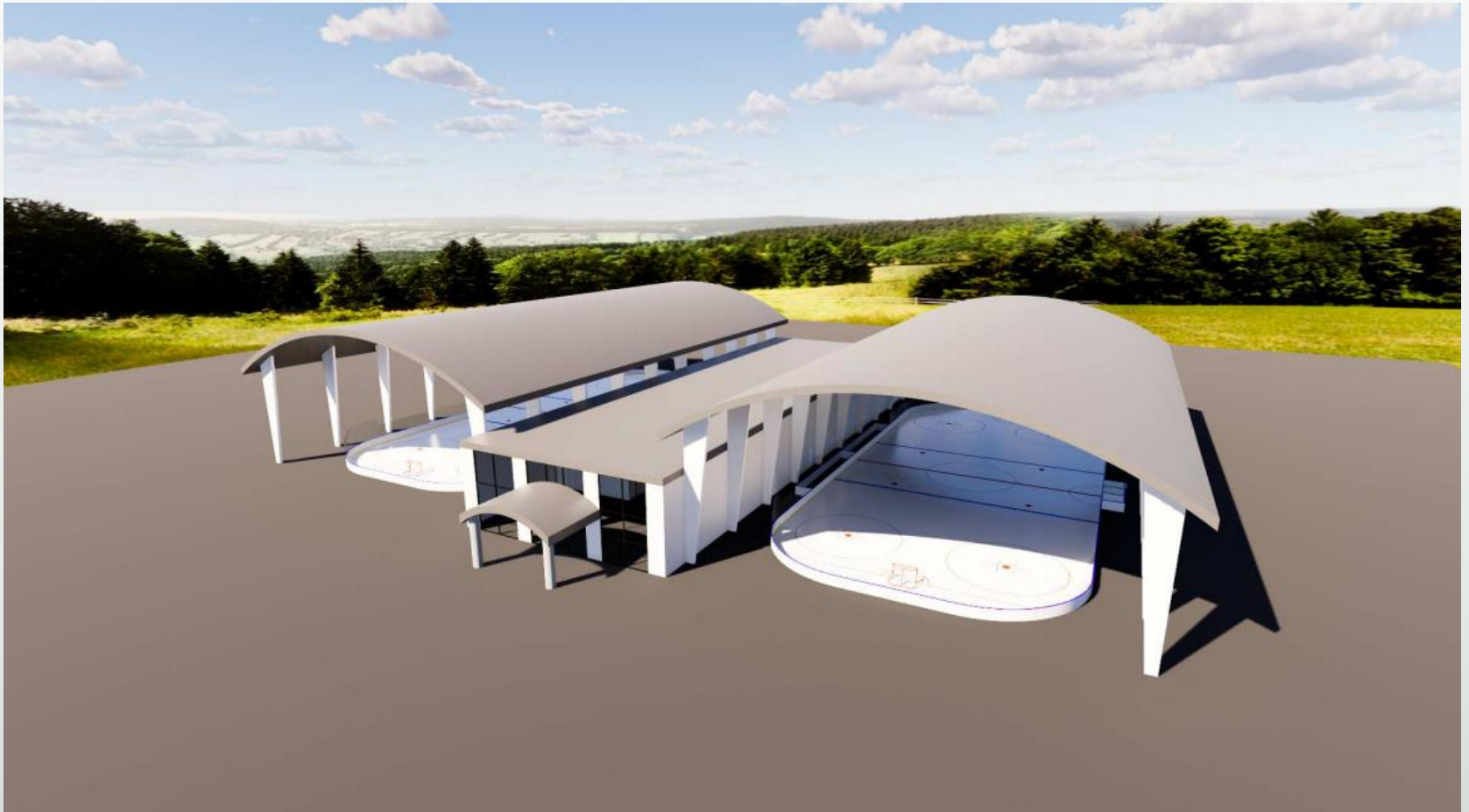
Our Facility Layout

- Preliminary layout designed by our architect.

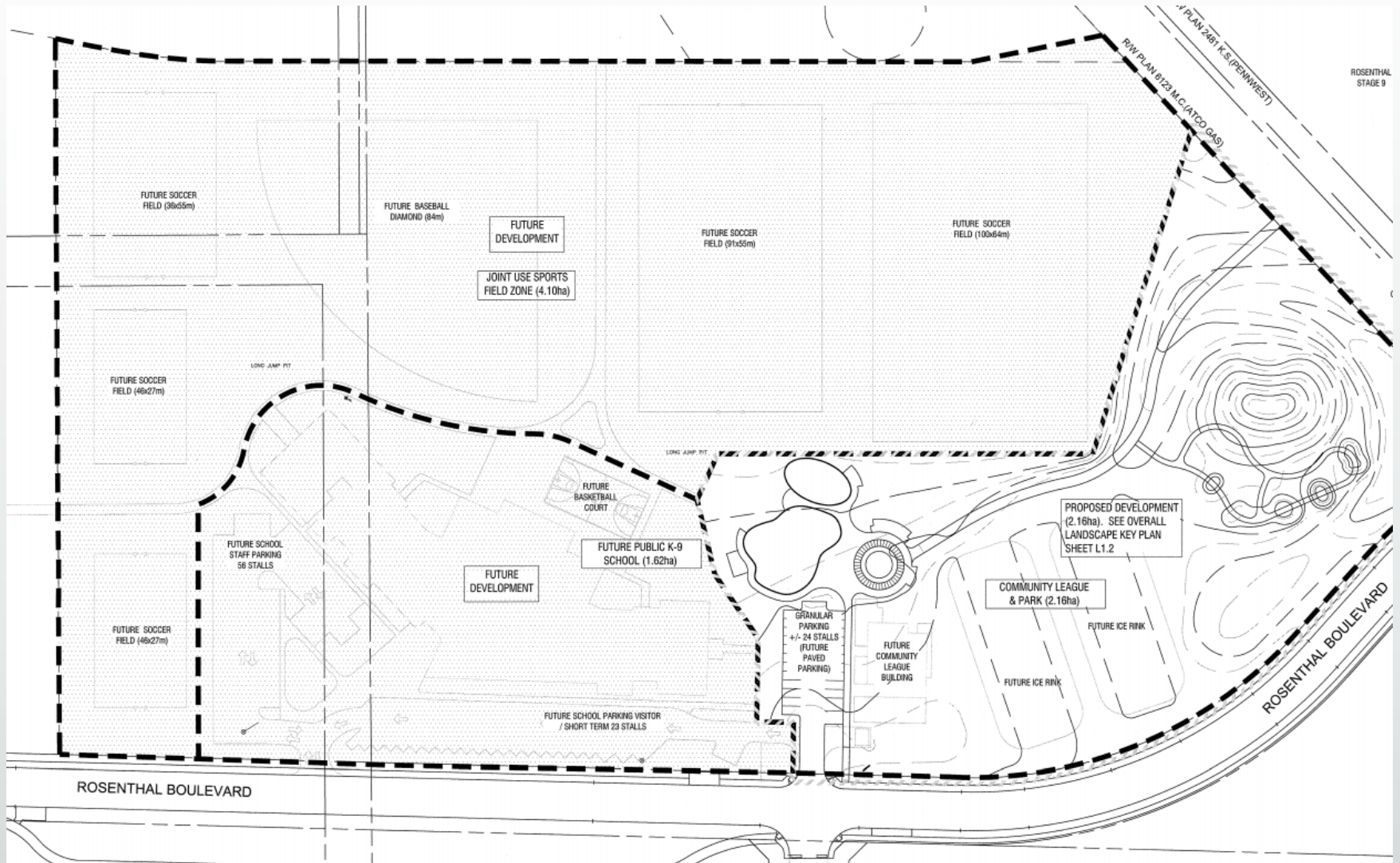


Our Facility Layout

- Preliminary layout designed by our architect.



Proposed Location – Rosenthal Park



Site Layout Option

